



# 2023 SALE CATALOGUE

2013 JD 4730 Sprayer



2009 JD 4830 Sprayer



2018 CaseIH 8240 AFS Combine



2015 NH CX8080 Elevation Combine



2012 JD S680 Combine



2013 NH T9.450 4WD Tractor



2015 CaseIH 580 Quad Trac Tractor



2009 CaseIH Steiger 485 4WD Tractor



2014 JD 9460R 4WD Tractor



2012 CaseIH 450 Quad Trac



2012 JD 9510R 4WD Tractor



[www.fraserauction.com](http://www.fraserauction.com)



# MORE THAN A COLLISION CENTRE

## *Helping you get back on the road*



# **MORGAN**

## **COLLISION**

# **30**

**Klondike Rd.**

**MPI & SGI Accredited  
Collision Repair**

**Frame, Suspension &  
Alignments.**

**Painting & Lettering  
Sandblasting**

**204-725-0755 • 1-877-725-0756**

**info@morgancollision.ca**

**Monday – Friday: 8:00am to 5:00pm**

**30 Klondike Road, Brandon, MB**

**www.morgancollision.ca**

# ONLINE BIDDING

At Fraser Auction Service Ltd. we want to make bidding on the items you want Easy and Enjoyable!

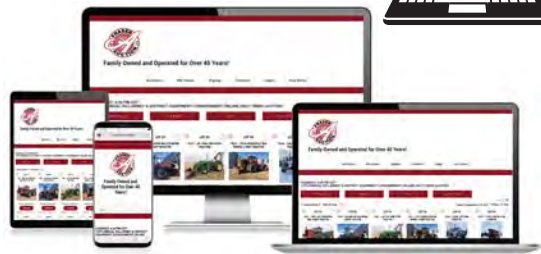
**RING #1 - ONLINE ONLY PRE-BID LIVE VIRTUAL AUCTION LOTS**

**RING #2 - ONLINE ONLY TIMED AUCTION LOTS**

[www.fraserauction.com](http://www.fraserauction.com)



**BIDDING HAS NEVER  
BEEN SO EASY...  
ON ANY DEVICE!**



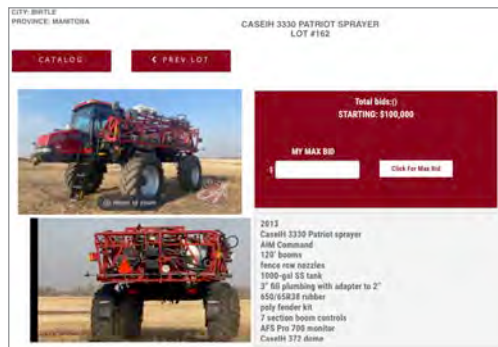
**More Features - Watchlists - Online Payments  
- Absentee Bid - Pre Bid - Max Bid - Raised Bid**

If you have bought online with us before, all you need to do is enter your email address and your password.

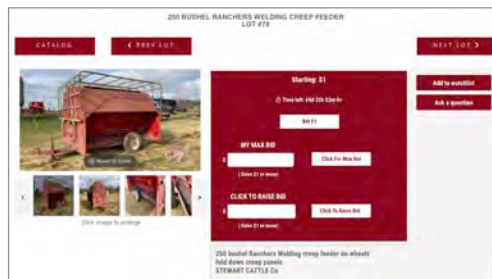
**Don't wait until sale time - create your account today at**

[www.fraserauction.com](http://www.fraserauction.com)

## PRE-BID LIVE VIRTUAL OR RING #1 AUCTION FORMATS



## TIMED OR RING #2 AUCTION FORMATS



## SALE DAY TURNS LIVE VIRTUAL

Our Pre-Bid Live Virtual Ring #1 will begin to broadcast live from our **Fraser Auction Service Studio** on sale days. You will then be bidding to the chant of our live auctioneer.

**Note:** Live sale bids open at the bid amount of the Pre-Bid.



***Our reputation is  
Your guarantee...***

## WHAT'S COMING UP!

APRIL 2ND	KILLARNEY CONSIGNMENT . . . . .	2-3
APRIL 4TH	LEE & SHIRLEY BAERG . . . . .	4-5
APRIL 5TH	CHRIS & ABBY LEEDS . . . . .	6-7
APRIL 6TH	SOULSBY FARMS . . . . .	8-9
APRIL 8TH	CHUCK & JOAN MANNS . . . . .	10-11
APRIL 12TH	TIBBATT'S MARSHLAND FARMS LTD. . . . .	12-13
APRIL 13TH	GEORGE GRAHAM SEED FARMS LTD. . . . .	14-15
APRIL 14TH	MAINELEE FARMS LTD. . . . .	16-17
APRIL 15TH	GARDINER FARMS LTD. . . . .	18-19
APRIL 17TH	THE CHEWINGS FAMILY . . . . .	20-21
APRIL 18TH	ALAN & BRENDA STEIN . . . . .	22-23
APRIL 19TH	BUTCHER FARMS LTD. . . . .	26-27
APRIL 21ST	BRAD & CAROLINE THOMPSON . . . . .	28-29
APRIL 24TH	WARREN & KATHY BROOKS . . . . .	30-31
APRIL 25TH	KEN FINGAS . . . . .	32-33
APRIL 26TH	KENDALL CROPS INC. . . . .	34-35
MAY 8TH	SWEETHEART POLLINATORS/ JANEIL ENTERPRISES . . . . .	36
JUNE 7TH	ALBERT HOLOPINA . . . . .	37
JUNE 10TH	FRASER AUCTION CONSIGNMENT . . . . .	38
JUNE 16TH	BARRY & JOY ROE . . . . .	39
JUNE 19TH	K.D. SPARROW FARMS . . . . .	41
JUNE 20TH	GLENELG FARMS LTD. . . . .	42-43
JUNE 21ST	BILL & SHIRLEY STADNYK . . . . .	44
JUNE 22ND	PORT-LAND FARMS LTD. . . . .	45
OCTOBER 4TH	CAM MANSER . . . . .	47





# ANNUAL KILLARNEY & DISTRICT ONLINE CONSIGNMENT SALE

KILLARNEY, MB. | SUNDAY, APRIL 2ND | 12:00 NOON  
BIDDING OPENS MARCH 27TH AND ALL LOTS CLOSE APRIL 2ND  
FOR MORE INFORMATION OR TO CONSIGN, CONTACT  
Del Smith 204-534-7783 (Call or Text) or Fraser Auction Office 204-727-2001

**TIMED ONLINE ONLY BIDDING** [www.fraserauction.com](http://www.fraserauction.com)

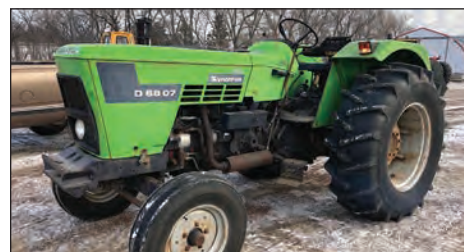


## DIRECTIONS:

Sale will be held at the farm of Del & Gert Smith, ½ Mile West of the Jct of #3 & #18 Hwys. (Just off #3 across from water tower)

**This sale now features 2 Complete Farm Dispersals**

**Retirement Farm Dispersal for Grant Harder & Retirement Farm Dispersal for Jim Margetts**







See [www.fraserauction.com](http://www.fraserauction.com) for complete listing

## FRASER AUCTION SERVICE LTD.

Brandon, MB Auctioneer: Scott Campbell / Jesse Campbell

P: 204-727-2001 F: 204-729-9912 TF: 1-800-483-5856 E: [office@fraserauction.com](mailto:office@fraserauction.com) [www.fraserauction.com](http://www.fraserauction.com)

Licensed and bonded. P.L. License #918093. Member of M.A.A., S.A.A., A.A.A., A.A.C.

**This is a HUGE sale.**  
 Complete details and pictures  
 available at  
[www.fraserauction.com](http://www.fraserauction.com)

**NOTE: Cheques of \$50,000 or more must be accompanied by bank letter of good standing. For more information on this please call Fraser Auction 204-727-2001**

Not responsible for errors in description. Subject to additions and or deletions. Property owners and Fraser Auction Service not responsible for any accidents, GST & PST where applicable.

TERMS: Visa, MasterCard, Debit, Cash, E-Transfer, Bank Wire Transfer, or cheque. Sale conducted by FRASER AUCTION SERVICE 1-800-483-5856 [www.fraserauction.com](http://www.fraserauction.com)





# RETIREMENT FARM AUCTION FOR LEE & SHIRLEY BAERG

BRANDON, MB. | TUESDAY, APRIL 4TH | 12:00 NOON

FOR MORE INFORMATION OR TO BOOK A VIEWING, CONTACT SELLER  
LEE BAERG 780-608-8120 or email: baergls50@gmail.com

ONLINE ONLY PRE-BID LIVE VIRTUAL [www.fraserauction.com](http://www.fraserauction.com)



**1**  
RING

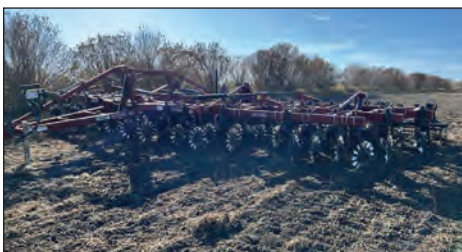


**DIRECTIONS:** GPS 49.765405,-100.104593

**From: Brandon, MB. (Jct #10 & #110)** 0.5kms south on #10 hwy Glencarnock Rd., 8.3kms west on Glencarnock Rd to Rd 115W (Roseland Curling Club), 3.2kms south on Rd 115W, 2.3kms west to sale site

**From: Jct of #10 & #349 hways** 8.3kms west on #349 hwy, 3.3kms north, 2.3kms west to sale site  
**From: Jct of #250 & #349 hways** 13.2kms east on #349 hwy, 3.3kms north, 2.3kms west to sale site

**2**  
RING





## TRACTORS:

- 1997 JD 9400 4wd tractor, 425hp, 4 remote hyd with return, Firestone 710/70R38 duals - approx 600 hrs on rubber, rear weight pkg, Power Quad trans, JD StarFire 3000 Dome and JD 2600 Monitor, JD Auto Trac Universal 200 steering wheel, 9491hrs showing, s/nRW9400H002475
- 2018 JD 5075E MFWA Tractor w/JD 520M loader, joystick controls, 74in bucket, 75hp, 2 remote hyd, 3pt, 540PTO, 12 speed trans with shuttle, 16.9-28 rear rubber, 9.5-24 front rubber, 130hrs showing, s/nJJ403493
- 1982 JD 4640 2wd tractor, 172hp, 520/85R38 duals rear rubber, 11.00-16SL 4 rib front rubber, front weight kit - (14) weight plates, factory 2 remote hyd with 2 more after market for total of 4 remote hyd, Big 1000 pto, Quad range trans, StarFire 3000 Dome and JD 2600 monitor, JD Auto Trac Universal 200 steering wheel, Joystick control for the Aux hyd at back, 10,500hrs showing, s/n4640H030286RW
- 1972 JD 4020 DSL O/S Tractor, JD loader with 6ft smooth bucket & 2 prong bale fork, 100hp, Synchro trans, dual pto, 2 remote hyd, 10.00-16 front rubber, 18.4-34 rear rubber, 4400 hrs showing (hr meter not working), s/nT213R265733R

## HARVEST:

- 1998 JD 9610 Maximizer combine, JD 914 pick-up header, Cray Big Top hopper ext, long auger, chaff spreader, fine cut chopper, Air Foil sieve, Firestone 30.5L-32 drive rubber, Firestone 16.9-26 rear rubber, 3624 sep hrs showing, 5142 eng hrs showing, s/nH09610X677715
- 1997 JD 9600 combine (50th Anniversary Edition), JD 914 pick-up header, long auger, chaff spreader, fine cut chopper, 30.5L-32 drive rubber, 14.9-24 rear rubber, 3719 sep hrs showing, 4963 eng hrs showing, s/nH09600X672327
- 2005 30ft MacDon 974 Flex Draper header, split pick-up reel, pea auger, self-transport, JD throat adapter, fore/aft, s/n165661
- 2004 30ft MacDon 974 Flex Draper header, split pick-up reel, pea auger, self-transport, JD throat adapter, fore/aft, s/n159878
- Harvest Ag Fabrication AH-632 header transport, tandem axle, steering front axle, s/n002407
- 2006 Hesston 9240 DSL Swather, 25ft 5200 Series header, pick-up reel, fore/aft, Rotor Sheer - both ends, 16.9-28 drive rubber, crop lifters, 2800 hrs showing, s/nHR92439
- 2006 Hesston 9240 DSL Swather, 25ft 5200 Series header, pick-up reel, fore/aft, rotor sheer - both ends, 16.9-28 drive rubber, crop lifters, 2719 hrs showing, s/nHR92455
- 10ft Farm King metal swath roller, s/nC1000SR14000117
- 10ft Farm King metal swath roller
- Brent 1080 Grain Cart, 1000pto, 900/60R32 rubber, 20in unload auger, Hyd auger chute control, roll tarp, s/nB22410126
- MK Martin 5000 gravity grain box, Approx 700 bushel, roll tarp, Horst Wagon, 425/65/22.5 rubber, s/nD0272
- Brent Unverferth 600 gravity wagon with extensions, 425/65R22.5 rubber, no tarp, s/n600853

## TRUCK & TRAILER:

- 2004 Kenworth T800 Day Cab t/a highway tractor, wet kit, 24.5 rubber, C15 CAT 475HP engine, 18 speed Eaton Fuller trans, 887,212 showing, 28,061hrs showing, VIN#1XKDD89XX4R975547
- 2001 33ft Courtney Berg t/a end dump grain trailer, tapered box, checker plate floor, grain, and silage end gates, roll tarp, 2-cylinder hoist, 24.5 rubber, aluminum fender pkg, air ride trailer, Custom Built for Mr. Baerg, VIN#2C9T2CSA213161116
- 1996 53ft Lode King t/a step deck trailer, (42ft deck and 11ft over gooseneck), strap winches, 255/70R22.5 rubber, Vin#2LSD5323T9026285

## SPRAYER:

- 2009 JD 4830 High Clearance sprayer, 100ft boom, 1000-gal S/S tank, 600/65R38 flotation rubber, 320/90R50 narrow In-Crop rubber, 5-way nozzle bodies with Fence Row nozzles, section boom controls, StarFire 3000 Dome with JD 2600 monitor, hyd intergraded auto steer, 3in fill plumbing, 3056hrs showing, s/nN04830X003323

## SEED & TILLAGE:

- JD 1780 Conservation MaxEmerge Plus VacuMeter planter, 23 rows @ 15in spacing, 12 rows @ 30in spacing, liquid fertilizer kit, 2-200gal liquid poly tanks (mounted), disc marker, draw bar style hitch, Corn, Bean, and Canola discs, s/nA01780E690243
- 45ft Flexi-Coil 5000 air drill, Flexi-Coil 3450 triple compartment poly air cart, 9in spacing, 3/4in Flexi-Coil carbide tip openers, single chute, dual chute - capable, dual hyd fans, 4in steel packers with single harrows, updated S/S metering tubes, 10in self-loading auger, 30.5L-32 Diamond tread rear tires, 22.5L-16.1 Diamond tread front tires, all new rubber across front of drill, Drill s/nAD-106028-01, Cart s/nG50-104782-01
- (60) NEW Atom Jet side band paired row opener
- 41ft, Salford I-2141 Vertical Tillage, waffled disks, 3 bar heavy harrows, rear rolling baskets, Salford weight pkg, adjustable hitch, s/n141615
- 18ft Bridgeview pull dozer 1850 Transformer Blade, requires 4 remote hyd to operate, mounted gauges for tilt and angle, Goodyear 750/60R26 rubber, serrated cutting edge, fully adjustable rear axles, wings fold in to 9ft, s/nP2126
- 70ft Summers heavy harrows, manual tine angle, light pkg, s/nK0548
- 55ft Rite Way Jumbo 8000 Mid Harrow, New harrow tines, hyd tine angle, s/n96-80146
- 70ft Flexi-Coil System 95 harrow packer bar, P20 coils, s/nS95-B000-P060631
- 3in Pattison chemical mix tank, 3in Honda GX160 water pump, 110 Liter/130-gal, mounted on 4-wheel tandem axle farm wagon
- 12ft JD 20 cultivator, s/n64040

## GRAIN HANDLING:

- Kwik Kleen 772 grain cleaner, electric driven, 5HP single phase, s/n0079
- Westfield MK130-71 Plus pto swing hopper auger, single auger in hopper, poly flex, 540 pto, s/n231203
- FarmKing 13x70 PTO hopper swing auger, DBL augers in hopper, 540 PTO, reversible gearbox, poly spout, s/nY137013000090
- Meridian HD8-39 auger, with Meridian 4-wheel mover, Kohler Commander Pro 23HP engine, Super Edge flighting, reversible gear box, light kit, poly flex spout, 2 electric clutch switches, s/n36-13881
- FarmKing CX 841 auger, electric 7.5hp motor, poly spout, s/nCX84114000003
- Sakundiak HD8-49 auger, PTO drive, hyd lift winch, poly flex spout, s/n21301
- REM VRX grain vac, Tri-fold auger, steel hose kit, 1000 pto, 262hrs showing

## FEED PROCESSING:

- Jiffy 900 bale processor, 1000 pto, LH discharge, adjustable apron, s/nJSB00021643
- Lucknow 300 4-auger mixer feed wagon, LH discharge, 540 pto, updated EZ 150 Digital onboard scale, Trelleborg 500/60-22.5 rubber, s/n00-0209

## TANKS, PUMPS, MOWER:

- Hold-On poly water tank (blue), approx 4000-gal, 3in valve and 1 1/2in valve
- 2000-gal Equinox poly tank, 3in valve and hose, (Tank A)
- 2000-gal Equinox poly tank, 3in valve and hose, (Tank B)
- Houle 6in liquid manure pit pump, 540 PTO drive
- Gornell pto drive irrigation pump, Model 4RBLHF6 with 6in inlet, 10in outlet, s/n9670
- NH 455 7ft bar mower, s/n9098

Many more items are included in this sale. Info and pictures available at [www.fraserauction.com](http://www.fraserauction.com)

**RING 1 LIVE VIRTUAL ONLINE  
RING 2 TIMED ONLINE AUCTION**

See [www.fraserauction.com](http://www.fraserauction.com) for complete listing

## FRASER AUCTION SERVICE LTD.

Brandon, MB Auctioneer: Scott Campbell / Jesse Campbell

P: 204-727-2001 F: 204-729-9912 TF: 1-800-483-5856 E: [office@fraserauction.com](mailto:office@fraserauction.com) [www.fraserauction.com](http://www.fraserauction.com)

Licensed and bonded. P.L. License #918093. Member of M.A.A., S.A.A., A.A.A., A.A.C.

NOTE: Cheques of \$50,000 or more must be accompanied by bank letter of good standing. For more information on this please call Fraser Auction 204-727-2001

Not responsible for errors in description. Subject to additions and or deletions. Property owners and Fraser Auction Service not responsible for any accidents. GST & PST where applicable.

TERMS: Visa, MasterCard, Debit, Cash, E-Transfer, Bank Wire Transfer, or cheque. Sale conducted by FRASER AUCTION SERVICE 1-800-483-5856 [www.fraserauction.com](http://www.fraserauction.com)





# FARM AUCTION FOR CHRIS & ABBY LEEDS

MOOSOMIN, SK. | WEDNESDAY, APRIL 5TH | 12:00 NOON

FOR MORE INFORMATION OR TO BOOK A VIEWING, CONTACT SELLER  
CHRIS LEEDS 306-435-7783 (call or text) or email: leedschris1975@gmail.com

ONLINE ONLY PRE-BID LIVE VIRTUAL [www.fraserauction.com](http://www.fraserauction.com)



**1**  
RING



**DIRECTIONS:** GPS 50.083942,-101.878811

**From: Moosomin, SK. (Jct #1 hwy & #8 hwy)** 5.0kms south on #8 hwy to #709 hwy, 14.6kms west on #709 hwy to Range Road 1331, 2.4kms south on Range Road 1331 to sale site east side

**From: Fairlight, SK. (Jct #8 & #48 hways)** North on #8 hwy to #709 hwy, 14.6kms west on #709 hwy to Range Road 1331, 2.4kms south on Range Road 1331 to sale site east side

**From: (Jct #9 hwy & #709 hwy)** East on #709 hwy to Range Road 1331, 2.4kms south on Range Road 1331 to sale site east side

**2**  
RING





## TRACTORS:

- 2009 CaseIH Puma 125 MFWA tractor, CaseIH L750 loader, 125hp, 8ft smooth edge bucket with grapple, New Firestone 520/85R38 rear rubber, Firestone 420/85R28 front rubber, poly front fender pkg, wheel weight pkg, 3 remote hyd, Factory 3PT, dual PTO, 18 speed Powershift with shuttle, 6800hrs showing, s/nZ9BL07032
- 2007 CaseIH Puma 165 FWA tractor, CaseIH LX770 loader, 165hp, 8ft bucket with manure tines and grapple, Factory 3 pt, dual PTO, Powershift with shuttle, 4 remote hyd, 520/85R38 rear rubber, 420/85R28 front rubber, poly front fender pkg, 7850hrs showing, s/nZ7BH01920
- CaseIH 1255XL FWA tractor, 125hp, 2 remote hyd, 1000 PTO, Factory 3PT, 6 speed Hi/Lo, standard trans, New Firestone 18.4-38 rear rubber, New Firestone 14.9-28 front rubber, front weight pkg with full set of weights, European pickup hitch, 40kms/hr gear box, 8611hrs showing, s/nD040928D004673
- 1978 Steiger 111 ST325 4wd tractor, 325hp, 4 remote hyd, 20.8-38 duals, CAT 3406 engine, Trimble Dome with Ez-Guide 250 Monitor, 20 speed trans, 0455hrs showing, s/n123-00533
- 1978 Steiger Cougar III pt270 tractor (Running - PARTS TRACTOR), 270hp, 4 remote hyd, 20 Speed standard trans, 3306 CAT eng - rebuilt (approx 200 hrs only on rebuild), transfer case issue, 23.1-34 single rubber, 8933hrs showing, s/n143-0014
- 1976 Case 2670 4wd tractor, 256hp, 18.4-34 duals, 1000 PTO, 2 remote hyd, Powershift trans, new injectors, 14ft front mount blade, 7371hrs showing, s/n8793467
- 1967 Case 730 O/S Comfort King tractor with Robin loader, 56hp, 2 remote hyd, 540 PTO, new lift cylinder, 18.4-30 rear rubber, 50hrs or less on engine rebuild, s/n8318860
- Deutz D8005 Green Tractor, 80hp, 2 remote hyd, 18.4-34 rear rubber with wheel weight pkg, 540 PTO, s/n7921-1487
- GUIDANCE SYSTEM:
- EZ-steer guidance system, Trimble dome, Trimble 250 monitor, EZ-steer wheel motor

## HARVEST:

- 1995 JD 9600 SP Combine, JD 914 p/u head, Cray Big top hopper ext, 30.5L-32 drive rubber, 480/80R26 rear rubber, standard auger, fine cut chopper, F/S Mfg. hyd chaff spreader, air foil sieves, 2857 sep hrs showing, 4110 eng hrs showing, s/nH09600X661305
- 1998 30ft JD 930 Flex header, pickup reel, poly dividers, fore/aft, 4-wheel farm wagon transport, s/nH00930F681522
- 1994 25' MacDon 960 Draper header (FOR PARTS), updated gear box, new knife and guard, rubber slat canvas - like new, pickup - needs attention, s/n87670
- 1995 Westward 9000 SP swather, 30ft MacDon header, pickup reel, single knife drive, 18.4-16.1 drive rubber, rear ball hitch, 2998hrs showing, s/n98965

## TRUCK & TRAILER:

- 1974 GMC Sierra 25 2WD reg cab truck, 350 V8 engine, 4 speed std trans, 3/4 ton, 88847 showing, VIN#TCY2451509649, NO REGISTRATION (TOD) - FARM USE ONLY
- 2005 Chev 2500 HD Extended cab truck, 4 door - rear doors open other way, 6litre gas, V8, New transmission less than 5000kms, LT265/75R16 rubber, farm ball hitch, checker plate toolbox, 125000 showing, VIN#1GCHK29U55E261858
- 2008 Ford F350 Super Duty 4x4 truck, Falcon Multi deck, hyd Bale arms with remote, toolboxes, 5.4 litre V8 Gas, auto trans, 17in rubber, hide away hitch system, rear hitch, front push bumper, 191,000 showing, VIN#1FTWF31578ED36828

- 1976 IH Loadstar 1600 Sundance Edition s/a Grain Truck, 14ft box, grain, and silage end gate, 9R22.5 rubber, 345 Gas, 5+2 trans, 042268 showing, MB truck, VIN#D0512FCA15571
- GMC 6500 s/a Grain truck with 15ft box, 11R22.5 drive rubber, 9.00-20 steering rubber, 366 V8 Gas engine, 5+2 trans, 86437 showing (original), Sask Truck, VIN#TCE66TV589845
- GMC Tag axle grain truck with 19.5ft box, Michael roll tarp, air lift - tag, 8.2-liter Detroit engine, 5+2 trans, air brake, twin cylinder hoist, runs and drives - but engine is tired, 148148 showing, VIN#1GDP7D1G3HV535881
- 2004 Freightliner Columbia T/A Day cab highway tractor, Mercedes 410hp engine, 10 speed Eaton Fuller, 11R22.5 rubber, new front windshield, fresh oil change - 0/40 synthetic, 144790 showing, 3696hrs showing, VIN#1FUJA6CV94PM39425, SAFETIED
- 2014 40ft Timpte super hopper alumni DBL hopper t/a grain trailer, power roll tarp with tarp saver, farm unit, DBL hopper, side unload on hopper chute, Newer 11R22.5 rubber, VIN#1TDH40020FB146288, SAFETIED
- 31ft Load Max 5th wheel farm ball t/a flat deck trailer, beaver tails, fold down ramps, front toolbox, electric brakes, VIN#012365
- 1996 t/a stock trailer, single partition gate, 16in HD trailer rubber, torsion axles, VIN#2K9GF1625TB017
- 24ft Trail King Plains Industries t/a gooseneck silage trailer, silage ext and gate, twin cylinder hyd hoist, farm ball, 3PT farm ball adapter, 10.00-15 rubber

## SEED & TILLAGE:

- 18ft Ag Shield land roller, 41in drum, Scraper, leveler kit, water fillable, s/n1210001
- 40ft Bourgault 8800 Air seeder and Bourgault 3225 DBL Compartment air cart, poly mounted packers, 3/4 carbide tip knock on openers, liquid fertilizer kit, 8in spacing, self loading auger, single hyd fan, tank hitch on cart, Cart s/n3997, Seeder s/n823185
- 13ft Shop Built bulldozer, hyd lift, hyd swivel, Firestone 18.4-26 Diamond Tread rubber
- Miskin Hyd scraper
- 16ft Sunflower tandem disc, smooth blades front and back, scraper kit, s/n77732
- 35ft JD 1610 tillage, 3 bar mounted harrows, bolt on sweeps, s/n001205N
- 60ft Bergen hyd harrow bar, all new tines, s/n1019
- Fertilizer spin spreader, Approx 5-ton, dual spinners, 11L-15 rubber, 540PTO drive on apron chain, ground driver on spinner

## SPRAYER:

- Apache A790 SP sprayer, 90ft boom, T-Jet 3-way nozzle bodies, 800gal poly tank, 50gal poly freshwater nurse tank, 5 section boom controls, Goodyear 380/85R46 rear rubber, 12.4-28 front rubber in crop, 2in fill plumbed, Trimble dome, Trimble 500 monitor, Trimble EZ-Steer motor, Trimble EZ-Boom 2010 boom controls, Raven spray controls, hour meter not working, s/nA790-999-1880

## GRAIN HANDLING:

- FarmKing 13x85 pto swing hopper auger, DBL auger in hopper, hyd mover wheels on hopper, 540 PTO, reversible gear box, poly flex spout, s/nNA
- Westfield MK100x51 pto swing hopper auger, single auger in hopper, 540 PTO, mechanical drive hopper, s/n61947
- FarmKing 8x41 auger with hyd self mover, hyd winch, Honda GX690 electric start motor, Approx 70hrs, s/n21058772

## HAYING EQUIPMENT:

- 2012 13ft CaseIH DC132 Discbine, rubber on rubber crimps, 1000 PTO, adjustable windrow width, approx 200 acres per year, s/nYCN092846
- 2005 CaseIH RBX562 RD baler, wide pick-up, 1000 PTO, twine tie, bale kicker, s/nHBJO40037
- 34ft S/A bale trailer, pipe deck, single steering axle-dualled, tractor pull

## INDUSTRIAL:

- 2005 Manitou MLT634-120 LSU Turbo Telehandler (bare fronted), 4WH drive, 4-wheel steer, 120 HP Turbo DSL, 6-meter boom (3.4 metric ton lift), full cab enclosure - AC not working, s/n215938
- 2000, JCB 520 Telehandler (bare fronted), 10.5/80-18 rubber, 4WD, 4-wheel steer, 4400lbs lift, 16ft lift height, 10ft max boom, 4467 hrs showing, s/nSLP520YF0790457

## LIVESTOCK:

- FarmKing 2400 trailer style post pounder, self contained hyd system, post cradle, Honda GX270 engine, rubber - good, s/n240015000028
- Kuhn Knight Pro Push 2044 Vertical beater t/a manure spreader, hydro push, 1000 PTO, poly floor, poly sides, 16.5L-16.1SL rubber, s/nE0178
- 24ft & 20ft Stampede steel metal feed bunk with adjustable feed rails

## FEED PROCESSING:

- 2006 JF-Stoll FCT 1355 PT forage harvester, 10ft pick-up head, 1000 PTO, Pioneer inoculate injector, 21.5L-16.1SL rubber, long spout ext, s/n126-014-1007
- JAY-LOR 5575 mixer feed wagon, 1000 PTO, DG 500 scale with Digital readout, RD discharge with magnet, Goodyear 435/50R19.5 rubber, single speed gear box, vertical auger - original teeth, used for two winters, s/n025483
- Bale King 3000 Bale Processor, self loading, LH discharge, 1000 PTO, s/nBK257
- Roto Grind A975 Tub Grinder, 1000 PTO, Standard LH discharge spout, Digital variable speed, s/n573113
- 50 Bushel Rays GP50 Custom Fabricating hopper bottom feed tank, 12-volt electric drive unload auger, auger for agitation mixing, arms added to be picked up by bale picker deck on truck

## BINS:

- (9) hopper bins with fan ranging from 2911 to 1950 bushel

Many more items are included in this sale. Info and pictures available at [www.fraserauction.com](http://www.fraserauction.com)

**RING 1 LIVE VIRTUAL ONLINE**  
**RING 2 TIMED ONLINE AUCTION**

See [www.fraserauction.com](http://www.fraserauction.com) for complete listing

**FRASER AUCTION SERVICE LTD.**

Brandon, MB Auctioneer: Scott Campbell / Jesse Campbell

P: 204-727-2001 F: 204-729-9912 TF: 1-800-483-5856 E: [office@fraserauction.com](mailto:office@fraserauction.com) [www.fraserauction.com](http://www.fraserauction.com)

Licensed and bonded. P.L. License #918093. Member of M.A.A., S.A.A., A.A.A., A.A.C.

NOTE: Cheques of \$50,000 or more must be accompanied by bank letter of good standing. For more information on this please call Fraser Auction 204-727-2001

Not responsible for errors in description. Subject to conditions and or deletions. Property owners and Fraser Auction Service not responsible for any accidents. GST & PST where applicable.

TERMS: Visa, MasterCard, Debit, Cash, E-Transfer, Bank Wire Transfer, or cheque. Sale conducted by FRASER AUCTION SERVICE 1-800-483-5856 [www.fraserauction.com](http://www.fraserauction.com)





# RETIREMENT FARM AUCTION FOR SOULSBY FARMS

PORTAGE LA PRAIRIE, MB. | THURSDAY, APRIL 6TH | 12:00 NOON

FOR MORE INFORMATION OR TO BOOK A VIEWING, CONTACT SELLER  
STEPHEN SOULSBY 204-595-8807 (call or text) or email: soulsbo@gmail.com

ONLINE ONLY PRE-BID LIVE VIRTUAL [www.fraserauction.com](http://www.fraserauction.com)



**1**  
RING



**DIRECTIONS:** GPS 50.0158,-98.3294

**From: Portage La Prairie, MB. (Jct #1A & #240)** 5.2kms north on #240 to Rd 69N, 3.3kms west on Rd 69N to Rd 38W, 0.4kms south on Rd 38W to Lane #68125(east side)

**From: Jct #16 & Rd 71N (Just south of Village of McDonald, MB.)** 10kms east on Rd 71N to Rd 38W, 3.7kms south on Rd 38W to Lane #68125 (east side)

**2**  
RING





## TRACTORS:

- 2015 CaseIH 580 AFS Quad Trac Tractor, 580hp, 36" Goodyear Trackman tracks, 1000 PTO, 4 remote hydraulic with returns, pwr shift trans with shuttle, full hyd intergrade auto steer, CaseIH 372 dome, AFS Pro 700 monitor, deluxe leather cab, mounted tow cable, 2672hrs showing, DEF delete done, s/nZEF303624, only 150hrs on complete engine rebuild from 2021 (oil pump failure)
- 2011 CAT Challenger MT755C Track Tractor, 301hp, 30in Tracks, 1000 PTO, 4 remote hyd with return, Trimble Co-Pilot Auto Steer, FMX 1000 monitor, Cebis monitor, mounted tow cable, 3544hrs showing, 1 metric ton front weight box, s/nAGCC0755ENW801031

## HARVEST:

- 2011 Claas Lexion 740 APS Hybrid combine, Lexion P516 pick up head, Swath Master hyd wind guard, extra-long auger, chaff spreader, tail board spinner, fine cut chopper, Cebis Monitor- Version 3.4.15, Precision cylinder, HP feeder house, Sunnybrook rear impeller, Lincoln auto lubrication system, Goodyear 900/60R32 drive rubber, 28L-R26 rear rubber, power folding hopper extension, rear hitch, Trimble Auto Steer, Trimble steering wheel, CFX 750 monitor, 2742 eng hrs, 1893 sep hrs, s/nC4800217
- 2011 JD 9770 STS Bullet Rotor combine, JD 615P p/u header, Crary Big Top hopper ext long auger, variable speed spinners, slow down kit for edible beans, perforated feeder house floor, contour feeder house, Goodyear 800/70R38 drive rubber, Goodyear 28L-26 rear rubber, rear hitch, Hyd Integrated auto steer, StarFire 3000 dome, JD 2600 monitor, 1786 rotor hrs showing, 2130 eng hrs showing, s/n1H09770SVB0742643
- 2011 40ft Claas 1200 MaxFlex flex header, split p/u reel, fore/aft, lateral tilt, AWS 2000 Advanced Wind Reel, full finger auger, double knife, single point hook-up, Horst 4-wheel transport with steering rear axle, s/n53500086

## TRUCKS:

- 1995 Ford Aero Max LTL 9000, tandem axle, 15ft gravel box, spring back tarp, spreader chains, dual chutes on tailgate, pintle hitch with air supply at rear, 11R24.5 rubber, 18 spd trans, N14 Cummins engine, 096651 showing, 12000lbs front, 40000lbs rear, SAFETIED, VIN#1FTYA95U1SVA47172
- 2007 Dodge Ram 2500 SLT Quad Cab Truck, 4x4, 4 door, automatic trans, Billet Built trans, 6.7-liter diesel Cummins engine, 6 1/2ft box, 2in receiver, 18in rubber, DPF deleted, 524,822km showing, Vin#3D7KS28A97G827664, SAFETIED
- 2003 GMC Sierra 3500 Crew Cab Dually truck, 4 door, 9ft flat deck with toolbox, hidden gooseneck ball, 2in receiver, mounted vice, 16in rubber, 4x4, 6 speed standard ZF transmission, 8.1-liter gas Vortec engine, 451,162km showing, Vin#1GTJV33G63F170535

## SEED & TILLAGE:

- 2018 Horsch Maestro SW 3115, 31 row planter, 15 or 30in spacing, liquid fertilizer kit, 520/85R42 duals on main frame, 14.9-24 diamond tread rubber on wings, full sets of seed disc (small grains, sunflower, canola, bean, corn, peas, 2 dry tanks (83 bush each), cameras in dry tanks (camera monitor included), front liquid tank (730 gal), independent row shut off, 4 section Auto Force, new disc openers put on before sale, 2in fill plumbing for liquid tank, ISOBUS controlled, unit wired to run off ISO (monitor not included with planter), s/n510311518005
- 2014 (Bought new in 2016), CaseIH Early Riser 1245 air planter, 31 row, 15 to 30in convertible, liquid fertilizer kit, dual liquid tanks (250gal), dual seed poly tanks (80-bus total cap), 1000 PTO driven, AFS pro 700 monitor (included), upgraded to Yetter closing discs, new opening discs put on before sale, 5 weight plates each end, 16.5L-16.1SL triples on each caster, 3 Yetter 6 spike disc closers on track rows, Auto Down Force every row individual, auto shut off, s/nYDS042510
- 2008 40ft Bourgault 5710 air seeder, Mid-Row Banders, Raven NH3 super cooler variable rate control, 10in spacing, 3/4in carbide tip knock on openers, rubber over steel 3in packer, tank hitch, hyd hitch winch, s/n39126AH-10
- 2008 Bourgault 6350 tow-between air cart,

single chute, triple compartment, self-load auger with poly low pro hopper & std factory hopper, 2 metering rolls, 591 monitor, 30.5L/32 rubber, s/n39006AS-05

- 22ft Sumo 9AR30, flat lift subsoiler, rear steel rolling drum, 9 shank, 30in spacing, 600/50-22.5 rubber, s/n112018
- 14ft Convey-ALL BTS300 seed tender, 20ft x 8in S.S unloading conveyor, roll tarp, hyd driven, sells with stand, was used on tandem truck
- (31) CaseIH 1240-1245 planter seed boxes
- 6.5in Factory rubber seating/closing wheels for 1240/1245 planter, enough for 31row 40ft planter

## ATTACHMENTS:

- 9ft high back manure fork, NH TV140 quick attach mounts
- 2 prong loader mount bale fork

## BUNKHOUSE TRAILER:

- 24ftX10ft Gemco t/a trailer, pintle hitch, being used as a bunk house
- 16ft x 8ft Deck with mounted benches

## TANKS, PUMP, COMPRESSOR:

- Ingersoll Rand 2 stage water cooled air compressor, belt driven, Model S50-HWB. Was bought as a project that never got done, As Is.
- 1250 Imp gal poly water tank, (White)
- 950-gal green poly tank on s/a dolly, 18.4-26 diamond tread rubber
- 3" Honda water pump, auxiliary fuel tank, wheel kit

Many more items are included in this sale. Info and pictures available at [www.fraserauction.com](http://www.fraserauction.com)

**RING 1 LIVE VIRTUAL ONLINE  
RING 2 TIMED ONLINE AUCTION**

**See [www.fraserauction.com](http://www.fraserauction.com) for complete listing**

## FRASER AUCTION SERVICE LTD.

Brandon, MB Auctioneer: Scott Campbell / Jesse Campbell

P: 204-727-2001 F: 204-729-9912 TF: 1-800-483-5856 E: [office@fraserauction.com](mailto:office@fraserauction.com) [www.fraserauction.com](http://www.fraserauction.com)

Licensed and bonded. P.L. License #918093. Member of M.A.A., S.A.A., A.A.A., A.A.C.

NOTE: Cheques of \$50,000 or more must be accompanied by bank letter of good standing. For more information on this please call Fraser Auction 204-727-2001

Not responsible for errors in description. Subject to additions and or deletions. Property owners and Fraser Auction Service not responsible for any accidents. GST & PST where applicable.

TERMS: Visa, MasterCard, Debit, Cash, E-Transfer, Bank Wire Transfer, or cheque. Sale conducted by FRASER AUCTION SERVICE 1-800-483-5856 [www.fraserauction.com](http://www.fraserauction.com)





# RETIREMENT FARM AUCTION FOR CHUCK & JOAN MANNS

FIRDALE, MB. | SATURDAY, APRIL 8TH | 12:00 NOON

FOR MORE INFORMATION OR TO BOOK A VIEWING, CONTACT SELLER  
CHUCK or JOAN MANNS 204-239-7705 call or text or email: [cjmanns@live.com](mailto:cjmanns@live.com)

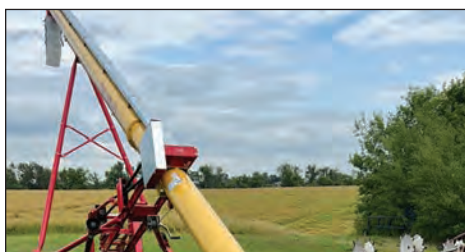
**ONLINE ONLY PRE-BID LIVE VIRTUAL** [www.fraserauction.com](http://www.fraserauction.com)



**DIRECTIONS:** GPS 49.985509,-99.111164

**From: Sidney, MB. (Jct #1 & #352)** 9kms north on #352 to  
Railway tracks, 1.6kms west from Railway tracks to Stop sign  
0.3kms north to Lane #66122

**From: Jct #16 & #352 (Old Arden Ridge Store)**  
29.2kms south on #352 to Lane #66122





**TRACTORS:**

- 1997 JD 9100 4WD Tractor, 260hp, 20.8-R38 duals, Quad Range trans, 4 remote hyd with return, Outback S3 Guidance, Outback E-Drive, 4098hrs showing, s/nRW9100S001266, always shedded

**HARVEST:**

- 2006 CaseIH 2388 Combine, CaseIH 2015 pick-up header, Rake-Up hyd wind guard, Cray big top hopper ext, long auger, 800/65R32 drive rubber, 14.9/24 rear rubber, internal chopper, stone trap, rear weight pkg, AFS Harvest monitors, 2129 rotor hrs showing, 2704 engine hrs showing, s/nHAJ295992, always shedded
- 1997 25' CaseIH 1020 Flex header, with pick up reel fore/aft, light kit, 2-wheel slow speed header transport, s/nJJC0226205, always shedded
- 1998 MF 220 SP Swather, 25ft Massey draper header, UII Pick up reel, single knife drive, 21.5L-16.1 Firestone drive rubber, Isuzu Dsl Engine, 4 weight plates on rear hitch, 2260hrs showing, s/nG220170, always shedded
- 21ft IH #75 pt swather, batt reel, rubber slat canvass, 540 PTO, s/n001402
- 8ft Douglas poly swath roller

**TRUCK:**

- 2007 Freightliner Business Class MII s/a truck, 16ft Loadline B+H, power roll tarp, A/C, hoist controls at rear, 11R22.5 rubber, 230hp Mercedes Dsl engine, 6spd Allison automatic trans, 328184 showing, 21000lbs rear, 9525lbs front, VIN#1FVACXCS47HY55673, always shedded, SAFETIED
- 1990 GMC Top Kick T/A grain truck, 20ft B+H, roll tarp, 427 gas engine, 5+2 trans, 080139 showing, 11R22.5 rubber, 11000lbs front, 34000lbs rear, VIN#1GDS7H4M6LJ607658, always shedded, SAFETIED

**SEED & TILLAGE:**

- 100ft Flexi-Coil System 67 sprayer, 850-gal poly tank, Flexi-Coil cone mix tank, hyd pump, aux. freshwater tank, Goodyear 18.4-26 diamond tread rubber, wind screens, single nozzle bodies, chem wash tank, pressure washer spray nozzle, s/nS67-112109-03
- 40ft Bourgault 8810 air seeder, 2003 Bourgault 5350 triple compartment air cart, 3 metering boxes, Mid Row Banders, 10in spacing, 3in carbide tip seed boots, self-loading auger, dual chute, camera in tanks, 2 main tanks have new augers, Goodyear 28L-26 rear cart, Goodyear 21.5L-16SL front cart, 3in rubber over steel, 491HP monitor, cart s/n37525AS-04, tillage s/n362273CU-03

- 27ft CaseIH 5600 Chisel Plow, Raven Accu-Flow Super Cooler NH3 kit, Raven SCS 440 spray control monitor, 3/4in carbide tip knock-on NH3 knives, adjustable hitch, 3-bar mounted harrows, s/nJAG0001863

- 24ft Bourgault FH 424-28 tillage, knock on sweeps, 3 bar harrows, tank hitch, (right front caster wheel is tight needs some work)

- 20ft CaseIH 3950 Tandem Disc, smooth blades front and back, full scraper kit, 11L-15SL rubber, s/nJAG0753403

- 27ft Coil Packers, P20 coils

- 3pt Row Crop cultivator, 6 row 30in spacing, star discs on wheel tracks, S-Tine shanks

**GRAIN HANDLING:**

- Westfield MK100-71 pto swing hopper auger, single auger in hopper, 540 PTO, Never Spill poly spout, manual lift winch, mechanical drive hopper auger, s/n250418
- Westfield TFX2 10x41, 540 PTO drive, poly flex spout, approx 3 seasons old s/nWF02A051914483

**MISC:**

- 500gal poly tank on t/a wagon

**See [www.fraserauction.com](http://www.fraserauction.com) for complete listing**

**FRASER AUCTION SERVICE LTD.**

**Brandon, MB Auctioneer: Scott Campbell / Jesse Campbell**

**P: 204-727-2001 F: 204-729-9912 TF: 1-800-483-5856 E: [office@fraserauction.com](mailto:office@fraserauction.com) [www.fraserauction.com](http://www.fraserauction.com)**

**Licensed and bonded. P.L. License #918093. Member of M.A.A., S.A.A., A.A.A., A.A.C.**

NOTE: Cheques of \$50,000 or more must be accompanied by bank letter of good standing. For more information on this please call Fraser Auction 204-727-2001

Not responsible for errors in description. Subject to additions and or deletions. Property owners and Fraser Auction Service not responsible for any accidents. GST & PST where applicable.

TERMS: Visa, MasterCard, Debit, Cash, E-Transfer, Bank Wire Transfer, or cheque. Sale conducted by FRASER AUCTION SERVICE 1-800-483-5856 [www.fraserauction.com](http://www.fraserauction.com)





# RETIREMENT FARM AUCTION FOR TIBBATT'S MARSHLAND FARMS LTD.

GRANT & GWEN TIBBATT'S

BINSCARTH, MB. | WEDNESDAY, APRIL 12TH | 12:00 NOON

FOR MORE INFORMATION OR TO BOOK A VIEWING, CONTACT SELLERS

GRANT & GWEN 204-532-2007 House or 204-773-0008 call or text or email: ggtibbatts@gmail.com

**ONLINE ONLY PRE-BID LIVE VIRTUAL** [www.fraserauction.com](http://www.fraserauction.com)



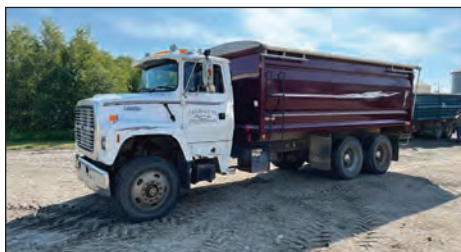
**1**  
RING



**DIRECTIONS:** GPS 50.6237, -101.1143

**From:** Binscarth, MB. (Jct #16 & #478) 11.6kms east on #478, at the 7km mark you will come to a STOP sign. DON'T turn north continue 4.6kms east on gravel grid road to sale site on the south side.

**2**  
RING





**TRACTORS:**

- 2012 JD 9510R 4WD tractor, 510hp, 520/85R46 triples, rear wheel weight kits, 5 remote hyd with return, Big 1000 PTO, Powershift trans, StarFire 6000 Dome with JD 2630 monitor, 2862hrs showing, s/n1RW9510RTCP003931, Approx 100hrs on this tractor since was put through Pattison JD shop in Russell, MB
- 1992 JD 8760 4WD tractor, 300hp, Goodyear 20.8R38 duals, 3 remote hyd w/return, Quad Range trans, Outback auto steer with Outback E-Drive and Outback STS monitor, Hyd intergraded, 6998hrs showing, s/nRW8760S005291
- 1989 CaseIH 7110 Magnum MFWD, 144hp, Allied 894 SL loader, joystick control, 8ft quick attach bucket, quick attach 2 prong bale, quick attach 10ft front mount blade, dual PTO, 3 remote hyd, 20.8-38 rear singles, 16.9-28 front singles, 18spd power shift, 9787hrs showing, has hyd plumbing and valve for Outback E-Drive (not included), s/nJJA0015199

**HARVEST:**

- 2013 JD S670 SP combine, JD 615P pick-up head, Michael's Crop Catcher, 520/85R42 dual drives rubber, 28L-26 rear rubber, long auger, power folding hopper ext, full hyd integrated auto steer, JD 2630 monitor, (wiring there but needs 6000 or 3000 Dome - not included), dual variable speed spinner chaff spreader, lateral tilt on feeder house, Green Lighted every year by Pattison in Russell, MB, 1 owner unit, took off its first crop in 2014, 1199 rotor hrs showing, 1780 eng hrs showing, s/n1H0S670SAD0757667
- 2010 35ft JD 635D Hydro Float draper header, pick-up reel with duck feet fingers, fore/aft, pea auger, self-transport, single point hook-up, DBL accumulators, DBL knife drive, crop lifters, s/n1H00635DVA0735902
- 2006 Hesston 9240 SP swather, 30ft 5200 Series header, pick-up reel, Roto-Shears on both ends, new canvases 3 years ago, rear weight pkg, 18.4R-26 drive rubber, 12.5L-15SL rear rubber, 2 speed hydro, 1386hrs showing, s/nHR92284

**TRUCK:**

- 2006 Sterling LT9500 T/A Grain Truck, 20ft Cancade Box, roll tarp, hoist controls at rear, remote power tailgate, and remote hoist, Mercedes engine 450hp, Smart Shift automatic trans, 22.5 rubber, 12000lbs front, 40000lbs rear, 940837showing, SAFETIED, VIN#2FWJA3CV56AV41147

• 1997 Ford L9000 T/A grain truck, 18ft Cancade Box, roll tarp-2 seasons old, remote power tailgate, and remote hoist, rear hoist controls, 22.5 rubber, 13spd Road Ranger trans, Cummins M11 engine, 15000lbs front, 40000lbs rears, 499612showing, SAFETIED, VIN#1FDYW90V5VVA06545

• 1987 Ford L9000 T/A grain truck, 20ft Box, roll tarp, sells with 1750 Imp gal poly water tank, 2in Chem Handler I chemical system, 6.5hp Power Fist 2in water pump, Digital water meter, tarp hoops & end gates included, 22.5 rubber, 3406 Cat eng, 13spd trans, 12000lbs front, 40000lbs rears, 107570showing, SAFETIED, VIN#1FDYU90X1HVA09986

**SPRAYER:**

• 2004 JD 4710 SP Sprayer, 90ft Boom, 800gal S/S tank, 5 section auto boom controls, StarFire 3000 Dome, 2630 monitor (updated monitor), hyd integrated Auto Steer, Auto Rate, Raven Auto Boom GI controller, 520/85R38 flotation rubber, 320/90R46 In-crop rubber, 2 front tires - Tridecon S/S dividers, 2 back tires - open tube style dividers (Moulson's Welding design but mounts in Tridecon mounting brackets), 3-way nozzle bodies, S/S chemical cone, 3in plumbed, touchdown wheels, fence row nozzles, 3197hrs showing, s/nN04710X006729, gone over by certified mechanic JD - every 2nd year, and done January 2023 prior to sale.

**SEED & TILLAGE:**

- 2013 50ft Bourgault 9400 tillage, Raven Accu-Flow variable rate NH3 kit, Raven control box, 3 section manual sectional controls, 3/4in carbide tip NH3 knives, 4 bar harrows, s/n41445CP-02
- 2011 50ft Bourgault 8810 tillage, 2009 6450 Bourgault 3 meter/4 compartment air cart, 10in spacing, seeder - has front weight pkg, 2in carbide tip seed boots, 3in HD rubber over steel packers, light pkg, single chute, 10in self-loading auger, 900/60R32 rear rubber, 540/65R24 front rubber, hitch on cart, 591 monitor, Tillage s/n40501CU-04, Cart s/n39696AS-15
- 2005 70ft Bourgault 6000 Mid harrows, all new tines in 2018, s/n38645MH-10

**GRAIN HANDLING:**

- Renn-Vertec VT 3630 propane continuous flow grain dryer, single phase, updated solenoids in it, not inspected, on cement under roof, has axle kit but needs bearings and rubber, wet grain 5in auger with electric motor, Penta Drive VC manual speed control, s/nNA
- REM 2700 grain vac, 1000 PTO, Tri-fold auger, metal hose pkg, clean up nozzle, s/n0725
- Brandt 10-70 PTO swing hopper auger, DBL augers in hopper, 540 PTO, hyd lift winch on hopper, Never Spill spout, s/n106869
- Westfield MK 100-61 PTO swing hopper auger, single auger, 540 PTO, never spill poly spout, s/n90652
- Westfield 100-51 PTO swing hopper auger, 540 PTO, single auger in hopper, s/n45102
- Wheatheart R10-41 auger, hyd self-mover, hyd lift winch, 35hp Vanguard, reversible gear box, poly flex spout, electric clutch switch, s/nWH16563
- Wheatheart BH 846 auger, hyd self-mover, hyd lift winch, 30hp Kohler Commander Pro, Wheatheart bin sweep with back shields, poly flex spout, s/nWH2639

**DITCHER & BLADES:**

- Kirchner hyd V-Ditcher
- 16ft Leon 5-way hyd blade, fold up end caps, steering axle, 425/65R22.5 rubber, s/n11751110
- 3pt JD 6ft blade

**BINS & AERATION FANS:**

- (15) hopper bins ranging from 10,000 bushels and down
- OPI Store Max DM Deluxe monitor, Power unit for bins cable reading
- (11) aeration fans

Many more items are included in this sale. Info and pictures available at [www.fraserauction.com](http://www.fraserauction.com)

**RING 1 LIVE VIRTUAL ONLINE  
 RING 2 TIMED ONLINE AUCTION**

**See [www.fraserauction.com](http://www.fraserauction.com) for complete listing**

**FRASER AUCTION SERVICE LTD.**

**Brandon, MB Auctioneer: Scott Campbell / Jesse Campbell**

**P: 204-727-2001 F: 204-729-9912 TF: 1-800-483-5856 E: [office@fraserauction.com](mailto:office@fraserauction.com) [www.fraserauction.com](http://www.fraserauction.com)**

**Licensed and bonded. P.L. License #918093. Member of M.A.A., S.A.A., A.A.A., A.A.C.**

**NOTE: Cheques of \$50,000 or more must be accompanied by bank letter of good standing. For more information on this please call Fraser Auction 204-727-2001**

**Not responsible for errors in description. Subject to additions and or deletions. Property owners and Fraser Auction Service not responsible for any accidents. GST & PST where applicable.**

**TERMS: Visa, MasterCard, Debit, Cash, E-Transfer, Bank Wire Transfer, or cheque. Sale conducted by FRASER AUCTION SERVICE 1-800-483-5856 [www.fraserauction.com](http://www.fraserauction.com)**





# RETIREMENT FARM AUCTION FOR GEORGE GRAHAM SEED FARMS LTD.

GEORGE GRAHAM

FOXWARREN, MB. | THURSDAY, APRIL 13TH | 12:00 NOON

FOR MORE INFORMATION OR TO BOOK A VIEWING, CONTACT SELLER  
GEORGE GRAHAM 204-773-6389 call or text or email: graseed@icloud.com

ONLINE ONLY PRE-BID LIVE VIRTUAL [www.fraserauction.com](http://www.fraserauction.com)



**1**  
RING



**DIRECTIONS:** GPS 50.5334,-101.2808

**From: (Jct #16 & #41 hwy)** 7.3kms south on #41 hwy to Rd 104N, 0.8kms west on Rd 104N to Lane #165080 (south side)

**From: St. Lazare, MB. (Jct #41 & #42 hwy)** 10kms north on #41 hwy to Rd 104N, 0.8kms west on Rd 104N to Lane #165080 (south side)

**2**  
RING





## TRACTORS:

- 2013 NH T9.450 Tractor, 405hp, (when DEF delete was done 20% power-boost was added to make 495hp), Firestone 710/70R42 duals, 4 Remote Hyd with return, Powershift Trans with Shuttle, Full Hyd Integrated Autosteer, NH Dome, Intelliview III Monitor, 3154hrs showing, 2000lbs weights pkg on rear wheels, 1000lbs weights pkg on front wheels, DEF deleted s/nZCF218148
- 2005 JD 7820 MFW tractor, 172hp, JD 746 loader, quick attach 8' bucket and grapple, joystick controls, factory 3PT, 3 remote hyd, Dual PTO, 520/85R38 Singles Rear with inner wheel axle weights, 16.9-28 Singles Front, Trimble Auto, EZ-Steer Wheel Motor, 500 Monitor, EZ-Guide, Auto Quad Plus 20 trans with Shuttle, 9870hrs showing, s/nRW7820R034869
- 1980 IH 1086 tractor, 146hp, 18.4-38 duals, dual PTO, 2 Remote Hyd with return, 8' Leon Blade, 4 Speed Hi/Lo trans, 9015hrs showing, s/nU48065

## HARVEST:

- 2018 CaseIH 8240 AFS Combine, CaseIH 3016-15 Series II header, Harvest Screen seed saver, long auger with electric deflection spout, power folding hopper ext, 620/70R42 dual drive rubber, 750/65R 26 rear rubber, Internal chopper, Deluxe cab pkg - leather heated seats, Hyd integrated auto-steer, CaseIH 372 dome, AFS Pro 700 monitor, 721 rotor hrs showing, 982 engine hrs showing, variable speed spinners, stone trap, Red Seal Inspection done at RME Russell, MB. November 2022, s/nYHG235411
- IH McCormick 80 PT Combine, Excellent restoration project, kept under roof, ran in field 12 years ago doing plot work
- 2018 35ft MacDon FD 75-S Flex Draper header, Contour Buddy wheels, Split pickup reel, fore/aft, Self Transport, Pea auger, CaseIH throat adapter, Single point hookup, s/n329056-18
- CaseIH concaves - wide wire slotted, pea-soybeans
- Skyman Model 225 concaves - hard thrash aggressive
- 2013 MF by Hesston WR 9740 swather, 36ft 5200 series header, Pickup reel, Single knife drive, Schumacher knife, bearings in knife guides redone in 2021, 50 hrs on new hyd pump, RH canvas 1 season old and sells with New one for LH, Belly mount metal swath roller, 620/75R26 drive rubber, 16.5L-16.1SL rear rubber, 760hrs showing, s/nAGCM97400DHS1133

## TRUCK:

- 2008 IH Prostar Premium T/A Grain Truck, 20' CIM Ultra II grain box, roll tarp, Remote control chute and hoist, 22.5 rubber, 435hp Cummins ISX eng (Red), Automatic push button trans - no clutch, 12,000lbs fronts, 40,000lbs rears, 1,110,500showing, SAFETIED, VIN#2HSCUAPRX8C654026
- 1980 Mack T/A grain truck, 20' Canade Mono Body box, roll tarp, Remote chute controls, 22.5 rubber, 290HP Cummins 855 engine, 13 speed Eaton Fuller trans, Hendrick's suspension, 259,020 original miles, SAFETIED, VIN#R747S2163

- 1978, Ford F700 S/A grain truck, 16' box, 370 gas engine - engine new 2 years ago, 5+2 trans, 11R22.5 rear rubber (almost new), 10.00-20 front rubber, 95105showing, VIN#F70FVCR6517
- 2011 Chevrolet Silverado 2500, 4x4, 4-door, Vortex 6-Litre gas engine, 6-spd auto trans, approx 4000kms on New BF Goodrich tires, 173,736 showing, SAFETIED, VIN#1GC1KXCG7BF225628

## SPRAYER:

- 90ft Flexi-Coil 67XL high clearance pt sprayer, 4 section boom controls, 3-way nozzle bodies, Wind screens, 1250 Imp gal Poly Tank, Hyd pump, Goodyear 14.9R46 rubber, Chemical mix cone, s/nS67XL-103547-00

## SEED & TILLAGE:

- 2011 54' Bourgault 3310 PHD air drill, 2008 Bourgault 6450 4 compartment air cart, 4 metering rolls, DBL chute, 12" spacing with 3" splitter boots, Mid Row Banders, (set up for NH3 or dry fertilizer down banders), Raven Accu-Flow Super Cooler variable NH3 kit, All hoses new in fall 2022, Self loading auger, On row packers, DBL fans, Cart - 900/60R32 rear rubber, Cart - 540/65R24 front rubber, 591 monitor, s/n40574PH-08 (drill), s/n39283 AS-04 (cart)
- 2013 70ft Bourgault 7200 heavy harrows, 21.5L-16.1SL tires on main frame, Hyd down pressure, s/n41368HH-26
- 70' Flexi-Coil System 82 harrows, 5-bar harrows, s/n1025290
- 50ft Vibra-Master tillage, 3-Bar Degelman Harrows, 8" spacing
- 36ft Wil-Rich tillage, John Blue NH3 kit, 3/4" knock-on NH3 knives, 3-bar harrows
- 8ft IH 620 dbl disc press drill, (used in field in 2021), Seed and Fertilizer Boxes, small seed / grass seed attachment, Shedded, s/n001727
- Degelman Signature Series R7200 Rotary Stone Picker, Hyd drive, Rock Apron, 16.5L-16.1SL Rubber, s/n22064
- 2018 16ft Kello-Bilt 225 offset disc, Notched front and back, only used approx 50 acres since new, s/n225-3726BWF-FSM0182918, 1 owner unit

## ATTACHMENTS:

- 48in Frontier pallet forks, mounts for JD 740/640 quick attach style loaders, s/n1XFAP13DCC0001998
- 7ft Bush Hog SQ7 3pt Rotary Mower, 540 PTO, s/n12-01117
- 9ft Buhler Farm King 3pt Hyd blade, Hyd angle, s/nNA

## GRAIN HANDLING:

- GT Tox-O-Wik 360 Propane Batch Grain Dryer, PTO fan, Not certified, Hubs + wheels (Bearings freshly packed in axles), Hitch, s/n3431
- 2011 Walinga 5614 Deluxe Grain Vac, 1000 PTO, Tri-fold Auger, Steel and rubber hose kit, Super Chrome vac, s/nMT5614DLX1105D12379, 1 owner unit

- 2018 Batco 1590SA conveyor, remote power electric swing hopper wheels, Hyd lift winch, 540 PTO, Poly flex spout, s/n15040040

- 2019 Batco FX1545 Conveyor, hyd self-mover, 33HP Vanguard EFI, Light kit on hopper, Hyd lift winch, Purchased new in 2019, s/n15-02456

- Batco 1335 conveyor, 5HP 1ph electric motor, Mounted hopper, s/n11807

- Buhler/Farm King 13x70 PTO swing hopper auger, DBL augers in hopper, Hyd wheels on hopper, Mechanical drive hopper, Reversible gear box, never spill spout, 540 PTO, New bearings and chains in drives in 2022, New universals in drive shaft in 2022, s/n21912659

- Westfield MK100-61 PTO Swing Hopper Auger, Single auger in hopper, Never Spill spout, 540 PTO, Mechanical hopper drive, Reversible gear box, new gear box in swing hopper drive, new flighting in the hopper auger tube, s/n144015

- Westfield MK100x51 PTO swing hopper auger, Single auger in hopper, 540 PTO, s/n49371

- Wheatheart BH10x36 Auger, Hyd mower, 36HP Kohler Command Pro Eng, Hyd lift winch, bought new in 2012, s/n206574W

- Westfield 8x46 auger, 7HP 1ph electric motor, s/nNA

- Westfield 8x31 auger, 13HP Honda ES engine, s/n89152

- Westfield 7x41 auger, 5HP 1ph electric motor, s/nNA

- Westfield 7x36 auger, 9HP Honda engine (Engine had a complete tune-up at Goldstar Small Engine), s/nNA

- Westfield 7x36 auger, 3HP 1ph electric motor, s/nNA

- 250 Bushel Kendon galvanized gravity box, NH Conestoga 4-wheel wagon, Extension and Tarp

- 180 Bushel Inland Gravity Box on 4-Wheel Wagon

## BINS:

- (27) Hopper Bottom Bins ranging from 5000 to 1250-bushel. Some with fans. Complete list on website.

## MISC:

- 1000-gal fuel tank with 115-volt pump
- Frost Fighter Indirect Fired DSL shop space heater, Dual outlet - 12", 350,000 BTU unit, always shedded, 3 lengths of hose (high temp canvas style), 1 owner unit
- Lincoln SA200 DC Arc welder, Gas engine, 2-wheel wagon, Approx 40' of leads

Many more items are included in this sale. Info and pictures available at [www.fraserauction.com](http://www.fraserauction.com)

**RING 1 LIVE VIRTUAL ONLINE  
RING 2 TIMED ONLINE AUCTION**

See [www.fraserauction.com](http://www.fraserauction.com) for complete listing

## FRASER AUCTION SERVICE LTD.

Brandon, MB Auctioneer: Scott Campbell / Jesse Campbell

P: 204-727-2001 F: 204-729-9912 TF: 1-800-483-5856 E: [office@fraserauction.com](mailto:office@fraserauction.com) [www.fraserauction.com](http://www.fraserauction.com)

Licensed and bonded. P.L. License #918093. Member of M.A.A., S.A.A., A.A.A., A.A.C.

NOTE: Cheques of \$50,000 or more must be accompanied by bank letter of good standing. For more information on this please call Fraser Auction 204-727-2001

Not responsible for errors in description. Subject to additions and or deletions. Property owners and Fraser Auction Service not responsible for any accidents. GST & PST where applicable.

TERMS: Visa, MasterCard, Debit, Cash, E-Transfer, Bank Wire Transfer, or cheque. Sale conducted by FRASER AUCTION SERVICE 1-800-483-5856 [www.fraserauction.com](http://www.fraserauction.com)





# RETIREMENT FARM AUCTION FOR MAINELEE FARMS LTD.

RICK & GLORIA LEE

PIERSON, MB. | FRIDAY, APRIL 14TH | 12:00 NOON

FOR MORE INFORMATION OR TO BOOK A VIEWING, CONTACT SELLER  
RICK & GLORIA LEE 204-522-5145 call or text or email: [rwlee@inethome.ca](mailto:rwlee@inethome.ca)

ONLINE ONLY PRE-BID LIVE VIRTUAL [www.fraserauction.com](http://www.fraserauction.com)



**1**  
RING



**DIRECTIONS:** GPS 49.193112,-101.306534

**From: Pierson, MB.** (Jct #3 & #256 hwy) 3.5kms west on #3 hwy to Melvin Rd (Rd 170W), 1.6kms north on Melvin Rd to Rd 13N, 0.3kms west on Rd 13N to sale site on north side

**From: Gainsborough, SK.** 11kms east on SK #18 or MB #3 hwy to Melvin Rd (Rd 170W), 1.6kms north on Melvin Rd to Rd 13N, 0.3kms west on Rd 13N to sale site on north side

**2**  
RING





## TRACTORS:

- 2014 JD 9460R 4WD tractor, 460hp, 800/70R38 Michelin duals, rear weight pkg on back inside and outside, Big 1000 PTO (never been used), 6 remote hyd with return line, Powershift trans, StarFire 3000 dome with JD 2630 monitor, Greenstar III, JD Command Centre monitor, hyd integrated auto steer, Deluxe cab with leather, Upgrade to fan drive, 2313hrs showing, always shedded, fresh engine oil and filter prior to sale, s/n1RW9460RCEP010953
- 2011 JD 9230 4WD tractor, 325hp, 620/70R42 Michelin duals, rear wheel weights, 4 remote hyd with return, StarFire 3000 dome with JD Brown Box controller, Hyd integrated auto steer, Power shift trans, updated greaseable bushing kit (in steering pivots) - 2 seasons ago, 2910hrs showing, s/n1RW9230PLAP022425, always shedded, fresh engine oil & filter prior to sale
- 2014 JD 6190R MFWD tractor, 190hp, JD H38D self levelling loader, 8ft snow bucket, Factory 3PT, Dual PTO, 4 remote hyd, 480/80R46 rear duals, 420/90R30 front singles, StarFire ITC dome, JD 2600 monitor, IVT transmission, Shuttle shift, JD command centre monitor, Green Star III monitor, 1687hrs showing, JD Green-light inspection done fall of 2022, s/n1RW6190RLED012088, fresh engine oil and filter prior to sale, always shedded

## HARVEST:

- 2012 JD S680 combine, JD 615P pickup header, Power folding hopper ext, Long auger, 650/85R38 dual drive rubber, 28L-R26 rear rubber, Fine cut chopper, StarFire 3000 dome with 2630 monitor, hyd integrated auto steer, Greenstar III system, Greenlighted every fall since Rick has owned this unit, and will be done again prior to sale, 2046 rotor hrs, 2632 eng hrs, factory concaves, set of pea concaves, always shedded, fresh engine oil & filter prior to sale, s/n1HOS680SHC0746806, Exhaust DELETE done prior to sale
- 2015 35ft JD 635F HydraFlex header, Pickup reel, JD S series adapter, 4-wheel Horst transport (transport is new used for approx 20 miles only), Light kit, Fore/aft, Single point hookup, s/n1H00635FJF0775127
- 2010 35ft JD 635D HydraFloat Draper header, Pickup reel, Pea auger, 700 acres since unit was Greenlighted, JD S throat adapter, poly dividers, 1 new canvas 700 acres ago, lateral tilt, plastic pickup fingers, gauge wheels, Light kit, single point hookup, self-transport, fore/aft, s/nH00635D730191
- 2001 Prairie Star 4940 swather, 30ft MacDon 962 harvest header, Ull pickup reel, Pea auger, single knife drive, updated 21.5L-16.1SL drive rubber, 3105 cutting hrs showing, 3958 eng hrs showing, always shedded, s/n142759
- 16ft MacDon 922 crimper hay header, 2 new knives 2022 (only 200 acres), steel crimp wheels, 1 owner unit, always shedded, s/n157423
- Demco 1050 grain cart, hyd drive, 18in unload auger, Goodyear 900/60R32 rubber, roll tarp, light kit, s/n2Z5015

## TRUCKS:

- 1997 Kenworth T800 t/a grain truck, 19ft x 68in box, remote hoist, and remote tailgate, roll tarp, hoist controls at rear, 11R22.5 rubber, Cummins N14, 460HP eng, Eaton Fuller trans, 386,801showing, VIN#1XKDD29X2VJ946043, Always Shedded, SAFETIED
- 1980 GMC 6000 Tag Axle grain truck, 15.5ft Box, 350 gas engine, 5+2 trans, VIN#T16DAAV564793
- 2008 Ford F-250 4x4 Super Duty XL super cab, 4 door,

V8 gas, auto trans, farm ball trailer ball plate in back, manual window and manual locks, 193,725showing, VIN#1FTSX21588EE34353, the following work was done to this truck in November of 2022: New battery, New Brake Pads, New front shocks, (parts and labour \$770.73 spent), New front tires

- 2001 Ford F-150 XL 2WD reg cab truck, long box, 4 speed Std trans with overdrive, V8 gas, 174,674showing, Manual windows/manual locks, VIN#2FTZF17231CA05982

## SPRAYER:

- 2013 JD 4730 SP sprayer, 100ft booms, 800 gal S/S tank, 5 way nozzle bodies, Fence Row nozzles, 20.8R38 flotation rubber, 320/90R46 narrow rubber, 4 S/S crop dividers, 5 section boom controls, 3in fill plumbing, S/S cone chemical mix hopper, 100 gal fresh water tank w/2in fill, 1 season on new pump, Fresh Greenlight prior to sale (has been Greenlighted annually last 3 years), StarFire 3000 dome with 2630 monitor, fully hyd integrated auto steer, Greenstar 3 software, 1478hrs showing, 1 owner unit, Always Shedded, still has factory plastic on seat, s/n1N04730XKDD0024028, Fresh engine oil & filter prior to sale

## SEED & TILLAGE:

- 50ft Seed Master SXG604 air drill, 12in spacing, DBL chute with fertilizer and NH3, DBL chute on seed boot, Pneumatic packers on row with scraper kit, extra set of fertilizer rollers plus full set seed rollers, 2 (300bus) tanks rear & 1 (20bus) tank front, all tanks on load sensors (scaled), air operated 5 sectional control, hyd tank winch, 8 IOS operated cameras with iPad for monitor, Raven Viper 4+ monitor, 380/55R16.5IMP front rubber, 750/65R26 duals on rear Complete spec sheet from dealer is included in pictures, Always shedded, 1 owner unit has only sowed approx 12,500 acres, s/nSM171332, 1 fan was put on new in 2022
- 60ft Gates Magnum Harrow, 5 bar heavy harrows, hitch mounted Valmar 3255 granular applicator (Valmar unit used 1 season approx 600 acres), custom cover, s/n13-124-60 (harrows), s/n325515002 (Valmar) Sells with a New in-cab control box and New wire harness
- 43ft Leon Vulcan II tillage, 3-bar Leon harrows, Beavertail shovels - 1 new side left, tank hitch, Front leveller wheels on wings, s/n110102
- 35ft Morris Magnum CP-631 chisel plow, bolt on beavertails, adjustable hitch, 3-bar harrows (harrows rough shape), Tank hitch
- Rock-O-Matic 546 PTO rotary stone picker
- 24ft Hutchmaster tandem disc, smooth front and back discs, scraper kit, approx \$5,000 spent in 2022 on parts & labour (bearing pins, shafts), s/n005557

## GRAIN HANDLING:

- Convey-All 1645-TL conveyor, 35HP Kohler Command Pro eng, hyd mover kit, Deluxe light pkg, pwr deflection spout, fully loaded Deluxe model, heater in oil tank for winter use, s/n25071611997, this is a fully loaded unit, it was Convey-All's display unit for Ag Days show, 1 owner unit
- Farm King 1385 PTO swing hopper auger, electric drive wheels on hopper, DBL augers in hopper, poly flex spout, reversible gear box, 1000 PTO, electric lift winch, s/nY138518000038
- Westfield 8x51 auger, 20HP Honda ES motor, poly flex spout, was bent but has been repaired, bin sweep pump and oil tank, s/n135456
- Sakundiak HD7x45 auger, Kohler Magnum 18HP (not running), hyd drive for bin sweep with oil tank, Wheatheart

bin sweep

- Westfield 10" PTO swing hopper auger, Single auger in hopper, 540 PTO, hyd drive on swing auger

## HAYING EQUIPMENT:

- 2006 JD 567 Mega Wide Silage round baler, 1000 PTO, dual hyd tie arms, 23,225 bales showing on monitor, s/nE00567X324628, Baler was Greenlighted 4 seasons ago and had pick-up rebuilt at that time, 1 owner unit
- 14-wheel Jiffy 714 V-Rake, 1 owner unit, s/n714070159
- 1981 NH Hayliner 315 square baler, quarter turn chute, 540 PTO, s/n607248
- Highline BM1400 dbl arm round bale picker, Updated HD Rubber - Firestone IF 280/70R15 tires, 1 owner, s/nBM14001694
- NH 1033 Stackliner square bale picker, 540 PTO, In cab controls s/n8452
- 35ft Bale wagon (steel pipe frame), 8.25R20 front rubber (duals), 10.00-20 rear rubber (duals)

## FEED PROCESSING:

- Highline Bale Pro CFR 650 bale processor, RH discharge, 1000 PTO, fine cut pkg, 1 turn left on knives, always shedded, s/nCFR6507943, 1 owner unit
- 1986 NH 358 mix mill with power blade feed, Mineral by-pass hopper, 540 PTO, 6 screens, 1 new turn left on hammers, new bearings, and gears in mix auger 2 years ago, s/n733306, always shedded

## LIVESTOCK EQUIPMENT:

- Leon Silver Spreader 575 T/A Hydra Push vertical beater manure spreader, 1000 PTO, 425/65R22.5 rubber, poly sides and floor, hyd end gate, used 3 seasons only on 200 head operation, used very little, 1 owner unit, s/n5750011007
- Approx 800-bus Easy Way creep feeder on skids
- (2) Ranchers Welding 250-bushel creep feeder on wheels, with feed panels, s/n1981
- Easy Way 250-bushel creep feeder, on wheel with feed panel
- Miami Welding 250-bushel creep feeder, on wheels, Creep panels, Rear mineral feed station
- (9) 30ft freestanding windbreak panels
- (8) 24ft freestanding windbreak panels

## FEED:

- Approx 250 round bales of hay (feed analysis done January 2023)

Many more items are included in this sale. Info and pictures available at [www.fraserauction.com](http://www.fraserauction.com)

**RING 1 LIVE VIRTUAL ONLINE  
RING 2 TIMED ONLINE AUCTION**

See [www.fraserauction.com](http://www.fraserauction.com) for complete listing

**FRASER AUCTION SERVICE LTD.**

Brandon, MB Auctioneer: Scott Campbell / Jesse Campbell

P: 204-727-2001 F: 204-729-9912 TF: 1-800-483-5856 E: [office@fraserauction.com](mailto:office@fraserauction.com) [www.fraserauction.com](http://www.fraserauction.com)

Licensed and bonded. P.L. License #918093. Member of M.A.A., S.A.A., A.A.A., A.A.C.

NOTE: Cheques of \$50,000 or more must be accompanied by bank letter of good standing. For more information on this please call Fraser Auction 204-727-2001

Not responsible for errors in description. Subject to conditions and or deletions. Property owners and Fraser Auction Service not responsible for any accidents, GST & PST where applicable.

TERMS: Visa, MasterCard, Debit, Cash, E-Transfer, Bank Wire Transfer, or cheque. Sale conducted by FRASER AUCTION SERVICE 1-800-483-5856 [www.fraserauction.com](http://www.fraserauction.com)





# RETIREMENT FARM AUCTION FOR GARDINER FARMS LTD.

WESTBOURNE, MB. | SATURDAY, APRIL 15TH | 12:00 NOON

FOR MORE INFORMATION OR TO BOOK A VIEWING, CONTACT SELLER  
BRUCE GARDINER 204-856-3997 call or text or email: gardinerfarms@live.ca

ONLINE ONLY PRE-BID LIVE VIRTUAL [www.fraserauction.com](http://www.fraserauction.com)



1  
RING



**DIRECTIONS:** GPS 50.255770,-98.644326

**From: (Jct #16 & #50 hways)**

11kms north on #50 hwy to Rd 85N

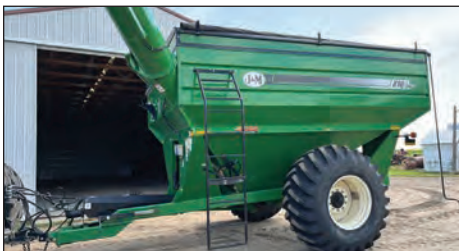
3.5kms east on Rd 85N to Lane #51055 (north side)

**From: Langruth, MB. (Jct #50 & #265 hways)**

15kms south on #50 hwy to Rd 85N

3.5kms east on Rd 85N to Lane #51055 (north side)

2  
RING





## TRACTORS

- 2010 NH T9040 4WD Tractor, 435hp, 710/70R38 dual rubber (only approx 300hrs on rubber), 5 remote hyd with return, rear weight pkg, fully hyd Integrated auto steer, Trimble Auto Steer, 750 Monitor, Powershift trans, Shuttle shift, buddy seat, 4475hrs showing, s/nZAF210146, (Approx 10 hrs on new Trans & hyd oil and filters).
- 2009 CaseIH Steiger 485 4WD Tractor, 485hp, 520/85R46 triples (only approx 200hrs on new rubber), 4 remote hyd with return, hyd Integrated auto steer, Trimble GPS, 750 Monitor, Powershift with shuttle, new engine controller put in Fall of 2022, new fuel pump put in fall of 2022, 3868hrs showing, s/nZ9F1132002
- 1992 Ford Versatile 9030 Bidi tractor, 105 HP, 8ft smooth edge bucket, 8ft bucket with 4 bale spikes, 8ft manure fork, 2 prong bale fork, 3 time grapple, 420/85R28 rubber, 3PT loader end, 3 remote hyd loader end, rebuilt hydrostatic and new rad, 13,199hrs showing, s/n487989
- 1986 JD 4250 2WD tractor, 144hp, Factory 3PT, dual PTO, 2 remote hyd, 18.4-38 single rubber (rear), 10.00-16 3 rib front rubber, Quad range trans, new Rad in 2021, 7790hrs showing, s/nRW4250H011663
- 1981 Case 2290 2WD tractor, 129 HP, 2 remote hyd, dual PTO, 18.4R38 rear with (clump on duals), 11.00-16SL front rubber, 9 front suitcase weights, Pwr Shift Trans, 9622hrs showing, s/n9912450

## HARVEST:

- 2015 NH CX8080 Elevation SP Combine, NH 790 CP-15 pick-up head, Michaels Crop Catcher, long auger, 900/60R32 Trelleborg front rubber, 600/65R28 Mitas rear rubber, dual chaff spreader, fine cut chopper, hopper ext, hyd wind guard, Iveco engine, full hyd Integrated Auto Steer, NH dome, IntelliView 4 monitor, 1405 Eng Hrs showing, 1078 rotor hrs showing, s/n581959041, This unit was put through NH Pro Check inspection at Mazer Group in Portage La Prairie, MB in December of 2022
- 2013 35ft NH 740CF-35 DD Super Flex header, pick-up reel, fore/aft, DBL knife drive, full finger auger, s/nYDH420021, sells with a Marc's AH36 6-wheel flex head T/A transport, s/n4109
- 2001 CaseIH 2388 AFS SP combine, CaseIH 2015 pick-up, long auger, Maurer hopper topper, hyd wind guards, standard rotor, standard & wide wire concaves, 30.5L-32 drive rubber, 14.9-24 rear rubber, internal chopper, Trimble GPS, EZ-Steer wheel motor, FM 500 Monitor, AFS Monitor, Yield and Moisture, 2320 rotor hrs showing, 2895 Eng hrs showing, s/nJJC0269809, Very few hours since Injection Pump was done, very few hours since Turbo done, Hydrostatic pump done approx 3 years ago, Chopper redone in 2021, Rub Bars redone in 2021
- 1994 30ft CaseIH 1020 Flex header, pick-up reel, fore/aft, s/nJJC0093826
- 1999 30ft CaseIH 1010 Rigid header, pick-up reel, fore/aft, s/nJJC0302411
- 2012 Westward M155 Dual Direction SP swather, 30ft MacDon D60D Draper header, split pick-up reel, MT 2000 10ft poly rear mount swather roller, DBL swather, single point hook-up, fore/aft, lateral tilt, DBL knife drive, 600/65R28 drive rubber, 1 New canvas to go with unit, 742 Eng hrs showing, 621 Cutting hrs showing, s/n223348
- 10ft Farm King metal swath roller
- J&M 810 X-Tended Reach S/A Grain Cart, 18in front unload auger, scale with Digi-Star Auto Log digital scale head, hyd deflection spout, hyd drive and PTO drive, 30.5L-32 rubber, roll tarp, light kit, s/n1402617

## TRUCKS:

- 2000 Kenworth T600 T/A Highway Tractor, 64in bunk, 22.5 rubber, 380hp C12 Cat engine, 13 speed trans, 337,937showing, SAFETIED, VIN#1XKADU9XX9R960602

- 1997 Mack E7-427 T/A Highway Tractor, 64in bunk, 22.5 rubber, 427 Mack engine, 18 speed Mack trans, 499,766showing, SAFETIED, VIN#1M1AA18YVW079141
- 1990 Kenworth T800 T/A Highway Truck, 40in bunk, 425hp Detroit Series 60 engine, 13 speed trans, 22.5 rubber, 073172showing, SAFETIED, VIN#2XKDDR9X4LM925855
- 2003 Mack Vision T/A Grain truck, 20ft Neustar Box, 11R24.5 rubber, Remote tailgate and remote hoist, Pintle Hitch, Air supplies at rear, Rear hoist controls, 460 Mack engine, 18 speed trans, Air ride, 614,640showing, 12,000lbs front, 40,000lbs rear, SAFETIED, VIN#1M1AE07Y63W015220
- 1978 GMC Brigadier Tag Axle Grain Truck, 20ft Box, roll tarp, 10.00-20 rubber, 671 Detroit DSL engine, 5+2 trans, 3566 hours showing, 725,152 showing, 10,860lbs front, 40,000lbs rear, Cab mount Red Dot AC, VIN#TH1908V582129
- 1967 Chev 50 s/a grain truck, 16ft B+H, 9.00-20 rubber, 350 gas engine, 5+2 trans, 95,013showing, VIN#CE5371110968
- 1953 GMC 9500 s/a truck, 235 gas engine, 17.50-20 front rubber, 8.25-20 rear dual rubber, 12' deck frame with hoist (deck needs TLC), 57,164 showing, VIN#
- 1995 Chevy 2500 Silverado 4x4, Ext cab, long box, 6.5 Turbo DSL engine, Automatic trans, Power windows and locks, 403,869 showing, (approx 50,000kms on rebuilt engine + injection pump), VIN#1GCGK29F9SE251990

## TRAILERS:

- 2014 45ft Lode King Prestige Tri-Axle Hopper Bottom Grain Trailer, roll tarp, DBL hopper, Air gauges, 22.5 rubber, SAFETIED, VIN#2LDHG4535EF058306
- 2009 36ft Lode King Prestige T/A hopper bottom grain trailer, DBL hopper, 22.5 rubber, roll tarp, SAFETIED, VIN#2LDHG36289F048343
- 1993 Custom Built 28ft Aluminum T/A Flat Deck Water Trailer, front aluminum salt shield, under deck Ace toolbox, 24.5 rubber, 4250-gal black poly water tank, 3" Chem Handler III chemical system, Wet Jet 3" water pump with Honda GX200 engine, back removable racks, Spring ride suspension, SAFETIED, VIN#2SAAQM19311160892

## CRAWLER DOZER:

- 1974 Komatsu D85A Series 12 Crawler Dozer, 13ft blade, 24in pads, rear hitch, Power shift, s/n12804
- 11.5ft Beales root rake fits Komatsu D85 Crawler

## SEED & TILLAGE:

- 2014 50ft Bourgault 9400 Tillage, 4in Knock on spoons, 4 bar harrow, light kit, 12in spacing, s/n41814CP-02, This unit has been used very little
- 2005 54ft Bourgault 5710 Series II Air Seeder, 10in spacing, 3/4in carbide tip openers, Bourgault MRB, rubber over steel HD packer, DBL chute, Light Kit, s/n38218AH-07
- 2014 Bourgault 6550ST 4-Compartment air cart, 3 metering rolls, self loading auger, hyd bag lift, 650/75R34 duals on rear, 540/65R24 steering axle, Dbl fans, dual chute, Cameras in 2 tanks, cameras hook-up to 750 Monitor (Not Included), 591 Monitor, s/n41606AS-01
- 2004 40ft Bourgault 8810 tillage, Raven NH3 Super Cooler with variable rate Raven control, 8in spacing, 4 bar harrows, 4in Knock-on spoons, s/n37740CU-06
- 70ft Summers Heavy Harrows, 5 bar harrows, New 5/8 tines in 2021, hyd angle on tines, s/nL2157
- 45ft Degelman 7645 Land Roller, s/nLR6479
- 14ft Degelman PTO rock rake, s/nNA
- Rock-O-Matic 57 High Lift Rotary stone picker, 540 PTO drive, tandem walking beam axles, s/nOH79382
- 50ft Power-Matic 110 harrow/Packer bar, P20 coils, 5-bar harrows, auto fold

## GRAIN HANDLING:

- Vertec 5500 Continuous Propane Fired Grain Dryer, PTO Fan, single phase control, axle kit with tires, wet/dry augers with

- electric motors, return auger with electric motor, s/n5597163
- Buhler/Farm King 13x85 PTO swing hopper auger, hyd mover wheels on hopper, hyd steering axles, DBL auger in hoppers, reversible gear box, poly Never Spill spout, Light Pkg, 540 PTO, s/n21913339
- Sakundiak HD8-1400 auger, Hawse Agri 2-wheel hyd mover, 27HP Kohler Command Pro Engine with cold weather kit, 2 electric clutch switches, hyd winch, s/n69229
- Sakundiak HD8x45 auger, 16HP Kohler Magnum Engine, 12-volt electric lift winch, s/n19524
- Sakundiak HD7x45 auger, 18HP B+S Engine, hyd lift winch, hyd self mover, bin sweep drive, s/n34933

## BINS:

- BIN #1, 6400 Bushel Meridian Grain Max hopper bottom bin, Triple skid, site glasses, mounted ladder aeration rocket, 7HP Grain Guard aeration fan, Bin s/n6220140747727, Fan s/n2014FC64401
- BIN #2, 5300 Bushel Meridian Grain Max hopper bottom bin, DBL skid, 3 site glasses, lid opener, mounted ladder, aeration rocket, 5HP Grain Guard aeration fan, roof vent, Fan s/n221015103
- BIN #3, 5300 Bushel Meridian Grain Max hopper bottom bin, DBL skid, 3 site glasses, mounted ladder, lid opener, aeration rocket, 5HP Grain Guard aeration fan, roof vent, Bin s/n622110333771, Fan s/n221015100
- BIN #4, 5300 Bushel Meridian Grain Max hopper bottom bin, DBL skid, 3 site glasses, lid opener, mounted ladder, aeration rocket, 5HP Grain Guard aeration fan, Bin s/n6220130843613, Fan s/n2013FC53006
- BIN #5, 5300 Bushel Meridian Grain Max hopper bottom bin, DBL skid, 3 site glasses, lid opener, mounted ladder, aeration rocket, 5HP Avonlea aeration fan, Bin s/n6220131044165, Fan s/n36H529X121G1
- BIN #6, 1950 Bushel Westeel Roscoe Bin on Retro hopper cone, on legs, mounted ladder, lid opener
- BIN #7, 1950 Bushel Westeel Roscoe Bin on Retro hopper cone, on legs, mounted ladder, lid opener
- BIN #8, 1950 Bushel Westeel Roscoe Bin on Westeel hopper cone, on legs
- BIN #9, 1950 Bushel Metal Industries Bin on Retro hopper cone, on legs
- BIN #10, 1250 Bushel Metal Industries Hopper Bin, on legs, mounted ladder
- BIN #11, 1250 Bushel Metal Industries Hopper Bin, on legs, mounted ladder
- BIN#12, 2000 Bushel Meridian Grain Max hopper bottom bin, on legs, mounted ladder, lid opener, s/nW05228
- BIN#13, 5900 Bushel Westeel flat bottom bin, on cement, mounted ladder, lid opener
- BIN#14, 3300 Bushel Westeel flat bottom bin, on cement
- BIN#15, 3300 Bushel Westeel flat bottom bin, on cement
- BIN#16, 3300 Bushel Westeel flat bottom bin, on cement
- BIN #17, 4250 Bushel Westeel-Roscoe Flat Bottom Bin, on cement (damaged)

Many more items are included in this sale. Info and pictures available at [www.fraserauction.com](http://www.fraserauction.com)

**RING 1 LIVE VIRTUAL ONLINE**  
**RING 2 TIMED ONLINE AUCTION**

See [www.fraserauction.com](http://www.fraserauction.com) for complete listing

**FRASER AUCTION SERVICE LTD.**

Brandon, MB Auctioneer: Scott Campbell / Jesse Campbell

P: 204-727-2001 F: 204-729-9912 TF: 1-800-483-5856 E: [office@fraserauction.com](mailto:office@fraserauction.com) [www.fraserauction.com](http://www.fraserauction.com)

Licensed and bonded. P.L. License #918093. Member of M.A.A., S.A.A., A.A.A., A.A.C.

NOTE: Cheques of \$50,000 or more must be accompanied by bank letter of good standing. For more information on this please call Fraser Auction 204-727-2001

Not responsible for errors in description. Subject to additions and or deletions. Property owners and Fraser Auction Service not responsible for any accidents. GST & PST where applicable.

TERMS: Visa, MasterCard, Debit, Cash, E-Transfer, Bank Wire Transfer, or cheque. Sale conducted by FRASER AUCTION SERVICE 1-800-483-5856 [www.fraserauction.com](http://www.fraserauction.com)





# RETIREMENT FARM AUCTION FOR THE CHEWINGS FAMILY

DAVID & MARION AND DARRYL CHEWINGS  
CLEARWATER, MB. | MONDAY, APRIL 17TH | 12:00 NOON  
FOR MORE INFORMATION OR TO BOOK A VIEWING, CONTACT SELLER  
DAVID CHEWINGS 204-873-3880 (House) OR 204-873-2631 (Shop)

**ONLINE ONLY PRE-BID LIVE VIRTUAL** [www.fraserauction.com](http://www.fraserauction.com)



**1**  
RING



**DIRECTIONS:** GPS 49.0799, -99.0795

From Mather, MB. (Jct #3 & #442)

13.2kms east on #3 hwy to Mile 72W

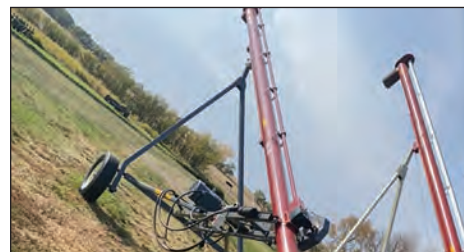
1km south on Mile 72W to Lane #5060 on west side

From West Jct of #3 & #34 hwy's

10kms west on #3 hwy to Mile 72W

1km south on Mile 72W to Lane #5060 on west side

**2**  
RING





**TRACTORS:**

- 1995 JD 8870 4WD, 300hp, quad range trans, 3 remote hyd, return line, 20.8R42 duals (inside 4 are new), Trimble CFX 750 with EZ Steer wheel motor & AG25 GNSS dome, 6795hrs showing, (50 hours since, new oil pan, new turbo, new rear seal), New starter and 2 new batteries, s/nRW8870S003125
- 1991 JD 8760 4WD, 300hp, quad range trans, 4 remote hyd, return line, 520/85R42 duals (inside 4 are like new), 7864hrs showing, s/nRW8760S003989
- 1984 JD 8650 4WD, 290hp, quad range trans, 1000 PTO, 3 remote hyd, return line, 20.8-38 duals (4 inside like new), 9768hrs showing, (hyd pump has been redone), s/nRW8650H006138
- 1981 JD 4440 2WD, IH 2350 loader w/6' bucket, 144hp, 8-speed pwr shift, 2 remote hyd, dual PTO, 18.4-38 factory duals, 11.00-16 4-rib front rubber, 1991hrs showing, s/n4440P047717R
- 1968 JD 3020, Pwr shift trans, Groening after market 3pt, 2 remote hyd, Dual pto, 18.4-30 single rear rubber, 7.50-16 front rubber, 0553 hrs showing, s/n106497R
- Trimble NH FM-750 monitor, EZ-Steer wheel motor, EZ Steer Terrain Compensator, foot pedal, AG25 GNSS dome

**HARVEST:**

- 1994 JD 9600 sp combine, JD 914 pick-up (7 belt), Maurer hopper ext, long auger, fine cut chopper, Horvick spreader, Goodyear 30.5L-32 drive rubber (only 3 seasons old), 3132sep hrs showing, 4080eng hrs showing, s/n09600X657160, new knives on chopper (0 acres), New water pump (90 acres), New pick-up belts (300 acres)
- 1995 Premier 2900 sp swather, 30' MacDon 960 header, New knife, pick-up reel, mounted poly roller, Cummins dsl engine, 2878hrs showing, s/n99005 (tractor unit), s/n97325 (header)
- 25ft CaselH 725 pt swather, batt reel, s/nC003449
- Parker 4500 grain cart, 1000 PTO unload, roll tarp, 12" unload auger, 23.1-26 Diamond tread rubber

- 8ft poly swath roller
- 6ft metal swath roller

**TRUCK:**

- 1998 Ford F-150 XL Ext Cab, 4x4, 3 door, Triton V8 gas engine, automatic trans, 242,962 showing, new battery, VIN# 1FTZX18W9WKA39782
- 1986 Ford F-800 s/a grain truck, 16' Cancade B+H, roll tarp, 429 gas engine, 5+2 trans, 138,514 showing, VIN# 1FDPF82K6GVA33815

**SEED & TILLAGE:**

- 32ft JD 1060 seeding tool, JD 777 air cart, 3-rows of leading shanks, rear DD seeding, 7.5" spacing, 2" packers, 2-row harrows, single chute, hyd fan, drill s/nNO1060X000216, cart s/nNO077X000888, (newer tires on air cart)
- 42ft Flexi-Coil 300B tillage, 3-bar harrows, Beaver Tails (one new side), s/nBVA00000-NO52442
- 41ft JD 1600 tillage, John Blue NH3 kit, 3-bar harrows, s/nE1600-019685N
- 47ft CaselH 4700 Vibra Tiller, 3-bar harrows, bolt-on sweeps, s/n0250000C003861
- 63ft hyd harrows w/fibreglass tank (no pump)

- Crown fork type stone picker, s/n4005

- 62ft Wilger pt field sprayer, 500-gal poly tank, PTO pump, s/n1283745

**GRAIN HANDLING:**

- Farm Fans AB120A propane grain dryer, sells with 7" wet grain auger with electric motor, has a hitch but NO wheels, s/n9-1238
- Meridian HD8-39 auger, Super Edge Flighting, reversing gearbox, 7.5hp 1ph electric motor, starter switch, s/n36-09504, (bought NEW in 2019)
- Farm King CX8-51 auger, 7.5hp 1ph electric motor, starter switch, s/nCX851-15000005, (bought NEW in 2014)
- Buhler Farm King 8-41 auger, 7.5hp 1ph electric motor, starter switch, s/n21053849, (bought NEW in 2009)

- Farm King 8-46 auger, 7.5hp 1ph electric motor, starter switch, s/n8119454
- Farm King 8-31 auger, 5hp 1ph electric motor, switch, s/n9115684
- Midwest 552 vac, 540 PTO, rubber & steel hoses, s/nMW-93-552-2350
- 10ft Forever grain leg (NEW) never used
- Mini poly auger hopper
- (5) Poly auger hoppers
- 11ft Farm King hyd drive pencil auger
- 15ft yellow hyd drive pencil auger
- 16ft white hyd drive pencil auger
- Westfield 7-46 auger (motor NOT running)
- Westfield 7-41 auger (motor NOT running)

**TIRES:**

- Firestone 14.9-24 tire 12-ply Champion Spade Grip on 9-bolt rim (like new)
- New Firestone 7.50-15 tire on used 6-bolt rim
- Used 9.5L-15 tire on 6-bolt rim

**MISC:**

- Labtronics 919 LT moisture tester w/scale s/n87291
- Approx 120-gal Skid tank w/12-volt Fil-Rite pump
- 1000-gal poly tank on 12-ton Farm King 4-wheel wagon s/n800660
- Single axle 7x8 sled trailer (NO TOD)
- Diamond box fertilizer V-tank
- 40ft aluminum ext ladder
- NEW 18' Can-Arm barn fan w/louvers
- 2" Banjo pump w/5hp B+S engine

Many more items are included in this sale. Info and pictures available at [www.fraserauction.com](http://www.fraserauction.com)

**RING 1 LIVE VIRTUAL ONLINE  
 RING 2 TIMED ONLINE AUCTION**

**See [www.fraserauction.com](http://www.fraserauction.com) for complete listing**

**FRASER AUCTION SERVICE LTD.**

**Brandon, MB Auctioneer: Scott Campbell / Jesse Campbell**

**P: 204-727-2001 F: 204-729-9912 TF: 1-800-483-5856 E: [office@fraserauction.com](mailto:office@fraserauction.com) [www.fraserauction.com](http://www.fraserauction.com)**

**Licensed and bonded. P.L. License #918093. Member of M.A.A., S.A.A., A.A.A., A.A.C.**

**NOTE: Cheques of \$50,000 or more must be accompanied by bank letter of good standing. For more information on this please call Fraser Auction 204-727-2001**

**Not responsible for errors in description. Subject to additions and or deletions. Property owners and Fraser Auction Service not responsible for any accidents. GST & PST where applicable.**

**TERMS: Visa, MasterCard, Debit, Cash, E-Transfer, Bank Wire Transfer, or cheque. Sale conducted by FRASER AUCTION SERVICE 1-800-483-5856 [www.fraserauction.com](http://www.fraserauction.com)**





# RETIREMENT FARM AUCTION FOR ALAN & BRENDA STEIN

MOOSOMIN, SK. | TUESDAY, APRIL 18TH | 12:00 NOON

FOR MORE INFORMATION OR TO BOOK A VIEWING, CONTACT SELLER  
ALAN & BRENDA STEIN 1-306-435-6938 call or text or email: a\_bstein@live.ca

ONLINE ONLY PRE-BID LIVE VIRTUAL [www.fraserauction.com](http://www.fraserauction.com)



**1**  
RING



**DIRECTIONS:** GPS 50.115140,-101.608929

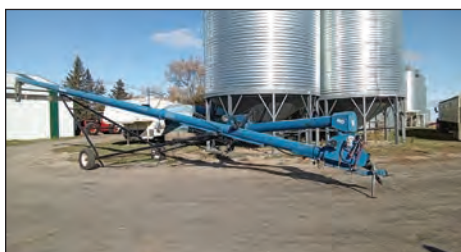
**From: Moosomin, SK. (Jct #1 & #8 hwy)**

6.8kms east on #1 hwy, 0.3kms south across Rail  
Tracks, West down lane into sale site

**From: Fleming, SK.**

8.4kms west on #1 hwy, 0.3kms south across Rail  
Tracks, West down lane into sale site

**2**  
RING





## TRACTORS:

- 1994 JD 8770 4WD tractor, 300hp, 3 remote hyd with return, 650/65R38 duals - (2 inside front rubber - new 2022), Quad range trans, radar ground speed sensor, 9221hrs showing, s/nS001899
- 1981 Versatile 835 4WD tractor, 230hp, 4 remote hyd, standard trans, 24.5-32 single rubber, 5312hrs showing, s/n035127
- 1988 CaselH 7110 2WD tractor, 144hp, 3 remote hyd, 520/85R38 single rear rubber, 11.00-16 front rubber, dual PTO, 18 speed Powershift trans, 6044hrs showing, s/nJJA0005472
- 1967 JD 4020 2WD Tractor, 101hp, JD 148 loader with 5ft JD bucket, cab, 2 remote hyd, dual PTO, 23.1-30 rear single rubber, 11.00-16.1 front rubber, Powershift trans, 6374hrs showing, s/n165801R

## HARVEST:

- 1991 JD 9500 SP combine, JD 914 pick-up head, standard auger, JD sieves, Cray Cyclone hyd chaff spreader, Goodyear 30.5L-32 drive rubber, Titan 14.9-24 rear rubber, fine cut chopper, 2795Sep hrs showing, 3679Eng hrs showing, s/nH09500X642441
- Cray Big Top hopper extension, (Fits JD 9500)
- 2000 30ft JD 930R header, pick-up reel, single knife drive, Trail Tech transport, s/nR686860
- Bruns 400 Gravity Box on Horst HD wagon, Michael's roll tarp, 315/80R22.5 rubber
- 1995 Prairie Star 4900 sp swather, 30ft MacDon 960 Draper head, pick-up reel, fore/aft, 21.5L-16.1SL drive rubber, 3910hrs showing, s/n99189
- 25ft CaselH 725 pt swather, 540 PTO, batt reel, rubber slat canvas, s/n003851

## TRUCKS:

- 1993 IH Eagle t/a highway tractor, 42in bunk, 425hp Detroit 60 Series engine, Eaton Fuller 18 spd trans, 11R22.5 rubber, 280,187 showing, VIN#2HSFHD7R6PC067436
- 1985 IH S1600 s/a grain truck, 15ft Super box grain box, roll tarp, 11R22.5 rear rubber, 10.00-20 steering rubber, 6.9 litre DSL engine, 5+2 trans, 7500lbs fronts (3402 kg), 19000lbs rear (8618 kg), 152,844 showing, VIN# 1HTLAHGP9FHA35986
- 1976 GMC 5000 s/a grain truck, 12ft box and hoist, 8.25-20 rubber, V8 gas engine, 4 speed standard trans, 29,216 showing, VIN#TCE536V576661
- 2007 Chevrolet 1500 Z71 4x4 pickup truck, ext. cab 4 door - (swing back backdoors), auto trans, 5.3L Vortex V8 gas engine, power windows and locks, 192,234 miles showing, VIN#1GCEK19B87Z138790

## TRAILERS:

- 2015 40ft Maurer t/a hopper bottom steel grain trailer, roll tarp, spring ride, 285/75R24.5 rubber, site glasses, DBL hopper, VIN#57CKG4023FS000089, (SASK) SAFETY
- 18ft Blue Hills t/a stock trailer, wood floor, single partition gate
- 21.5ft Terry Resort t/a 5th wheel camper, master bed

- over hitch, fold down table, couch, stove, fridge, bathroom (shower), awning, outdoor mat included, outdoor shower

## SEED & TILLAGE:

- 40ft Bourgault 5710 Series II air drill, Bourgault 5250 air cart, 10in spacing, 3/4in carbide tip openers, Bourgault Mid Row Banders, Green Drop Liquid fertilizer kit, 3.5in steel packers, single chute, triple compartment cart with 3 metering boxes, single hyd fan, self loading auger, Cart s/n36654AS-01, Drill s/nNA (Tag is under MRB mount)
- Bandit 1700 liquid fertilizer caddy, V-bottom poly tank, John Blue ground drive fertilizer pump, 2HP Honda fill pump, 21.5L-16.1SL rear rubber, 16.5L-16.1 front rubber, freshwater wash tank
- 32ft Morris Magnum CP-631 chisel plow, 3 bar harrows, bolt on beaver tail shovels (1 turn left), manifolds and hoses for liquid dribble bander, adjustable hitch, tank hitch
- 16ft Kello-Bilt 225 offset disc, notched blades front and back, scraper kit, s/nKEM0162695R
- Degelman R570S rotary stone picker, ground drive with clutch, rock apron, s/n12462
- 96ft Harmon Blanchard Auto Fold pt sprayer, 800-gal ploy tank, hyd pump, chemical mix tank, wind cones, s/nA01057
- 50ft Flexi-Coil harrow packer bar, P20 coils, 4-bar harrows, s/n400910

## GRAIN HANDLING:

- Wheatheart R10-51 auger, self mover kit, 35HP B+S Vanguard engine, 3 belt drive, Wheatheart bin sweep, hyd lift winch, 2 electric clutch switches, fully loaded auger
- Brandt 10x60 PTO swing hopper auger, single auger in hopper, reversible gear box, s/n41365-A
- Brandt 10x60 PTO swing hopper auger, single auger in hopper, Never Spill poly spout, light kit, 540 PTO, reversible gear box, s/n41444A
- Brandt 7x45 auger, Honda 20hp ES engine, s/n26947A
- Sakundiak HD7-1600 auger, NO motor, s/n48949

## BINS:

- BIN#1, 4500 Bushel (18ft Dia) Meridian Bin on Vale hopper cone, DBL skid, aeration trough, 5HP Grain Guard Aeration Fan, mounted ladder, lid opener, roof vent
- BIN#2, 4500 Bushel (18ft Dia) Meridian Bin on Vale hopper cone, DBL skid, aeration tube, 5HP Flaman Aeration Fan, mounted ladder, lid opener, roof vent
- BIN#4, 1800 Bushel Westeel Roscoe Bin on Flash Welding hopper cone, single skid, tube aeration, 3HP Caldwell Aeration fan, lid opener
- BIN#5, 1800 Bushel Metal Industries Bin on Kevin's Custom hopper cone, DBL skid, lid opener
- BIN#6, 3200 Bushel (15ft Dia) Westeel Bin on hopper cone, DBL skid, 3HP aeration fan, Aeration rocket

- BIN#7, 3200 Bushel (15ft Dia) Westeel Bin on Westeel Econo hopper cone, triple skid, 3HP Grain Guard aeration fan, aeration rockets
- BIN#8, 2700 Bushel Westeel Bin on hopper cone, 3HP Grain Guard Aeration Fan, aeration rocket, lid opener, mounted ladders
- BIN#9, 1500 Bushel Westeel Roscoe Bin on hopper cone, DBL skid, NO aeration, lid opener
- BIN#10, 1500 Bushel Westeel Roscoe Bin on hopper cone, DBL skid, NO aeration, NO lid opener
- Grain Guard 60,000 BTU supplemental propane heater, s/n5942

## TANKS:

- 1000-gal Northern Steel fuel tank, Tuthill FR700 115-volt pump and nozzle
- 135-gal Westeel skid tank with Fill-Rite 13 GPM 12-volt pump
- 8300-gal green poly tank (used for fertilizer)
- 1750-gal black poly tank (used for fertilizer)
- 1250-gal poly water tank

## LIVESTOCK EQUIPMENT:

- 2001 NH 688 Auto Wrap rd baler, 540 PTO, bale kicker, s/n402
- (2)30ft freestanding windbreak panel
- (2)15ft bunk feeder (drill stem frame with belting bottom) 15ft long x 24in wide x30in height, built on drill stem skids
- 27ft panel for fence feeding (no legs)
- (4)30ft freestanding panel 2 7/8 drill stem
- 30ft freestanding panel 2 3/8 drill stem
- (2)16ft gate with 360-degree hinge
- (3)14ft gate with 360-degree hinge
- New 6ft x 3in treated fence post
- Skirted bale feed ring (M)
- Horse feeder round ring bale (N)
- (12) Std round bale feed ring

Many more items are included in this sale. Info and pictures available at [www.fraserauction.com](http://www.fraserauction.com)

**RING 1 LIVE VIRTUAL ONLINE  
RING 2 TIMED ONLINE AUCTION**

See [www.fraserauction.com](http://www.fraserauction.com) for complete listing

## FRASER AUCTION SERVICE LTD.

Brandon, MB Auctioneer: Scott Campbell / Jesse Campbell

P: 204-727-2001 F: 204-729-9912 TF: 1-800-483-5856 E: [office@fraserauction.com](mailto:office@fraserauction.com) [www.fraserauction.com](http://www.fraserauction.com)

Licensed and bonded. P.L. License #918093. Member of M.A.A., S.A.A., A.A.A., A.A.C.

NOTE: Cheques of \$50,000 or more must be accompanied by bank letter of good standing. For more information on this please call Fraser Auction 204-727-2001

Not responsible for errors in description. Subject to additions and or deletions. Property owners and Fraser Auction Service not responsible for any accidents. GST & PST where applicable.

TERMS: Visa, MasterCard, Debit, Cash, E-Transfer, Bank Wire Transfer, or cheque. Sale conducted by FRASER AUCTION SERVICE 1-800-483-5856 [www.fraserauction.com](http://www.fraserauction.com)





*DREAM. GROW. THRIVE.*

## Are you ready for auction season?

Apply for pre-approval  
financing now

Head to the auction with confidence  
knowing you're already pre-approved  
with financing in your back pocket.  
It's quick, convenient and turns you  
from a tire kicker to a deal maker.

1-888-332-3301





# Ag Equipment Reconditioning

## *Specializing in farm machinery and semi-tractors*

**BEFORE**



**AFTER**



**BEFORE**



**AFTER**



**BEFORE**



**AFTER**



**BEFORE**



**AFTER**



My brothers and I can't thank Wally and his team at **Roblin Detail N' Shine** enough for the outstanding job they did with our machinery and trucks. Everything was spotless to the most minute detail, helping us obtain some great prices.

Thank you so much

*Duane, Jack, Phil Edwards & families, Deloraine, MB  
April 7, 2017*

In preparation for our action sale, **Roblin Detail N' Shine** provided services to make our farm equipment look very appealing for sale day. We were certain that it was a good investment in both time and money.

*Murray & Linda Mathison, Hamiota, MB  
April 18, 2018*

**#1 Choice for farm sale clean-up through MB & SK**



**ROBLIN DETAIL N' SHINE**

*Driving up the value of your  
equipment is our specialty!*

**Contact Wally  
204.937.3030  
OR  
204.937.0720**





# RETIREMENT FARM AUCTION FOR BUTCHER FARMS LTD.

BIRTLE, MB. | WEDNESDAY, APRIL 19TH | 12:00 NOON

FOR MORE INFORMATION OR TO BOOK A VIEWING, CONTACT SELLER  
GARTH BUTCHER 204-773-0650 call or text email: garthfbutcher@gmail.com

ONLINE ONLY PRE-BID LIVE VIRTUAL [www.fraserauction.com](http://www.fraserauction.com)



**DIRECTIONS:** GPS 50.442474,-100.922848

**From: Birtle, MB. (Jct #83 & #42 hwy's)** 8.3kms  
east on #42 hwy to PR472, 2.8kms north on PR472  
to sale site on east side.

**From: Shoal Lake, MB. (Jct #16 & #42 hwy's)**  
25.5kms west on #42 hwy to PR472  
2.8kms north on PR472 to sale site on east side.

**From: Solsgirth, MB. (Jct #16 & #472 hwy's)**  
6.4kms south on PR472 to sale site on east side.  
**From: (Jct #42 & #472 hwy's)** 2.8kms north on  
PR472 to sale site on east side.





## TRACTORS:

- 2014 Versatile 450 4WD tractor, 450hp, Michelin 710/70R42 duals, 4 remote hyd with return, mounted tow cable, Powershift trans, Versatile A6 BC client software, Trimble auto steer, EZ-Steer wheel motor, FM 750 monitor, 55-GPM hyd pump, 1838hrs showing, s/n 705178, Deletion done
- 2006 Versatile 2375 4WD tractor, 375hp, Firestone 710/70R38 duals, full set of front suitcase weights (39) 30kg plates, full set of rear suitcase weights (57) 30kg plates, 4 remote hyd with return, Quad range trans, Trimble auto steer, EZ-Steer wheel motor, FM 500 monitor, 45-GPM hyd pump, 4596hrs showing, s/n 303389, Shoal Lake Farm Equipment changed all oils in axles and planetaries May 2022

## HARVEST:

- 2015 NH CX8080 Elevation combine, NH 790CP pick-up header, hyd wind screens, on board air-compressor, power folding hopper, Al reverser, 620/70R42 dual drive rubber, 600/65R28 rear rubber, extra fine chopper, long auger, deluxe cab with leather, Iveco engine, hyd integrated auto steer, NH dome, Intelliview 4 monitor, lateral tilt on feeder house, CR chaff spreader - variable speed, HD lift cylinder upgrade for header lift, 1148rotor hrs showing, 1583eng hrs showing, s/n581961009, Complete NH inspection / repairs done January 2023-Mazer Group Shoal Lake, MB
- 2016 35ft MacDon D65-S Draper header, split pick-up reel, pea auger, fore/aft, low speed self transport, throat adapter fits NH and CaseIH, lateral tilt, single knife drive, single point hook-up, has an extra knife in tube, s/n296482
- 2012 Brandt 1020XR s/a Grain Cart, hyd drive, hyd chute deflection spout, 20in unload auger, Goodyear 900/60R32 Optitrac rubber, roll tarp, s/n101530
- 2009 MF 9220 sp Swather, 30ft 5200 Series Draper header, Ull pick-up reel, fore/aft, belly mount metal swath roller, rear weight plate, single knife drive, Firestone 18.4R26 drive rubber, 1319hrs showing, s/nHU08196
- (30) Schumacher Model AS-100/2 crop lifters, like new

## SPRAYER:

- 2011 Apache AS1020 sprayer, 100ft boom, 1000-gal poly tank, triple nozzle bodies, 520/85R46 rear flotation rubber, 380/80R38 front rubber, 380/90R46 rear in-crop rubber, 5 section boom controls, 2in fill plumbing, front poly crop dividers, rear crop dividers Moulson's Welding steel, hyd integrated auto steer, Raven Viper Pro monitor, Apache Tech screen, and monitor, 1559hrs showing, s/n9110326

## TRUCK & TRAILERS:

- 2009 IH Eagle Pro Star t/a highway tractor, 48in bunk, 11R22.5 rubber (New spring 2022), full poly fender kit, Merritt saddle box toolbox, 485hp Cummins ISX engine, Eaton Fuller 18 speed trans, 12,350lbs fronts, 40,000lbs rear, Moulson's Welding HD rear hitch and electrical outlets for moving equipment, 996,200 showing, SAFETIED, VIN#2HSCUAPRX9C049960
- 2009 Mack Pinnacle CXU 613 t/a highway tractor, 54in bunk, 22.5 rubber (New spring 2022), Magnum frame mount checker plate toolbox, 485hp MP8-485C Mack engine, Eaton Fuller 18 speed trans, 12,000lbs front, 40,000lbs rears, 916,484showing, SAFETIED, VIN#1M1AW07Y99N004580
- 2010 36ft Doepker t/a hopper bottom grain trailer, roll tarp, 22.5 rubber (like new), air ride, air gauges, SAFETIED, VIN#2DEGBS222A1026404
- 2003 42ft Doepker triple axle hopper bottom grain trailer, triple hopper unit, roll tarp, 24.5 rubber, SAFETIED, VIN# 2DEGBS3631014252

- 1996 Advance Aluminum t/a tanker trailer, 32,200-litre tank, 22.5 rubber (like new), SAFETIED, VIN#2AEARPAC8TV000153

## SEED & TILLAGE:

- 2010 47ft Morris Contour I air drill, Morris 8370 Eight Series XL air cart, 12in spacing, on row 5in pneumatic packers, Atom Jet 1in DBL shoot carbide tip openers, (centre discharge and single sided wing discharge), weight kit, 10in self loading auger with low profile hopper, 800/65R32 rear rubber, 500/70R24 casters (new), single hyd fan, DBL shoot, front tank 83 bushel, centre tank 174 bushel, rear tank 186 bushel, Drill s/nCD47090095, Cart s/nX370090177
- 2015 56ft Versatile C600 tillage, Raven Accu-Flow Super Cooler variable rate NH3 kit, Raven SCS440 NVM control box, cab mount GPS Speed Puck, 3/4in Atom Jet Carbide tip NH3 knives, 1/4in NH3 lines, 600lbs trips, Moulson's tank hitch, s/nC60015054789
- (50) New Atom Jet carbide tip NH3 knives, 1/4in tube
- 2018 70ft Degelman Strawmaster 7000 heavy harrows, 3255 Valmar Granular applicator, light kit, 16.5L-16.1SL main frame rubber, Carbide tip tines (like new), Harrow s/nSM7317, Valmar s/n325516171
- 2018 26ft Wishek 862NT Tandem Disc, scraper kit, 385/65R22.5 big rubber (8 tires), front to back levelling kit, single point depth control, current disc size 29.5in, light kit, s/nAGCW0842THX464110, this disc has done very little work
- 2019 18ft Yanush 1850HD multi angle serrated PT blade, fully hyd, 23.1-26 flotation rubber (Diamond tread), Unit has seen very little use
- MW (Moulson's Welding) hyd rock hook, 12.5L-15F1 rubber, this unit has been used very little
- 40ft Moulson's Welding land roller, 42in diameter drums, water fillable, 280/70R15 rubber on main frame, 11L-15F1 rubber on wings
- Degelman ground drive rotary stone picker with clutch

## GRAIN HANDLING:

- 2018 Meridian TL10-39 auger, Super Edge flighting, reversible gear box, 2 electric clutch switches, Meridian self-mover, hyd lift winch, 30HP Vanguard ES eng, poly spout, light kit, s/n36-11723
- 2015 Batco 1545FL conveyor, self-mover kit, 27hp Kohler engine, poly flex spout, s/n159333,
- 2018 (Bought New in 2020) Farm King 13x70 pto swing hopper auger, DBL auger in hopper, electric hopper wheels with remote, electric lift winch in hopper with remote, reversible gear box, 540 PTO, Never Spill poly spout, s/nY137018000107
- 2012 Farm King 13x70 pto swing hopper auger, DBL auger in hopper, Never Spill spout, hyd drive wheels on hopper, hyd hopper winch, reversible gear box, 540 PTO, s/n219009842

## BINS:

- Bin#1, 4000 Bushel Meridian Grain Max hopper bottom bin, 5HP Grain Guard Aeration fan, lid opener, mounted ladder, 3 site glasses, on DBL skid, aeration rocket, Bin s/nNA, Fan s/n2113FC53495
- Bin#2, 4000 Bushel Meridian Grain Max hopper bottom bin, 5HP Grain Guard Aeration fan, lid opener, mounted ladder, 3 site glasses, on DBL skid, aeration rocket, roof vent, Bin s/n6220130341841Fan s/n201015146
- Bin#3, 4000 Bushel Meridian Grain Max hopper bottom bin, 5HP Grain Guard Aeration fan, lid opener, mounted ladder, 3 site glasses, on DBL skid, aeration rocket, Bin s/n6220120839225, Fan s/n2012FC53114

- Bin#4, 4000 Bushel Meridian Grain Max hopper bottom bin, 5HP Grain Guard Aeration fan, lid opener, mounted ladder, 3 site glasses, on DBL skid, aeration rocket, Bin s/n6220110233509Fan s/nF1104253864

- Bin#5, 4000 Bushel Meridian Grain Max hopper bottom bin, 5HP Grain Guard Aeration fan, lid opener, mounted ladder, roof vent, on single skid, aeration rocket, Bin s/n15141Fan s/n200515284

- Bin#6, 4000 Bushel Meridian Grain Max hopper bottom bin, 5HP Grain Guard Aeration fan, lid opener, mounted ladder, roof vent, on single skid, Aeration rocket, Bin s/n15143Fan s/n210915005

- Bin#7, 3000 Bushel Meridian Grain Max hopper bottom bin, 3HP Caldwell Aeration fan, lid opener, mounted ladder, on single skid, aeration rocket, full bin indicators, Bin s/n7170Fan s/n86G1706

- Bin#8, 3000 Bushel Meridian Grain Max hopper bottom bin, 3HP Grain Guard Aeration fan, lid opener, mounted ladder, on single skid, aeration rocket, full bin indicators, Bin s/n7543Fan s/n211020132

- Bin #9, Approx 2100 Bushel Westeel Roscoe on Pelloquin cone, DBL Skid, aeration trough, mounted ladder, lid opener, full bin indicator, 4hp Farms System aeration fan, Fan s/n252588

- Bin #10, Approx 2100 Bushel Westeel Roscoe on Pelloquin cone, DBL Skid, aeration trough, mounted ladder, lid opener, full bin indicator, 3HP Grain Guard Aeration fan, Fan s/n20131L20764

- Bin#11, Approx 1300 Bushel hopper bottom bin, single skid, mounted ladder, NO aeration, Epoxy coated

- 3000-bus Stor-King hopper bin, epoxy coated, on skid, removable aeration tube, 5hp aeration fan, 3 site glasses, full bin indicator

- 3000-bus Stor-King hopper bin, epoxy coated, on skid, removable aeration tube, 3hp Grain Guard aeration fan, 1 site glass, full bin indicator

## TANKS:

- Westeel Road-Vault 435 litre skid tank, 12-volt GPI pump and nozzle

- (2) 1350 US Gal black poly tank - 1 year old

Many more items are included in this sale. Info and pictures available at [www.fraserauction.com](http://www.fraserauction.com)

**RING 1 LIVE VIRTUAL ONLINE**  
**RING 2 TIMED ONLINE AUCTION**

See [www.fraserauction.com](http://www.fraserauction.com) for complete listing

## FRASER AUCTION SERVICE LTD.

Brandon, MB Auctioneer: Scott Campbell / Jesse Campbell

P: 204-727-2001 F: 204-729-9912 TF: 1-800-483-5856 E: [office@fraserauction.com](mailto:office@fraserauction.com) [www.fraserauction.com](http://www.fraserauction.com)

Licensed and bonded. P.L. License #918093. Member of M.A.A., S.A.A., A.A.A., A.A.C.

NOTE: Cheques of \$50,000 or more must be accompanied by bank letter of good standing. For more information on this please call Fraser Auction 204-727-2001

Not responsible for errors in description. Subject to additions and or deletions. Property owners and Fraser Auction Service not responsible for any accidents. GST & PST where applicable.

TERMS: Visa, MasterCard, Debit, Cash, E-Transfer, Bank Wire Transfer, or cheque. Sale conducted by FRASER AUCTION SERVICE 1-800-483-5856 [www.fraserauction.com](http://www.fraserauction.com)





# RETIREMENT FARM AUCTION FOR BRAD & CAROLINE THOMPSON

MINIOTA, MB. | FRIDAY, APRIL 21ST | 12:00 NOON

FOR MORE INFORMATION OR TO BOOK A VIEWING, CONTACT SELLER  
BRAD THOMPSON 204-851-2502 call or text or email: btca@mymts.net

**ONLINE ONLY PRE-BID LIVE VIRTUAL** [www.fraserauction.com](http://www.fraserauction.com)



**DIRECTIONS:** GPS 50.150484,-101.086373

From (Jct #83 & #467 hwy) South of Miniota, MB. in bottom of valley.

5.5kms west on #467 to Rd 158W, 0.9kms north on Rd 158W to Rd 78N, West on Rd 78N into yard (Lane #158016)





## TRACTORS:

- 2003 JD 7320 MFWA Tractor, 125hp, JD 741 self-levelling loader, 8ft bucket with grapple quick attach, joystick controls, 520/85R38 single rear rubber, 420/85R28 front rubber, dual PTO, 3PT, 3 remote hyd, 3PT controls on fender, Power Quad trans with shuttle, 9350hrs showing, s/nRW7320R001217
- 1989 JD 4455 2wd Tractor, 156hp, 520/85R38 rear duals, 10.00-16SL front rubber, dual hyd with return line, dual PTO, Quad range trans, 8400hrs showing, s/nRW4455H004669
- 1966 JD 4020 DSL Tractor, 101hp, JD 148 loader, 5ft material bucket, power shift trans, 2 remote hyd, dual PTO, loader hyd plumbed into aux hyd, 18.4-34 single rear rubber, 7.50-18 SL front rubber, 6197hrs showing, s/nSNT223P126099R

## HARVEST:

- 1990 JD 9500 Combine, JD 914 pick-up head, standard auger, Calmar poly spout, JD sieves, chaff spreader, standard chopper, LED light bar on cab, 4779 eng hrs showing, 3676 sep hrs showing, s/nH09500X635379
- 2000 Prairie Star 4950 Swather, 25ft MacDon 972 head, rubber slat canvas, pick-up reel, adjustable Bourgault rear mounted poly swath roller, 2-speed hydro, 2275 eng hrs showing, 1817 header hrs showing, s/n136259
- 2004 16ft MacDon 922 hay header, 1 new knife, s/n157472

## TRUCKS & TRAILERS:

- 1978 Chevy C60 S/A grain truck, 15ft Canade box and hoist, 350 gas engine, 4+2 trans, 9.00-20 rubber, plumbed drill fill, 5000lbs front, 15000lbs rear, 88606 showing, VIN#CCE618V168991
- 2012 Dodge Ram 3500 Laramie Mega Cab Truck, 4x4, Cummins DSL, auto trans, full length running boards, spray in box liner, 17in rubber, hitch rails in box, fully loaded - leather interior, sunroof, rear entertainment pkg, 4585kg GVW, farm ball and camper hitch, 189,507 showing, SAFETIED, VIN#3C63D3ML2CG218441
- 2014 24ft Wilson Ranch Hand T/A Aluminum

stock trailer, DBL partition gates, drive side man gate, ST235/85R16 rubber, SAFETIED, VIN#1W17242S7E5544607

- 24ft Bobco T/A flat deck gooseneck trailer, farm ball hitch, 16in rubber

## SEED & TILLAGE:

- 24ft Bourgault FH424-28 air seeder, Bourgault 2115 DBL compartment air cart, Bourgault knock on sweeps, 7.5in spacing, single chute, poly packers & 3-bar harrows, self loading auger, Cart s/n2358, Tillage s/n378-6
- 21ft Morris Magnum II CP 719 Chisel Plow, 3-bar mounted harrows, main lift cylinder rebuilt, s/n5233
- 23ft Wilrich Field Cultivator, 3 bar harrows
- 15ft Ezee-On tandem disc, smooth blades front/back, scraper kit
- 45ft Morris hyd Harrows
- Crown rotary ground drive rock picker, NO clutch, s/n1212

## SPRAYER:

- 100ft Brandt QF1000 PT Sprayer, hyd pump, 1000 US gal poly tank, chemical tank, freshwater wash tank, variable rate controls, Diamond Tread 16.5L-16.1SL main frame rubber, s/n43121A

## GRAIN HANDLING:

- 13x70 buhler/Farm King PTO swing hopper auger, DBL augers in hopper, poly flex spout, reversible gear box, 540 PTO, s/n21906329
- Sakundiak HD7-37 auger, 18HP B+S engine, s/n38046
- (2) 16ft x 4in Pencil augers with electric motors

## HAYING EQUIPMENT:

- 2016 JD 569 Mega Wide Plus Rd baler, 1000 PTO, twine tie and net wrap, 21.5L-16SL Titan rubber, 8597 bale count, always shedded, s/n1E00569XLGG428796
- JD 336 Sq baler, 540 PTO, 1/4 turn chute, always shedded, s/n013345E
- NH Stackliner 1033 sq bale picker, s/n3657
- Sovema WR-V-14H 14 wheel V-Rake, s/n95258

## LIVESTOCK:

- 1981 NH 519 s/a manure spreader, 540 PTO, single beater, single floor chain, new wooden floor, s/n547456
- Flexi Coil post pounder, trailer style, fully hyd, 540 PTO, post cradle
- Draper's Welding drum feeder on 2-wheel wagon, electric lift winch
- JD 750 Haymixer mix mill, power bale feed, selection of screens, 540 PTO, self-fill auger, self-contained hyd system, extra hammers - 3 good sides, mineral bi-pass hopper, always shedded, s/n002590N
- ArrowQuip Q-Catch 8500 Series squeeze chute, Q-Catch 500 Series headgate, Palp cage, (2)-9ft alleys with back-up stops, 5 section Bud-Flow crown tub, chin bar, only used approx 4 years
- (6) 10ft Cypress Industries metal feed trough
- 21ft 3 bale feeder
- (4) HaySaver HD Skirted Bale Ring feeder
- Ranchers Welding 1000-bushel Creep feeder on skid
- (2) 100-bushel Cypress Industries creep feeder on wheels with feed panel
- Poly mineral lick tank
- 24ft x 12ft steel calf shelter on skids
- Hi-Qual maternity pen, auto catch headgate
- 10ft 7 bar 1 1/4in panel
- (3) 11ft gate with HD overhead frame

## TANK:

- 1400 Imp gal poly water tank (white), black out tank, 2in valve

## ATTACHMENTS:

- Agromec 2 prong bale fork with JD 740 series quick attach loader mounts
- 2 Prong bale fork - Mounts JD 148 loader
- 9ft Leon front mount blade

See [www.fraserauction.com](http://www.fraserauction.com) for complete listing

## FRASER AUCTION SERVICE LTD.

Brandon, MB Auctioneer: Scott Campbell / Jesse Campbell

P: 204-727-2001 F: 204-729-9912 TF: 1-800-483-5856 E: [office@fraserauction.com](mailto:office@fraserauction.com) [www.fraserauction.com](http://www.fraserauction.com)

Licensed and bonded. P.L. License #918093. Member of M.A.A., S.A.A., A.A.A., A.A.C.

NOTE: Cheques of \$50,000 or more must be accompanied by bank letter of good standing. For more information on this please call Fraser Auction 204-727-2001

Not responsible for errors in description. Subject to additions and or deletions. Property owners and Fraser Auction Service not responsible for any accidents. GST & PST where applicable.

TERMS: Visa, MasterCard, Debit, Cash, E-Transfer, Bank Wire Transfer, or cheque. Sale conducted by FRASER AUCTION SERVICE 1-800-483-5856 [www.fraserauction.com](http://www.fraserauction.com)





# RETIREMENT FARM AUCTION FOR **WARREN & KATHY BROOKS** HAMIOTA, MB. | MONDAY, APRIL 24TH | 12:00 NOON

FOR MORE INFORMATION OR TO BOOK A VIEWING, CONTACT SELLER  
WARREN & KATHY BROOKS 204-764-0829 call or text or email: brooks03@mymts.net

**ONLINE ONLY PRE-BID LIVE VIRTUAL** [www.fraserauction.com](http://www.fraserauction.com)



**DIRECTIONS:** GPS 50.199528,-100.572761

**From: Hamiota, MB. (Jct #21 & #467 hwy's)** 1.7kms north on #21 hwy to Rd 81, 2kms east on Rd 81 to Lane #135135 north side

**From: Shoal Lake, MB. (Jct #16 & #21 hwy's)** South on #21 hwy to Rd 81, 2kms east on Rd 81 to Lane #135135 north side





## **TRACTORS:**

- 1998 NH 9482 4WD tractor, 310hp, 4 remote hyd with return, 20.8R42 duals - approx 80%, standard transmission, steering bushings and pivot pins redone, new clutch, alternator, air condition compressor all within last 2 seasons, Fresh engine oil & filter, approx 250hrs since engine bottom end redone, 6195hrs showing, s/nD107099
- 1994 JD 7700 2WD tractor, 150hp, Factory 3pt, dual PTO, 2 remote hyd, 18.4-38 duals (approx 75-80%), 11.00-16-4 rib on front, front weight pkg (8 weight plates @ 47kg each), Power Quad trans, 8554hrs showing, Fresh engine oil & filter, s/nRW7700H005750

## **HARVEST:**

- 2004 JD 9660STS combine, JD 914 pick up header, long auger, fine cut chopper, 800/65R32 drive rubber, 18.4-26 rear rubber, JD Brown box monitor, 2508sep hrs showing, 3421eng hrs showing, s/nH09660S706191, JD Green Lighted every year up until 2021@ Enns (Brandon)
- 1993 30ft JD 930 Straight cut header, pick-up reel, single point hook-up, light kit, s/nH00930P651900
- 1990 JD 2360 swather, 25ft header, pick-up reel, pea auger, rubber slat canvas, single knife drive, 18.4-16 drive rubber, 2102hrs showing, approx 30hrs on fresh engine oil & filter, s/nE02360A878115
- 8ft poly swath roller

## **TRUCK & TRAILERS:**

- 1981 Chevrolet 70 s/a grain truck, 15ft Box, roll tarp, 10.00-20 tires, 366 gas engine, 5+2 trans, frame mount toolbox, 9000lbs fronts, 17000lbs rear, 131,908 showing, SAFETIED, VIN#1GBJ7D1BxBV111592
- 1975 Dodge 500 s/a grain truck, 14ft B+H, Sherlock roll tarp, 9.00-20 rubber, 318 gas engine, 5 spd trans, new clutch, New water pump, brakes redone, rads has been replaced with a DBL core rad, engine has had upgraded heads, 47,942 showing, SAFETIED, VIN#D51EG5J010096

## **SPRAYERS:**

- 1997 Rogator 854 SP sprayer, 100ft booms, 800-gal S/S tank, aux fresh water tank 6166hrs showing, Raven spray control, 270/95R48 in-crop rubber, 23.1-26 flotation rubber, fresh oil and filter prior to sale, s/n8521877, (consigned by neighbor call Neil for info 204-764-0028)
- 65ft Bourgault 540 Eliminator PT sprayer, 650gal poly tank, hyd pump, 2-way nozzle bodies, s/nS2280

## **SEED & TILLAGE:**

- 40ft Bourgault 8800 air seeder, Bourgault 2155 air cart, 8in spacing, 3/4in carbide tip knives, single chute, poly packers - quick attach, Bourgault harrows - quick attach, cart is 2 compartment w/cameras, self loading auger, Tillage s/n820752, Cart s/n4023
- 40ft Bourgault WTP coil packer bar, P20 coils, s/nWP1170
- 1991 41ft CaselH 8100 tillage, 4-bar mounted harrows, Raven Super Cooler NH3 kit (variable rate control system), Green Drop liquid Fertilizer kit (fixed rate), set up dual chute down the shank, knock-on spoons, HD shop-built tank hitch (pulled NH3 tank & Liquid caddy), s/nDJG0001557
- 33ft Morris Magnum II CP-731 chisel plow, 3-bar Flexi-coil harrows, bolt on sweeps, adjustable hitch, s/n3020
- 1993 15ft JD 630 tandem disc, notched blades-front, smooth blades-back, scraper kit, s/n010012
- 70ft Laurier hyd harrow bar
- 56ft Laurier hyd harrow bar, like new tines
- Leon rotary stone picker, hyd drive

## **GRAIN HANDLING:**

- 2019 Brandt 1070HP pto swing hopper auger, poly flex spout, DBL augers in hopper, hyd lift winch on hopper, 540 PTO, reversible gear box, unit has seen very little use, s/n131157
- Wheatheart BH851 auger, self-mover kit, 35HP B+S Vanguard (engine is only approx 2 years old), Wheatheart bin sweep, hyd lift winch
- Sakundiak HD 7x41 auger, 16HP B+S ES engine, oil tank and pump for bin sweep, s/n38256
- Sakundiak HD7-1200 auger, Kawasaki engine, s/n48409
- Walinga MT510 Corn & Grain Vac, 1000 PTO, like new hose kit, s/nMT510F-840520261HSX

## **FANS & HEATER:**

- Meridian 3hp aeration fan with Grain Guard electric supplemental heater, 240-volt 1ph supplemental heater (model 914-7500), Fan s/nS3B-0312-000027, Heater s/n900203
- Flaman Fans 3hp aeration fan with Grain Guard electric supplemental heater, 240-volt 1ph Gain Guard model 914-7500 supplemental heater, Fan s/n2019FCW02053, Heater s/n900653
- Caldwell 3hp aeration fan with Caldwell propane supplemental heater
- Westeel 3hp aeration fan, s/nWVA-18-3-1
- Indal Metals 3hp aeration fan
- Caldwell 1.5hp aeration fan
- Caldwell propane fired supplemental heater

## **TANKS:**

- 400lb propane tank, like new, only been filled twice
- Skid tank with Fill-Rite 13GPM 12-volt pump
- Westeel 1000-gal fuel tank, Fill-Rite 20 GPM 115-volt pump, single wall, 3-year-old tank, s/n67-20-02188

**See [www.fraserauction.com](http://www.fraserauction.com) for complete listing**

## **FRASER AUCTION SERVICE LTD.**

**Brandon, MB Auctioneer: Scott Campbell / Jesse Campbell**

**P: 204-727-2001 F: 204-729-9912 TF: 1-800-483-5856 E: [office@fraserauction.com](mailto:office@fraserauction.com) [www.fraserauction.com](http://www.fraserauction.com)**

**Licensed and bonded. P.L. License #918093. Member of M.A.A., S.A.A., A.A.A., A.A.C.**

**NOTE: Cheques of \$50,000 or more must be accompanied by bank letter of good standing. For more information on this please call Fraser Auction 204-727-2001**

**Not responsible for errors in description. Subject to additions and or deletions. Property owners and Fraser Auction Service not responsible for any accidents. GST & PST where applicable.**

**TERMS: Visa, MasterCard, Debit, Cash, E-Transfer, Bank Wire Transfer, or cheque. Sale conducted by FRASER AUCTION SERVICE 1-800-483-5856 [www.fraserauction.com](http://www.fraserauction.com)**





# RETIREMENT FARM AUCTION FOR KEN FINGAS

INGLIS, MB. | TUESDAY, APRIL 25TH | 12:00 NOON

FOR MORE INFORMATION OR TO BOOK A VIEWING, CONTACT SELLER  
KEN FINGAS 204-773-0137 call or text or email: kenfingas@gmail.com

ONLINE ONLY PRE-BID LIVE VIRTUAL [www.fraserauction.com](http://www.fraserauction.com)



**1**  
RING



**DIRECTIONS:** GPS 50.978865,-101.164642

**From:** Jct #83 & #366 hwy's (Signs for Inglis, MB.)

8.5kms east on #366 to Rd 134N, 1.6kms east on Rd 134N to Rd 158W, 100 yards north on Rd 158W to sale site.

**2**  
RING





## TRACTORS:

- 1997 JD 9300 4WD tractor, 360hp, Agri DSL Service Performance module, 4 remote hyd with return, Firestone 710/70R38 duals, front, and rear wheel weight pkg, 12 suitcase weights on back, 24 speed std trans, JD Universal Auto Trac steering wheel, original Greenstar display (Brown box), Starfire 3000 receiver, injector cups - done, new water pump, new batteries, Always Shedded, 4702hrs showing, s/nRW930H001524
- 1982 Versatile 835 4WD tractor, 230hp, 4 remote hyd, Atom Jet aux hyd system, Goodyear 18.4-38 rubber, new batteries in 2021, 8875hrs showing, s/n035916
- 1985 JD 4650 tractor, 160hp, Quad shift trans, West Lake 20.8-38 rear duals, Firestone 16.5-16.1 front rubber, 3 remote hyd with return, 1000 PTO, front weight kit - 6 suitcase weights, new batteries in 2021, always shedded, 7437hrs showing, s/nRW4650H011818
- Trimble NH FM750 Monitor, EZ-Steer motor, Terrain compensator EZ-Steer, Trimble AG25 GNSS Dome, foot switch, power and antenna cable, Dome s/nMAP5051274, Compensator s/n5109519667

## HARVEST:

- 1998 JD 9610 Maximizer sp combine, JD 914 pick-up header, fine cut chopper, hopper topper, 30.5-32 Firestone drive rubber, 16.9-26 Firestone rear rubber, Greenlighted in 2021 by JD Certified mechanic at Hillcrest Acres Russell, MB, always shedded, 4209 eng hrs showing, 2936 sep hrs showing, header s/nH00914W672144, combine s/nH09610X678093
- 1996 30ft JD 930R Rigid header, pick up reel, almost new knife, transport, s/nH00930R667170
- 1993 Westward 9000 swather, 25ft MacDon 960 header, pick-up reel, DBL swath, 2 speed Hydro, 3176hrs showing, Swather s/n83350, header s/n89672
- 8ft poly swath roller
- Labtronics LT 919 moisture tester with scale, re-calibrated in 2021

## TRUCKS:

- 2007 IH Eagle 9400i t/a grain truck, 19ft Cancaide box, roll tarp, 435hp Cummins ISX, Eaton Fuller Auto Shift trans with clutch, 12000lbs fronts, 40000lbs rears, Michelin 11R22.5 rubber, aluminum rims, power windows, 2019 new water pump, new air bags in last 5 years, always shedded, 986,674 showing, SAFETIED, VIN#2HSCNAPR67C400308

## SPRAYER:

- 2004 Flexi-Coil 67XL sprayer, 110ft booms, spray curtain, 1250-lmp gal tank (1500 US gal), 5 and 10 gal nozzles, rinse tank, Raven sectional control with 6 valves (was using with a Trimble FM 750 but NOT included), sells with original auto rate controller and monitor, s/nS67XL-113529

- Trimble sprayer control rate and section controls module, master switch box, power cable

## SEED & TILLAGE:

- 1997 36ft Bourgault 8810 tillage, 8in spacing, heavy trips, poly packers - quick change, 4bar harrows (quick change), Bourgault 200 Series Speed-Loc adapters, 3/4in Bourgault knock-on openers, single shoot, 2.5in hoses new in 2021, newer type secondary manifolds and towers (5 years ago), new rubber on main frame 2022, s/n824425
- 2010 Bourgault 6350 air cart, Titan 28L-26 rear rubber, Titan 21.5L-16.1 front rubber, triple metering, duals fans, light kit, 591 monitor, always shedded, set up as single shoot, but can be DBL shoot, s/n39919AS-17
- Bourgault 8810 stub extensions with shanks and assemblies, to extend unit from 36ft to 40ft
- 35ft Flexi-Coil 820 tillage, 12in spacing, 4-bar harrows, Bourgault 410 Series Speed-Loc adapter, 4in Bourgault sweeps-knock on, NH3 kit, Micro Trak rate controller, HD Homemade hitch, need NH3 knives to apply NH3 the way it's set up, s/nC820B00-R065419
- 50ft Delmar 5500M Mid harrow, 7/16in tines, current tine length 15in-17in, s/n5550219
- Leon rotary stone picker, s/n20-760316
- Crop lifter - Homemade
- 4in Bourgault knock-on sweeps (200 series)
- 2in Bourgault knock-on spoon (200 series)
- 2in Bourgault knock-on spoon (200 series) approx 65%
- Bourgault 3/4in knock-on carbide tip NH3 knife (200 series)
- Bourgault 3/4in knock-on carbide tip NH3 knife (410 series)
- 14in Bourgault knock-on sweep (410 series)

## GRAIN HANDLING:

- Westfield MK100-61 pto swing hopper auger, mechanical drive swing auger
- Sakundiak HD8-1200 (8x39) auger, Linamar 18HP engine, s/n59242
- Wheatheart bin sweep
- 12x4 Allied pencil auger with 1/3hp electric motor
- 12x4 Farm Crest pencil auger (no motor)

## MISC EQUIPMENT:

- 2011 1000-gal Westeel fuel tank, Fill-Rite HD Model FR311V 115-volt pump, Fill-Rite meter, long hose, s/n671104315
- Kendon gravity box on 4-wheel wagon
- Peerless F20 P4 20in roller mill, s/n1173540
- Poly West Hander II 2in chemical mix system

- Diamond tank for drill fill, has rusted through in a couple of spots along bottom - small holes
- (6) Bourgault harrow arms, not quick attach
- Granular air kit with 27 drops, off 36ft Bourgault 8810
- Bourgault air seeder air kit, hitch, 87 seed boots, secondary manifolds (11 port) plus towers, primary manifolds (8 port) plus tower, metal piping 6in, hyd lines, wiring harness, 2.5in heavy fertilizer hose (2@25ft, 2@12ft, 2@9ft)
- Westfield tailgate drill fill
- Poly auger hopper with 8in flighting, partially seized
- Poly auger hopper
- Used Goodyear 11L-15FI imp tire
- New Goodyear 11L-15SL imp tire
- Used Goodyear Dyna Rib 16.5L-16.1 tractor tire-8 ply
- Used Goodyear 9.00-20 tire on rim
- Lockhart Industries Classic Seed Treater (auger mount)
- Bourgault knock-on tools
- Pallet of hyd hose with ends, (2) approx 25ft hyd hose 1/2in, (3) approx 20ft hyd hose 1/2in
- John Blue NH3 hyd shut off, with approx 60ft of hose (1/4 and 1/2)
- Pallet of air seeder & NH3 hose, New white hose for air seeder 1in (part roll-approx 35ft), New black hose, 1/2in (approx 40ft), New white hose, 1/2in (approx 25ft)
- JD single point hook-up (header end)
- PTO drive sprayer pump
- JD std chopper rotor, knives are good - new on one side, comes with pulley, belt bearing
- 10ft panel
- 8ft panel gate (white)
- 7ft 10in panel gate
- 16ft panel gate
- iCom VHF radios, 2 antennas, iC-F5010 Series, (Tested at Ronald Communications 1 works and 1 is for parts)

Many more items are included in this sale. Info and pictures available at [www.fraserauction.com](http://www.fraserauction.com)

**RING 1 LIVE VIRTUAL ONLINE**  
**RING 2 TIMED ONLINE AUCTION**

See [www.fraserauction.com](http://www.fraserauction.com) for complete listing

## FRASER AUCTION SERVICE LTD.

Brandon, MB Auctioneer: Scott Campbell / Jesse Campbell

P: 204-727-2001 F: 204-729-9912 TF: 1-800-483-5856 E: [office@fraserauction.com](mailto:office@fraserauction.com) [www.fraserauction.com](http://www.fraserauction.com)

Licensed and bonded. P.L. License #918093. Member of M.A.A., S.A.A., A.A.A., A.A.C.

NOTE: Cheques of \$50,000 or more must be accompanied by bank letter of good standing. For more information on this please call Fraser Auction 204-727-2001

Not responsible for errors in description. Subject to additions and or deletions. Property owners and Fraser Auction Service not responsible for any accidents. GST & PST where applicable.

TERMS: Visa, MasterCard, Debit, Cash, E-Transfer, Bank Wire Transfer, or cheque. Sale conducted by FRASER AUCTION SERVICE 1-800-483-5856 [www.fraserauction.com](http://www.fraserauction.com)





# FARM AUCTION FOR KENDALL CROPS INC.

STONY MOUNTAIN, MB. | WEDNESDAY, APRIL 26TH | 12:00 NOON

FOR MORE INFORMATION OR TO BOOK A VIEWING, CONTACT SELLER  
DOUG KENDALL 204-771-3766 call or text or email: 7720titan@gmail.com

ONLINE ONLY PRE-BID LIVE VIRTUAL [www.fraserauction.com](http://www.fraserauction.com)



RING 1



**DIRECTIONS:** GPS 50.067663, -97.114603

517 Fulsher Road (Stony Mountain, MB.)

**From: Winnipeg, MB. (North Perimeter & #8 hwy's)** 5.4kms north on #8 hwy to PR321 (sign for Stony Mountain), 3.1kms west on PR321 to Fulsher Road (MB Highways Yard), 2kms north on Fulsher Road to sale

**From: St. Andrews, MB. (Jct #8 & #27 hwy's)** 2.7kms south on #8 hwy to PR321 (sign for Stony Mountain), 3.1kms west on PR321 to Fulsher Road (MB Highways Yard), 2kms north on Fulsher Road to sale





## TRACTORS:

- 1980 Steiger ST310 Panther III Tractor, 310hp, (pump turned up to 340hp), 20spd transmission, 4 factory remote hyd, Atom jet kit hyd, hyd return, Outback e-Drive auto steer system, Outback S2 monitor, transmission has been rebuilt, 600hrs on rebuilt engine, 0 hrs on clutch, 23.1/34 duals, 2 season on 4 inner tires, s/n106-01077

## HARVEST:

- 1994 JD 9600 Combine, JD 914 pickup header, Crary Big Top hopper extension, long auger, Airfoil sieves, fine cut chopper, Firestone 30.5L-32 drive rubber, 14.9-24 rear rubber (1 season old), 3647sep hrs, 5279eng hrs, s/nH09600X655785
- 1986 JD 7720 Titan II combine, JD 212 pickup header, long auger, Airfoil sieves, standard chopper, Goodyear 24.5-32 drive rubber, 11.2-24 rear rubber, 4986hrs showing, s/nH07720X616213
- 1992 NH TR 96 Combine, NH 971 head with Melroe 388 pickup, TR98 updates to feeder house, fine cut chopper, 30.5L-32 drive rubber (Firestone Spade Grip), 14.9-24 rear rubber, Terrain Tracer, Outback guidance system, 2910sep hrs showing, 4007eng hrs showing, s/n553736
- 1988 NH TR96 Combine, NH 971 head with Swath Master pickup, standard chopper, Goodyear 30.5L-32 drive rubber, 14.9-24 rear rubber, 0417sep hrs, 2313eng hrs, s/n528519
- Mandako MTMO-2-36 grain cart, approx. 600-bushel cap, bottom dump, sells with bottom unload conveyor, new roll tarp, 23.1-30 rubber, s/n00C153
- 2000 30ft JD 930F flex header, poly dividers, pickup reel with ducks feet, fore/aft, full finger auger, s/nH00930F686530
- 1997 30ft JD 930 flex header, poly dividers, pickup reel with ducks feet, fore/aft, s/nH00930F671946,
- 1991 25ft JD 925 flex header, steel dividers, pick up reel, fore/aft, s/nH00925F640956
- 1986 24ft NH 971 header, bat reel, s/n508422
- 1995 25ft NH 971 header, bat reel, s/n582060
- 24ft JD 224 header, bat reel, s/nH0224RP612018
- 1999 NH 996 8-row corn header, poly dividers, s/n620562
- JD 8-row corn header, steel dividers, s/n240572
- 1988 NH 971 head with Swath Master pickup, s/n531069

- 1997 30ft JD 930 rigid header (PARTS ONLY), pickup reel, s/nH00930R667272
- Arc-Fab ESB30 s/a header transport, with flex head bar, s/n11312
- NH to JD Throat adapter, TR96 - TR 97 - TR98 models
- NH to JD throat adapters, TR96 - TR97 - TR98 models
- Air-Foil sieve for JD 7720 Titan II combine
- Poly sieve for JD 7720 Titan II combine
- Goodyear 24.5-32 Super Grip rubber on JD combine rims, really good shape 80-90% rubber

## TRUCK & TRAILERS:

- 2002 45ft Timpco Super Hopper Aluminum hopper bottom grain trailer, tarp in good condition
- 2008 Ford F-250 King Ranch truck, V8 power stroke dsl, auto trans, 4-door, 4x4, 5th wheel rails in box, spray box liner, King Ranch pkg fully loaded leather interior, front and back console, 4 passenger, 20in rubber, 189,216 showing, VIN#1FTSW21R18EC06006
- 2004 28.5ft Jayco Jay Flight RLS 5th wheel Camper, tandem axle, single slide, front queen bed, table makes into bed, couch pulls out into bed, sleeps 6, fridge, stove, microwave, TV, VIN#1UJCJ02P541E30338

## CRAWLER & GRADER:

- IH TD9 crawler, 10ft Blade, 18in tracks, rear hitch, bush canopy, 540 PTO
- IH TD9 crawler, 10ft blade, 16in tracks, rear hitch, bush canopy, s/nTDCB49841
- 10ft dozer mount root rake, fits on TD9's
- Champion D-600 road grader, 14ft mow board, Cummins N855 engine (not running/needs engine), s/n74-600-462-6938

## SEED & TILLAGE:

- 40ft JD 9350 hoe press drills, rubber over steel press wheels, factory transport
- 26ft IH 645 Vibra Chisel, s/n1292
- Melroe RR 6-bottom plow, 20in sheers, s/nRRF703
- 3/4inch Bourgault carbide top seed boot 600-tip-750 (bolt-on)

## SPRAYERS:

- Willmar 765 Special Edition Sprayer, 90ft booms, 600-gal poly tank, 60gal nurse tank, 4-way nozzle bodies, sells with set of 9.5-42 in crop rubber, set of 18.4-38 floatation rubber on rims, set of 4 crop dividers, 5 section boom control, Outback e-Drive guidance, Mid-Tech ARC-6000 rate controller, Mid-Tech boom controls, 4822hrs showing, 700 acres on new King pins, 2 rear power wheel-replaced
- Power Wheel for Willmar 765
- 90ft Summers Ultimate NT sprayer, 100ft booms, 3-way nozzle body, 1500-gallon poly tank, 200-gallon poly nurse tank, poly chem induction tank, hyd pump, Goodyear 480/80R38 tires, Raven spray control, high clearance with hyd booms, s/nC0161

## GRAIN HANDLING:

- Walinga 510 grain vac, 1000 PTO, new rubber hose, s/nMT510G-8507247HSX
- Westfield 8x61 PTO swing hopper auger, single auger in the hopper, 540 PTO, hyd drive on the swing auger
- Westfield 7x41 auger, B+S motor, s/n10447
- Westfield 7x41 auger, B+S motor
- REM 1026 Grain Vac, 8in hose, 1000 pto

## ATTACHMENTS:

- 10ft Leon 3100A 3pt 5-way hyd blade, s/n983706
- 3pt 2-prong bale fork
- 46in X 7in HD pallet fork, flat back attach
- 42in X 7in HD pallet fork, flat back attach

## MISC:

- Tow hitch
- Bourgault rear hitch for Bourgault air cart
- 8ft slide in service body toolbox
- New 92in Michel's roll tarp end cap

Many more items are included in this sale. Info and pictures available at [www.fraserauction.com](http://www.fraserauction.com)

**RING 1 LIVE VIRTUAL ONLINE  
RING 2 TIMED ONLINE AUCTION**

See [www.fraserauction.com](http://www.fraserauction.com) for complete listing

## FRASER AUCTION SERVICE LTD.

Brandon, MB Auctioneer: Scott Campbell / Jesse Campbell

P: 204-727-2001 F: 204-729-9912 TF: 1-800-483-5856 E: [office@fraserauction.com](mailto:office@fraserauction.com) [www.fraserauction.com](http://www.fraserauction.com)

Licensed and bonded. P.L. License #918093. Member of M.A.A., S.A.A., A.A.A., A.A.C.

NOTE: Cheques of \$50,000 or more must be accompanied by bank letter of good standing. For more information on this please call Fraser Auction 204-727-2001

Not responsible for errors in description. Subject to additions and or deletions. Property owners and Fraser Auction Service not responsible for any accidents. GST & PST where applicable.

TERMS: Visa, MasterCard, Debit, Cash, E-Transfer, Bank Wire Transfer, or cheque. Sale conducted by FRASER AUCTION SERVICE 1-800-483-5856 [www.fraserauction.com](http://www.fraserauction.com)





**ONLINE TIMED ONLY**  
[www.fraserauction.com](http://www.fraserauction.com)

# APIARIST DOWNSIZING TIMED ONLINE BEE AUCTION SWEETHEART POLLINATORS/JANEIL ENTERPRISES

NEIL & JANINE SPECHT

EATONIA, SK | WEDNESDAY, MAY 8TH | 12:00 NOON SK TIME

Bidding will open May 1st and all lots will close May 8th starting at 12:00 Noon SK time.

**TIMED ONLINE ONLY BIDDING** [www.fraserauction.com](http://www.fraserauction.com)



**OPEN  
HOUSE  
MAY 5-6**

AT SALE LOCATION

*Come and inspect all  
the bees and items  
in the auction.*



- APPROX 2000 DBL BROOD COLONIES
- APPROX 6000 9-FRAME HONEY SUPERS

- 2010 Chevrolet 3500HD s/a dually truck w/11.5ft flat deck, SK-SAFETIED, VIN# 1GB6K0B61AF110788
- 2008 Freightliner t/a truck w/24ft flat deck, SK-SAFETIED, VIN# 1FVHCYBS58HA86900
- 2008 Dodge 5500HD s/a dually truck w/15ft flat deck, SK-SAFETIED, VIN# 3D6WD76A08G118624

- 2007 Freightliner t/a truck w/22ft flat deck, SK-SAFETIED, VIN# 1FVHCYDJ37HX51413
- 2007 IH t/a truck w/bunk, 24ft 22ft flat deck, SK-SAFETIED, VIN# 1HTWNAZR77J470858
- (2) HUMMERBEE articulating Rough Terrain forklifts
- Hive clamp that mounts to Hummerbee forklift

**More to be added. Updated list will be available at [www.fraserauction.com](http://www.fraserauction.com)**



## FRASER AUCTION SERVICE LTD.

Brandon, MB Auctioneer: Scott Campbell / Jesse Campbell

P: 204-727-2001 F: 204-729-9912 TF: 1-800-483-5856

E: [office@fraserauction.com](mailto:office@fraserauction.com) [www.fraserauction.com](http://www.fraserauction.com)

Licensed and bonded. P.L. License #918093. Member of M.A.A., S.A.A., A.A.A., A.A.C.



**NOTE: Cheques of \$50,000 or more must be accompanied by bank letter of good standing. For more information on this please call Fraser Auction 204-727-2001**

Not responsible for errors in description. Subject to additions and or deletions. Property owners and Fraser Auction Service not responsible for any accidents. GST & PST where applicable.

TERMS: Visa, MasterCard, Debit, Cash, E-Transfer, Bank Wire Transfer, or cheque. Sale conducted by FRASER AUCTION SERVICE 1-800-483-5856 [www.fraserauction.com](http://www.fraserauction.com)





**ONLINE ONLY**  
www.fraserauction.com

## RETIREMENT FARM AUCTION FOR **ALBERT HOLOPINA**

**INGLIS, MB. | WEDNESDAY, JUNE 7TH | 12:00 NOON**

FOR MORE INFORMATION OR TO BOOK A VIEWING, CONTACT SELLER  
ALBERT HOLOPINA 204-937-0093 (call or text), 204-564-2211 (house) or email: albert.holopina@gmail.com

**ONLINE ONLY PRE-BID LIVE VIRTUAL** www.fraserauction.com



**NOTE:** A complete listing with pictures is available for this sale  
on our website. www.fraserauction.com



**See www.fraserauction.com for complete listing**

### **FRASER AUCTION SERVICE LTD.**

Brandon, MB Auctioneer: Scott Campbell / Jesse Campbell

P: 204-727-2001 F: 204-729-9912 TF: 1-800-483-5856 E: office@fraserauction.com www.fraserauction.com

Licensed and bonded. P.L. License #918093. Member of M.A.A., S.A.A., A.A.A., A.A.C.

**NOTE:** Cheques of \$50,000 or more must be accompanied by bank letter of good standing. For more information on this please call Fraser Auction 204-727-2001  
Not responsible for errors in description. Subject to additions and or deletions. Property owners and Fraser Auction Service not responsible for any accidents. GST & PST where applicable.  
TERMS: Visa, MasterCard, Debit, Cash, E-Transfer, Bank Wire Transfer, or cheque. Sale conducted by FRASER AUCTION SERVICE 1-800-483-5856 www.fraserauction.com





**ONLINE TIMED ONLY**  
[www.fraserauction.com](http://www.fraserauction.com)

ANNUAL PRE-HAYING TIMED ONLINE CONSIGNMENT SALE

## FRASER AUCTION YARD

BRANDON, MB. | SATURDAY, JUNE 10TH | 12:00 NOON

BIDDING OPENS JUNE 5TH & LOTS START TO CLOSE AT 10:00AM JUNE 10TH

FOR MORE INFORMATION OR TO CONSIGN, CONTACT:

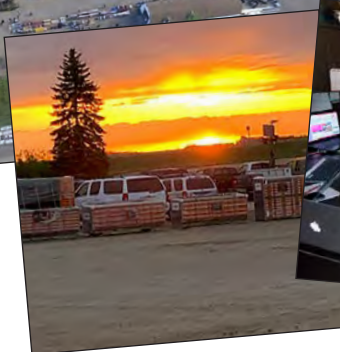
Fraser Auction Service 204-727-2001 or email: [office@fraserauction.com](mailto:office@fraserauction.com)

**TIMED ONLINE ONLY BIDDING** [www.fraserauction.com](http://www.fraserauction.com)



And on the eighth day God looked down at his creation  
and said, I need someone to be there when my people need them  
**someone who will get up early and stay up late**  
someone who can be a counselor, photographer, event coordinator,  
**truck driver, mover, writer, storyteller, visionary.**  
Someone who can conduct business in a tailored suit or a cowboy hat and boots.  
Someone who can sell cars, or cows on Tuesday and Grandma's Estate on Saturday.  
**Someone who can recycle old memories one at a time.**  
**Someone who will be HONEST AND FAIR TO ALL.**  
*So God Made an **AUCTIONEER***

**CONSIGN  
NOW!**



We see a **HUGE** selection of lawn and garden, ATVs, trucks, trailers, industrial and farm equipment. Our consignment sales are a place second to none to market your equipment, and or look for that particular piece to add to your own equipment line up. Whether you are a buyer or a seller at Fraser Auction we take your business very seriously. We thank you for choosing Fraser Auction Service Ltd. as your auctioneers.

**Daily updates available at [www.fraserauction.com](http://www.fraserauction.com)**



**BIDDING AT [www.fraserauction.com](http://www.fraserauction.com)**

### FRASER AUCTION SERVICE LTD.

Brandon, MB Auctioneer: Scott Campbell / Jesse Campbell

P: 204-727-2001 F: 204-729-9912 TF: 1-800-483-5856 E: [office@fraserauction.com](mailto:office@fraserauction.com) [www.fraserauction.com](http://www.fraserauction.com)

Licensed and bonded. P.L. License #918093. Member of M.A.A., S.A.A., A.A.A., A.A.C.

NOTE: Cheques of \$50,000 or more must be accompanied by bank letter of good standing. For more information on this please call Fraser Auction 204-727-2001

Not responsible for errors in description. Subject to additions and or deletions. Property owners and Fraser Auction Service not responsible for any accidents. GST & PST where applicable.

TERMS: Visa, MasterCard, Debit, Cash, E-Transfer, Bank Wire Transfer, or cheque. Sale conducted by FRASER AUCTION SERVICE 1-800-483-5856 [www.fraserauction.com](http://www.fraserauction.com)





**ONLINE ONLY**  
www.fraserauction.com

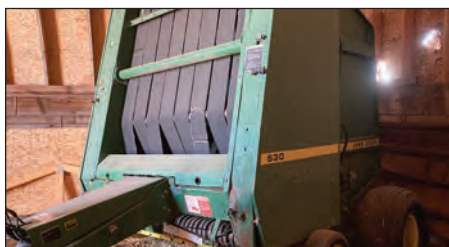
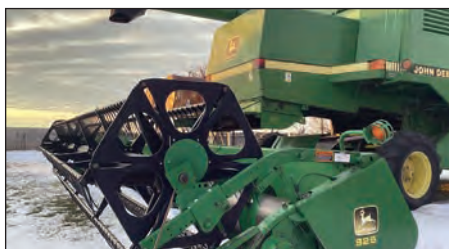
# RETIREMENT FARM AUCTION FOR **BARRY & JOY ROE** MOOSOMIN, SK. | FRIDAY, JUNE 16TH | 12:00 NOON

FOR MORE INFORMATION OR TO BOOK A VIEWING, CONTACT SELLERS  
Barry & Joy Roe 306-435-9468 (call or text) or email: roebar918@gmail.com

**ONLINE ONLY PRE-BID LIVE VIRTUAL** www.fraserauction.com



**NOTE:** This sale was just booked at the time of printing this catalogue.  
A more detailed list and more items will be available on our website soon [www.fraserauction.com](http://www.fraserauction.com)



**See [www.fraserauction.com](http://www.fraserauction.com) for complete listing**

## **FRASER AUCTION SERVICE LTD.**

Brandon, MB Auctioneer: Scott Campbell / Jesse Campbell

P: 204-727-2001 F: 204-729-9912 TF: 1-800-483-5856 E: [office@fraserauction.com](mailto:office@fraserauction.com) [www.fraserauction.com](http://www.fraserauction.com)  
Licensed and bonded. P.L. License #918093. Member of M.A.A., S.A.A., A.A.A., A.A.C.

Many more items are included in  
this sale. Info and pictures available at  
[www.fraserauction.com](http://www.fraserauction.com)

**RING 1 LIVE VIRTUAL ONLINE  
RING 2 TIMED ONLINE AUCTION**

**NOTE:** Cheques of \$50,000 or more must be accompanied by bank letter of good standing. For more information on this please call Fraser Auction 204-727-2001  
Not responsible for errors in description. Subject to additions and or deletions. Property owners and Fraser Auction Service not responsible for any accidents. GST & PST where applicable.  
TERMS: Visa, MasterCard, Debit, Cash, E-Transfer, Bank Wire Transfer, or cheque. Sale conducted by FRASER AUCTION SERVICE 1-800-483-5856 [www.fraserauction.com](http://www.fraserauction.com)





## Flexibility makes it easier

Protect your Farm with Guild Insurance Group and Wawanesa Insurance



BRANDON | CARBERRY | SHILO | GLENBORO | BALDUR  
HOLLAND | WAWANESA | VIRDEN | KENTON

PROUD PARTNER OF



Visit [guild.ca/agricultural-insurance](http://guild.ca/agricultural-insurance)  
Call 1-866-277-4949



# COUNTRY

880AM 91.5FM

QCOUNTRYFM.CA



GARTH BROOKS

SHANIA TWAIN

TIM MCGRAW





**ONLINE ONLY**  
www.fraserauction.com

# RETIREMENT FARM AUCTION FOR **K.D. SPARROW FARMS LTD.** FAIRFAX, MB. | MONDAY, JUNE 19TH | 12:00 NOON

FOR MORE INFORMATION OR TO BOOK A VIEWING, CONTACT SELLER  
Kevin Sparrow 204-534-8401 (call or text) or email: kevin\_sparrow2124@live.ca

**ONLINE ONLY PRE-BID LIVE VIRTUAL** [www.fraserauction.com](http://www.fraserauction.com)



**1**  
RING



**NOTE:** This sale was just booked at the time of printing this catalogue.  
A more detailed list and more items will be available on our website soon  
[www.fraserauction.com](http://www.fraserauction.com)

**2**  
RING



**See [www.fraserauction.com](http://www.fraserauction.com) for complete listing**

## **FRASER AUCTION SERVICE LTD.**

Brandon, MB Auctioneer: Scott Campbell / Jesse Campbell  
P: 204-727-2001 F: 204-729-9912 TF: 1-800-483-5856 E: [office@fraserauction.com](mailto:office@fraserauction.com) [www.fraserauction.com](http://www.fraserauction.com)  
Licensed and bonded. P.L. License #918093. Member of M.A.A., S.A.A., A.A.A., A.A.C.

Many more items are included in  
this sale. Info and pictures available at  
[www.fraserauction.com](http://www.fraserauction.com)

**RING 1 LIVE VIRTUAL ONLINE**  
**RING 2 TIMED ONLINE AUCTION**

NOTE: Cheques of \$50,000 or more must be accompanied by bank letter of good standing. For more information on this please call Fraser Auction 204-727-2001  
Not responsible for errors in description. Subject to additions and or deletions. Property owners and Fraser Auction Service not responsible for any accidents. GST & PST where applicable.  
TERMS: Visa, MasterCard, Debit, Cash, E-Transfer, Bank Wire Transfer, or cheque. Sale conducted by FRASER AUCTION SERVICE 1-800-483-5856 [www.fraserauction.com](http://www.fraserauction.com)





# RETIREMENT FARM AUCTION FOR GLENELG FARMS LTD. GREG & MARSHALL MCLEOD

MACDONALD, MB. | TUESDAY, JUNE 20TH | 12:00 NOON

FOR MORE INFORMATION OR TO BOOK A VIEWING, CONTACT SELLERS

204-856-6674 Greg (Call or text) or 204-857-2588 Marshall (Call) or email: glenelg121@gmail.com

**ONLINE ONLY PRE-BID LIVE VIRTUAL** [www.fraserauction.com](http://www.fraserauction.com)



**1**  
RING



**DIRECTIONS: GPS 50.121744, -98.479782**

**From: (Jct #1 hwy & #16 hwy)** 11.2kms north on #16 hwy to RD 45W (1/2 mile east of Pioneer Terminal), 5.5kms north on RD 45W to RD 76N, 0.8kms east on RD 76N to sale site, south side

**From: (Westbourne, MB.)** 9.2kms east on #16 hwy to RD 45W (1/2 mile east of Pioneer Terminal), 5.5kms north on RD 45W to RD 76N, 0.8kms east on RD 76N to sale site, south side

**2**  
RING





## TRACTORS:

- 2012 CaseIH 450 AFS Quad Trac, 450hp, 4 remote hyd with return line, Goodyear Trackman 30in tracks, Powershift trans with Shuttle, fully hyd integrated auto steer, CaseIH 262 Dome with unlocks for HP & XP, AFS Pro 700 Monitor, Deluxe cab, high capacity hyd pump, 305 low pressure motor return, high cap alternator, always shedded, 2712hrs showing, s/nZCF129881
- 2005 New Holland TJ 375 4WD Tractor, 375hp, 4 remote hyd with return line, 710/70R42 Firestone duals, rear weight pkg, Powershift trans with Shuttle, hyd Integrated auto steer, Trimble Dome, NH FM 750 monitor, always shedded, 4805hrs showing, s/nRV5004070
- 1979 JD 4440 2WD tractor, 162hp, 2 remote hyd, Factory 3pt, dual pto, 420/80R46 inside rubber (on unit), Outside rubber - 20.8-38 on rims (sells with it), 11.00-16 front rubber, Quad range trans, always shedded, 7983hrs showing, s/n021920R, (loader brackets seen in pictures are NOT INCLUDED)
- 1977 IH 1086 2WD tractor, 146hp, 2 remote hyd, Factory 3pt, dual pto, Firestone 18.4-38 rear singles, 10.00-16SL 4-rib fronts, 4 spd Hi/Lo trans with TA, always shedded, 6397hrs showing, s/nU22595
- IH 2350 front end loader, 7ft smooth edge material bucket, quick attach loader, brackets are for JD 4440 (retro fit them to anything else), sells with brackets

## HARVEST:

- 2011 JD 9770 STS bullet rotor combine, JD 915P header, Michaels Crop Catcher, 900/65R32CFO front rubber with hub extensions, 600/65R28 rear rubber, JD hopper ext, Heavy rail update on sieves and chaffer, Easy oil drain line on rotor gear box, Perforated feeder house, Fine wire concaves in machine, also sells with wide wire concaves, Fine cut chopper, 2 spd, Agra-GPS ITC Extend for JD StarFire ITC guidance bridge, JD brown box display, JD command centre, 1984eng hrs showing, 1336sep hrs showing, always shedded, s/n742740, This combine was through a complete JD Service Guard Inspection in November, 2022
- 2014 35ft JD 635F HydraFlex header, Horst 4-wheel header transport - rear wheel steering, pickup reel, poly dividers, full finger auger, single point hook-up, fore/aft, always shedded, s/n765604
- JD 200 series platform head, 14ft Sund pick-up, perforated bottom, adapted to single point hook-up for newer 70 series combine, s/n276175H
- J&M 750 grain cart, roll tarp, light kit, PTO unload, 16in unload auger with hyd deflector chute, Firestone 30.5L32 rubber, s/n5595
- 2011 MF Hesston 9220 sp swather, 25ft 5200 Series header, pickup reel, rear hitch, roto-sheers both ends, reel fore/aft, header tilt, Topcon GPS System (auto steer, steering wheel, GPS monitor), always shedded, 551hrs showing, s/nAGCM92200BHS01147
- 2011 MF Hesston 9220 sp swather, 25ft 5200 Series header, DBL swath attachment, UII pickup reel, rear hitch, roto-sheers, reel fore/aft, header tilt, Topcon GPS System (auto steer, steering wheel, GPS monitor), always shedded, 788hrs showing, s/nAGCM92200BHS01144
- 10ft buhler/FarmKing metal swath roller, always shedded, s/n23601289
- 10ft buhler/FarmKing metal swath roller, always shedded, s/n23600949
- 4-wheel swather transport, drive on drive off ramps, always shedded

## TRUCKS & TRAILERS:

- 2009 Mack Pinnacle t/a highway truck, day cab, Mack MP8-485C engine 485hp, 13spd Eaton Fuller transmission, full rear aluminum fenders, 11R22.5 rubber, 664,098kms showing, VIN#1M1AW07Y39N006616, SAFETIED

- 1993 Mack CH613 t/a highway truck, day cab, wet kit, Mack E7 400hp eng, 13spd Eaton Fuller transmission, 25,300hrs showing, 593,440kms odometer on dash, 690,175kms auxiliary odometer, VIN#1M2AA14Y2PW025797, SAFETIED
- 1985 Mack R688ST Econodyne t/a highway truck, day cab, 11R22.5 rubber, aluminum rear fenders over drives, Maxitorque T2100 10-speed trans, Mack E6 350HP DSL engine, always shedded, 630,040kms showing, VIN#2M2N187Y8FC012116, SAFETIED
- 1980 GMC 7000 tandem axle grain truck, 18ft Midland box and hoist, roll tarp, V8 gas engine, 5+2 Eaton trans, 10.00-20 drive rubber, 11.00-20 steering rubber, always shedded, 85,699kms showing, VIN#T47DEAV590317, SAFETIED
- 2008 Load-King Prestige 36ft t/a hopper bottom grain trailer, dbl hoppers, roll tarp, air ride, air gauges, 11R22.5 rubber, VIN#2LDHG36289F048679, SAFETIED
- 1990 Lode-King 34ft t/a hopper bottom grain trailer, Michel's hyd hopper augers, roll tarp, dbl hopper, spring ride, 11R24.5 rubber, VIN#2L9DT3427LW004882, SAFETIED
- 25ft Trailmobile t/a highboy flat deck trailer, (3) 1250-gal poly tanks, 2in Handler III Chemical mix system, 4HP Honda 2in water pump, always shedded
- T/A converter dolly, Floating hitch, 10.00-20 rubber, Spring ride, Farm use only NO TOD

## SEED & TILLAGE:

- 2006 39ft NH SD440A air seeder, 2003 NH SC230 dual compartment air cart, 10in spacing, 3 1/2in rubber over steel packers, set of single row heavy harrows, 3/4in knives, single chute, (dual chute capable), front tank has camera, dual fan, has manifolds to put back to dual chute as well, S/S Plenum updates, S/S metering tubes, sells with FINE - EXTRA FINE - COURSE - EXTRA COURSE metering rolls, light kit, self loading auger, Cart has done approx 24,000 acres, Drill s/nY5S003347, Cart s/nPNL009064
- 70ft Degelman 7000 Straw Master heavy harrow, 1/2in tine, s/n1346
- 72ft Summers Harrow, light kit, 1/2in tines, s/nL1659
- 50ft Flexi-Coil System 95 harrow packer bar, P20 coils, s/nN052612
- 25ft Summers Diamond Disc Series 10, 3-bar Summers harrows and shank on centre, 26in discs, scraper kit, light kit, s/n0452
- 40ft JD 2410 tillage, single point depth, bolt on beaver tails, 3-bar medium duty harrows, s/n1N02410XHD0752722
- 40ft Bourgault 8810 tillage, knock on sweeps, 3-bar harrows, tank hitch, s/n824536
- 31ft CaseIH 5800 tillage, 3-bar mounted harrows, bolt on beaver tails with 1 new turn yet, adjustable hitch, s/nGAG0622482
- 35ft CaseIH 5600 chisel plow, tank hitch, NH3 kit continental, adjustable hitch, bolt on beaver tails, 3-bar Summers HD harrows, hyd shut off valve on NH3, s/n0190000002047
- Green Drop Band Wagon 1500 liquid fertilizer caddy, John Blue ground drive fertilizer pump, 2in Pacer hyd drive fill pump, 395/85R20XZL rubber
- JD 7100 3pt planter, 8 row, 36in spacing, disc markers, sells with corn & edible bean cups, s/n039402A
- Lock Wood 4500 potato harvester, comes with blower, good chains, electric/hyd controlled, always shedded
- Harriston 8-row 36in bean cutter, knife style, tractor front mount with wings
- 3pt V-Ditch plow
- 12ft Cockshutt 246 tillage, 2-bar harrows
- Cat 70 curved bowl hyd scraper, fully hyd, curve bowl style, hyd push off, approx 14yd capacity, rear rubber 18.00R25, front rubber 17.5-25

## SPRAYER:

- 100ft Hardi Navigator NV4000 high clearance pt sprayer, 1200 US gal poly tank, on board freshwater tank with pressure washer nozzle, 3-way nozzles, 330/90R46 high clearance rubber, pto pump, foam marker kit, 6-section boom controls, spray monitor, 2in fill plumbing, chemical mix cone tank, rate controller, gauge wheels on booms, always shedded, s/n40-0414
- 120ft Summers PT sprayer, 1000-gal poly tank, Goodyear 16.5L-16.1 Diamond Tread main frame rubber, s/nT0567
- Sotera Chem pump with digital meter, always stored in heated shop

## GRAIN HANDLING:

- Turb-O-Vac Super Deluxe 990 grain vac, single fold auger, 1000 PTO, comes with hose and clean up nozzle, s/n742740
- Westfield MK 130-81 Plus pto swing hopper auger, hyd mover wheels on hopper, dbl augers in hopper, Never Spill poly spout, 540 PTO, never seen fertilizer, always shedded, s/n215832
- Westfield MKX 13-74 pto swing hopper auger, electric mover wheels on the hopper, DBL augers in hopper, 540 PTO with reversible gear box, poly flex spout, LED light package, never seen fertilizer, always shedded, s/nWF02A062027822
- Westfield MK100-51 pto swing hopper auger, single auger in hopper, 540 pto, always shedded, s/n57845
- Sakundiak HD8-1400 auger, Hawes Agro 2-wheel self-mover, hyd mover, poly flex spout, 25HP Kohler Command Pro engine, hyd lift winch, electric clutch switch, never seen fertilizer, always shedded, s/n60447
- Sakundiak HD7-45 auger, Kohler ES engine, never seen fertilizer, always shedded, s/n23202
- Sakundiak 7x37 auger, 5hp electric motor, never seen fertilizer
- Convey-All 65ft x 12in pto drive conveyor, hyd lift winch, never seen fertilizer, always shedded, s/nCW267903565
- Convey-All 13ft x 12in transfer conveyor, 4HP Honda eng, never seen fertilizer, always shedded
- Westfield 13ft x 10in hyd transfer auger, hyd drive, wheel kit, never seen fertilizer, s/n25969W
- Farm Fans AB-12B grain dryer, propane fired, 1PH powered, sells with wet auger with 5hp elec. motor, NO wheel kit, brand new 15hp fan motor in it (used very few hours in fall of 2022), 2618 showing, (used to dry 40 acres of corn fall 2022) cycle counter 1112, s/n9-2069

## BINS:

- Friesen 1500-bus hopper bin, on legs, painted approx 2 seasons ago, lid opener, mounted ladder, (was used as a wet bin at dryer)
- Friesen 1200-bus hopper bin, on legs, lid opener, mounted ladder, painted 2 seasons ago, (was used as a dry bin at dryer)

Many more items are included in this sale. Info and pictures available at [www.fraserauction.com](http://www.fraserauction.com)

**RING 1 LIVE VIRTUAL ONLINE**  
**RING 2 TIMED ONLINE AUCTION**

See [www.fraserauction.com](http://www.fraserauction.com) for complete listing

**FRASER AUCTION SERVICE LTD.**

Brandon, MB Auctioneer: Scott Campbell / Jesse Campbell

P: 204-727-2001 F: 204-729-9912 TF: 1-800-483-5856 E: [office@fraserauction.com](mailto:office@fraserauction.com) [www.fraserauction.com](http://www.fraserauction.com)

Licensed and bonded. P.L. License #918093. Member of M.A.A., S.A.A., A.A.A., A.A.C.

NOTE: Cheques of \$50,000 or more must be accompanied by bank letter of good standing. For more information on this please call Fraser Auction 204-727-2001

Not responsible for errors in description. Subject to additions and or deletions. Property owners and Fraser Auction Service not responsible for any accidents. GST & PST where applicable.

TERMS: Visa, MasterCard, Debit, Cash, E-Transfer, Bank Wire Transfer, or cheque. Sale conducted by FRASER AUCTION SERVICE 1-800-483-5856 [www.fraserauction.com](http://www.fraserauction.com)





**ONLINE ONLY**  
www.fraserauction.com

**RETIREMENT FARM AUCTION FOR**  
**BILL & SHIRLEY STADNYK**  
CARBERRY, MB. | WEDNESDAY, JUNE 21ST | 12:00 NOON  
FOR MORE INFORMATION OR TO BOOK A VIEWING, CONTACT SELLER  
BILL & SHIRLEY STADNYK 204-841-1408 (call or text) or 204-834-2020 (home)  
or email: stadnykw2@gmail.com

**ONLINE ONLY PRE-BID LIVE VIRTUAL** www.fraserauction.com



**NOTE:** A complete listing with pictures is available for this sale  
on our website. www.fraserauction.com



**See www.fraserauction.com for complete listing**

**FRASER AUCTION SERVICE LTD.**

Brandon, MB Auctioneer: Scott Campbell / Jesse Campbell

P: 204-727-2001 F: 204-729-9912 TF: 1-800-483-5856 E: office@fraserauction.com www.fraserauction.com

Licensed and bonded. P.L. License #918093. Member of M.A.A., S.A.A., A.A.A., A.A.C.

Many more items are included in  
this sale. Info and pictures available at  
www.fraserauction.com

**RING 1 LIVE VIRTUAL ONLINE**  
**RING 2 TIMED ONLINE AUCTION**

**NOTE:** Cheques of \$50,000 or more must be accompanied by bank letter of good standing. For more information on this please call Fraser Auction 204-727-2001  
Not responsible for errors in description. Subject to additions and or deletions. Property owners and Fraser Auction Service not responsible for any accidents. GST & PST where applicable.  
TERMS: Visa, MasterCard, Debit, Cash, E-Transfer, Bank Wire Transfer, or cheque. Sale conducted by FRASER AUCTION SERVICE 1-800-483-5856 www.fraserauction.com





**ONLINE ONLY**  
www.fraserauction.com

## FARM AUCTION FOR PORT-LAND FARMS LTD.

HARTLEY & DARRYL VANSTONE

PORTAGE LA PRAIRIE, MB. | THURSDAY, JUNE 22ND | 12:00 NOON

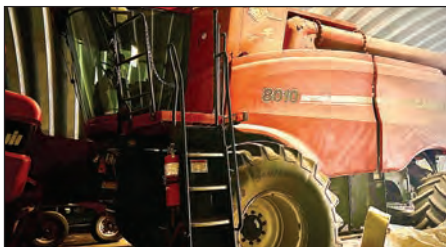
FOR MORE INFORMATION OR TO BOOK A VIEWING, CONTACT SELLERS  
Hartley 204-871-0419 (Call or Text) hartleyvanstone@hotmail.com or  
Darryl 204-871-0915 (Call or Text) port-landfarms@hotmail.com

**ONLINE ONLY PRE-BID LIVE VIRTUAL** www.fraserauction.com



**NOTE:** This sale was just booked at the time of printing this catalogue.

A more detailed list and more items will be available on our website soon [www.fraserauction.com](http://www.fraserauction.com)



See [www.fraserauction.com](http://www.fraserauction.com) for complete listing

### FRASER AUCTION SERVICE LTD.

Brandon, MB Auctioneer: Scott Campbell / Jesse Campbell

P: 204-727-2001 F: 204-729-9912 TF: 1-800-483-5856 E: [office@fraserauction.com](mailto:office@fraserauction.com) [www.fraserauction.com](http://www.fraserauction.com)  
Licensed and bonded. P.L. License #918093. Member of M.A.A., S.A.A., A.A.A., A.A.C.

Many more items are included in  
this sale. Info and pictures available at  
[www.fraserauction.com](http://www.fraserauction.com)

**RING 1 LIVE VIRTUAL ONLINE  
RING 2 TIMED ONLINE AUCTION**

**NOTE:** Cheques of \$50,000 or more must be accompanied by bank letter of good standing. For more information on this please call Fraser Auction 204-727-2001  
Not responsible for errors in description. Subject to additions and or deletions. Property owners and Fraser Auction Service not responsible for any accidents. GST & PST where applicable.  
TERMS: Visa, MasterCard, Debit, Cash, E-Transfer, Bank Wire Transfer, or cheque. Sale conducted by FRASER AUCTION SERVICE 1-800-483-5856 [www.fraserauction.com](http://www.fraserauction.com)





**SOLD**



# SCOTT CAMPBELL

I am very active in the  
farming and rural communities.

With my connection to the Ag sector and rural areas and my everyday  
communications with producers on several fronts of Ag marketing,  
"Who can you think of better to sell your farm land or rural property"?



**DON'T JUST LIST IT - LETS GET IT SOLD!**

**204-724-2131**

**[scottc@royalpage.ca](mailto:scottc@royalpage.ca)**





**ONLINE ONLY**  
www.fraserauction.com

## RETIREMENT AUCTION FOR CAM MANSER

**VIRDEN, MB. | WEDNESDAY, OCTOBER 4TH | 12:00 NOON**

FOR MORE INFORMATION OR TO BOOK A VIEWING, CONTACT SELLER'S AGENT  
Torrie Carter 204-748-7966 (Call or Text)

**ONLINE ONLY** www.fraserauction.com



**NOTE:** This sale was just booked at the time of printing this catalogue.  
A more detailed list and more items will be available on our website soon [www.fraserauction.com](http://www.fraserauction.com)



**See [www.fraserauction.com](http://www.fraserauction.com) for complete listing**

### **FRASER AUCTION SERVICE LTD.**

Brandon, MB Auctioneer: Scott Campbell / Jesse Campbell

P: 204-727-2001 F: 204-729-9912 TF: 1-800-483-5856 E: [office@fraserauction.com](mailto:office@fraserauction.com) [www.fraserauction.com](http://www.fraserauction.com)

Licensed and bonded. P.L. License #918093. Member of M.A.A., S.A.A., A.A.A., A.A.C.

**NOTE:** Cheques of \$50,000 or more must be accompanied by bank letter of good standing. For more information on this please call Fraser Auction 204-727-2001  
Not responsible for errors in description. Subject to additions and or deletions. Property owners and Fraser Auction Service not responsible for any accidents. GST & PST where applicable.  
TERMS: Visa, MasterCard, Debit, Cash, E-Transfer, Bank Wire Transfer, or cheque. Sale conducted by FRASER AUCTION SERVICE 1-800-483-5856 [www.fraserauction.com](http://www.fraserauction.com)





## With smart planning,

you can accommodate family legal situations, creditor proof your assets and minimize your farm's and your family's total tax payable during your

lifetime and at death. Estate planning requires an investment of your time and some money, but the return on your investment may be huge. Of the 193,492 farms counted in 2018, only 16,200, or just over eight per cent, reported having a succession plan according to Statistics Canada.

### Planning ahead will help you:

- Reduce taxes paid
- Assist with property or land sales
- Avoid OAS claw backs
- Use OAS and CPP incomes strategically

### Branstone Financial Strategies Inc.

Private Wealth Management  
Quadrus Investment Services Ltd.  
Kevin Martin CEA, Kristie Miller B.Admin, CEA,  
& Amber Storey

4A - 457 - 9th Street  
Brandon, Manitoba R7A 1K2

**Telephone: 204-578-5500**

**[info@branstone.ca](mailto:info@branstone.ca) | [www.branstone.ca](http://www.branstone.ca)**



**BRANSTONE**  
FINANCIAL STRATEGIES



**TRULY LOCALLY OWNED  
AND OPERATED**

# **FULL TILT**

**TOWING & TRANSPORT LTD**  
**24 HOUR SERVICE**



**FOR ALL YOUR TOWING  
AND TRANSPORT NEEDS!**

**LITE, MEDIUM &  
HEAVY DUTY  
TOWING & RECOVERY**



Agricultural  
Construction

Moving  
Forestry

Oil Field  
Road Side Assistance

Boosting/Lock Out  
Services

**24 Hour Service**

**204-725-6055**

**[dispatch@fulltilttowing.ca](mailto:dispatch@fulltilttowing.ca)**





## *Who is Fraser Auction Service Ltd?*

Fraser Auction Service Ltd is family owned & operated by Scott & Lori Campbell, along with their sons Jesse & Kade. We are family owned, family operated just like your farm. We pride ourselves in working personally with you on your sale from start to finish, developing friendships lasting far beyond the auction.

We strive to provide our buyers and sellers with an enjoyable auction experience, whether you are a regular auction bidder or a first timer who could use a little help getting comfortable with the bidding process. With all the new online sales and the fast-changing auction world, we strive to stay at the head of the industry with updated websites and bidding platforms second to none. Have a question? Just ask, we are here to help.

We pride ourselves in providing personal, professional, bidder engaged auctions, while developing relationships with both buyers and sellers. Your success is our success!

Our award-winning team ensures you an exciting auction event. Even in modern times of the convenient Online Only auctions you will still be bidding to the chant of the auctioneers via Live Virtual auctions broadcast on our

website where you bid with confidence from the comforts of your office, home, or your tractor cab. If you are unable to be online while the sale is on Lori or Gail will be happy to have you on the phone where you can bid with them in real time. A true exciting auction experience.

### *Some of our Auctioneers' accomplishments:*

**Scott Campbell** (2x Past President of Manitoba Auctioneers Association)

2000 Portage Exhibition Champion Auctioneer  
2010 Canadian Livestock Rookie Champion Auctioneer  
2011 Canadian Young Farmers Champion Auctioneer  
2013 Yorkton Exhibition Champion Auctioneer  
2013 Man/Sask Livestock Champion Auctioneer

**Jesse Campbell** (Past President of Manitoba Auctioneers Association)

2018 Alberta Vern Scown Memorial Champion Auctioneer  
2019 Man/Sask Livestock Rookie Champion Auctioneer  
2020 Canadian All Round Auction Championships 3rd Place finish  
2022 Canadian Livestock Rookie Champion Auctioneer

## *We Truly love what we do!!!*

### **Why use Fraser Auction Service Ltd?**

- We have conducted thousands of auction sales throughout the prairies.
- Full-service auction company.
- 12-acre sales yard just north of the City of Brandon, MB where we hold huge multi consignor equipment and vehicle auctions 3 times yearly in June – August – October.
- State of the art modern Online bidding platform utilizing Live Virtual Pre-Bid, Hybrid & Timed Auction events. Not sure which style of auction is right for your sale? We are here to help. We can explain the many different benefits of all styles of auctions.

- Our bidder database is substantial, with specialized advertising programs featuring modern Email & Digital marketing options alongside more tradition print advertising like our catalogue, farm & trade publications, and more. Our website receives thousands of visitors every month from potential buyers where they can view updates, details, videos, and photos at the tip of their fingers 24 hours a day. Our extensive email list also keeps buyers informed with up to date information on our auctions. Buyers can also follow us on Facebook, Twitter, YouTube, and Instagram for even more up to the minute information.


## *Our Reputation - Is your Guarantee!*


Phone: 204-727-2001 or 1-800-483-5856


Fax: 204-729-9912


Email: [office@fraserauction.com](mailto:office@fraserauction.com)

**[www.fraserauction.com](http://www.fraserauction.com)**

 Fraser Auction Service Ltd.

 @fraserauction

 Fraser Auction

 fraserauction

# **NOW BOOKING 2024 AUCTION SALES!**

Contact us to be in our next Spring Auction Catalogue.

To see more sales, more information, and start bidding visit [www.fraserauction.com](http://www.fraserauction.com)