



2022 SALE CATALOGUE

www.fraserauction.com





- Celebrating 55 Years of Service!
- Heavy Truck & Trailer Repair Facility
 - Body Repair
 - Refinishing
 - Sandblasting
- Member of the Manitoba Commercial Vehicle Repair Association
- 62 1/2' Down Draft Bake Cycle Spray Booth
- Secured Compound
- 35' Down Draft Bake Cycle Spray Booth
- Two 60' Heavy Frame Straighteners
- Spring & Suspension Repair
- 60' Computerized Lazer Alignment Machine
- MPI Accredited
- Armaguard Spray-on Box Liners
 - Truck Box
 - Wheel Wells
 - Rocker Panels



Morgan Motors Co. Ltd.

30 Klondike Road, Brandon Manitoba
 TF: 1.877.725.0756
 204.725.0755

E: morganmotors@mymts.net
morgancollision.ca



*Our reputation is
Your guarantee...*

SCOTT CAMPBELL

I am very active in the
farming and rural communities.

With my connection to the Ag sector and rural
areas and my everyday communications with
producers on several fronts of Ag marketing,
"Who can you think of better to sell your farm
land or rural property"?



DON'T JUST LIST IT - LETS GET IT SOLD!

204-724-2131

scottc@royalpage.ca

WHAT'S COMING UP!

MARCH 15TH	GARY MOMOTIUK BEE SALE	2
APRIL 3RD	KILLARNEY CONSIGNMENT	4-5
APRIL 11TH	FLYNN FARMS	6-7
APRIL 12TH	FRANK STEVENS	8-9
APRIL 13TH	HJ SHAW FARMS LTD.	10-11
APRIL 14TH	ABCD FARMS LTD.	12-13
APRIL 19TH	TWO FAMILY FARM AUCTION FRED & DEBBIE DUNN & STEWART CATTLE CO.	14-17
APRIL 20TH	GREG & WANDA RABE	20-21
APRIL 25TH	DON & KOLLEEN MITCHELL	22-23
APRIL 26TH	BRAD & BRENDA ROBIN	24-25
APRIL 27TH	SUNDANCE VALLEY RANCH	26-27
APRIL 28TH	ESTATE OF JIM KUNKA	28-29
MAY 26TH	10TH ANNUAL MANITOBA TIMED BEE AUCTION	30
JUNE 11TH	FRASER AUCTION CONSIGNMENT	31



GARY MOMOTIUK

ONLINE BEE AUCTION

DAUPHIN, MB.

LOTS START TO CLOSE | TUESDAY, MARCH 15TH | 12:00PM

For more information or to schedule viewing of equipment contact seller:

Gary Momotiuk 204-647-6511 (call or text)

ONLINE TIMED ONLY
www.fraserauction.com



ONLINE TIMED ONLY www.fraserauction.com



This will be a sale of beekeeping equipment, extraction line, and trucks.

This sale will NOT include the live hives. Gary's LIVE HIVES will be sold at our Annual Live Bee auction in May 2022. Watch website closer to spring for more information about Annual Live Bee sale.

- Approx 4000 Honey Supers (9-frame standard box)(mostly wax with approx 1000 frames of plastic mixed in randomly)
- Dakota Guinness Uncapper
- Cook & Beals Extractor (Model 128 - s/n67) Parametrics (Paratrol S) DC motor speed control
- Cook & Beals Honey wax separator
- Cook & Beals Heat Exchanger
- Moyno 2" Honey Pump
- Moyno 2" Honey Pump
- Approx 500-gal honey tank with honey gate valve
- Approx 500-gal honey tank with honey gate valve
- 2008 Ford F350 Lariat 4x4, 4 door Crew Cab Power Stroke Dsl (Deleted) Bully Dog Programmer auto trans dually CM flat deck recessed trailer ball 216,399 showing 4294 hours showing VIN# 1FTWW33R88ED59504SAFETIED



COUNTRY

880AM 91.5FM

QCOUNTRYFM.CA



ONLINE BIDDING

At Fraser Auction Service Ltd. we want to make bidding on the items you want Easy and Enjoyable!

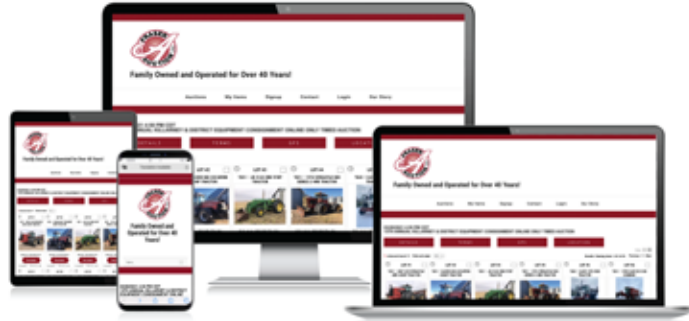
RING #1 - ONLINE ONLY PRE-BID LIVE VIRTUAL AUCTION LOTS

RING #2 - ONLINE ONLY TIMED AUCTION LOTS

www.fraserauction.com



***BIDDING HAS NEVER
BEEN SO EASY...
ON ANY DEVICE!***

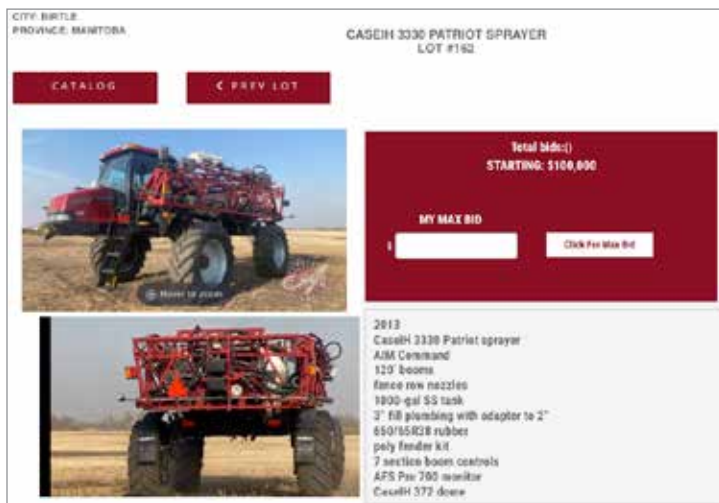


**More Features - Watchlists - Online Payments
- Absentee Bid - Pre Bid - Max Bid - Raised Bid**

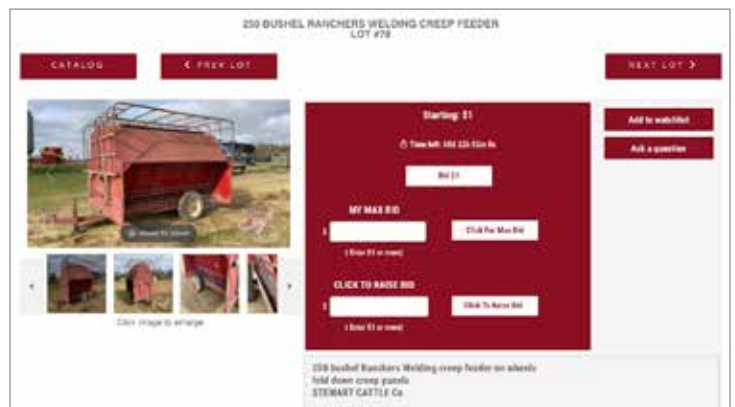
If you have bought online with us before, all you need to do is enter your email address and your password.

Don't wait until sale time - create your account today at www.fraserauction.com

PRE-BID LIVE VIRTUAL OR RING #1 AUCTION FORMATS



TIMED OR RING #2 AUCTION FORMATS



SALE DAY TURNS LIVE VIRTUAL

Our Pre-Bid Live Virtual Ring #1 will begin to broadcast live from our **Fraser Auction Service Studio** on sale days. You will then be bidding to the chant of our live auctioneer.

Note: Live sale bids open at the bid amount of the Pre-Bid.





14TH ANNUAL KILLARNEY ONLINE CONSIGNMENT AUCTION KILLARNEY, MB.

LOTS START TO CLOSE | SUNDAY, APRIL 3RD | 12:00PM

For more information or to schedule viewing of equipment contact :
Del & Gert Smith 204-534-7783

ONLINE TIMED ONLY www.fraserauction.com



DIRECTIONS:

Sale will be held at the farm of Del & Gert Smith

½ Mile West of the Jct of #3 & #18 Hwys. (Just off #3 across from water tower) Killarney, MB. (Canada)

No loadout or payments accepted on Sunday, April 3rd. On site payments accepted April 4th & 5th from 9:00 – 5:00PM



- JD LA 165 Riding Lawn Mower with 48 inch deck, new battery, 204 hrs showing
- P10 Lawn Trailer, s/n 08057611
- 2007 Ford Freestar Sport Passenger Van, 6 cyl, 4.2 engine, mileage doesn't show, VIN# 2FMAZ57297BA06344
- 1927 Model T Ford-4 door Sedan, wire spool wheels, two speed rear end, hood in tact, lights-OK, motor all there, wood body, starter inside, gas tank in hood, body needs work
- 2015 Peterbilt 579 t/a grain truck w/2020 20'x68" Loadline B+H, 500hp Cummins ISX15 engine (drop in at 750,000kms done at Cummins in Winnipeg), 18 spd trans, 3-way lockers, Espar heater, trailer ready with pintle hitch, air & electric at rear, 907,000 showing, SAFETIED
- 1980 Midland Pup Trailer, 18 ft Long, 8 ft Wide, 10.00-20 tires, roll tarp, box end dump, air works, (NO safety) VIN# AB0050919
- Homemade Utility Trailer with ramps, 2-5000 lb axles, s/n Homemade
- 2000 20 ft Duncan Cattle Trailer, VIN# 2D9UJA5BYR060707
- 19 ft x 6ft ramp, 32" load height, Brand new heavy duty loading ramp
- 8.5 ft Service Body With fuel tank (no pump) Mounted crane Vise
- Dolly for semi trailer
- Fort Garry Industries Ltd headache rack, magnum
- Electric/Hydraulic powerpack 110
- Cement Mixer on an anhydrous wagon, black liner sprayed on inside, used for inoculating seed
- Eversman 6 yard scraper, s/n 1320
- Versatile 555 Tractor, 1000 PTO, 5 hyd, standard trans, 18.4-38 tires and duals, (60-65% inside and 50-55% outside) Cummins engine V8, 1010 engine hrs showing, air heat, s/n 131493
- 1942 John Deere A Tractor, electric start, 12.4-38 rear tires
- 25ft Hesston pull type swather 1200 series, pick up reel, s/n 50126
- 2 wheel Rigid Shop Built Header transport up to 30 ft head
- Moisture Meter Grain Tester, Model 919 with book and triple beam balance (700 series 2610g) (800 series 5lbs 2 oz), s/n 85019
- 30 ft Case 810 Header, batt reel, no knife, s/n 1480139U0600860
- Case 1680 Combine with 1015 header, chaff spreader, axial flow, 30.5L-32 R-1 drive tires, 14.9-24 rear tires, 4823 hrs showing, s/n 02834187
- 2004 Case 8010 SP Combine with pick up header Model 2016, Redekop straw chopper, rebuilt rotor and concaves at approx 1900 hrs, rebuilt transmission at approx 2000 hrs, Cray Big Top hopper extension, unload auger has the extender on it, rear wheel assist, front traction tires 900/60R32 Firestone Radial all traction 23, rear tires 750/60R26 Radial tubeless Michelin, tilt on the pick-up, New batteries 2022, 3453 engine hrs showing, 2312 threshing hrs showing, s/n HAJ106059
- 35ft Case IH 2020 auger flex head with advanced air reel, tandem axle transport, brakes on transport s/n 202035N76
- 2 feeder houses for Case Combine - PARTS ONLY for AFX series
- JD 535 round baler, bale kicker, monitor, s/n E00535X990476
- 14 ft NH 1475 Haybine, new orbit motor, new knife, rubber rollers, s/n 594813
- NH Model 15 4-wheel farm wagon
- Chem Handler tank
- 26 ft IH Deep Tiller with 2 row harrows and a hitch
- 100 ft Summers light harrow, pressure springs on harrows, s/n W0082
- 41 ft Flexi-coil 800 Air Seeder with Flexi-coil 2340 cart, 2 compartment with hydraulic loading auger, hydraulic fan, 12 inch spacing, 4 row Flexi-coil harrows, single drop Dutch knock on, drill s/n C800.C00-M046744, s/n 2340-120235-03
- 52 ft Bourgault 8800 Air Seeder with Bourgault 3225 Cart, 2 compartment with hydraulic loading auger, hyd fan, 8 inch spacing, Bourgault 4 row harrows, single drop, anhydrous drop, s/n 822069, cart s/n6225
- 100 ft Bourgault Centerion II Sprayer, mix tank, hyd pump, disc markers with monitor
- Handler III Chem Handler with fittings, s/n 21471
- Water meter that fits on Chem Handler
- Bourgault Knock Ons - mounting brackets
- 12inch sweeps and 10inch sweeps
- 16inch sweeps
- Crop lifters
- Bin Sweep, Hyd, tank, pump, and flighting
- Misc openers
- Flexicoil openers Part #22626
- Valmar 2420 applicator, implement mount, s/n 242087042
- Mobility 500 Fertilizer Spreader 5T
- Seed Tender - no scale
- Hitch for pulling anhydrous tank with hyd winch
- Dutch NH3 KPS tips, bolt-on
- 13in x 70 ft Farm King Auger, 540 PTO, no hyd hopper, no elec or hyd lift, no reverse, no hyd hopper mover, s/n 219004715
- HD7-1000 Sakundiak Auger with Honda GX 390 motor, s/n 60867
- HD7-1000 Sakundiak Auger, No motor, s/n 60868
- 2005 Killbros Grain Cart 1820, approx 900 bushel, roll tarp, 16 inch unload auger, Firestone 30.5L-32 14 ply rating, tubeless, s/n D43840118
- 4000 BU hopper bin with skids, has had fertilizer in it and has dents
- Hyd wire roller - new shop built
- Rock Hock - new shop built, 12.5L-15FI hwy imp tires
- Gravity wagon 300 bushels
- 5ft JD 513 scrub cutter, 3PT, s/n W00513X035375
- 6ft Farm King 655 finishing mower, 3pt, s/n Y65550000009
- 5ft 3pt rake
- 7ft 3pt cultivator
- 4ft roto tiller
- Handy hitch - side arm, can be used on any rotary mower
- Buhler quick hitch - Cat2
- 7 ft shop built box scraper
- Cattle oiler
- 10 ft Miami feed trough
- 15 ft feed trough, Green
- 15 ft feed trough, Green
- Combination panels 24 ft - free standing with boards
- Combination panels 24 ft - free standing with boards
- Free Standing Panels - 24 ft
- Combination panels 24 ft with 12 ft gate
- Combination panels 24 ft with 16 ft gate
- Combination panels 24 ft free standing
- Combination panels 24 ft free standing
- Combination panels 24 ft with 16 ft gate
- Free Standing panels, 24 ft
- Combination panels 24 ft free standing
- Combination panels 24 ft free standing
- Combination panels 24 ft free standing
- Combination panels 24 ft free standing
- Free Standing panel 10 ft 8 inches with gate 16 ft
- 16 ft gate - 6 bar
- 10 ft panels - 6 bar
- 8 ft feed panel
- 3 gates - 74inch, 88inch, 85inch
- 14ft panel with 47inch walk thru gate
- cattle waterer panel 9ft with walk thru gate 41inch
- 12ft panels - 6 bar
- 2 42inch walk thru gates and 1 32inch walk thru gate
- round bale feeder
- round bale feeder
- round bale feeder
- round bale feeder
- round bale feeder
- round bale feeder
- Fence Posts 3-4 inch approx 6ft long
- Fence Posts 5-6 inch approx 7-8ft long
- Fence Posts 5-6 inch approx 6ft long
- 10ft x 10ft Maternity pen with squeeze and headgate, 2 inch tubing, 5 bar
- 24ft x 13ft maternity pen with dividing gate in center, posts 3inch tubing, 1 inch sucker rods for bars, 3 gates-2inch tubing
- Rays crowding tub, chute and headgate with squeeze, Real Industries Squeeze Chute with auto catch head gate, palp cage, straight alley and crowding tub
- Gehl 175 manure spreader
- slough pump with Kawasaki motor OHV FC150V and reel of hose
- Calf puller
- 1 roll New barbed wire - part roll
- Quartz RAY electric infrared heater
- Blue calf sled
- Black calf sled
- Westeel Double wall slip tank; 454L or 99 gal with hand pump, tank like new
- Buddy Lube Oil tank and storage compartment
- 70 inch heavy press with 1 1/2 HP motor and pump
- 18 inch x 8 ft roller table
- Pallet - irrigation pipe fittings
- 4x4 castor wheel trolley for 45 gal drums
- Plate with ball for 5th wheel
- Tool box for regular 1/2 ton (Delta)
- 5 NEW pick-up belts - 17.50x53.50; 17.50x44.25; 21.75x56.75, 17.50x44; 17.50x42.50
- Tire changer, hydraulic
- All New Filters - 3x engine air 86 series Case, 1xinner air 86 series Case, 6x hyd filters 76.66 series Case, 6x fuel filters 86, 66 series Case, 3xengine oil 86,66 series Case
- Campbell Hausfeld inflation and fastening 4 gal air compressor - NEW
- Snap-On 3/4 drive sockets 2, 2 1/8, 2 3/16, 2 1/4, 2 3/8 inch, Westward 1 inch drive impact socket, T and E tools 1 inch impact socket, 3 inch socket New, torque multipliers, Westward 1 inch breaker bar
- 2x Kohler Command Pro 18-30HP engine kit
- 2x Kohler Command Pro 18-30HP heavy duty air cleaner
- Fifth wheel lubricant (20), grain trailer wheel parts, 2-truck road flares, folding creeper
- Power painting system - 1-Tundra air PVC air hose 3/8inchx50ft, New 1 - Tundra air PVC air hose 3/8inchx25ft
- Red Tek 12a-A/C recharge & retrofit kit plus 12 cans Robinair refrigerant charging hose and gauges x 2
- EZ-steer motor brackets
- Hypertherm power max 380 plasma cutter, tips and books
- Mastercraft Bi-metal hole saw cut 16 pieces-NEW, Act 7000 Digital Thermometer Pyrometer, standard probe, K57 K
- Bostitch coil roofing nailer RN46-1-new, 1 1/4inch coil roofing nails-full new box Grip Fast, 1/2 box Steel Linx coil roofing nails
- Powerfist double flaring tool kit, Mac 700 Digital Thermometer Pyrometer, standard Probes, Mastercraft tap and die set 76 pieces
- 1inch Torque Wrench 100-700ft-lbs - like new
- The New MK11 bead - Cheata
- New Reman Bosch Alternator 165 AMP
- New -Winch in a bag
- Metric 8-24mm set wrenches, Standard 3/8-1inch set wrenches, standard 3/8-3/4inch wrenches in case
- Standard 3/8 - 1 1/4inch wrenches set, 5 pipe wrenches
- New - NH3 face mask
- Cement mixer
- Part roll of black wire
- Approx 4500' of 1" braided rope
- Grey Cladding - used approx 20 sheets x 16 ft
- Grey Cladding - used approx 18 sheets x 11 ft 6 inches
- Black Cladding - used approx 14 sheets x 12 ft and approx 5 sheets x 8ft
- Light Grey Cladding - used approx 14 sheets -various lengths 4 ft - 6 ft
- Ridge Cap-Grey Used -approx 4 x 11 ft and White used 4 x 10 ft
- Large selection of NEW dimensional lumber (treated & non-treated), complete list on website

See www.fraserauction.com for complete listing

FRASER AUCTION SERVICE LTD.

Brandon, MB Auctioneer: Scott Campbell / Jesse Campbell

P: 204-727-2001 F: 204-729-9912 TF: 1-800-483-5856 E: office@fraserauction.com www.fraserauction.com

Licensed and bonded. P.L. License #918093. Member of M.A.A., S.A.A., A.A.A., A.A.C.

NOTE: Cheques of \$50,000 or more must be accompanied by bank letter of good standing. For more information on this please call Fraser Auction 204-727-2001

Not responsible for errors in description. Subject to additions and or deletions. Property owners and Fraser Auction Service not responsible for any accidents. GST & PST where applicable.

TERMS: Visa, MasterCard, Debit, Cash, E-Transfer, Bank Wire Transfer, or cheque. Sale conducted by FRASER AUCTION SERVICE 1-800-483-5856 www.fraserauction.com



FLYNN FARMS LTD

BILL & CAROLYN FLYNN

ONLINE RETIREMENT FARM AUCTION

BIRTLE, MB. | MONDAY, APRIL 11TH | 12:00PM

For more information or to schedule viewing of equipment contact seller:
Bill Flynn 204-773-0459 (Call or Text)

ONLINE ONLY PRE-BID LIVE VIRTUAL www.fraserauction.com



DIRECTIONS: GPS: 50.3318, -100.877

From Birtle, MB. (Jct #83 & #42) - 10.5kms south on #83 to Rd 90N, 11.6kms east on Rd 90N to Rd 148W, 0.4kms north on Rd 148W to Lane #90033, (East side)

From Isabella, MB. (Jct #355 & #474) - 7kms north on Rd 148W to Lane #90033 (East side), Note: When you hit the STOP sign continue north 0.4kms

From Solsgirth, MB. (Jct #16 & #272 hwy) - 22.4kms south on #272 hwy to Dead End, 3.2kms east to RD 148W, 0.4kms north on Rd 148W to Lane #90033 (east side)



TRACTORS:

- 2009 McCormick XTX 145 XtraSpeed MFWD tractor 145hp w/McCormick L-175 high lift loader, 92" bucket, joystick controls, 3pt, dual pto, 3 remote hyd, 3pt & pto controls on rear fenders, 640/85R42 singles rear with wheel weights, 420/85R28 fronts, poly fender kit, 32 speed pwr shift trans with shuttle, air ride seat, buddy seat, 2795 hours showing, (never been used on livestock operation only ran stone picker & auger)
- 48" pallet forks w/ALO mounts
- 2015 CaseIH 580HD AFS 4WD tractor 580hp w/800/70R38 duals, 6 remote hyd, return line, 55 GPM High Capacity hyd pump, front and rear balanced weight package, mounted tow cable, Deluxe cab with leather, pwr shift trans with shuttle, Integrated hyd auto steer, AFS Pro 700 monitor, CaseIH 372 dome, 2395 hours showing, s/nZEF303337(only approx. 300 hours since unit was through CIH Certified Inspection at Rocky Mountain Equipment Shoal Lake) (2nd owner unit - bought new locally)
- 2010 CaseIH 385 AFS Steiger 4WD tractor 385hp w/Goodyear 520/85R46 duals, 4 remote hyd, return line, 44 GPM Standard hyd pump, rear weight package with 14 plates, hyd Integrated auto steer, AFS Pro 600 monitor, CaseIH 372 dome, 16 speed pwr shift trans with shuttle, 3750 hours showing, s/nZAF119398 (new batteries fall of 2021)
- Trimble EZ-Guide 500 with EZ-Steer wheel motor and Terrain Compensator

HARVEST:

- 2012 MacDon M105 swather w/30' MacDon D60-S header, 2-speed hydro, pickup reel, Fore/Aft, lateral tilt, MT2000 mounted poly roller, 1082 engine hours showing, 775 cutting hours showing, s/n228591 (1 owner unit)
- 9' metal swath roller
- 2014 CaseIH 8230 AFS combine w/CaseIH 3016 (15) Series II header, Seed Saver, hyd wind guard, hopper ext, Big Tube rotor, extra fine cut internal chopper, FPT engine, long auger, stone trap, 520/85R42 dual drive rubber, 600/65R28 rear rubber, Hyd Integrated auto steer, AFS Pro 700 monitor, CaseIH 372 dome, Deluxe cab with leather, 1442 engine hours showing, 1064 rotor hours showing, s/nYDG222684
- 2010 CaseIH 8120 AFS combine w/CaseIH 2016 (16) pickup head, Swath Master pickup, Seed Saver, hyd wind guard, Cray hopper ext, Big Tube rotor, Iveco engine, long auger, stone trap, 20.8-42 dual drive rubber, 28L-26 rear rubber, fine cut internal chopper, chaff spreaders, 2549 engine hours, 1938 rotor hours showing, GPS ready, AFS Pro 600 monitor, s/nYAG208920
- 2009 35' CaseIH 2142 Draper header w/pickup reel, pea auger, Fore/Aft, lateral tilt, self-transport, single knife drive, CIH adapter, single point hookup, s/nY9ZN00828
- 2013 35' CaseIH 2162 Flex Draper header w/split pickup reel, pea auger, single knife drive, Fore/Aft, lateral tilt, CIH adapter, single point hookup, self-transport, always shedded, s/nYDZN36170

SPRAYING:

- The Handler I chemical mix system 2"
- 2013 CaseIH 3330 Patriot sprayer w/AIM Command, 120' booms, fence row nozzles, 1000-gal SS tank, 3" fill plumbing with adapter to 2", 650/65R38 rubber, poly fender kit, 7 section boom controls, AFS Pro 700 monitor, CaseIH 372 dome, Hyd integrated auto steer, auto boom, auto shutoff, Deluxe cab with leather, 1571 hours

showing, s/nYCT033071 (rear engine seal was replaced spring of 2021)

- GoodYear DT800320/90R46 in-crop rubber on Patriot rims
- Hyd sprayer tire jack with 35-ton air/manual jack & 700lbs Powerfist torque wrench

TANKS:

- 1250-gal Freeform HD poly black-out tank w/2" valve (Tank A)
- 1250-gal Freeform HD poly black-out tank w/2" valve (Tank B)
- 1250-gal Freeform HD poly black-out tank w/2" valve (Tank C)

TRUCKS & TRAILERS:

- 2002 Dodge Ram Laramie SLT 2500 4x4 Ext cab 4-door w/Cummins 24 valve Turbo Dsl engine, auto trans, 16" rubber, Line-X spray in box liner, Factory tailgate & air flow tailgate, hitch rails in box, Remote Start, 197,101 showing, SAFTIED, VIN#3B7KF23682M292399 *Truck has been in family since new. This truck has seen very little winter driving and back seat has hardly been sat in.*
- 2007 GMC Sierra 2500 HD 2wd dsl 4 door truck w/long box, 6.6 Liter Duramax engine, Allison auto trans, 16" rubber, cloth interior, pwr locks, manual windows, seats 6 passengers, 218,934 showing, SAFTIED, VIN#1GTHC23667F505134
- 1996 Freightliner t/a grain truck w/20' box, roll tarp, rear hoist controls on both sides, remote hoist & tailgate, pintle hitch, rear air supply lines, 11R24.5 rubber, 12,000lbs front & 40,000lbs rear, 460hp Cummins N14 Plus (Red Top) engine, 13 speed Eaton Fuller trans, 525,581 showing, SAFTIED, VIN# 2FUPDDYB7TA860429
- 1980 GMC 7000 s/a grain truck w/15' box, roll tarp, 10,00-20 rubber, V8 gas engine, 4+2 trans, 7,000lbs front & 17,000lbs rear, 57,465 showing, SAFTIED, VIN# T17DBAV599448
- Ford F600 s/a grain truck w/16' box, NO tarp, 9,00-20 rubber, gas engine, 5+2 trans, 54,943 showing, VIN# F60DCW42038
- 2002 Mack Vision T/A highway tractor w/64" high rise bunk, E7-460 Mack engine, 13-speed Eaton Fuller trans, 11R22.5 rubber, 12,000lbs front & 40,000lbs rear, 1,194,297 showing, 24,005 hours showing, SAFTIED, VIN# 1M1AE07Y93W013865, 2nd owner
- 2009 40'Jet t/a Aluminum dbl hopper grain trailer w/rounded hopper cones, air ride, air gauges, sight glass, roll tarp, 11R24.5 rubber, SAFTIED, VIN# 5JNGA40299H0009361, Owner unit
- 41' Tri-axle highboy flat deck trailer (Super-B lead converted with deck over rear wheels), strap winches, 11R24.5 rubber

SEED & TILLAGE:

- 50' Morris 2000 tillage w/Raven Accu-Flow Super Cooler NH3 kit, GPS Variable rate, 5 sectional controls, 12" spacing, 1" carbide tip openers, 4-bar Morris harrows, tank hitch, (Includes some spare openers), s/n2440004429
- 40' JD 610 tillage w/3-bar Flexi-Coil harrows, bolt on sweeps, s/n003033
- 40' JD 1600 series tillage (for parts) Lots of shanks and assemblies, some Degelman harrows and arms. Lots of

good parts and cylinders

- 35' CaseIH 4900 tillage w/floating hitch, 3-bar Summers harrows, bolt on sweeps, extra shanks and assemblies included
- 60' Laurier hyd harrows w/like new tines, s/n2582
- Degelman RP6000 Signature Series rotary stone picker w/hyd drive, hyd hitch, rock apron, 16.5L-16.1SL rubber, s/n24303
- Degelman R570S rotary stone picker, ground drive with clutch, s/n12751
- 70' Degelman 7000 Strawmaster heavy harrows w/3255 Valmar applicator (Valmar has custom tarp cover), 1 season on new Carbide tip tines (approx 1500 acres), harrow s/nSM6865, Valmar s/n3255-130065 (1 owner unit)
- 22' Salford I-5122 high speed tillage w/front notched & back smooth, 3-bar heavy harrows, rear rolling baskets, 305/70R22.5 main frame rubber, s/n161193
- 16' Pelloquin box scraper w/hyd angle, 17.5L-24 rubber, s/n16-1159

GRAIN HANDLING:

- Farmking 1370 PTO swing hopper auger w/dbl augers in hopper, hyd hopper wheel drive, 540 pto, reversible gear box, poly flex spout, s/n NA (Unit has never seen fertilizer)
- Sakundiak HD8-1200 auger w/ Hawes Agro 2-wheel mover, Kohler Command Pro 25hp engine (engine is 1 year old), electric clutch switch, Wheatearth bin sweep with back plates, hyd lift winch, s/n65551
- Convey-All TCP-1645 conveyor w/10hp 1ph electric motor, started switch, 120' length of HD cord, removable hitch, s/n191010
- Sakundiak HD8-39 auger w/Kohler Command Pro 20hp engine, electric lift winch, poly flex spout, s/n70692
- Westfield 7-36 auger w/Kohler Magnum 14hp engine, s/n01601
- Keho Super-Flow 5hp aeration fan w/Grain Guard 100,000 BTU supplemental heater, Fan s/nS5-5414, Heater s/n6042

ATVS:

- 2013 Honda 4X4 Big Red UTV w/Full windshield, half doors, side curtains, soft rear window, manual dump box, winch, bench seat, 8569 showing, VIN# 3H1VE0129CD300110
- 2004 Polaris 700 Twin Sportsman 4x4 quad (Yellow) 4x4 w/On Demand Auto trans, front and rear racks, winch, 3942 showing
- 2004 Polaris 700 Twin Sportsman 4x4 quad (Blue) 4x4 w/On Demand Auto trans, front and rear racks, winch, 6156 showing, VIN# 4XACH68AX4A013223

RING #2 TIMED SALE

Details & list of all other items not listed here can be found on www.fraserauction.com under Ring #2 for this sale

See www.fraserauction.com for complete listing

FRASER AUCTION SERVICE LTD.

Brandon, MB Auctioneer: Scott Campbell / Jesse Campbell

P: 204-727-2001 F: 204-729-9912 TF: 1-800-483-5856 E: office@fraserauction.com www.fraserauction.com

Licensed and bonded. P.L. License #918093. Member of M.A.A., S.A.A., A.A.A., A.A.C.

NOTE: Cheques of \$50,000 or more must be accompanied by bank letter of good standing. For more information on this please call Fraser Auction 204-727-2001

Not responsible for errors in description. Subject to additions and or deletions. Property owners and Fraser Auction Service not responsible for any accidents, GST & PST where applicable.

TERMS: Visa, MasterCard, Debit, Cash, E-Transfer, Bank Wire Transfer, or cheque. Sale conducted by FRASER AUCTION SERVICE 1-800-483-5856 www.fraserauction.com



FRANK STEVENS

ONLINE RETIREMENT FARM AUCTION

BALDUR, MB. | TUESDAY, APRIL 12TH | 12:00PM

For more information or to schedule viewing of equipment contact seller:
Frank 204-526-7152 (Call or Text)

ONLINE ONLY PRE-BID LIVE VIRTUAL www.fraserauction.com



DIRECTIONS: GPS: 49.3265, -99.3131

From (Jct #5 & #23 hwy's) 6.8kms South on #5 hwy to Road 22N, 50 yards east on Road 22N to Lane #81153 (north side)

From (Jct #5 & #253 hwy's) 6.6kms North on #5 hwy to Road 22N, 50 yards east on Road 22N to Lane #81153 (north side)



TRACTOR:

- 2005 NH TJ375 4WD tractor 375hp w/4 remote hyd, return line, power shift trans with shuttle, Firestone 710/70R42 Duals, Inner wheel weight package, 6689hrs showing, s/nRBS003889

HARVEST:

- 2002 Westward 9352 sp swather w/30' CaseIH 2052 Header, Outback S2 Light bar Guidance system, Outback EDrive TC box, split pick-up reel, fore/aft, single point hookup, single knife drive, turbo dsl engine, 2 spd hydro, Firestone 540/65R24 drive rubber, rear weight package with 10 suitcase weights, inner weight ballast, 1906hrs showing, s/n149869
- 10' poly swath roller
- 2007 CaseIH 2588 AFX combine w/CaseIH 2015 pick up header, Swath Master pickup, hyd wind guard, Seed Saver, new pickup belts, Maurer hopper ext, long auger, internal chopper, AFX rotor, chaff spreader, 1200 acres on new sieves with outside adjustment, stone trap, Keystone grates, AFS Pro 600 monitor, 3093 engine hours showing, 2406 rotor hours showing, new gear box oils, new interrupter bars 2020, new bearings + bushings in variable pulley on rotor and unload auger, new chopper blades in 2019, rotor gear box seals done in 2018, New batteries November 2021, s/nHAJ300418
- 30' CaseIH 2062 Flex Draper header w/873 MacDon throat adapter, self transport, split pickup reel, fore/aft, pea auger, single knife drive, Crary guard system, s/nNA (under pea auger mounting plate)
- UFT 760 Hydra grain cart w/hopper extensions, roll tarp, 14" hyd unload auger, 30.5L-32 rubber, onboard scale + scale head (needs sensors), s/n6753

SPRAYER:

- Willmar Ranger 7200 sp sprayer w/90' booms, Outback STS Hyd integrated auto steer, Automate 4 section boom control, 600gal poly tank, 60gal fresh water rinse tank, (4) Stainless crop dividers, (2) sets of nozzles 5 + 10 ga, 12" + 3" plumbed fill, ground speed radar, BKT 270/95R44 narrow in crop rubber, 18.4-38 Floatation rubber, Cummins

dsl engine (valve cover gasket done summer 2021), 2814hrs showing, Spare parts hub to go with, s/nNA

- 1250 IMP-gal poly water tank w/Honda GX200 3" pump, 2" Handler I Chemical system on t/a wagon

GPS & CAMERAS:

- CaseIH FM750 Trimble EZ Steer wheel motor w/Terrain Compensation (No Unlocks)
- Cab Cam system w/Quad screen monitor, 6 cameras, 2 power cords

TRUCKS:

- 1975 Dodge 500 s/a truck w/14' deck (has sides and tailgate to convert back to Cancade grain box), 1700gal black fibreglass tank, 2" Honda GX-260 pump, fire nozzle and spray wand on board, 318 gas eng, 4-spd standard trans, 8.25-20 rubber, 59,314 Showing, VIN# D51EG5J010534
- 2005 Freightliner Columbia t/a grain truck w/20' Loadline Box, Roll tarp, remote and rear hoist + tailgate controls, pintle hitch and air supply at rear, 450HP Mercedes dsl, Smart Shift auto trans, 11R22.5 rubber, 12,000lbs front, 40,000lbs rears, Air ride, 744,606 showing, SAFTIED, VIN# 1FUJF0CU25LN73457
- 1994 Mack CH613 t/a grain truck w/20' Midland box, Michaels roll tarp, hoist controls on remote and at rear, 350HP Mack Dsl engine with tuner, 10-spd Eaton Fuller trans, 11R22.5 rubber, air ride suspension, single cylinder telescopic hoist, 12,000lbs fronts, 40,000lbs rears, pintle hitch and rear air supply, Rebuilt Injection pump, 183,899 Showing, 22,109hrs showing, Vin# 1M1AA13Y8RW030270

SEED & TILLAGE:

- 35' Morris Magnum CP-731 chisel plow w/adjustable hitch, 3-bar harrows, bolt-on sweeps
- Degelman RD320 rock hook w/New master cylinder, s/n1327
- Degelman R570s ground drive stone picker, no clutch s/n13839
- 8' HLA Rock bucket w/Ezze-On loader mounts, s/n16LA30241
- 70' Degelman Strawmaster 7000 heavy

harrows w/3255 Valmar, 2 seasons on new hoses, new control box, less then 3000 acres on new Bourgault carbide tip tines, 2 seasons on 16.5SL-16.1 diamond tread rubber, s/n2354

- 60' Laurier HP-8X8 harrow packer bar w/P20 coils, s/nNA
- 52' Bourgault 5710 air drill w/7" spacing, 3/4" openers, single chute, 3" rubber over steel packers, 11L-15SL rubber(, Bushings and bearings have been done on unit), s/nAH2462
- 2004 Bourgault 5350 air cart w/HP 491 monitor, triple compartment, self load auger, triple metering with stainless steel augers, single fan, wired for cameras, rear hitch, light kit, Goodyear 21.5-16.1SL front rubber, Goodyear 20.8L-26 rear rubber, s/n37887AS-01

GRAIN HANDLING:

- REM 1026 grain vac w/Tri-fold auger, 1000pto, steel hose ki,t bin clean nozzle, rear hitch, s/nNA
- Sakundiak HD8-1200 auger w/Hyd self mover kit, Hyd lift winch, 23hp Kohler engine with cold weather kit, s/n45616
- 2009 Brandt 1370 PTO swing hopper auger w/electric hopper mover with remote, electric hopper winch, double augers in hopper, 540 pto, reversible gear box, poly spout, s/n90643
- Sakundiak HD10-2200 PTO swing hopper auger w/double augers in hopper, reversible gear box, 540 pto, poly auger spout, s/n52877

OTHER ITEMS:

- 7' truck box trailer (NO TOD)
- 9' Allied Farmking YC1080C HD 3PT snowblower w/ 1000PTO, Double Auger, Hyd Chute control, Adjustable skids, On board hyd flow control, s/n13000038

RING #2 TIMED SALE

Details & list of all other items
 not listed here can be found on
www.fraserauction.com
 under Ring #2 for this sale

See www.fraserauction.com for complete listing

FRASER AUCTION SERVICE LTD.

Brandon, MB Auctioneer: Scott Campbell / Jesse Campbell

P: 204-727-2001 F: 204-729-9912 TF: 1-800-483-5856 E: office@fraserauction.com www.fraserauction.com

Licensed and bonded. P.L. License #918093. Member of M.A.A., S.A.A., A.A.A., A.A.C.

NOTE: Cheques of \$50,000 or more must be accompanied by bank letter of good standing. For more information on this please call Fraser Auction 204-727-2001

Not responsible for errors in description. Subject to additions and or deletions. Property owners and Fraser Auction Service not responsible for any accidents. GST & PST where applicable.

TERMS: Visa, MasterCard, Debit, Cash, E-Transfer, Bank Wire Transfer, or cheque. Sale conducted by FRASER AUCTION SERVICE 1-800-483-5856 www.fraserauction.com



HJ SHAW FARMS LTD.

HARVEY & JANICE SHAW

ONLINE RETIREMENT FARM AUCTION

CARDALE, MB. | WEDNESDAY, APRIL 13TH | 12:00PM

For more information or to schedule viewing of equipment contact seller:
Harvey 204-365-0025 (Call or Text)

ONLINE ONLY PRE-BID LIVE VIRTUAL www.fraserauction.com



DIRECTIONS: GPS: 50.2657,-100.3913

From Cardale, MB. (Jct #355 & #354), West on #355 to #354 (RD 127W) Signs to Strathclair, 2.8kms north on #354 to Lane #85117 (east side)

From Strathclair, MB., 15.3kms south on #354 hwy to Lane #85117 (east side)



TRACTORS:

- 2014 CaseIH 470HD Steiger 4wd tractor 470hp w/deluxe cab, heated leather seat, power shift transmission with shuttle shift, hyd integrated auto steerin, AFS Pro 700 monitor, CaseIH 372 Dome, 6 remote hyd with return, Firestone 800/70R38 Duals, rear weight package with 10 plates, front weight package, Max light pkg, 1013hrs showing, s/n-ZEF300435
- 1965 JD 3020 2wd tractor 60hp w/syncro trans, 2 remote Hyd, dual pto, 15-30 rear rubber, s/n-78959
- 8' front mount blade

HARVEST:

- 2013 CaseIH WD1203 swather W/30' header with self transport, pickup reel, Schumacher single knife drive, Fore/Aft, belly mounted roller, Trimble EZ-Guide 250, EZ-Steer wheel motor, 525hrs showing, s/n-YCG667065
- 6' metal swath roller
- 2016 CaseIH 8240 AFS combine W/CaseIH 3016 (15') Series II header, seed saver, hopper extension, long auger, blower, large tube rotor, Fine cut internal chopper, Max light pkg, 620/70R42 dual front rubber, VF 750/65R26 rear rubber, Deluxe cab, heated leather seat, Hyd Integrated auto steer, AFS Pro 700 monitor, 514 threshing hours showing, 650 engine hours showing, s/n-YGG231970
- 2012 35' CaseIH 2142 draper header W/ Pick-up reel, Fore/Aft, single knife drive, self transport, model G156915 throat adapter, single point hook up, s/n-YCZN01791

SPRAYER:

- 2009 Rogator 1084 sprayer w/100' spray booms, 1100-gal stainless steel tank, onboard poly fresh water tank, 23.1R30 Flotation rubber, 320/90R50 in-crop rubber, Tridekon stainless crop dividers, 2" and 3" fill valves, 5 way nozzle bodies, Air Bubble Jet nozzles, 5 section boom controls, Raven Viper Pro Smart Trax Version 4.0, hydraulic intergrated auto steer, auto rate control, auto boom height, 1986 hrs Showing, s/n-AGCA1084Ju001012
- Chem Handler I chemical mix station 2"

TRUCKS & TRAILER:

- 2005 IH Eagle 9400i grain truck w/20' Canade box, roll tarp, remote hoist and tailgate, rear hoist controls, 11R22.5 rubber, Rear hitch and air supply, 435hp Cat engine, Eaton Fuller auto Transmission, 12,000lbs fronts, 40,000lbs rears, 26,638 showing not original, SAFETIED, VIN# 1HTLDTVPOHH471462
- 1993 Wilson grain trailer Single axle pup trailer w/Single hopper, 24.5 rubber, front steering axle, roll tarp, VIN# 1W1NCFAD4PB218481
- 1987 IH S1900 grain truck single axle w/16' Midland Box, roll tarp, remote hoist and tailgate, 11R22.5 rubber, plumbed for drill fills, IH 466 diesel engine, Allison 4 speed auto trans, 174,728 showing, Safetied, VIN# 1HTLDTVPOHH471462

SEED & TILLAGE:

- 50' CaseIH Concord ATX 5010 air drill w/10" spacing, Atom Jet 4" carbide tip splitter boots, double chute, 6.5" tire packers, 3 bar harrows, Blockage Monitor, Light kit, s/n-CBJ0008228
- CaseIH ADX 3380 poly air cart, 118/93/169 tank split, dual fans, camera in front tank, self loading auger, s/n-CBJ0005360
- 56' NH ST830 tillage w/Knock-on sweeps, 4 bar harrows, 12" spacing, 650lbs trips, s/n-YAS003932
- 84' Summers heavy harrows w/near new tines, s/n-A0073
- 80' Morris 80-HDB harrows, s/n-H800000129
- 16' JD deep tillage w/lift cylinder, spike shovels
- 14' MF 52 tandem disc w/5 sections of Diamond harrows with drag bar (No hyd cylinder included)
- Trailer style Kirchner V-Ditcher
- Letourneau scraper w/10-yard capacity, 20.00-20 rear rubber, 15.50-20 front rubber
- Summers hyd rotary stone picker w/Rock Apron, 14L-16.1 rubber s/n-88527

GRAIN HANDLING:

- Sakundiak HD10-2000 PTO swing hopper auger w/double augers in hopper, electric and hand winch, reversing gear box, s/n-61948
- Meridian HD8-46 auger w/Meridian mover kit, Kohler Command Pro 25hp engine, Electric

Clutch, reversing gear box

- Sakundiak HD8-1200 auger w/self mover kit, 20hp Linamor LX790 engine, hyd lift winch, wheat heart bin sweep, s/n-53791
- Brandt 5200EX grain vac w/1000 PTO, Tri-Fold Auger, exhaust stack & exhaust hose kit, rubber and steel hoses, s/n-117632-16

HOPPER BINS:

- 4000-bus Frontier epoxy coated hopper bin on legs w/mounted ladder, sight glasses, lid opener, s/n-22382W, (Bin A)
- 4000-bus Frontier epoxy coated hopper bin on legs w/mounted ladder, sight glasses, lid opener, s/n-20358W, (Bin B)
- 4000-bus Norstar hopper bin on double skids w/mounted ladder, sight glasses, lid opener, s/n-3259, (Bin Q)

TANKS & PUMPS:

- 1250 gal poly tank (green)
- 2013 1000-gal Westeel fuel tank w/Fil-Rite HD FR310V pump, s/n671301112
- Huge L 1000-gal fuel tank
- Benecor 110-volt DEF pump w/auto off nozzle (hangs on tote)

OTHER ITEMS:

- Approx. 100 gal galvanized tank on wheels used for fire protection
- 4-wheel wagon

RING #2 TIMED SALE

Details & list of all other items
 not listed here can be found on
www.fraserauction.com
 under Ring #2 for this sale

See www.fraserauction.com for complete listing

FRASER AUCTION SERVICE LTD.

Brandon, MB Auctioneer: Scott Campbell / Jesse Campbell

P: 204-727-2001 F: 204-729-9912 TF: 1-800-483-5856 E: office@fraserauction.com www.fraserauction.com

Licensed and bonded. P.L. License #918093. Member of M.A.A., S.A.A., A.A.A., A.A.C.

NOTE: Cheques of \$50,000 or more must be accompanied by bank letter of good standing. For more information on this please call Fraser Auction 204-727-2001

Not responsible for errors in description. Subject to additions and or deletions. Property owners and Fraser Auction Service not responsible for any accidents. GST & PST where applicable.

TERMS: Visa, MasterCard, Debit, Cash, E-Transfer, Bank Wire Transfer, or cheque. Sale conducted by FRASER AUCTION SERVICE 1-800-483-5856 www.fraserauction.com



ABCD FARMS LTD

RON & JEAN BARTEAUX

ONLINE RETIREMENT FARM AUCTION

BIRTLE, MB. | THURSDAY, APRIL 14TH | 12:00PM

For more information or to schedule viewing of equipment contact seller:
Ron & Jean 204-773-6949 (Call or Text)

ONLINE ONLY PRE-BID LIVE VIRTUAL www.fraserauction.com



DIRECTIONS: GPS: 50.4273, -101.1310

From Birtle, MB. (Jct #83 & #42 hwy), 5kms West on #42 to RD 159W, 0.5kms south on Rd 159W to Lane #96112 (west side)



TRACTORS:

- 2013 JD 9360R 4WD tractor 360hp, hyd integrated auto steer, JD 6000 dome, JD 2600 monitor, JD GreenStar 3 display, 620/70R42 duals, rear wheel weights, 5 remote hyd with return line, power shift trans, HID lights kit, 2676 hrs showing, s/nTDP006820
- 2011 McCormick XTX145 Xtra Speed MFWD Tractor 145hp w/McCormick L478 SL high lift loader, 102" bucket, 5 tine Maxi grapple, joystick controls, 32 speed power shift trans, 3PT, dual PTO, 3 remote hyd, 520/85R38 rear rubber, rear wheel weights, 420/85R28 front rubber, front fender package, 1870 hrs showing, s/n6VACU1029
- 1964 JD 3020 DSL 2WD Tractor 77hp w/ JD 46A loader, Syncro trans, dual pto, 2 remote hyd, s/n2T58097
- Moulson's Welding 2-prong bale fork w/ ALO mounts
- Allied 48" pallet fork w/convertible frame, ALO mounts (convertable from pallet fork to bale fork)

HARVEST:

- 2011 CaseIH WD 1203 sp swather w/35' header, split Ull pick-up reel, dbl knife drive, gauge wheels, fore/aft, header has self-transport, 734 engine hours showing, s/nYBG664802
- 1993 30' CaseIH 8230 pt swather w/1000 pto, auto fold, batt reel, s/nCFH0066225
- 2012 JD S680 Combine w/JD 615P pick-up header, Seed Saver, power folding hopper ext, long auger, fine cut chopper, adjustable pre chaffer, 520/85R42 duals on drives, 28LR26 rear rubber, GreenStar 3 monitor, GPS ready, 1842 engine hours showing, 1333 sep hours showing, s/nHC745848

- 2013 35' JD 635D Hydra Float draper header w/pick-up reel, dbl knife drive, fore/aft, pea auger, single point hook-up, Horst 4-wheel transport, s/nTDR755365

TRUCKS & TRAILERS:

- 20' Duncan t/a stock trailer w/single partition gate, rubber floor mats
- 2004 Freightliner Columbia T/A grain truck w/20' Box, roll tarp, rear hoist controls both sides, pintle hitch, Mercedes 410 hp engine, Smart Shift auto trans with clutch, 22.5 rubber, 794,597kms showing, 13,568hrs showing, SAFTIED, VIN# 1FUJA6CV14LM46067
- 1995 Mack CH613 T/A grain truck w/20' B+H, roll tarp, rear hoist controls both sides, 350 Mack engine, 15 speed trans, 12,000 lbs fronts, 40,000 lbs rears, 22.5 rubber, air ride, aux hyd for bin sweep, 986,384 showing, SAFETIED, VIN# 1M1AA13Y5SW049655

SEED & TILLAGE:

- 26' JD 230 tandem disc w/smooth blades, scrapers, s/n031099A
- 14' Kellough off-set disc w/notched blades, front gang has new discs & bearings
- 12' Cockshutt deep tillage w/10" spacing
- 95' Flexi-Coil field sprayer w/850-gal poly tank, mix tank, foam markers, hyd pump (parts unit)
- 72' Summers Super Harrow Plus heavy harrows w/5-bar harrows, s/nM1269H
- 40' Bourgault 8810 air seeder w/ Bourgault 5350 triple compartment air cart, 3 meters, single fan, 10" spacing, ¾" Bourgault carbide tip openers (only done 800 acres), quick attach poly packers, quick attach 4-bar harrows, HP 491 monitor, in-cab shaft speed switches, s/n Tillage 37557CU-09, s/n Cart

37853AS-12,

- 35' Morris 8900 tillage w/floating hitch, 4-bar harrows (new tines), Raven dual valve NH3 Super Cooler, variable rate, Raven SCS 440 NVM control, Bourgault knock-on NH3 knives, s/n8250002637
- 35' Morris Magnum II CP-731 tillage w/3 bar harrows (new arms & new tines), 12" spacing, John Blue NH3 kit (no hoses or clips), like new Knock-on spoons, s/n3348
- Schulte Jumbo 320 hyd drive rotary stone picker, s/n9080041807
- 2 section yard harrows drag bar

LIVESTOCK RELATED:

- 9-wheel Viccon hay rake hyd lift
- NH 353 Mix mill w/540 pto, 6 screens, nearly new hammers, s/n496117
- Quick-Feeder hyd drive feed tank on wheels

GRAIN HANDLING:

- MK130-61 Westfield Plus PTO swing hopper auger w/dbl augers in hopper, hyd lift on hopper, 540pto, s/n158616
- TL10-39 Meridian auger w/Meridian 4-wheel self-mover, 35HP Kohler engine, hyd lift winch, electric clutch, poly spout, s/n02908
- HD7-41 Sakundiak auger w/27HP Kohler engine, s/n45023
- 7-37 Sakundiak auger w/13Hp Honda engine, s/n22058
- Approx. 11' Wheatheart Bin sweep (truck mount style) with back plates & clean up option

RING #2 TIMED SALE

Details & list of all other items
 not listed here can be found on
www.fraserauction.com
 under Ring #2 for this sale

See www.fraserauction.com for complete listing

FRASER AUCTION SERVICE LTD.

Brandon, MB Auctioneer: Scott Campbell / Jesse Campbell

P: 204-727-2001 F: 204-729-9912 TF: 1-800-483-5856 E: office@fraserauction.com www.fraserauction.com

Licensed and bonded. P.L. License #918093. Member of M.A.A., S.A.A., A.A.A., A.A.C.

NOTE: Cheques of \$50,000 or more must be accompanied by bank letter of good standing. For more information on this please call Fraser Auction 204-727-2001

Not responsible for errors in description. Subject to additions and or deletions. Property owners and Fraser Auction Service not responsible for any accidents. GST & PST where applicable.

TERMS: Visa, MasterCard, Debit, Cash, E-Transfer, Bank Wire Transfer, or cheque. Sale conducted by FRASER AUCTION SERVICE 1-800-483-5856 www.fraserauction.com



TWO FAMILY ONLINE FARM AUCTION FOR FRED & DEBBIE DUNN & STEWART CATTLE CO. (BRENT & DALE STEWART) RUSSELL, MB. | TUESDAY, APRIL 19TH | 12:00PM

For more information or to schedule viewing of equipment contact seller:
Fred & Debbie 204-773-0638 (Call or Text) or Brent & Dale 204-773-6392 (Call or Text)

ONLINE ONLY PRE-BID LIVE VIRTUAL www.fraserauction.com



DIRECTIONS TO FRED & DEBBIE DUNN FARM: GPS: 50.8195,-101.1611

From Russell, MB. (Jct #16 & #83 hwy), 6.6kms north on #83 hwy to Rd 124N, 10kms east on Rd 124N to Rd 159W (#478 hwy), 1.3kms south on Rd 159W (#478 hwy) to sale site (west side)

From Silverton, MB. (Jct #45 & #478 hwy), 6.1kms north on #478 hwy to sale site (west side)

DIRECTIONS TO STEWART CATTLE CO. FARM: GPS: 50.8296,-101.1971

From Russell, MB. (Jct #16 & #83 hwy), 6.6kms north on #83 hwy to Rd 124N, 7.3kms east on Rd 124N to sale site (south side)

From Silverton, MB. (Jct #45 & #478 hwy), 7.4kms north on #478 hwy to Rd 124N, 2.7kms west on Rd 124N to sale site (south side)



TRACTORS:

- 1998 JD 9400 4wd tractor 425hp w/ GoodYear 710/70R38 duals, good rubber, front and rear wheel weight pkg, rear suitcase weights (20) x's 40kg suitcase weights, 4 remote hyd with return, Power Quad trans, JD Auto Track Universal 200 Steering wheel (No dome or monitor included), 48 GPM hyd pump, work done at 6000 hrs (injectors, injector cups, water pump, radiator core, dampener pulleys, hinge pins), 6723 hrs showing, s/nRW9400H010417, Fred Dunn
- 1993 JD 8770 4wd tractor 300hp w/ Firestone 520/85R38 duals - 80-%, 3 remote hyd with return, 28 GPM hyd pump, Quad range trans, equipped with radar, approx. 1000 hrs since injectors were done approx. 500 hrs since new exhaust, & new rad core, 7866 hrs showing, s/nRW8770S001193, Fred Dunn
- 2010 Kubota M126X MFWD Tractor 126hp w/Kubota M55 loader, ALO quick attach mounts, 92" bucket, 18.4R38 rear singles, 14.9R24 front singles, 2 remote hyd, dual PTO, 3PT, Hi/Lo power shift trans with left hand shuttle, 2374 hrs showing, s/n50734, STEWART CATTLE Co
- 1984 JD 4850 2WD tractor 211hp w/24.5-32 duals rear, 11.00-16SL 4-rib fronts, front weight kit (12) suitcase weights, 3 remote hyd, 1000 PTO, inside rear rubber has fluid, 15 speed power shift trans, always shedded, 8837 hrs showing, s/nRW50P005240, STEWART CATTLE Co
- JD 3-prong bale spike w/JD 740 mounts, Fred Dunn
- 2 prong bale fork w/JD 640 mounts, STEWART CATTLE Co
- 2 prong bale fork w/ALO mounts, STEWART CATTLE Co

HARVEST:

- 2009 Westward M150 Dual Direction Swather w/35' MacDon D60S header, pick-up reel, fore/aft, header tilt, single point hook-up, gage wheels on header, Harvest Manager Pro monitor, Good Year 600/65R28 drive rubber, 1108 header hours showing, 1386 engine hours showing, s/n190238, Fred Dunn
- 2000 Westward 9350 Turbo sp swather w/30' MacDon 972 Harvest header, split pick-up reel, Roto-Sheers both ends, fore/aft, 2-speed hydro, 500/60-26.5 Trelleborg drive rubber, buddy sea, 11467 engine hours showing, 1152 header hours showing, s/n136035
- 8' Farm King metal swath roller, s/n9361244
- 8' Farm King metal swath roller, s/n9361112, Fred Dunn
- 7' metal concave swath roller, Fred Dunn
- 2008 JD 9870 STS Bullet Rotor sp combine w/JD 615P pick-up head, Seed Saver, manual folding hopper ext, long auger, GoodYear Duals 520/85R38 drives, 28L-26 rear rubber, fine cut chopper with New knives, New in 2020 Sunny Brook concaves and rub bars, Combine was not used in 2021, GreenStar Auto Track ready but not equipped, JD Command Centre monitor, single point hook-up on header, 1949 threshing hours showing, 2606 engine hours showing, s/nH09870S725737, Fred Dunn
- 2004 30' JD 630R Platform header w/full finger auger, batt reel, 2-wheel transport, fore/aft, single point hook-up, light kit, s/nH00630R706030, Fred Dunn
- 2004 30' Honey Bee SP 30 draper header w/pick-up reel, single knife drive, Fore/Aft, lifters, Hyd reel & canvas drives, self-transport, Lexion throat adapter (was on 590R), s/nF-22(300400193)

SKID STEER:

- 1986 Melroe Bobcat 743 skid steer loader w/5' quick attach bucket, 36hp, aux hyd front, 10-16.5 rubber, 4618 hrs showing, s/n5019-M-27838, STEWART CATTLE Co
- 48" skid steer manure fork w/grapple, STEWART CATTLE Co

TRUCKS & TRAILERS:

- 2008 Freightliner T/A Hwy Tractor w/day cab, 11R22.5 rubber, 60 Series Detroit engine, 18 speed Eaton Fuller trans, 12,000lbs fronts, 40,000lbs rears, equipped with auto greaser, full poly fender pkg on drives, always shedded, 619,763 kms showing, SAFETIED, VIN# 1FUJALCK58DAB7307, Fred Dunn
- 1997 Freightliner FL80 S/A truck w/17'x58" silage box with silage end gates (Custom Made) with wood planks for sides, 22.5 rubber, 3208 Cat engine, 10 speed Eaton Fuller trans, 6350lbs fronts, 14,000lbs rear, telescopic hoist, 266,374 kms showing, SAFETIED, VIN# 1FV6JJBB1VH806714, STEWART CATTLE Co
- 1975 Chev C50 s/a truck w/14ft Box, 350 gas engine, 4 speed trans, 37,340 showing, VIN# CCE535V100052, Fred Dunn
- 2004 GMC 1500SLE Z71 off road pkg 4x4 Sierra truck w/4 doors, poly box liner, power windows & locks, AM/FM CD player, tube running boards, 265,570 kms showing, VIN# 2GTEK13T941396340, STEWART CATTLE Co
- 2016 36' Load King T/A Hopper bottom Grain Trailer w/DBL hoppers, roll tarp, air gauges, 11R22.5 rubber, air ride, trailer has never been used in winter, never seen fertilizer, always shedded, SAFETIED, VIN# 2LDHG3626GF062092, Fred Dunn
- 1990 24' Wilson aluminum T/A stock trailer w/roll up rear door, 16" rubber, DBL partition gates, 1 owner trailer, VIN# BEAJC8MG512956, STEWART CATTLE Co

SALE CONTINUED ON PAGE 16

See www.fraserauction.com for complete listing

FRASER AUCTION SERVICE LTD.

Brandon, MB Auctioneer: Scott Campbell / Jesse Campbell

P: 204-727-2001 F: 204-729-9912 TF: 1-800-483-5856 E: office@fraserauction.com www.fraserauction.com

Licensed and bonded. P.L. License #918093. Member of M.A.A., S.A.A., A.A.A., A.A.C.

NOTE: Cheques of \$50,000 or more must be accompanied by bank letter of good standing. For more information on this please call Fraser Auction 204-727-2001

Not responsible for errors in description. Subject to additions and or deletions. Property owners and Fraser Auction Service not responsible for any accidents. GST & PST where applicable.

TERMS: Visa, MasterCard, Debit, Cash, E-Transfer, Bank Wire Transfer, or cheque. Sale conducted by FRASER AUCTION SERVICE 1-800-483-5856 www.fraserauction.com



TWO FAMILY ONLINE FARM AUCTION FOR FRED & DEBBIE DUNN & STEWART CATTLE CO. (BRENT & DALE STEWART) cont'd RUSSELL, MB. | TUESDAY, APRIL 19TH | 12:00PM

For more information or to schedule viewing of equipment contact seller:
Fred & Debbie 204-773-0638 (Call or Text) or Brent & Dale 204-773-6392 (Call or Text)

ONLINE ONLY PRE-BID LIVE VIRTUAL www.fraserauction.com



DIRECTIONS TO STEWART CATTLE CO. FARM: GPS: 50.8296,-101.1971

From Russell, MB. (Jct #16 & #83 hwy), 6.6kms north on #83 hwy to Rd 124N, 7.3kms east on Rd 124N to sale site (south side)

From Silverton, MB. (Jct #45 & #478 hwy), 7.4kms north on #478 hwy to Rd 124N, 2.7kms west on Rd 124N to sale site (south side)

DIRECTIONS TO FRED & DEBBIE DUNN FARM: GPS: 50.8195,-101.1611

From Russell, MB. (Jct #16 & #83 hwy), 6.6kms north on #83 hwy to Rd 124N, 10kms east on Rd 124N to Rd 159W (#478 hwy),
1.3kms south on Rd 159W (#478 hwy) to sale site (west side)

From Silverton, MB. (Jct #45 & #478 hwy), 6.1kms north on #478 hwy to sale site (west side)



LISTING CONTINUED

- 1995 30' Norberts triple axle flat deck trailer w/beaver tails, flip over ramps, 16" rubber, 5th wheel but has slide in hitch farm ball style, strap winches, DBL Jacks, 2700kg axles, VIN# 2N9E7SC48SG017116, STEWART CATTLE Co

FORAGE HARVESTERS - SILAGE WAGONS, & FEEDING EQUIPMENT:

- 2000 NH FP240 pt forage harvester w/ Metal Alert III, pick up header, manual knife sharpener, 1000 PTO, 11L-15SL rubber, rear hitch, light kit, walking beam tandem axles, always shedded, s/n993677, STEWART CATTLE Co
- 1992 NH 892 pt forage harvester w/NH 890-A 8' pick-up header, electric controls, 1 side of knife has never been used, s/n426679, (shedded)
- 12' Jiffy high dump silage wagon w/11.00-20 rubber, s/n-n/a, STEWART CATTLE Co
- 12' Richardton high dump silage wagon w/11.00-20 rubber
- NH 357 mix mill w/power bale feed, 540 PTO, 3 screens, hammers used on all 4 turns, mechanical unload, mineral by pass hopper, always shedded, 1 owner machine, s/n411860, STEWART CATTLE Co
- Schuler 175BF S/A mixer feed wagon w/ Eaton scale, LH discharge, 540 PTO, s/n75F-C085-3216, STEWART CATTLE Co

HAYING EQUIPMENT & MANURE SPREADER:

- 2005 14' MacDon 5020 mower conditioner w/540 PTO, light kit, steel on steel crimp, s/n166344, STEWART CATTLE Co

- 12-wheel buhler/Inland hyd V-rake, STEWART CATTLE Co
- Buhler/Inland Hayliner 2500 DBL arm round bale picker w/14 bale cap, hyd push off, 12.5L15FI rubber, s/n02BM25000314, STEWART CATTLE Co
- 32' s/a truck frame conversion bale wagon with S/A steering dolly under front, 10.00-20 rubber
- CaseIH 1580 tandem axle manure spreader w/DBL beaters, single floor chain, 540 PTO, 3 speed gear box hi/lo & clean out, 10.00-20 rubber, s/nCHC0002968, STEWART CATTLE Co

SEED & TILLAGE:

- Degelman R570S rotary ground drive stone picker w/no clutch, s/n3268, STEWART CATTLE Co
- Degelman R570S Rotary Ground drive stone picker w/clutch, s/n13369, Fred Dunn
- Degelman R570P fork style stone picker, s/n12660, Fred Dunn
- 48' Bourgault FH546-52 field cultivator w/knock on sweeps, 3 bar Degelman harrows, s/n321-6, Fred Dunn
- 49' JD 1650 5-plex tillage w/Micro Trac NH 3 kit, 3 bar Degelman harrows, Bourgault 3/4" 600 carbide tips, s/n-n/a, Fred Dunn
- 32' Bourgault Commander 28-32 tillage w/3 bar Bourgault harrows, Knock-on sweeps
- 29' CaseIH 4800 vibra shank tillage w/3 bar Summers harrows, bolt-on sweeps, adjustable hitch, s/nJAG0062770, STEWART CATTLE Co
- 27' CaseIH 5600 Chisel Plow w/3 bar Degelman harrows, continental NH3 kit, bolt-on sweeps, adjustable hitch, s/nJAG0002508, STEWART CATTLE Co
- 30' Rite Way Jumbo 8000 Heavy harrows w/nearly new tines, s/n97-80383, STEWART CATTLE Co
- 94' Summers hyd harrows, s/n92038, Fred Dunn

- 53' Laurier hyd harrows, STEWART CATTLE Co
- Ashland 80D hyd scraper w/approx. 8 yard cap, s/n5194

GRAIN HANDLING:

- Westfield 8x46 PTO drive auger, s/n62412
- Sakundiak HD7x33 auger w/Kohler Magnum 12HP ES engine, manual lift winch, metal flex spout, s/n44779
- Sakundiak HD6-33 auger w/11HP Honda ES engine, s/n42377, STEWART CATTLE Co
- Kendon galvanized gravity wagon on JD 4-wheel wagon, Fred Dunn

GRAIN BINS:

- 1500 Bushel Westeel Roscoe on hopper cone w/DBL skid, lid opener, (Bin 11) STEWART CATTLE Co
- 15' diameter Hopper bottom bin w/PSP hopper cone, on legs, 3 rings 44" rings, corrugated, mounted ladder, approx. 2000 bushel cap
- 2000 Bushel smooth wall hopper bottom grain bin on skid w/mounted ladder, lid opener, traditional bottom opening, small chute on side (Green) (Bin 4), STEWART CATTLE Co
- approx. 3000-bus Goebel flat bottom bin on wood floor, Fred Dunn

MOWERS & SNOWBLOWER:

- JD Z245 EZ Track zero turn mower w/Edge 48" deck, 23hp, 393 hrs showing, s/nM0Z245D048031, Fred Dunn
- JD 160 Lawn Tractor w/38" deck, gear drive, Fred Dunn
- 74" buhler/Farm King 740 3pt snowblower w/single auger, 540 PTO, hyd chute controls, s/n20201289, Fred Dunn

RING #2 TIMED SALE

Details & list of all other items
not listed here can be found on
www.fraserauction.com
under Ring #2 for this sale

See www.fraserauction.com for complete listing

FRASER AUCTION SERVICE LTD.

Brandon, MB Auctioneer: Scott Campbell / Jesse Campbell

P: 204-727-2001 F: 204-729-9912 TF: 1-800-483-5856 E: office@fraserauction.com www.fraserauction.com

Licensed and bonded. P.L. License #918093. Member of M.A.A., S.A.A., A.A.A., A.A.C.

NOTE: Cheques of \$50,000 or more must be accompanied by bank letter of good standing. For more information on this please call Fraser Auction 204-727-2001

Not responsible for errors in description. Subject to additions and or deletions. Property owners and Fraser Auction Service not responsible for any accidents, GST & PST where applicable.

TERMS: Visa, MasterCard, Debit, Cash, E-Transfer, Bank Wire Transfer, or cheque. Sale conducted by FRASER AUCTION SERVICE 1-800-483-5856 www.fraserauction.com



DREAM. GROW. THRIVE.

Are you ready for auction season?

Apply for pre-approval
financing now

Head to the auction with confidence knowing you're already pre-approved with financing in your back pocket. It's quick, convenient and turns you from a tire kicker to a deal maker.

1-800-332-3301

Ag Equipment Reconditioning

Specializing in farm machinery and semi-tractors

BEFORE



AFTER



BEFORE



AFTER



BEFORE



AFTER



BEFORE



AFTER



Wally and his crew did a fantastic job getting our equipment ready for our sale. They worked under very challenging weather conditions. We had many compliments on the condition of our machinery.

Ed Shaw, Cardale MB.

April 20 /2020

Wally and staff at **Roblin Detail and Shine** did a great job of cleaning and polishing the equipment, which made for a much better sale...

Thanks to Fraser's and Wally for jobs well done!

Mel Green

April 7 /2020

Wally of **Roblin Detail Shine** did very good work, and was worth every cent. Pays attention to detail as well as his customers needs. 5-Star work. Exceeded my expectations!

Malcolm Wild

April 24/2020

From the very first time Wally and his crew drove in the yard, they put forth a sense of professionalism and pride in what they do.

Roblin Detail n Shine cleans your equipment inside and out to a very high standard, helping you achieve the highest price possible.

I would recommend Wally and his crew to anyone.

Rob and Bob Willman, Griswold , MB.

April 22/2020

#1 Choice for farm sale clean-up through MB & SK



ROBLIN DETAIL N' SHINE

Driving up the value of your equipment is our specialty!

Contact Wally
204.937.3030
OR
204.937.0720



GREG & WANDA RABE

ONLINE RETIREMENT FARM AUCTION

ALEXANDER, MB. | WEDNESDAY, APRIL 20TH | 12:00PM

For more information or to schedule viewing of equipment contact seller:
Greg Rabe 204-724-2145 (Call or Text)

ONLINE ONLY PRE-BID LIVE VIRTUAL www.fraserauction.com



DIRECTIONS: GPS: 49.8457,-100.3945

From Alexander, MB. (Jct #1 & #250 hwy), 1km north on #250 hwy to #455 hwy, 6.6kms west on #455 hwy to Rabe RD, 0.4kms north on Rabe RD to sale site (west side)

From (Jct #21 & #455 hwy), 5.1kms east on #455 hwy to Rabe RD, 0.4kms north on Rabe RD to sale site (west side)



TRACTORS:

- 1951 McCormick Farmall M tractor 38hp w/540 pto, single hyd, 13.6-38 rear rubber, s/n264230
- 2007 NH TG305 MFWD tractor304hp w/480/80R46 rear duals, 380/85R34 front duals, front poly fenders, front weight carrier, 3pt, 3pt controls on fenders, 1000 pto, 5 remote hyd, return lines, hyd integrated Trimble auto steer, NH FM 750 monitor, 19 speed power shift trans, 6966 hours showing, s/nZ7RW01418 (This tractor is put through NH inspection by Mazer Group shop every 2nd year)

HARVEST:

- 1992 30' Westward pt swather w/batt reel, 1000 pto, rubber slat canvas, s/n79521
- 8' Inland metal swath roller
- Unverferth 6500 grain cart w/NEW roll tarp, pto drive, 14" auger, 24.5-32 rubber, light kit, s/nB20-590-137
- 2011 NH CR9070 combine w/NH 76C 15' pick-up header, electric stone trap, long auger, manual folding hopper extensions, deluxe chopper, variable High Power header drive, variable speed feeder, lateral tilt, self levelling grain pan, small grain sieves, remote adjustable sieves, 620/70R42 drive duals, 600/65R28 rear, LED lights (except rear field), Deluxe cab with leather, Intelli View monitor, Intelli Steer Ready, yield & moisture logging, 1378 rotor hours showing, 1795 engine hours showing, s/nYBG114909 (This combine is put through NH inspection by Mazer Group shop every year) Complete specs can be found on the factory build sheets shown in pictures!
- 2004 30' MacDon 974 Flex Draper Header w/split pick-up reel, Fore/Aft, self-transport, single knife drive, NH CR adapter, single point hook-up, s/n159850

TRUCKS:

- 1985 Ford LTL 9000 t/a grain truck w/20' Cancade Super Box II grain box, roll tarp, remote chute controls, hoist controls on rear both sides, 11R22.5

rubber, 855 Cummins engine, Fuller Road Ranger 8 spd trans, 453,365 showing, VIN# 1FDYA90W2FVA65433

- 1974 IH Loadstar 1700 Tag Axle grain truck w/18' grain box, roll tarp, 9.00-20 rubber, V8 gas engine, 5+2 trans, 094,561 showing, VIN# 10672DCA15703
- 1982 Chev 60 s/a grain truck w/14' Cancade grain box with extensions, roll tarp, 9.00-20 rubber, V8 gas engine, 4+2 trans, 55,987 showing, VIN# 1GBG6D1A2CV100298

SEED & TILLAGE:

- Chembine 2" chemical mix system w/50-gal poly tank, multi-valve system
- 90' Flexi-Coil 65 sprayer w/1000-gal poly tank, hyd pump, chemical mix tank, wind screens, wash water tank, s/nS069764 (sells with some spare parts) spare wind screen, set of 5-gal, 7.5-gal, 10-gal, & Extend Max Wilger nozzles, 5-gal, 7.5-gal, & 10-gal Tee-Jet nozzles, plus other assorted spare parts
- 28' Bourgault 8800 air seeder w/Bourgault 2115 Special air tank (tank shedded), 3/4" carbide tip openers, 8" spacing, single chute, quick attach poly packers & harrow kit, cameras in both tanks, self-loading auger, drill s/n822064, tank s/n5778
- 50' Degelman StrawMaster 7000 heavy harrow, s/n3072
- 67' Morris hyd harrows
- 67' Dribble Bander liquid fertilizer unit w/Green Drop manifolds
- 29' Morris CP-525 tillage w/3-bar harrows
- 3-bar harrows (sells with stub shank)

GRAIN HANDLING:

- 2014 Brandt 5200EX grain vac w/1000 pto, Tri-Fold auger, steel hose kit, clean-up nozzle, 230 hours showing, s/n108976
- Brandt 10-60 PTO swing hopper auger w/single auger in hopper, reversible gearbox (new gearbox 4 seasons ago), 540 pto, s/n41520A
- Farmking 10x60 mechanical swing hopper auger w/single auger in hopper, s/n9100842

- Sakundiak TL 10-1200 auger w/Hawes Agro 4-wheel mover kit, electric clutch, 29hp Kawasaki engine, hyd winch, s/n66358
- Sakundiak HD 7-1200 auger w/hyd mover kit, 18hp LX 770 Linamar engine, Wheat Heart bin-sweep, manual winch, s/n48545
- Sakundiak HD 7-31 auger w/13hp Honda engine, s/n6852
- Sakundiak HD 8-1600 PTO auger w/hyd winch, s/n24126

GRAIN BINS:

- Meridian 4000-bus hopper bin w/dbl skid, aeration rocket, 5hp Grain Guard aeration fan, mounted ladder, lid opener, Bin s/n6257918, Fan s/n2017-FCW8039
- Approx. 3000-bus Behlin bin on hopper cone w/dbl skid, U-Trough aeration

OTHER ITEMS:

- 1000-gal Westeel fuel tank w/Fill-Rite 20GPM pump, Fill-Rite meter
- Ferris IS2000 Big Block Z zero turn mower w/643 hours showing, 60" deck, 30hp B+S engine
- 5' Woods trailer style rotary mower w/540 pto
- 7' Cockshutt Bar-Mower w/wooden Pitman, 540 pto

WINKLER CANVAS SHED:

- 100'x38' Winkler Canvas building w/20' Accu-Track door, walk-in door, vented back wall, (to be moved by August 1st, 2022)

RING #2 TIMED SALE

Details & list of all other items
 not listed here can be found on
www.fraserauction.com
 under Ring #2 for this sale

See www.fraserauction.com for complete listing

FRASER AUCTION SERVICE LTD.

Brandon, MB Auctioneer: Scott Campbell / Jesse Campbell

P: 204-727-2001 F: 204-729-9912 TF: 1-800-483-5856 E: office@fraserauction.com www.fraserauction.com

Licensed and bonded. P.L. License #918093. Member of M.A.A., S.A.A., A.A.A., A.A.C.

NOTE: Cheques of \$50,000 or more must be accompanied by bank letter of good standing. For more information on this please call Fraser Auction 204-727-2001

Not responsible for errors in description. Subject to additions and or deletions. Property owners and Fraser Auction Service not responsible for any accidents. GST & PST where applicable.

TERMS: Visa, MasterCard, Debit, Cash, E-Transfer, Bank Wire Transfer, or cheque. Sale conducted by FRASER AUCTION SERVICE 1-800-483-5856 www.fraserauction.com



DON & KOLLEEN MITCHELL

ONLINE RETIREMENT FARM AUCTION

BROOKDALE, MB. | MONDAY, APRIL 25TH | 12:00PM

For more information or to schedule viewing of equipment contact seller:
Don & Kolleen Mitchell 204-729-1685 (Call or Text) or 204-354-2126 (Home)

ONLINE ONLY PRE-BID LIVE VIRTUAL www.fraserauction.com

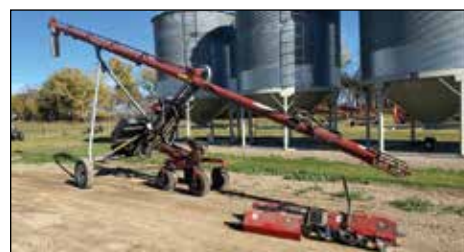


DIRECTIONS: GPS: 50.0173, -99.5647

From Brookdale, MB. (Jct #353 & #464 hwy), 3.6kms south on #464 hwy to Lane #68147 (east side)

From (Jct #1 & #464 hwy) Camp Hughes Corner, 14.7kms north on #464 hwy to Lane #68147 (east side)

Note: All items are to be picked up and removed from sale site by May 15th, 2022. Please call ahead to be sure Don is there to help load and release items. DON MITCHELL 204-729-1685 (Call or Text) dkmitche@xplornet.com



GPS SYSTEMS:

- Trimble EZ-Guide 250, EZ-Steer wheel motor, EZ-Steer Terrain Compensating, Dome, coverage activation & steering activation pedals
- EZ-Guide 250, Dome, coverage activation switch pedal

TRACTORS:

- 1976 Versatile 750 Series 2 4WD tractor 220hp w/480/80R38 duals (outside 4 are 95% plus), Atom Jet Aux hyd kit with in-cab controls, 3 remote hyd plus Atom Jet to make 4th, return line, standard trans, 9404 hours showing, New batteries October 2021, s/n090088 (Fresh engine oil and filters - fuel filters - coolant filters)
- 1983 Deutz-Fahr DX 160 2WD tractor 150hp w/20.8-38 duals, wheel weight kit, 11.00-16L front rubber, front weight carrier (no weights), 24-speed power shift trans with creeper gears, 2-remote hyd, 1000 pto, saddle style aux fuel tank, cab heat and air (air used summer 2021), 11,552 hours showing, s/n7824-0175 (Fresh engine oil and filters)

HARVEST:

- 1998 26' MF 220 sp swather w/pick-up reel, single knife drive, Roto-Shears both ends, hitch, 21.5L-16.1SL drive rubber, 1882 hours showing, s/nG220160 (Fresh engine oil and filters)
- 1989 21' JD 590 pt swather w/batt reel, 540 pto, Gatorman crop lifters, rubber slat canvas, some new canvas roller bearings, s/n824077
- 8' Farmking metal roller, s/n9361232
- 6' Blanchard metal roller
- 1995 JD 9600 sp combine w/JD 914 pick-up header, Seed Saver, long auger, Crary Big Top hopper ext, folding auger in grain tank, Calmar poly spout, JD top sieve, Harvest Services poly bottom sieve, Redecop fine cut chopper, FS hyd spreader, 30.5L-32 drive rubber, 14.9-24 rear rubber, 1409 threshing hours showing, 2013 engine hours showing (post changed by previous owner actual hours unknown), Put through JD Service Guard Inspection October 2021 (0 hours on unit since work was done), s/n662110 (Fresh engine oil and filters)
- 24' JD 924 straight header w/batt reel, single knife drive, 4-wheel wagon transport, s/n626591

TRUCKS:

- 1980 IH S1700 S/A grain truck w/15'x8'x52" grain box, roll tarp, 10.00-20 rubber, 404 IH gas engine, 5+2 trans, 103,715 showing, SAFETIED, VIN# AA172KCA18525
- 1975 Chevy C65 S/A grain truck w/15'x8'x43" Cancade grain box, roll tarp, 366 gas engine, 5+2 trans, 87,948

showing, (Runs & Drives), VIN# CCE665V125042

HAYING EQUIPMENT:

- 1995 16' MacDon 5000 haybine w/steel over steel crimp rolls, 1000 pto pump, s/n96165
- Jiffy Haysaver 3PT 10-wheel V-Rake
- 3-wheel 3PT hay rake
- Vicon 2-wheel 3PT rake, s/n5800302259
- NH 55 hay rake
- 1977 JD 336 sq baler w/hyd tension, 1/4 turn chute, 540 pto, always shedded, 1 new tire, s/n348945E
- Hesston 565A rd baler w/540 pto, hyd tie arms, Auto-Matic monitor, 8186 bales showing, always shedded, s/n02272
- 30x10 wagon bus frame wood deck bale rack w/single tandem rear axle, steering axle front, 8.25-20 rubber

LIVESTOCK RELATED:

- 1979 NH 357 mixmill w/power bale feed, 3/4" & 5/16 screens, hammers on last turn, mineral hopper, 540 pto, always shedded, s/n510282
- Newidea 3626 s/a manure spreader w/540 pto, dbl beaters, single floor chain, NEW Baltic Birch wood floor (never used since new floor), s/n243521

SEED & TILLAGE:

- 60' Summers Mid Harrow, s/nT0275
- 70' Summers hyd harrows w/Good tines, s/n92065
- 31' Morris Magnum CP-725 tillage w/bolt-on spikes, 12" spacing, 3-bar harrows, sells with 4 spare lift cylinders, s/n16063
- 30' Bourgault Commander 26-30 tillage w/bolt-on sweeps, 8" spacing, 3-bar Bourgault harrows, s/n3054
- 20' tandem disc w/notched front & smooth backscraper kit
- 36' Bourgault 8800 air seeder w/Bourgault 2155 air cart, 8" spacing, single chute, 375lbs trips, 3/4" Chrome Openers (knock-on) only done approx. 1000 acres in light land, poly packers, air cart has hyd calibration conversion, cameras in both tanks, camera on drive gears, extra dbl flight metering auger, rear tank hitch, Vansco 132 monitor, Vansco dual clutch switch, Vansco 101 auger alarm, Drill s/n821960, Tank s/n7425
- 21' CCIL Noble 2200 hoe press drill w/dbl chute option, Canola gears, factory self-transport, 8" spacing, (hasn't been used in 10 years but shafts are loose) always covered with tarps over seed boxes
- Raven NH3 Super Cooler w/Raven 440 variable rate control box (enough for approx 40')
- 90' Brandt QF 1500 pt sprayer w/1000-gal poly tank, Chem Handler I system, hyd & 1000 pto pump,

Raven 440 rate controller, all new rubber on this unit (Firestone 16.5L-16.1 main frame) almost all hyd hoses are near new, Double Wilmar nozzle bodies with Tee-Jet adapters (5-gal Combo Jet & 10-gal AIXR-11002 nozzles), also comes with a complete set of ER80-03 Combo-Jet nozzles, s/n47376

- 84' Brandt HC Quick Fold pt sprayer w/1000 US gal poly tank, Raven 440 rate controller, chemical mix tank, fresh water tank, hyd pump & 1000 pto pump, Goodyear 16.5L-16.1SL rubber (rubber near new), s/n27424A
- Handler I chemical system 2"

GRAIN HANDLING:

- buhler/Farmking 1060 PTO swing hopper auger w/single hopper auger, 540 pto, Never-Spill poly spout with alarm, s/n21300813
- Farmking 1050 PTO swing hopper auger w/single hopper auger, 540 pto, Mechanical hopper drive, poly spout, s/n9100113
- Sakundiak HD7-1200 auger w/Meridian 4-wheel mover, 18hp Kohler Command Pro engine, hyd winch, Wheat Heart bin sweep with clean-up shields, s/n70391
- Sakundiak HD8-1600 PTO auger w/pto drive, s/n31725
- Sakundiak HD7-37 auger w/13hp Honda engine, poly hopper, (used for seed treating), s/n6846
- FieldKing (Brandt) 6x30 auger w/3hp 1ph 220-volt electric motor, regular and slow speed pulleys
- MC 600-B 10 propane grain dryer w/pto fan, 1ph - 240-volt, wheels & hubs, has roof cover built over it, hasn't been used in 4-5 years, (Not Certified), s/n16078

RING #2 TIMED SALE

Details & list of all other items not listed here can be found on www.fraserauction.com under Ring #2 for this sale

See www.fraserauction.com for complete listing

FRASER AUCTION SERVICE LTD.

Brandon, MB Auctioneer: Scott Campbell / Jesse Campbell

P: 204-727-2001 F: 204-729-9912 TF: 1-800-483-5856 E: office@fraserauction.com www.fraserauction.com

Licensed and bonded. P.L. License #918093. Member of M.A.A., S.A.A., A.A.A., A.A.C.

NOTE: Cheques of \$50,000 or more must be accompanied by bank letter of good standing. For more information on this please call Fraser Auction 204-727-2001

Not responsible for errors in description. Subject to additions and or deletions. Property owners and Fraser Auction Service not responsible for any accidents. GST & PST where applicable.

TERMS: Visa, MasterCard, Debit, Cash, E-Transfer, Bank Wire Transfer, or cheque. Sale conducted by FRASER AUCTION SERVICE 1-800-483-5856 www.fraserauction.com



BRAD & BRENDA ROBIN

ONLINE RETIREMENT FARM AUCTION

INGLIS, MB. | TUESDAY, APRIL 26TH | 12:00PM

For more information or to schedule viewing of equipment contact seller:
Brad & Brenda Robin 204-937-7578 (Call or Text)

ONLINE ONLY PRE-BID LIVE VIRTUAL www.fraserauction.com



DIRECTIONS: GPS: 51.0268,-101.3510

From Inglis, MB. (Jct #83 & #366), 10.5kms north on #83 hwy to sale site (east side)

From Russell, MB. (Jct #16 & #83), 30.5kms north on #83 hwy to sale site (east side)

From Roblin, MB. (Jct #83 & #5), 22.6kms south on #83 hwy to sale site (east side)



TRACTORS:

- 2009 NH T9020 4wd tractor 335hp w/Titan 520/85R42 duals (only 2 seasons old), 4 remote hyd, return line, pwr shift trans with shuttle, Trimble Guidance, FM 750 monitor, Trimble steering wheel, 3685 hours showing, s/nZ8F204521
- 1988 Versatile 846 Designation 6 4wd tractor 230hp w/Firestone 18.4-38 duals, Big 1000 pto, 4 remote hyd, return line, 12 speed pwr shift trans, 9290 hours showing, s/n331081
- 1977 White Field Boss 2-105 2wd tractor 116hp w/Leon loader, 2 prong bale fork, 3 remote hyd, 540 pto, 20.8-38 singles (newer), 11.00-16 4 rib front rubber, Direct/Over/Under standard trans, 9926 hours showing, s/n277829-406

HARVEST:

- 2009 Westward M100 sp swather w/30' MacDon D60-S header, pickup reel, Fore/Aft, header tilt, gauge wheels, newer BKT 18.4-26 drive rubber, 1576 engine & 1170 header hours showing, s/n190170
- 10' Farm King metal swath roller
- Unverferth 7250 grain cart w/pto drive, 17" auger, roll tarp, Firestone 30.5L32 rubber, light kit, s/nB21-180-120
- 2004 JD 9660 STS Bullet Rotor combine w/JD 914P header, Michael's Seed Saver, Maurer hopper topper, long auger, fine cut chopper, 800/65R32 drive rubber, 18.4-26 rear rubber, 2124 threshing & 3010 engine hours showing, single point hookup, s/nH09660S706306 (This unit was put through a JD GREEN LIGHT inspection by JD mechanic from Hillcrest Acres shop. Picture of work order in photos.)
- 2004 30' MacDon 973 Harvest Header draper header w/split pick-up reel, single knife drive, self-transport, JD 60 Series adapter, single point hookup, s/n159609
- 30' Baer MFG header transport w/front steering axle, 15" rubber

SEED & TILLAGE:

- 34' Bourgault 5710 airdrill w/Bourgault 3225 dbl compartment air-cart, single chute, 9.8" spacing, 3/4" carbide tip openers, 3" rubber over steel packers, HP 591 monitor, fan switch, Drill s/nAH103726, Cart s/nAS103726
- 70' Delmar 5500M Mid-Harrow, s/n55701312
- 14' Kellough 210 off-set disc w/notched front

and back, scrapers, s/nKB812093-24

- Degelman R570S ground drive rotary stone picker w/NO clutch, s/n17758

TRUCKS & TRAILERS:

- 1994 Ford F250 XLT Reg cab 4x4, pwr windows, pwr locks, 7.3 liter Turbo dsl engine Auto trans 8' box 16" rubber farm ball style hitch plate in box 339, 775 showing VIN# 1FTHF26K5RNB83790
- 1992 Ford F150 XLT Super Cab Ext Cab 4x4 truck w/mesh tailgate, 15" rubber, Auto trans, 5.8 litre EFI gas engine, pwr windows, pwr locks, 201,807 showing, VIN# 1FTEX14H5NKA16133
- 2007 IH 9200i tandem axle grain truck w/20' Cancade box, roll tarp, remote hoist, remote tailgate, rear hoist controls, 11R22.5 rubber, Cummins ISX 435 engine, Eaton Fuller Auto Shift Trans, 12,000 lbs front and 40,000 lbs rears, pwr windows and locks, 694,536 showing, SAFETIED, VIN# 2HSCEAPR67C455230
- 1972 Chev C50 s/a grain truck w/15' Cancade box, 350 gas engine, 4+2 trans, 71,594 showing, 9.00-20 rubber, VIN# CCE532V146923
- 1969 GMC 960 s/a grain truck w/14' box, 360 gas engine, 5+2 trans, 77,322 showing, 9.00-20 rubber, VIN# C9E639P014906
- 24' t/a 5th wheel flat deck trailer (deck-over style) w/farm ball hitch, 16" rubber, NEW Fur plank floor done December 2021, VIN# N/A
- 1993 16' t/a bumper pull flat deck trailer w/fold up ramps, wood salt shield, 18-14.5LT rubber, VIN# 000486

GRAIN HANDLING:

- Westfield MK100-61 pto swing hopper auger w/single auger in hopper, 540 pto, full bin sensor, poly flex spout, s/n243576
- Meridian HD8-39 auger w/Meridian 4-wheel mover pkg, Kohler Command Pro 23hp EFI engine, 2 electric clutch switches, light kit, reversible gearbox, Super Edge flighting, hyd lift winch, poly flex spout, s/n36-10078
- Westfield 8-31 auger w/hyd drive, s/n22301
- Truck backup guide
- Rem 2700 grain vac w/tri-fold auger, 1000 pto, metal flex hose kit, cleanup nossle, 112 hours showing, s/n210152

GRAIN BINS & FANS:

- 2800-bus Goebel bin on PSP hopper cone w/dbl skid, mounted ladder, lid opener (Bin 13)
- 2800-bus Goebel bin on hopper w/dbl skid, mounted ladder, lid opener (Bin 12)
- 2700-bus Westeel Rosco on hopper cone w/dbl skid, mounted ladder, lid opener (Bin 11)
- 3000-bus (80-ton) Meridian hopper bin epoxy coated w/single skid, 3 sight glasses, mounted ladder, lid opener (Bin 10)
- 3000-bus (80-ton) Westeel Magnum-FN hopper bin epoxy coated w/3 sight glasses, dbl skid, mounted ladder, lid opener (Bin 9)
- 2700-bus Westor bin on hopper cone w/single skid, aeration cross, Grain Guard 3hp fan, mounted ladder, lid opener (Bin 8)
- 2700-bus Westeel bin on Peloquin hopper w/dbl skid, aeration cross, Grain Guard 3hp fan, mounted ladder, lid opener (Bin 7)
- 2700-bus Westeel bin on Peloquin hopper w/dbl skid, aeration cross, Grain Guard 3hp fan, mounted ladder, lid opener (Bin 6)
- 2800-bus Goebel bin on hopper cone w/dbl skid, aeration rocket, Grain Guard 3hp fan, mounted ladder, lid opener (Bin 5)
- 3000-bus Westeel bin on Westeel hopper cone w/triple skid, aeration rocket, Grain Guard 3hp fan, opener, roof vent, mounted ladder, Bin s/n 65-16-00051, Fan s/n2014FC10729 (Bin 4)
- 3000-bus Westeel bin on Westeel hopper cone w/triple skid, aeration rocket, Grain Guard 3hp fan, opener, roof vent, mounted ladder, Bin s/n65-15-03260, Fan s/n2014FC10730 (Bin 3)
- 3000-bus Westeel bin on Westeel Elite hopper cone w/triple skid, aeration rocket, Grain Guard 3hp fan, opener, roof vent, mounted ladder, Bin s/n65-17-01895 (Bin 2)
- 3000-bus Westeel bin on Westeel Elite hopper cone w/triple skid, aeration rocket, Grain Guard 3hp fan, opener, roof vent, mounted ladder, Bin s/n65-17-02417 (Bin 1)

OTHER ITEMS:

- 2001 EZEE-ON 2400 trailer style post pounder Fully hyd w/540 PTO pump, Post cradle, s/n45241
- 1000-gal Westeel fuel tank w/Fill Rite FR711V 115 volt pump, Fill-Rite 900 Series meter, s/n67-12-10302

See www.fraserauction.com for complete listing

FRASER AUCTION SERVICE LTD.

Brandon, MB Auctioneer: Scott Campbell / Jesse Campbell

P: 204-727-2001 F: 204-729-9912 TF: 1-800-483-5856 E: office@fraserauction.com www.fraserauction.com

Licensed and bonded. P.L. License #918093. Member of M.A.A., S.A.A., A.A.A., A.A.C.

NOTE: Cheques of \$50,000 or more must be accompanied by bank letter of good standing. For more information on this please call Fraser Auction 204-727-2001

Not responsible for errors in description. Subject to additions and or deletions. Property owners and Fraser Auction Service not responsible for any accidents. GST & PST where applicable.

TERMS: Visa, MasterCard, Debit, Cash, E-Transfer, Bank Wire Transfer, or cheque. Sale conducted by FRASER AUCTION SERVICE 1-800-483-5856 www.fraserauction.com



SUNDANCE VALLEY RANCH

MARCEL & JEAN FOUILLARD

ONLINE RETIREMENT FARM AUCTION

ST. LAZARE, MB. | WEDNESDAY, APRIL 27TH | 12:00PM

For more information or to schedule viewing of equipment contact seller:
Marcel Fouillard 306-434-6980 (Call or Text) or 204-683-2208 (Home)

ONLINE ONLY PRE-BID LIVE VIRTUAL www.fraserauction.com



DIRECTIONS: GPS: 50.4020, -101.2737

From St. Lazare, MB., South of Village on #41 hwy across Assiniboine River bridge. Just after crossing bridge, you will come to Fort Ellice Road.
6.5kms south on Fort Ellice Road to Lane #95-029 (left side)



TRACTORS:

- 2015 JD 6140M MFWD tractor 140hp w/JD H360 self levelling loader, bucket, grapple, joystick controls, single point hookup, 540/65R28 Firestone front rubber, 650/65R38 Firestone rear rubber, inside and outside wheel weight pkg, 3 remote hyd, 3PT, 3PT hitch controls on fenders, dual PTO, 20 speed power shift, shuttle, 1053 hours showing, s/n811755
- 2002 NH TV 140 Bi-Directional tractor 140hp w/NH 7614 loader, 8' quick attach bucket, Moulson Welding HD 2 prong quick attach bale fork, foot controls for loader, 3PT (loader end), draw bar (loader end), 540 PTO (loader end), 3 remote hyd (loader end), draw bar (engine end), 2 remote hyd (engine end), 1000 PTO (engine end), weight pkg with (34) 67lbs suitcase weights (engine end), Goodyear 18.4R34 rubber 90%, 5199 hours showing, s/nRVS019459

HAYING & FEED PROCESSING:

- 2000 12' NH 499 hydro swing haybine w/rubber on rubber crimps, 540 PTO, used only 200 acres per year, 11L-14SL rubber, s/n644739
- 2014 JD 569 Mega Wide rd baler w/cover edge net wrap, dual tie arms, 1000 PTO, Big Titan 21.5L-16.1SL rubber, 2931 bales on monitor,

5'x6' bales, s/n403357, (always shedded)

- Highline Bale Pro 7000HD bale processor w/LH discharge, 1000 PTO, always shedded during summer, s/nBPHD002704

TRUCK & TRAILERS:

- 2014 Dodge Ram 2500 HD 4x4 4-door w/Cummins Turbo DSL engine, 6 speed standard trans, 17" rubber, cloth interior, 6 passenger seating, power windows and locks, DEF delete done, 156,042 showing, SAFETIED, VIN# 3C6UR5CL7EG299202
- 2013 20' Barrett 5th wheel Aluminum stock trailer w/tandem axle, single partition, 16" rims, 7000lbs axles, VIN# 1B9P20203D1014083
- 2012 24' Precision Trailers 5th wheel High Boy flat deck trailer w/tandem axle, 16" rubber, double jacks on front, 7,000lbs axles, VIN# 2P9FG829XDP078590

UTV:

- Yamaha Viking 700cc UTV side by side 4x4 w/bench seat, dump box, quarter doors, 35,000 showing, rear hitch, winch, full front windshield and roof, 26-9.00-12 Mudlite front rubber, 26-12.00-12 Mudlite rear rubber

SEED & TILLAGE:

- 26' Morris Challenger L-240 field cultivator w/3 bar harrows, Knock on sweeps, s/n5948
- 60' Inland harrow packer bar w/P20 coils, walking beam tandem axles on mainframe, s/n334X

CATTLE HANDLING:

- Pearson squeeze chute with palp cage
- 16' Pearson adjustable alley with back-up stopper
- Homemade Chute w/Pearson headgate

OTHER ITEMS:

- 2-wheel cart for miniature horse with set of single driving harness

RING #2 TIMED SALE

Details & list of all other items not listed here can be found on www.fraserauction.com under Ring #2 for this sale



See www.fraserauction.com for complete listing

FRASER AUCTION SERVICE LTD.

Brandon, MB Auctioneer: Scott Campbell / Jesse Campbell

P: 204-727-2001 F: 204-729-9912 TF: 1-800-483-5856 E: office@fraserauction.com www.fraserauction.com

Licensed and bonded. P.L. License #918093. Member of M.A.A., S.A.A., A.A.A., A.A.C.

NOTE: Cheques of \$50,000 or more must be accompanied by bank letter of good standing. For more information on this please call Fraser Auction 204-727-2001

Not responsible for errors in description. Subject to additions and or deletions. Property owners and Fraser Auction Service not responsible for any accidents. GST & PST where applicable.

TERMS: Visa, MasterCard, Debit, Cash, E-Transfer, Bank Wire Transfer, or cheque. Sale conducted by FRASER AUCTION SERVICE 1-800-483-5856 www.fraserauction.com



ESTATE OF JIM KUNKA

ONLINE RETIREMENT FARM AUCTION

SOURIS, MB. | THURSDAY, APRIL 28TH | 12:00PM

For more information or to schedule viewing of equipment contact seller:
Randy Kurtenbach 204-901-3180 (Call or Text) rbt@mymts.net

ONLINE ONLY PRE-BID LIVE VIRTUAL www.fraserauction.com



DIRECTIONS: GPS: 49.5317,-100.2351

From Souris, MB. (Jct #2 & #22 hwy) 11kms south on #22 hwy to Rd 36N, 0.6kms east on Rd 36N to Lane #122128 (south side)

From Elgin, MB. (Jct #23 & #22 hwy) 9.8kms north on #22 hwy to Rd 36N, 0.6kms east on Rd 36N to Lane #122128 (south side)



TRACTORS:

- 1990 JD 8560 4WD tractor 235hp w/18.4R38 duals, 4-remote hyd, Quad range trans, 4174hrs showing, s/n001888 (Always shedded)
- 1982 JD 4640 2WD tractor 172hp w/JD 158 loader with bucket, 20.8-38 duals, 4-remote hyd, 1000 PTO, Quad Range trans, 6515 Original hours showing, s/n026818 (Always shedded)

HARVEST:

- 22' New Noble 722 sp swather w/UII pick-up reel, Dsl engine, 1596hrs showing, s/n72201-92006 (Always shedded)
- 8' Farm King metal swath roller, s/n9360532
- 1994 JD 9600 sp combine w/JD 914 pick-up, long auger, JD sieves, std chopper, 1136 sep hours showing, 1581 engine hours showing, s/n657767 (Always shedded)

TRUCKS:

- 1980 Ford F700 s/a grain truck w/15' B+H, Slide back tarp, 370 gas engine, 5+2 trans, 9.00-20 rubber, 46,696 showing, VIN #F70HVG9289
- 1979 GMC 7000 Tag Axle grain truck w/20' B+H, Slide back tarp, 427 V8 gas engine, 5+4 trans, 10.00-20 rubber, 11,870 showing, VIN #T17DE9V583890
- 1958 GMC 9400 s/a grain truck w/12' Wooden grain box with stock racks, 55,682 Original miles showing, VIN #89443600570 (No Spark not running)

1/2 TON TRUCKS:

- 1998 Chev Z71 Silverado 1500 1/2 ton Ext Cab 4x4 truck w/Leather Interior, V8 gas engine, Auto Trans, 178,840 showing, VIN #2GCEK19R3W1268464
- 1982 Chev Custom Deluxe 10 2WD truck w/V6 gas engine, 3 in the tree trans, 47,541 showing, VIN #2GCCC14D3C1111402

SEED & TILLAGE:

- JD 5-bottom plow w/20" shears
- 34' CaselH 5600 chisel plow w/3-bar Summers harrows, Incomplete Continental NH3 kit
- 36' CaselH 4900 chisel plow w/3-bar Summers harrows, Bolt on sweeps, s/n0065637
- 22' MF 1867 tandem disc w/notched discs front, smooth discs back, spring assist manual flip up wings, s/n504348
- 80' Herman hyd harrows, s/nT0180
- 30' JD 9350 DD Press drills w/Factory Self-Transport, s/n032842 & 033007 & 032843, Low Acre unit, (Always shedded)

GRAIN BINS:

- Approx. 4000-bushel Grain Max hopper bin w/Aeration rocket, 3hp Gold'n Air fan, 16ft diameter 4 ring, On skid, Mounted ladder, Lid Opener, Bin s/n15124W, Fan s/nC9531133
- Approx. 4000-bushel Friesen hopper bottom bin, On skid, 16ft diameter 4 ring w/3 site glasses, mounted ladder, Lid Opener, s/n11606W
- Approx. 2100-bus Lode-King hopper bottom

GRAIN HANDLING:

- buhler Farm King 10x60 PTO swing hopper auger w/dbl augers in hopper, s/n217500088
- Sakundiak HD8-1600 PTO auger, s/n31695
- Sakundiak HD7-1200 auger w/20hp Kohler Command Pro engine, s/n65357
- Sakundiak HD7-1200 auger w/16hp Kohler Magnum engine (Needs carb kit), s/n45994

LAWN TRACTORS:

- Husqvarna YTH 24V48 lawn tractor w/Hydrostatic drive, 48in deck, 24hp engine, 85hrs showing, s/n012219A007199
- JD 318 lawn tractor w/Hydrostatic drive, 50in deck, Onan engine, Front hyd, 850 hrs showing, s/n102623

RING #2 TIMED SALE

Details & list of all other items not listed here can be found on www.fraserauction.com under Ring #2 for this sale



See www.fraserauction.com for complete listing

FRASER AUCTION SERVICE LTD.

Brandon, MB Auctioneer: Scott Campbell / Jesse Campbell

P: 204-727-2001 F: 204-729-9912 TF: 1-800-483-5856 E: office@fraserauction.com www.fraserauction.com

Licensed and bonded. P.L. License #918093. Member of M.A.A., S.A.A., A.A.A., A.A.C.

NOTE: Cheques of \$50,000 or more must be accompanied by bank letter of good standing. For more information on this please call Fraser Auction 204-727-2001

Not responsible for errors in description. Subject to additions and or deletions. Property owners and Fraser Auction Service not responsible for any accidents. GST & PST where applicable.

TERMS: Visa, MasterCard, Debit, Cash, E-Transfer, Bank Wire Transfer, or cheque. Sale conducted by FRASER AUCTION SERVICE 1-800-483-5856 www.fraserauction.com



ONLINE TIMED ONLY
www.fraserauction.com

10TH ANNUAL MANITOBA TIMED BEE AUCTION

LOTS START TO CLOSE | THURSDAY, MAY 26TH

ONLINE TIMED ONLY www.fraserauction.com



NOTE: This sale will be held as a **TIMED ON-LINE ONLY** Auction
@ www.fraserauction.com

Buyers wanting to see the bees in person will need to do so prior to sale.

Seller contact information will be listed on our website closer to sale date so you can contact them for directions to hive yards and info about their bees.

CONSIGN NOW TO BOOK YOUR SALE ORDER

Sale conducted by FRASER AUCTION SERVICE 1-800-483-5856



**It's never too
EARLY TO START
PLANNING
*your farm sale.***

**These April 2023
dates are already booked.
Call us now to discuss
booking your 2023 date!**

FRASER AUCTION SERVICES

Phone 204-727-2001 Toll Free 1-800-483-5856

Email office@fraserauction.com



ONLINE TIMED ONLY
www.fraserauction.com

CONSIGN NOW!

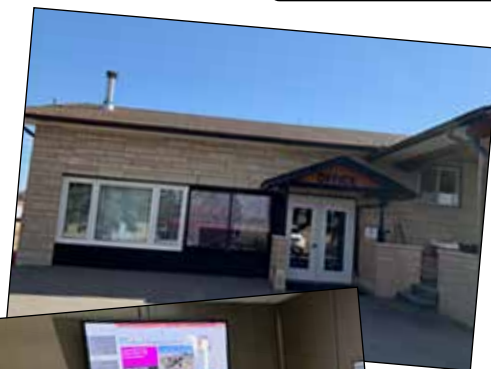
ANNUAL PRE-HAYING SALE AT FRASER AUCTION YARD

BRANDON, MB. | SATURDAY, JUNE 11TH | 9:00am

ONLINE TIMED ONLY www.fraserauction.com

And on the eight day God looked down at his creation
and said, I need someone to be there when my people need them
someone who will get up early and stay up late
someone who can be a counselor, photographer, event coordinator,
truck driver, mover, writer, storyteller, visionary.
Someone who can conduct business in a tailored suit or a cowboy hat and boots.
Someone who can sell cars, or cows on Tuesday and Grandma's Estate on Saturday.
Someone who can recycle old memories one at a time.
Someone who will be HONEST AND FAIR TO ALL.

So God Made an
AUCTIONEER



We see a **HUGE** selection of lawn and garden, ATVs, trucks, trailers, industrial and farm equipment. Our consignment sales are a place second to none to market your equipment, and or look for that particular piece to add to your own equipment line up. Whether you are a buyer or a seller at Fraser Auction we take your business very seriously. We thank you for choosing Fraser Auction Service Ltd. as your auctioneers.

Daily updates available at www.fraserauction.com

FRASER AUCTION SERVICE LTD.

Brandon, MB Auctioneer: Scott Campbell / Jesse Campbell

P: 204-727-2001 F: 204-729-9912 TF: 1-800-483-5856 E: office@fraserauction.com www.fraserauction.com

Licensed and bonded. P.L. License #918093. Member of M.A.A., S.A.A., A.A.A., A.A.C.

NOTE: Cheques of \$50,000 or more must be accompanied by bank letter of good standing. For more information on this please call Fraser Auction 204-727-2001
Not responsible for errors in description. Subject to additions and or deletions. Property owners and Fraser Auction Service not responsible for any accidents. GST & PST where applicable.
TERMS: Visa, MasterCard, Debit, Cash, E-Transfer, Bank Wire Transfer, or cheque. Sale conducted by FRASER AUCTION SERVICE 1-800-483-5856 www.fraserauction.com

Selling your farm?

Do you know if you're going to be ok?



We specialize in:

Retirement income planning • Succession planning • Estate planning



Amber Storey, Kevin Martin, Kristie Miller

Branstone Financial Strategies Inc.

Private Wealth Management
Quadrus Investment Services Ltd.
FBC Financial & Estate Planning Services

4A - 457 - 9th Street
Brandon, Manitoba R7A 1K2

Telephone: 204-578-5500

info@branstone.ca | www.branstone.ca



BRANSTONE
FINANCIAL STRATEGIES

Insurance products, including segregated fund policies, are offered through Branstone Financial Strategies Inc., and Kevin Martin, Investment Representative, offers mutual funds and referral arrangements through Quadrus Investment Services Ltd.

Quadrus Investment Services Ltd. and design are trademarks of Quadrus Investment Services Ltd. Used with permission.

66-365471-02/22

**TRULY LOCALLY OWNED
AND OPERATED**

FULL TILT

TOWING & TRANSPORT LTD
24 HOUR SERVICE



**FOR ALL YOUR TOWING
AND TRANSPORT NEEDS!**

**LITE, MEDIUM &
HEAVY DUTY
TOWING & RECOVERY**



Agricultural
Construction

Moving
Forestry

Oil Field
Road Side Assistance

Boosting/Lock Out
Services

24 Hour Service

204-725-6055

dispatch@fulltilttowing.ca



Who is Fraser Auction Service Ltd?

Fraser Auction Service Ltd was founded by Stan & Beatrice Fraser in 1979. In 2001 the business was purchased by Scott & Lori Campbell, who along with their sons Jesse & Kade continue to operate it to this day. We are family owned, family operated, just like your farm. We pride ourselves in working personally with you on your sale from start to finish, developing friendships lasting far beyond the auction day.

We strive to provide our buyers and sellers with an enjoyable auction experience. With all the new online sales and the fast-changing auction world, we strive to stay at the head of the industry with updated websites and bidding platforms second to none. Have a question? Just ask, we are here to help.

We pride ourselves in providing personal, professional service, while developing relationships with both buyers and sellers. Your success is our success!

Our award winning auctioneers ensure you an exciting auction event. Even in this time of online auctions you will still be bidding to the chant of the auctioneers.

Some of our Auctioneers' accomplishments:

Scott Campbell (2x Past President of Manitoba Auctioneers Association)
2000 Portage Exhibition Champion Auctioneer
2010 Canadian Livestock Rookie Champion Auctioneer
2011 Canadian Young Farmers Champion Auctioneer
2013 Yorkton Exhibition Champion Auctioneer
2013 Man/Sask Livestock Champion Auctioneer

Jesse Campbell (Current President of Manitoba Auctioneers Association)
2018 Alberta Vern Scown Memorial Champion Auctioneer
2019 Man/Sask Livestock Rookie Champion Auctioneer
2020 Canadian All Round Auction Championships 3rd Place finish
2021 No Borders Livestock Rookie Championship Auctioneer

We Truly love what we do!!!

Why use Fraser Auction Service Ltd?

- We have conducted thousands of auction sales throughout the prairies.
- Full-service auction company including appraisals and evaluations.
- 12-acre sales yard just north of the City of Brandon, MB where we hold huge multi consignor equipment and vehicle auctions 3 times yearly in June – August – October.
- State of the art modern online bidding platforms utilizing Live Virtual Pre-Bid, Hybrid & Timed Auction events. Not sure which style of auction is right for your sale? We are here to help. We can explain the many different benefits of all styles of auctions. After all auctions are our life not our hobby!
- Our bidder database is substantial, with specialized advertising programs featuring modern Email & Digital marketing options alongside more tradition print advertising. Our state-of-the-art website gives interested buyers up to the minute details, videos, pictures, and information about upcoming auctions 24 hours a day, 7 days a week. All bidding takes place on the same website, so buyers aren't left having to load multiple sites to place their bids. Buyers can also follow us on Facebook, Twitter, YouTube, and Instagram.


Our Reputation - Is your Guarantee!


Phone: 204-727-2001 or 1-800-483-5856

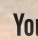
Fax: 204-729-9912


Email: office@fraserauction.com

www.fraserauction.com

 Fraser Auction Service Ltd.

 @fraserauction

 Fraser Auction

 fraserauction

NOW BOOKING 2023 AUCTION SALES!

Contact us to be in our next Spring Auction Catalogue.

To see more sales, more information, and start bidding visit www.fraserauction.com