



2020 SALE CATALOGUE



www.fraserauction.com

Thank you for supporting your locally-owned business!



Light Medium & Heavy Towing
Local & Long Distance Hauling

- Hot Shot Service
- Lockouts
- Tire Service
- Gas & Diesel Delivery
- 12 & 24V Boosting
- Car Carrier
- Winching & Recovery



*"We Specialize In
Customer Satisfaction"*



AIR RIDE - TILT DECK DIVISION

- 55 TON Sliding Axle Tilt Trailer
 - Tandem-Axle Tilt-Deck
 - Overdimensional Loads
 - Office Trailer Relocation
 - Low Bed Service
- Transportation Of...
- Machinery & Equipment
 - Skid Shacks & Containers



CUSTOM HAULING FLATDECK SERVICE SPECIALTY SERVICE



Brandon
940 Douglas St
R7A 7B2

728-2580

1-888-728-2580

Fax Number: 728-2522

email: dispatch@acceltowing.ca

www.acceltowing.ca

**24 Hour
Service**

**"Brandon's
Best!"**



FOR VEHICLE & PERSONAL ARTICLE RELEASES - OFFICE HOURS MON-FRI 8:30AM - 5PM (CLOSED HOLIDAYS)

At Fraser Auction Service Ltd. we want to make bidding on the items you want **EASY** and **ENJOYABLE!**

Of course we always want to see you at our sales, but for any reason you are unable to attend that day:

"That's not a problem"

You can still bid on the item you have had your eye on.

HOW DO YOU ASK?

Well, here are 3 ways we can help you:

1. LIVE INTERACTIVE BIDDING FROM YOUR COMPUTER, SMART PHONE, OR TABLET

Select sales are broadcast on the internet with live interactive bidding through our website www.fraserauction.com. If you choose this method, you can hear and watch the live sale and bid right along with the people who are right there at the sale site. To do this, simply go to our website and click on the button "Online Sales". This will give you a list of the sales that are available for this type of interactive bidding. Choose the sale you want to bid at and log in. The first time you log into our live bidding site you will be asked to register or sign up for an account and submit the required information to create your user name and password for your private account and online bidding number. This process will only need to be done the first time you sign up for one of our sales each season. Anytime you want to join a live broadcast sale after that, just simply log in with your user name and password and you are in and ready to bid. **NOTE:** Please keep in mind that it does take some time to have your account approved, so be sure to sign up well in advance of the sale to be sure you are ready to click that BID button. If you plan to bid \$50,000 or more at the sale, you will be asked to send our office a letter of good standing from your financial institution to ensure the credibility of the account. Just simply call your bank representative and ask them to fax (204-729-9912) or email (office@fraserauction.com) along with a quick note stating "Your personal name and/or company name, the date, their name, position, contact information and that you are a customer in good standing and have funds in place to cover the purchases you plan to make. Once again, this only needs to be done the first time you register for an online account with us. The letter will be put on file in our office and you are good to go for that season. Just a note of mention, that we have an app that will allow you to bid right on your smart phone or tablet if you are not close to a computer. "Just be sure you have good data service where you will be when using your phone to bid". If you are a successful bidder while taking part in the sale online, we ask you to contact our office (204-727-2001) at the conclusion of the sale to arrange payment of your purchase or purchases. Hey, it's that easy! Your next Fraser Auction experience is just a few clicks away! Online bidding fees do apply. See full details when registering.

2. BID OVER THE PHONE WITH A FRASER AUCTION REPRESENTATIVE DURING THE SALE:

Simply call our office prior to the sale "24 hours prior is preferred" (204-727-2001) and have them fax or email you a phone bid form or go to our website and click the Absentee bidding button and download and print a phone bid form. Fill out the required information along with a detailed description of the item or items that you want to bid on, and the phone number that you can be reached at during the sale. Send it back to our office and you will be registered to bid. You can listen to the sale going on and place your bids with our rep. If you are a successful bidder, just call our office at the conclusion of the sale and arrange payment. It can't get much easier than that! Clerical processing fees do apply. See full details on phone bidding form.

3. PROXY BID WITH A FRASER AUCTION ORDER BUYER:

Maybe you will be out of phone service, in a meeting, or just too busy with business the day of the sale. "Or in the boat fishing, if you're lucky". No problem. We can still get you involved in the auction. Simply call our office prior to the sale "24 hours prior is preferred" (204-727-2001) and have them fax or email you an absentee bid form or go to our website and click the Absentee Bidding button and download and print a bid form. Fill out the required information along with a detailed description of the item or items that you want to bid on, and the maximum dollar amount that you are willing to bid on each item, send it back to our office and you will be registered to bid. One of our order buyers will handle your bidding on your behalf. We assure that they will treat your bid as if it were their own money and get the item or items at the best price possible for you. If the bidding stops under your max, you will be the buyer. If not, we thank you for your bidding and you will be out on that item. If you are a successful bidder, our office will contact you at the conclusion of the sale or the next day, depending on when the sale is completed to arrange payment. Again, simple and easy! Clerical processing fees do apply. See full details on absentee bidding form.

IMPORTANT NOTE: To ensure you are registered to bid by any of the above methods we ask that you make all arrangements at least 24 hours prior to the sale you want to bid at. We know that sometimes last minute things happen and we will do our best to get you through the process as quick as possible, but we can't guarantee registration in time when trying to organize later than that. We will do our very best. But, for your protection, and ours, we must follow protocol and get all pertinent information in place before you will be registered to bid. On behalf of all of us at Fraser Auction Service, we thank you for your interest in our sales, your bidding and understanding as to why it is important that we verify information when you are not bidding at our sale in person. We look forward to working with you!

www.fraserauction.com



***Our reputation is
Your guarantee...***

WHAT'S COMING UP!

APRIL 1	LAND AUCTION	2
APRIL 15	MEL GREEN	4-5
APRIL 17	CENTURY SMITH FARMS LTD . .	6-7
APRIL 18	KILLARNEY CONSIGNMENT. . .	8-9
APRIL 20	ED & CATHY SHAW.	10-11
APRIL 21	KING CATTLE RANCH	12-13
APRIL 22	ROB & BOB WILLMAN FARM. .	14-15
APRIL 23	BOB & SHARON WIELER. . . .	16-17
APRIL 24	MALCOLM WILD FARMS	18-19
MAY 1	RONALD FARMS.	20-21
FULL-FLEDGED AUCTIONEER JESSE CAMPBELL		22
WHY AGE YOUR WALLEYE? KADE CAMPBELL		23
MAY 12	DURSTON HONEY FARMS.	24
MAY 20	BUSY BEE FARMS.	24
MAY 27	MB BEE SALE	24
MAY 23	ARMAND & COLINE VERHAEGHE	26-27
JUNE 4	FDKL CHAROLAIS	28-29
JUNE 5	MANITOBA 1ST HARDWOOD SAW LOGS	30
JUNE 13	PRE HAYING CONSIGNMENT	32
JUNE 15	DALEEN FARMS	34-35
JUNE 17	RANDY GORDON & BARB MCCAIG.	36-37
JUNE 18	DENBAR FARMS LTD	38-39
JUNE 19	B & P FARMS LTD	40-41
AUG 15	ESTATE OF RENE VANDORNE	42



LAND AUCTION

RM OF FISHER & NORTHERN AFFAIRS AREAS

APRIL 1st

INVITATION TO SUBMIT A WRITTEN OPENING BID and BID BY PHONE AUCTION

Please accept our invitation to submit your opening bid and become eligible to take part in this upcoming land auction. Visit our website www.fraserauction.com for information and forms to become part of the phone bid auction of the 11 parcels of land which are located in the R.M. of Fisher & Northern Affairs areas.

- | | | |
|--|-------------------------|------------------------|
| (#1) SW 35-26-3 W1 | (#2) SE 7-25-2 W1 | (#3) DES NE 7-25-2 W1 |
| (#4) SE 18-27-2 W1 | (#5) SE + SW 12-28-2 W1 | (#6) NE 1-28-2 W1 |
| (#7) DES SW 1-28-2 W1 | (#8) NW 36-24-3 W1 | (#9) SE 1-25-3 W1 |
| (#10) LOT 1 BLK 49199 (part there of SE 4-26-3 W1) | | (#11) DES SE 4-26-3 W1 |

I would like to thank you in advance for your interest in this land auction. Should you have any questions regarding this auction and or the process in which it will be conducted please feel free to contact me directly 1-204-724-2131 or e-mail fraserauction@gmail.com

LAND INFORMATION:

Information on land to be sold by written opening bid and phone auction: Auction consists of 11 parcels of land approx **1667.88** acres (Based on 2019 tax assessments)

PROPERTY DESCRIPTIONS:

PARCEL #1 (Approx 160.00 acres)
SW35-26-3W Title #1125998

PARCEL #2 (Approx 160.00 acres)
SE7-25-2W Title #1243382

PARCEL #3 (Approx 158.73 acres)
DES NE7-25-2W Title #1243421

PARCEL #4 (Approx 160.00 acres)
SE18-27-2W Title #1505721

PARCEL #5 (Approx 320.00 acres)
SW & SE 12-28-2W Title #1879772

PARCEL #6 (Approx 160.00 acres)
NE1-28-2W Title #1879773

PARCEL #7 (Approx 70.15 acres)
SW1-28-2W Title #1879774

PARCEL #8 (Approx 160.00 acres)
NW36-24-3W Title #1311531

PARCEL #9 (Approx 159.00 acres)
DES SE1-25-3W Title #1652446

PARCEL #10 (Approx 24.79 acres)
LOT 1 BLK 49199 Title #2400581

PARCEL #11 (Approx 135.21 acres)
DES SE4-26-3W Title #2400586

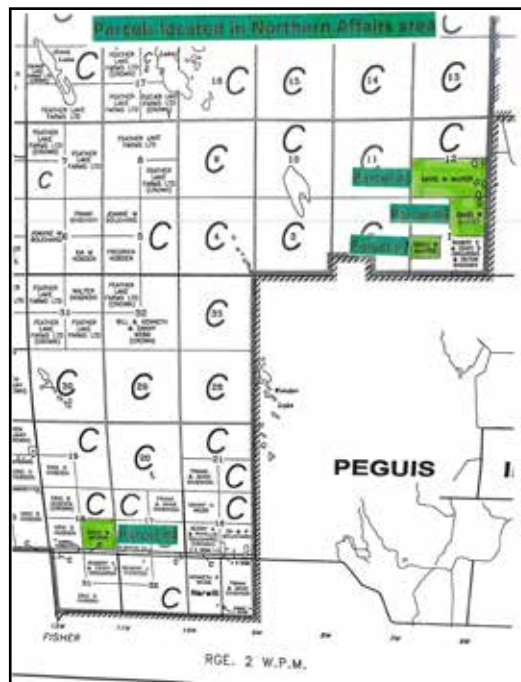
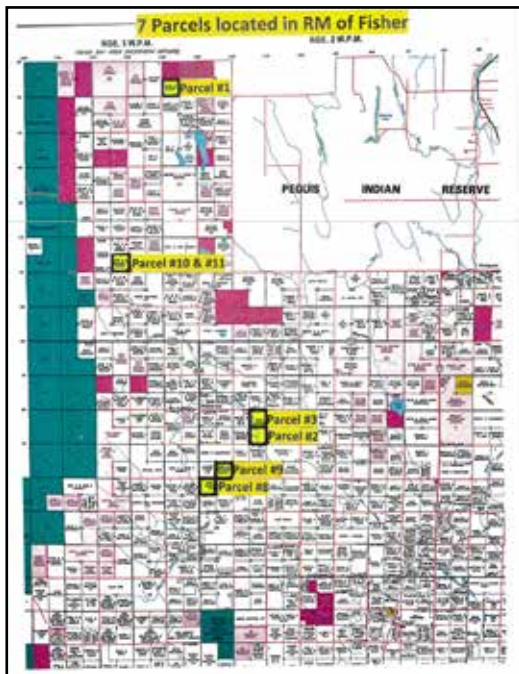
Acre areas based on 2019 tax assessments.

IMPORTANT DATES:

March 31st, 2020 (Opening bids close at 5:00pm)

April 1st, 2020 (Phone auction takes place starting at 1:00pm)

April 30th, 2020. (Closing Date)



For more information please visit www.fraserauction.com

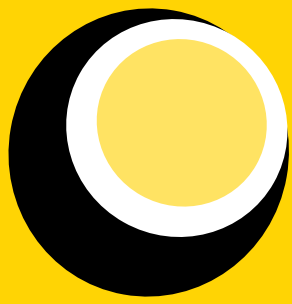
FRASER AUCTION SERVICE LTD.

Brandon, MB Auctioneer: Scott Campbell / Jesse Campbell

P: 204-727-2001 F: 204-729-9912 TF: 1-800-483-5856 www.fraserauction.com E: office@fraserauction.com

Licensed and bonded. P.L. License #918093. Member of M.A.A., S.A.A., A.A.A., A.A.C.

NOTE: Cheques of \$50,000 or more must be accompanied by bank letter of good standing. For more information on this please call Fraser Auction 204-727-2001. Not responsible for errors in description. Subject to additions and or deletions. Property owners and Fraser Auction Service not responsible for any accidents. GST & PST where applicable. TERMS: Visa, MasterCard, Debit, Cash or cheque.



Calidon

Equipment Leasing

Why Lease with Calidon?



Early
Buy-Out Options



No
Documentation Fees



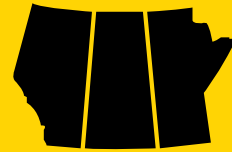
Tax
Benefits



Increase
Cash Flow






Intergenerational
Transfer of Wealth



From Start to Finish,
All Leases Managed
on the Prairies

HAVE QUESTIONS?

CALL OR REACH US ONLINE!

 calidon.ca  1-877-956-0082  info@calidon.ca





MEL GREEN RETIREMENT FARM AUCTION

ASHVILLE, MB. | WEDNESDAY, APRIL 15th | 11:00am

For more information, contact seller Mel Green (Cell) 204-648-3983 or (Home) 204-638-7634

DIRECTIONS: (SE22-25-21W) 51.1706, -100.3296

From Ashville, MB., 0.6kms south on #10 Hwy to Road 147N, 2.2kms west on Rad 147N to sale site on north side

From North Jct of #5 & \$10 Hwy (Ashville Junction), 3.3kms west on #5 to Road 123W, 1.6kms north on Road 123W to Road 147N, 1km east on Road 147N to sale site on north side

From Gilbert Plains, MB., 10kms east on #5 to Road 123W, 1.6kms north on Road 123W to Road 147N, 1km east on Road 147N to sale site on north side Watch for signs Sale Day.

ORDER OF SALE: 11:00 (parts, tools, livestock items, misc farm related items) 12:30 (Internet bidding starts) liquid fertilizer tanks, bins, fans, followed by equipment

TERMS: •2011 JD 9870 STS Bullet Rotor SP Combine, •2011 30' JD 630F Hydra Flex Header & •2008 JD 4895 SP Swather w/30' Honey Bee header: Terms are: 25% down sale day by way of non-refundable deposit. Balance due on or before August 1, 2020 by certified cheque payable to MEL GREEN Unit will stay in the possession of MEL GREEN until paid in full. Purchaser must insure unit at time of sale.



LIVE INTERNET BIDDING WILL BE AVAILABLE AT THIS SALE www.fraserauction.com



TRACTORS & CRAWLER:

- 2008 JD 9430 4WD 425hp Tractor w/4 remote hyd, return line, 710/70R38 duals (like new), Starfire ITC Dome, JD Brown Box monitor, SF1 auto track card in Brown Box, Quad Range trans, 3217hrs showing, s/n003365
- 1990 JD 8760 4WD 300hp Tractor w/3 remote hyd, return line, 20.8-38 duals, Quad range trans, Starfire ITC Dome, JD Brown Box Monitor, SF1 auto track card in Brown Box, 9480hrs showing, s/n002835 (rebuilt eng & hyd pump at 7000 hrs -work done at Parkland Tractor & Reit-Syd JD)
- 1966 JD 3020 DSL Open Station 2WD 77hp tractor w/single hyd, dual PTO, newer engine & hyd pump, Syncro trans, 18.4-30 rubber, 3881hrs showing (clock changed), s/n094038
- 1965 JD 3020 DSL Open Station 2WD 77hp tractor w/2 remote hyd, dual PTO, Syncro trans, 18.4-30 rubber, 1899hrs showing (clock changed), s/n069347
- Cockshutt 1850 MFWD 102hp tractor w/707 Leon loader, bucket, grapple, 3 remote hyd, PTO, Aux hyd pump, Hydra Power drive trans, 18.4-38 singles rear rubber, 14.9-26 front rubber, 3818hrs showing (clock not working)
- Fiat-Allis FL-10C crawler loader w/bush ROPS, 16" pads, 7" toothed bucket, rear hitch, power shift trans, 5450hrs showing, s/n110516

SPRAYER:

- 2003 JD 4710 sp sprayer w/96' booms, 800-gal SS tank, 2" plumbing, 5-way nozzle bodies, 5-section boom controls, Norac boom height, Spray test system, Star Fire ITC dome, JD 2630 monitor with Green Star 3, SS front dividers, Firestone 20.8R38 & 320/90R46 rubber on rims, 2977hrs showing, s/n004341 (Unit is always wintered in heated shop)

HARVEST EQUIPMENT:

- 2011 JD 9870 STS Bullet Rotor SP Combine w/JD 615P pick-up header, long auger, hopper topper, fine cut chopper, deluxe chaff spreader, 800/70R38 single front rubber, 28L-26 single rear rubber, Pro Drive, 1359 rotor hrs showing, 1842 engine hrs showing, s/n741118 (Unit was through JD Greenlight inspection December 2019)
- 2011 30' JD 630F Hydra Flex Header w/pick-up reel, fore & aft, 2-wheel transport, light kit, s/n741472
- 2008 JD 4895 SP Swather w/30' HoneyBee header, pick-up reel, rubber slats canvas, fore & aft, lateral tilt, 1071 cutting hrs showing, 1381 engine hrs showing, s/n340030
- 8' Metal concave swath roller
- Labtronics 919 Moisture Tester w/Digital Scale

TRUCKS:

- 2006 Freightliner Columbia T/A Grain truck w/20' B+H, roll tarp, 22.5 rubber, rear hoist controls, C15 Cat engine, 10 spd trans, 617,418 showing, VIN#1FUJA6AV16PU31759, SAFETIED
- 1988 Ford Aeromax L9000 T/A Grain Truck

- w/22' B+H, roll tarp, 24.5 rubber, L10 Cummins engine, 10 Spd Fuller trans, 502,850kms showing, VIN#1FDYY95L1JVA36993, SAFETIED
- 1980 GMC 7000 T/A Grain truck w/20' Midland B+H, roll tarp, (2) 1250-gal poly water tanks, 2" water pump, 427 gas engine, 5+4 trans, air brakes, 10.00-20 rubber, 82,745 showing, VIN#T47DEAV572439, SAFETIED
- 1986 Ford F800 S/A grain truck w/16' Canade B+H, roll tarp, 429 gas engine, 5+2 trans, 22.5 front rubber, 10.00-20 rear rubber, 066,426kms showing, VIN#1FDPF82K5GVA34230
- Chevy C65 T/A truck w/13' Arnes gravel box, runs & drives, 10.00-20 rubber, gas engine, std tans, NO TOD-FARM USE ONLY
- Dodge 400 S/A truck w/14' Metal B+H, runs & drives, NO TOD-FARM USE ONLY

TRAILERS:

- 2007 26' Sylvan T/A 5th wheel flat deck trailer w/Beavertails, fold down ramps, wooden deck, 2-7000lb axles, DBL jacks on front, VIN# 2D9FSK2EX7R108261
- 25' Pintle hitch T/A Dualled flat deck trailer w/Beavertails, flip up ramps, used for crawler, NO TOD-FARM USE ONLY

SEED & TILLAGE:

- 50' NH P2070 Air Drill w/NH P3440 poly triple compartment Air cart, 10" self-loading auger, individual section control on monitor, on-row packers, carbide tip openers, dual chute, plus Alpine kit, S/S metering tubes, dual fans, HID lighting on cart, s/n Drill YAS004035, s/n Tank (2016) YGS057111 (Selling as one unit), (done less than 8000 acres, drill sowed 4 crops, Air Cart-3 crops)
- 40' Bourgault 8810 tillage w/Dickie John variable rate NH3 kit, mounted radar on tillage, 10" spacing, knock-on sweeps, 4 bar Bourgault harrows, s/n824100
- 2000-gal Western NH3 tank on HD 4-wheel wagon, s/n34352A (Fresh Certification)
- 1995 41' JD 735 tillage w/knock-on sweeps, 3 bar Degelman harrows, 10" spacing, s/n000127
- 1250-gal poly liquid fertilizer caddy on 4-wheel wagon, 18.4-26 Diamond Tread rear & 16.5L-16.1 Diamond Tread fronts, 2" plumbed, John Blue ground drive fertilizer pump
- 16' Landoll Icon 1632 pt blade scraper w/6-way blade
- 2005 70' Bourgault 6000 Mid harrows w/5 bar harrows, s/n38428MH-10
- 60' Inland harrow packer bar w/P30 coils, new tines, walking beam axles, s/n247
- 14' Ezze-On Tandem Disc w/notched front, smooth back
- 12' Cockshutt deep tillage
- 10' International cultivator, shop modified-for extra row for shanks

- Degelman R570S Rotary Stone Picker, ground drive w/clutch, rebuilt with new bats, s/n20533
- Degelman 570 Stone picker, ground drive, s/n2213

GRAIN HANDLING:

- Kwik-Kleen grain cleaner w/7 rolls, electric motor, always shedded
- REM 2500 Grain vac w/1000PTO, steel & rubber hoses, bin nozzle, s/n8216
- 2017 8"x37' Brandt auger w/Brandt Easy move self-mover kit, 26.5hp Kohler Command Pro Engine, hyd lift winch, Standard & Turbo inlets, s/n121591
- Westfield MK100-61' PTO Swing hopper auger w/full bin sensor, single auger in hopper, light kit, s/n203135
- SLMD10-1800 Sakundiak PTO Swing hopper auger w/reversible gear box, DBL augers in hopper, s/n68413
- 8"x31' Farm King auger w/13hp Honda

BINS & FANS:

- (3) 3250-bushel Westeel hopper bottom bins on Pelloquin hoppers w/DBL skids, Aeration Xs
- 3250-bushel Westeel on Westeel Elite hopper w/triple skid, Aeration tube
- 2000-bushel Westeel Roscoe on Pelloquin hopper w/skid, Aeration tube
- 1600-bushel Metal Industries hopper bottom bin on legs (older)
- 60-Ton Friesen hopper bottom epoxy coated fertilizer bin w/DBL skid
- (2) Grain Guard 3hp 1ph aeration fans
- Flaman 3hp 1ph aeration fan

OTHER EQUIPMENT:

- NH 644 Rd baler w/540 PTO, bale kicker, always shedded, s/n941977
- 10"x20" Apollo roller mill w/10hp electric motor
- 8' front mount blade - was mounted on JD 3020

LIVESTOCK:

- Triple E Squeeze Chute w/palp cage, auto catch head gate
- Round bale feeders
- (2) 24'-30' Drill stem belt bottom feeders
- Assortment of 1" square tubing gates & panels

TANKS:

- 10,000-gal Enduraplast poly liquid fertilizer tank (Green)
- 5,000-gal Hold-On liquid fertilizer poly tank (Blue)
- 1200-gal poly tank
- Low Profile Skid Tank w/GPI 12-volt pump & nozzle

See www.fraserauction.com for complete listing

FRASER AUCTION SERVICE LTD.

Brandon, MB Auctioneer: Scott Campbell / Jesse Campbell

P: 204-727-2001 F: 204-729-9912 TF: 1-800-483-5856 E: office@fraserauction.com www.fraserauction.com

Licensed and bonded. P.L. License #918093. Member of M.A.A., S.A.A., A.A.A., A.A.C.

NOTE: Cheques of \$50,000 or more must be accompanied by bank letter of good standing. For more information on this please call Fraser Auction 204-727-2001

Not responsible for errors in description. Subject to additions and or deletions. Property owners and Fraser Auction Service not responsible for any accidents. GST & PST where applicable. TERMS: Visa, MasterCard, Debit, Cash or cheque.



CENTURY SMITH FARMS LTD.

GARY & LORI SMITH

RETIREMENT FARM AUCTION

PORTAGE LA PRAIRIE, MB. | FRIDAY, APRIL 17th | 10:00am

For more information, contact seller Gary Smith 204-856-3588 Email: c200farm@gmail.com

DIRECTIONS: (SE 34-12-6W) 50.050122, -98.204057

From Portage la Prairie, MB. (Jct #1A & #240) Go right into Portage on #1A, Saskatchewan Ave & Tupper Street, 8.4 kms north on #240 to Rd 71N, 5.8 kms east on Rd 71N to sale on north side
Watch for signs Sale Day.



ORDER OF SALE: 10:00 (tools, parts, shop equipment, misc items, livestock) 12:30 (Internet bidding starts) Bins & Fans, Equipment starts to sell.

LIVE INTERNET BIDDING WILL BE AVAILABLE AT THIS SALE www.fraserauction.com



TRACTORS:

- 1995 NH 9680 4WD 350HP tractor w/4 remote hyd, std trans, 24.5-32 duals – new in Spring 2019 Good Year Dyna Tech II, 6730hrs showing, s/nD103339
- 1985 CaseIH 2294 MFWA tractor w/3 remote hyd, dual PTO, power shift, refurbished cab, 20.8R38 duals – new inside rear rubber, 16.9-28 single front rubber, 7260hrs showing, s/n9939057
- 1981 Case 2090 2WD tractor w/Factory 3PT, dual, triple hyd, dual PTO, refurbished cab, 7405hrs showing, s/n9926664

HARVEST EQUIPMENT:

- 2005 NH CR960 SP Combine w/NH pick-up head, Swath Master pick-up, Seed Saver, 300-bushel hopper, fine cut chopper, chaff spreader, long auger, 900/60R32 rubber, 1760 sep hrs showing, 2220 eng hrs showing, s/nHAJ101815
- 1996 NH TR97 SP Combine w/NH 971 pick-up head, Swath Master pick-up, 240-bushel hopper, fine chopper, 1838 Threshing hrs showing, 2474 eng hrs showing, s/n558221
- Bean Header w/Sund pick-up for NH TR97 Combine
- 2008 30' NH 94C Draper header w/Schumacher knife, self-transport, pick-up reel, s/n081299 for CR960
- 2004 30' NH 74C Flex header w/Schumacher knife, Arc Fab transport, pick-up reel, s/nHAJ025309 for CR960
- 2008 MF 9220 SP swather w/25' 5200 Series header, DSA, hyd tilt on header, pick-up reel, 18.4-26 rubber, 857hrs showing, s/nHP08244
- Cereal Implement 722 SP DSL swather bean windrower w/22' Sund pick-up (3 years old), 2828hrs showing, s/n38018-90140
- Elmers BC622 6 row - 22" bean cutter w/Nichie knives, s/n021890
- 24' Homemade header transport w/Elmers arms
- Homemade header transport
- 2000 10' Farm King Swath Roller
- Labtronics 919 Grain tester, digital scale, comes with case
- Labtronics 919 Grain tester, digital scale

TRUCKS:

- 2004 IH 8600 T/A truck w/20' Lode King box & hoist, hoist controls at rear, Lode King roll tarp, 10 spd trans, Cummins engine, Approx 455,000 kms showing, VIN# 1HSHXAH74J091699, SAFETIED
- 1995 IH 8100 T/A truck w/20' Canade box & hoist, Michael's roll tarp, hoist controls at rear, 10 spd trans, 210 IH engine, Approx 451,232 kms showing, VIN# 1HTHCAADR5SH698167, SAFETIED, (engine overhauled 2016 – at 445,608kms showing)
- 1981 IH S1900 T/A truck w/20' Metal Industries box & hoist, Midland roll tarp, 446 gas engine, 5+2 trans, 95,535 original kms showing, VIN#2HTAF19BXBCA22439, SAFETIED, (1 owner truck)
- 1996 Dodge Ram 1500 Laramie SLT Ext Cab truck w/fully loaded, V8 gas, auto trans, 265,625kms showing, VIN# 3B7HF13Z6T1M86971, SAFETIED (1 Owner vehicle)
- 1966 Chevrolet T/A grain truck, 16' Canade B+H, 366 engine, 5+4 trans, 11.00-20 front rubber, 9.00-20 rear rubber, 41,850 miles showing, VIN# 6M85038A0821H

TRAILER:

- 1979 16' WW T/A Stock trailer, bumper hitch, VIN# CSF71950

SPRAYER:

- 2005 4640 Spray Coupe w/64' booms, 400-gal tank, Raven SC460 controls, 3 sets of nozzles, 1784hrs showing, s/nJM8M112

SEED & TILLAGE:

- 2011 30' Sunflower 1435 C-Flex tandem disk w/rock gangs, smooth blades, scrapers, s/nCZ160028-30
- 40' Ezee-on 3500 cultivator w/3 bar harrows, new knock-on sweeps, NH3 kit
- 36' Ezee-on 7450 Deep tiller w/3 bar Ezee-on harrows, new teeth, knock-on sweeps, s/n43800
- 1983 36' Cereal Implement 279 field cultivator w/3 bar harrows, New knock-on sweeps
- 40' Blanchard wing-up coil packers w/P20 coils
- JD 71 Flex planter 12 row - 22" spacing w/hyd markers, big pots, used to sow edible beans, sugar beets, carrots, with right plates
- 1989 30' CaseIH 6200 DD press drills 3-10' sections w/back on transport, hyd markers, rubber packers, (discs and rubbers on packers changed 3 years ago), shedded (hasn't been used for last 2 years)
- 1987 IHC 6200 DD press drills 3-10" sections w/Factory transport, shedded, (used to sow 2019 crop)
- 60' Melroe 400 Diamond harrows
- 1989 42' Riteway Harrow packer bar w/P20 coils, s/nRHP446
- Alloway 12 row - 22" spacing 3PT row crop cultivator, w/disks & tunnels
- Tyler 4-ton T/A fertilizer spreader w/540PTO, single spreader
- Melroe 903 16"-8 bottom plow w/spring resets, sheers kept greased
- 10' Glencoe 3PT cultivator w/mounted harrows
- 18' Homemade land roller, 48" drum x 1/2" w/transport
- 20' drill fill tender w/hyd augers
- 16' Haul-All drill fill tender w/hyd augers
- 16' Convey-All drill fill tender w/electric hyd drive, grain auger is a brush auger
- (2) JD 1600 6 bottom plows w/factory tandem hitches, 16" shears

GRAIN HANDLING:

- 2016 8"x33' Meridian auger w/Meridian self-mover kit, 23HP Kohler motor, electric start, electric clutch, reverser, s/n36201411-03180
- 2013 HD8-1600 (52') Sakundiak auger w/Meridian self-mover kit, Vanguard 32HP motor, electric start, electric clutch, reverser, light kit, s/n70221
- 55' Convey-All TC-1055 belt conveyor w/PTO drive, bin alarm, s/n2705045313
- 2007 11' Convey-All transfer belt conveyor w/9hp Honda motor, s/n0505066254
- 2010 MK 130-61' Westfield PTO swing hopper auger w/hyd mover on hopper, hyd lift on hopper, reverser, full bin alarm, hopper cover, s/n220790
- 1993 TR100-61' Westfield Swing hopper auger w/hyd drive on swing auger, s/n07167
- 8"x51' Versatile Auger w/PTO drive, used for treating seed
- Mid-West 552 Grain Vac w/540PTO, s/nMW-88-552-1086
- 1968 MC Continuous Propane Grain dryer (400 bushel) on wheels
- 6"x37' Westfield pencil auger w/3HP electric motor, used for grain dryer
- 6"x35' Versatile auger, has 3 spd & reverser clutch & transmission, used for grain dryer
- 4"x14' Westfield pencil auger on running gear w/electric motor,
- poly auger hoppers

BINS:

- (9) Approx 3850 Bushel Westeel Roscoe flat bottom bins on cement w/new style doors, cable openers, 6 rings, 19' diameter

- (5) Approx 2100 Bushel Westeel Roscoe bins on Westeel hopper cones w/aeration tubes, 6 rings, 14' diameter
- (1) Approx 2100 Bushel Westeel Roscoe bins on Meridian hopper cone w/aeration tubes, 6 rings, 14' diameter
- 1900 Bushel Grain Max hopper bottom bin w/aeration rocket in cone
- (2) 1350 Bushel Metal Industries Hopper bottom bins, epoxy coated, repainted, used for fertilizer
- 1350 Bushel Friesen hopper bottom bin, repainted
- 900 Bushel Friesen hopper bottom bin, repainted
- (2) Grain Guard 3hp aeration fans
- Gould 2hp aeration Fan
- (2) Field King 3hp aeration fans
- (2) Caldwell 3hp aeration fans
- (3) Grain Guard Propane Supplemental heaters (60,000 BTU)

3PT EQUIPMENT & OTHER:

- 2013 Farm King 960 3PT snow blower w/540 PTO, DBL auger, hyd chute, s/n204015312
- 2000 6' Schulte 3PT XH600 rotary mower, s/nC10190350906
- 10' Zettler box scraper on wheels
- NH #56 side delivery hay rake, as is
- Shop made side boom sprayer w/12' boom, used to spray ditches, fence lines, hyd pump, 500-gal tank, mixing tank

LAWN & GARDEN, LEISURE:

- Kubota L235 Lawn tractor w/60" cut belly mount mower, 3PT, 540 PTO, 755hrs showing (clock not working), s/n1070
- Kubota F2680 front deck lawn mower w/Dsl engine, 60" deck, 511hrs showing, s/n10298
- 1983 Honda 200 Big Red 3-Wheeler w/electric start
- 1983 Honda 200 3-Wheeler w/pull start
- 1983 Honda 185 3-Wheeler w/pull start
- 1982 Honda 200 Big Red 3-Wheeler w/electric start
- 1983 Honda 200 Big Red 3-Wheeler – PARTS ONLY

LIVESTOCK:

- Assortment of panels – various sizes
- Headgate
- 150-gal water trough
- (2) silage end gates – fits IHC S1900 truck, headache racks
- (3) Ritchie water bowls
- Coop electric fencer Energizer Model 1100, range 20 miles
- rubber tire feed trough
- page wire
- used barb wire
- Shop made wire roller – hyd drive
- railway ties
- treated fence posts
- nursing bottle

See www.fraserauction.com for complete listing

FRASER AUCTION SERVICE LTD.

Brandon, MB Auctioneer: Scott Campbell / Jesse Campbell

P: 204-727-2001 F: 204-729-9912 TF: 1-800-483-5856 E: office@fraserauction.com www.fraserauction.com

Licensed and bonded. P.L. License #918093. Member of M.A.A., S.A.A., A.A.A., A.A.C.

NOTE: Cheques of \$50,000 or more must be accompanied by bank letter of good standing. For more information on this please call Fraser Auction 204-727-2001

Not responsible for errors in description. Subject to additions and or deletions. Property owners and Fraser Auction Service not responsible for any accidents. GST & PST where applicable. TERMS: Visa, MasterCard, Debit, Cash or cheque.



12TH ANNUAL KILLARNEY & DISTRICT EQUIPMENT CONSIGNMENT AUCTION

KILLARNEY, MB. | SATURDAY, APRIL 18th | 9:00am

For more information or to consign contact: Del Smith 204-534-7783 or Fraser Auction Service 204-727-2001

DIRECTIONS: Sale will be held at the farm of Del & Gert Smith, ½ Mile West of the Jct of #3 & #18 Hwys. (Just off #3 across from water tower)

Watch for signs Sale Day.

NOTE: THIS SALE WILL FEATURE: RETIREMENT DISPERSAL FOR GEORGE MOFFAT •Farm & Industrial Equipment •Trucks •Trailers •Livestock Handling Equipment •Vehicles •Lawn & Leisure •Shop Equipment & Tools, 3PT Hitch & Acreage Equipment • Plus Misc. Pallet Lots & Soooo Much More!!!

NO LIVE INTERNET BIDDING WILL BE AVAILABLE AT THIS SALE www.fraserauction.com



TRACTORS:

- 2003 JD 7320 tractor w/741 self leveling loader w/8' bucket with grapple fork, factory 3PT hitch, 16spd Pwr Quad trans with Creeper gears, left hand reverser, 3 remote hyd, 18.4x42 radial rear tires, 380/85R30 new front tires, air seat, 5007hrs showing, s/nRW7320M002957
- 1992 Case IH 5250 Maxum tractor with 510 loader with grapple fork, 3pt hitch, PTO, heat & air in cab, Cummins 5.7 engine, s/n JF1023044
- 1985 Versatile 856 Tractor, Designation 6, Cummings 240hp power shift, 4 remote hyd, 1000 PTO, 1804x38 Radial duals, 6720 hrs showing, s/n251388
- Ford 1210 3 cylinder DSL Tractor, hydro drive, 3pt hitch, front & rear PTO
- IH Super W6 Tractor, belt pulley and PTO, s/n6141

SEED & TILLAGE:

- Unverferth Mcclary 375 Hopper Gravity Wagon, extensions, DBL chute, Heavy G12 4 wheel wagon, 10.00x20 rubber
- 8 Ton Tyler fertilizer spreader, stainless steel box, hyd shut off, good condition
- Flexi-Coil 64 PT Sprayer, 130' Booms, 830-gal tank
- 60' Brandt Quick Fold Sprayer w/800-gal poly tank, Chem mix tank, hyd pump
- 36' Herman Harrows
- 33' Case IH 5600 Chisel Plow w/NH3 hitch & 3 row harrows
- 26' Wilrich Field Cultivator, 3 row harrows
- 24' Wilrich Deep Tiller, 3 row harrows
- Dual NH3 tanks, 1000-gal tank each, SAFETIED
- 14' IH 45 Field cultivator
- 12' Cockshutt deep tiller
- 7 Bottom Melroe Plow
- (2) 10' JD 9350 Seeder, steel press wheels
- Flexi-Coil packers

SEED:

1. Alfalfa - 2 skids 1200lb 24 x50LB bags
Multi Leaf , Nitragin Gold Inoculant Expires Dec 31/20
2. Alfalfa /Timothy- 3skids 1500 LB/ skid 30x 50LB bags
80% Alfalfa/20% Timothy , Inoculated Expires Dec 31/20
3. Timothy - 1 skid 10x50LB bags
4. Pasture Blend 1 skid 30x50LB bags
Alfalfa 5%, Timothy 12%, Perennial Rye Grass 3% Slender Wheat Grass 35.5%, Intermediate wheat grass 35.5%, Birdsfoot Trefoil 6%, Tall Fescue 3% Inoculated Nitragin Gold
5. Hay Blend 2 skids 15x50LB bags
Alfalfa 52%, Timothy 10%, Perennial Rye Grass 5% Slender Wheat Grass 15%, Intermediate wheat grass 15%, Birdsfoot Trefoil 3%, Inoculated Nitragin Gold
6. Erosion Blend 1 skid 24x50LB bags
Alfalfa 12%, Timothy 15%, Perennial Rye Grass 17% Slender Wheat Grass 17%, Intermediate wheat grass 3%, Birdsfoot Trefoil 3%, Tall Fescue 3%, Oats 39%, Flax10% Inoculated Nitragin Gold
7. Paddock Blend 1 skid 15x 50LB bags
Timothy 10%, Perennial Rye Grass 3% Slender Wheat Grass 7.5%, Intermediate wheat grass 7.5%, Birdsfoot Trefoil 3%, Oats 50%,
8. Wildlife Blend 1 skid 30 x 50LB bags
9. Oats 50%, Wheat 25%, Peas 25% uncleaned
- Seed Oats 1 skid 30x50LB bags
Cleaned oats
10. Saline Soil Mix 30x 50LB bags
11. 3x 30lb Fire Extinguisher brand new

GRAIN HANDLING:

- 8"x 61' Westfield Swing Auger, s/n45505
- Scoop-A-Second PTO Auger
- 11' grain bin sample probe

HAYING EQUIPMENT:

- 14' Case IH SC414 Mower Conditioner, s/n CFH0149106
- JD 330 Rd Baler w/ gathering wheels, s/n E00330X743877
- Case IH 8480 Rd Baler
- NH 271 Square Baler, s/n4238
- 14' Degelman Model RR1500 rock rake, s/n 3630
- 4-wheel hay rack

HARVEST EQUIPMENT:

- 550 Western Massey Siler Top Combine, DSL, cab, air, chopper, 2218 hrs showing, s/n2363-5176
- Versatile 4700 Swather, 25', DSL, cab, air, batt reel, 750 hrs showing, s/n288616
- (2) 30' Case IH 8230 PT Swather w/pick-up reels
- 2009 35' Case 2020 Flex header, DBL knife drive, full lock up kit for rigid off ground cutting, auto header height control when it flex mode, good condition, field ready
- 2007 35' Case 2020 Flex header, DBL knife drive, full lock up kit for rigid off ground cutting, auto header height control when it flex mode, good condition, field ready
- 30' MacDon Header, dual cava drive, mounted on a BI-DI, s/n92989

TRUCKS/VEHICLES:

- 1991 GMC Top Kick SLE Truck w/17' B&H, 427 gas motor, automatic trans, 22.5 rubber, 28,018 kms showing, SAFETIED
- 1952 Merc M3 w/V8 motor, 4 speed trans, 29,528 miles showing, VIN# PFA83AHP13288
- 1981 Chev Scottsdale 10.5 ton 4x4, V8 gas auto trans, 37,678 kms showing

TRAILERS, WAGONS & GRAIN BOX:

- 2002 Castleton Super B Semi Trailer, both have tarps, Lead VIN#2C9B3S4022S133167, Pup VIN# 2C9B3S5C72S133168, SAFETIED
- Doepker B train grain trailer

INDUSTRIAL EQUIPMENT:

- Power Matic farm scraper 3-yard, Model 425-D, s/n205-76
- (2) 8' Clam Buckets including cylinders, fit Case 721-821

ATTACHMENTS & 3 PT EQUIPMENT:

- NEW Stout Brush Grapple XHD84 w/ skid steer quick attach, High strength 1/2" steel, Universal Quick attach plate, 84" x 38" x 30", 6 7/8 Tine Spacing, Grapple opening 32", 3034 PSI hydraulic lines, NPT 1/2" hydraulic flat-faced couplers, cylinder guards
- NEW Stout Brush Grapple HD 72-8 w/ skid steer attachment
- NEW Stout Skid Steer Brush Grapple 66", High Strength 3/8" Steel, Universal Quick Attach Plate, 66"x35"x28", 9" Tine Spacing, Grapple opening 32", 3045 PSI lines with 1/2" cap
- NEW Stout Walk-Through Pallet Forks 48" w/skid steer quick attach, 3-position pin adjustment, 4000 lbs fork rating, High Strength Steel, Universal Quick Attach Plate, see through spill guard w/walk-through step, Frame 51"x57.5"
- (2) NEW Pallet Forks 48" w/skid steer quick attach, 3-position pin adjustment, 4000 lbs fork rating, High Strength Steel, Universal Quick Attach Plate, Frame 35"x45"
- NEW Stout Skid Steer Rock Bucket/Brush Grapple Combo HD72, Open-End w/ Skid Steer Quick Attach, 72", High Strength 3/8" Steel, Universal Quick Attach Plate, 72" x 41" x 30", 3" Tine Spacing, Grapple Opening 39", 3045 PSI Hydraulic Line, NPT 1/2" Hydraulic flat-faced couplers, cylinder guards
- NEW Stout Add-On Fork Grapple
- 5' Blade, 3PT hitch
- 60" Farm King Mower, 3PT
- 50" Farm King snow blower, 3PT

LIVESTOCK EQUIPMENT:

- NH 519 manure spreader, s/n 508574
- Feed Box Model GP703PTH, s/n RCF192170901
- Squeeze Chute
- (2) Lewis cattle oilers
- head gate
- 8'x24' Tin cattle shelter
- approx (50) panels
- (5) 24' panels
- (3) 12' panels
- 10' panel
- 9' panel
- 14' gate panel
- 15' gate panel
- 13' gate panel
- (2) 12' gate panels
- 9' gate panel
- (2) 8' gate panel
- 6' gate panel
- 24' - 7" wire mesh panel
- 22' - 7" wire mesh panel
- 17' - 7" wire mesh panel
- (4) 8' - 7" wire mesh panel
- Approx 400 fence posts

STORAGE BUILDINGS, TENTS, GREENHOUSE, GATES:

SHOP EQUIPMENT:

- (9) NEW Easy Kleen Magnum Gold, 4000 PSI 12V Hot Water Pressure Washer, C/W 15 HP Gas, Totally Self Contained
- Simoniz 1600 psi electric pressure washer
- ITC 3 ton hyd floor jack
- Blackjack 20 ton hyd bottle jack
- Pyrene 10lb ABC multipurpose fire extinguisher (fully charged)
- Mastercraft 100 piece drill bit set w/ Drill Doctor bit sharpener
- 5 gallon pail misc - bolts, muffler clamps, u-bolts
- 5 gallon pail misc - roller chains
- Small box misc - fuel nozzles, valves
- small box misc - hyd fittings
- 18"x20"x48" solid wood storage cabinet

LAWN & GARDEN, LEISURE:

- (4) 24" x30" concrete sidewalk slabs

BUILDING MATERIALS:

- NEW - metal sheets - various sizes and lengths

PUMPS & TANKS:

- (2) 1550-Gal-water tank
- 1200-Gal water tank

TIRES:

- Assortment of New Tires
- (4) Double Road 11R22.5 retread grip tires (like new)
- (2) Laufwnn used LT 265/70R17 tires (10/32 tread)
- 10 bolt 20" heavy truck steel wheel
- New 8 bolt 9.5" Implement hub assembly

MISCELLANEOUS:

- New 300 watt dust proof light fixture
- Pair - 6" x 10" Large rearview mirrors
- Several misc pieces of Westeel bin door parts

See www.fraserauction.com for complete listing

FRASER AUCTION SERVICE LTD.

Brandon, MB Auctioneer: Scott Campbell / Jesse Campbell

P: 204-727-2001 F: 204-729-9912 TF: 1-800-483-5856 E: office@fraserauction.com www.fraserauction.com

Licensed and bonded. P.L. License #918093. Member of M.A.A., S.A.A., A.A.A., A.A.C.

NOTE: Cheques of \$50,000 or more must be accompanied by bank letter of good standing. For more information on this please call Fraser Auction 204-727-2001

Not responsible for errors in description. Subject to additions and or deletions. Property owners and Fraser Auction Service not responsible for any accidents. GST & PST where applicable. TERMS: Visa, MasterCard, Debit, Cash or cheque.



ED & CATHY SHAW RETIREMENT FARM AUCTION

CARDALE, MB. | MONDAY, APRIL 20th | 12:30pm

For more information, contact seller Ed Shaw 204-365-0973 Email: shawed@goinet.ca



DIRECTIONS: (SW 25-14-22W) 50.212325, -100.366485

From Cardale, MB. (Jct #355 & Rd 125W), 3.3kms south on Rd 125W to Rd 82N, 3kms west on Rd 82N to sale site on north side

From Oak River, MB. (Jct #24 & #354), 8kms north on #354 to Rd 82N, 3.5kms east on Rd 82N to sale site on north side

Watch for signs Sale Day.

ORDER OF SALE: (There will be almost no small items to sell so don't be late!) 12:30 (welder, panel gates, tanks, pumps, and misc) 1:00 (Internet bidding starts) Equipment starts to sell

Terms: •2009 CaseIH 7120 AFS Combine. Terms are: 25% down sale day by way of non-refundable deposit. Balance due on or before August 1, 2020 by certified cheque payable to E & C SHAW. Unit will stay in the possession of CATHY & ED SHAW until paid in full. Purchaser must insure unit at time of sale.

LIVE INTERNET BIDDING WILL BE AVAILABLE AT THIS SALE www.fraserauction.com



TRACTORS:

•2013 NH T9.390 4WD Tractor 350hp w/3 remote hyd, return line plus aux, 620/70R42 duals, pwr shift, 1000 PTO, full integrated auto steer, Intelli View III monitor, 2233hrs showing, s/nZCF218171 (Unit was inspected by NH Technicians fall 2019)

•2014 NH T6.140 MFWD Tractor 110hp w/NH 845TL loader, bucket, joystick controls, 3PT, dual pto, 3 remote hyd, 460/85R38 rear singles, 380/85R28 front singles, 16 spd pwr shift, 955hrs showing, s/nZEBD08260 (Unit was inspected by NH Technicians fall 2019)

SPRAYER:

•2014 NH Guardian SP240R SP Sprayer w/100' Booms, 1200-gal poly tank, 3-way nozzle bodies, 5 section boom controls, 2" plumbed, 380/90R46 rubber with rear dual kit, (4) S/S Tridekon dividers, HID lights, Full Integrated auto steer, Intelli View IV Monitor, Pre-DEF unit, Cummins engine, auto trans, 440hrs showing, s/nYDYM00611 (Unit was inspected by NH Technicians fall 2019)

HARVEST EQUIPMENT:

•2009 CaseIH 7120 AFS Combine w/14' CaseIH 2016 pick-up head, long auger, Calamar spout, Mad Dog concaves (2 sets), all updates done, upgraded chopper bearings, chaff spreader, 900/60R32 & 28L-26 rubber, AFS Pro 600 Monitor, 1264 threshing hours showing, 1521 engine hours showing, (Through CaseIH Inspection winter 2020) s/nY8G205234

•2012 NH H8040 SP Swather w/30' HB30 header, pick-up reel, DBL knife drive, fore/aft, belly mount roller, Trimble guidance, Trimble steering wheel, FM-750 monitor, rear air bags, 661 engine hours showing, s/nYCG665837 (Unit was inspected by NH Technicians fall 2019)

•2009 36' NH 94C straight cut draper header w/pick-up reel, pea auger, DBL knife drive, Fore/Aft, CaseIH throat Adapter, Terrain Tracer, Factory transport, s/n36GB0914352

TRUCKS:

•2008 IH Dura Star 4300 S/A Grain Truck w/16' Loadline B&H, roll tarp, rear hoist controls, remote hoist, remote chute, 22.5 rubber, air brakes, GDT 210 DSL engine, 6 spd Eaton Fuller trans, 12,000lbs front, 22,000lbs rear, 521,130kms showing, VIN#1HTMMAAR68H571954, SAFETIED

•1997 IH 4900 S/A Grain Truck w/16' Ultracel B&H, roll tarp, rear hoist controls, 22.5 rubber, 466 DSL engine, auto trans, air brakes, 334,038kms showing, VIN#1HTSDAAL6VH408428, SAFETIED

TRAILERS:

•1970 24' Trail King T/A flat deck 5th wheel trailer w/checker plate steel deck, removable wooden 10" sides, VIN#TK19708

SEED & TILLAGE:

•49' Morris Maxim Air Seeder w/Morris 7240 Air Cart, single chute, 10" spacings, 3 1/2" steel packers, Gen 48 Carbide Tip openers, Seed Tool s/n4900004230, Tank s/n7249701063

•35' CCIL 807 tillage w/Raven Super Cooler NH3 kit, GPS variable rate, Raven Controller, carbide tip Atom Jet openers

•11' Deep tillage w/12" spacings

•Bush Hog fork type stone picker

•Diamond Fertilizer box

GRAIN HANDLING:

•Meridian SLMD12-72 PTO Swing Hopper Auger w/electric hopper mover, DBL augers in hopper, reversable gear box, 540 PTO, s/n02741

•Brandt 8"x40' Auger w/Brandt Track Mover kit, 25HP Kohler Pro engine, bin sweep, s/n95615

•poly auger hoppers

3PT EQUIPMENT & OTHER:

•9' Leon 396 3PT 5-way hyd blade, s/n335709

•5' Farm King 510 3PT Rotary Mower

See www.fraserauction.com for complete listing

FRASER AUCTION SERVICE LTD.

Brandon, MB Auctioneer: Scott Campbell / Jesse Campbell

P: 204-727-2001 F: 204-729-9912 TF: 1-800-483-5856 E: office@fraserauction.com www.fraserauction.com

Licensed and bonded. P.L. License #918093. Member of M.A.A., S.A.A., A.A.A., A.A.C.

NOTE: Cheques of \$50,000 or more must be accompanied by bank letter of good standing. For more information on this please call Fraser Auction 204-727-2001

Not responsible for errors in description. Subject to additions and or deletions. Property owners and Fraser Auction Service not responsible for any accidents. GST & PST where applicable. TERMS: Visa, MasterCard, Debit, Cash or cheque.



KING CATTLE RANCH

GLENN KING

RETIREMENT FARM AUCTION

MEDORA, MB. | TUESDAY, APRIL 21st | 9:30am

For more information, contact: Glenn King 204-747-4246

DIRECTIONS: (NE 19-3-24W) 49.2365, -100.6971

From Medora, MB. (Jct #3 & #254 Hwys), 1.7kms south on #254 to Rd 16N 0.3kms west on Rd 16N to sale on south side

Watch for signs Sale Day.

ORDER OF SALE: 9:30am (tools, parts, pallet lots, vet supplies, Misc.) 12:00pm (posts, panels, chutes, feeders, grain tanks, bins, ect) 1:00pm (major equipment)

TERMS: •1994 JD 9600 SP combine & •2006 JD 4895 SP Swather: Terms are: 25% down sale day by way of non-refundable deposit. Balance due on or before August 1, 2020 by certified cheque payable to KING CATTLE RANCH (GLENN KING) Unit will stay in the possession of KING CATTLE RANCH (GLENN KING) until paid in full. Purchaser must insure unit at time of sale.

NO LIVE INTERNET BIDDING WILL BE AVAILABLE AT THIS SALE www.fraserauction.com



TRACTORS & CRAWLER LOADER:

- 1999 JD 7410 MFWA 120hp Tractor w/JD 740 loader, bucket, grapple, joystick controls, 3PT, 2 remote hyd, dual PTO, 18.4-38 rear single rubber, 16.9-28 new front single rubber, front fender kit, power quad trans with 5th range hyd speed rear end, 7810 HD front axles, Rack & Pinion rear end, extra light pack, 300hrs on New transmission, 10,919hrs showing, s/n027061
- 1991 JD 4455 2WD 155hp Tractor w/JD 158 loader, bucket, grapple, joystick controls, factory 3PT, 3 remote hyd, dual PTO, 20.8R38 duals, 4 rib front rubber, belly mount fuel tank included, rebuilt trans, new radiator, new hyd pump approx 500 hrs ago, Power shift 15 speed, 11,920hrs showing, s/n012546
- 1965 JD 4020 O/S 2WD 101hp Tractor w/JD 46A loader, dual hyd, dual PTO, Square fenders, 18.4-34 rubber, Syncro trans, recent clutch, 6636hrs showing, 1500hrs on engine, s/n105529
- 1983 JD 8450 4WD 225hp Tractor w/4 remote hyd, return, 1000 PTO, 18.4-38 duals, Quad range trans, (clock was changed at 5245hrs) 1375hrs showing, new hyd pump, injectors & head gasket – changed same time as clock. s/n002532
- Cat 931B tracked loader w/6' toothed bucket, 14" pads, power shift trans, 00940hrs showing, s/n29Y0720-5G1083
- Ford 8N tractor – parts or for restoration
- DBL bale fork w/JD 740 quick attach
- 48" Work Saver pallet forks w/JD 740 quick attach
- MDS 2 prong bale fork w/JD quick attach
- 2 prong bale fork w/JD quick attach

HARVEST EQUIPMENT:

- 1994 JD 9600 SP combine w/JD 914 pick-up, long auger, hopper ext, roll tarp, dual front rubber, new rubber on rear, standard chopper, Sunny Brook concaves - beaters - rub bars, JD chaff spreader, Air Foil sieves, very straight unit, 4978 engine hrs showing, 3643 sep hrs showing, (only 600hrs on new rebuilt engine), s/n655780
- 1984 JD 7721 PT Combine w/JD 914 pick-up, chopper, long auger, Air Foil sieves, s/n600366
- 1997 30' JD 930R Straight cut header w/batt reel, 4-wheel transport, s/nR672093
- 2006 JD 4895 SP Swather w/30' Honey Bee Header, U/I pick-up reel, single knife drive, 1373 engine hrs showing, 945 cutting hrs showing, s/n320078

SEED & TILLAGE:

- 30' Bourgault Vibra Master Commander VM 26-30 tillage w/3 bar harrows, pull behind coil packers, 7" spacing, NH3 kit, Raven controls
- Valmar 1620L Granular applicator w/grass & alfalfa seed rolls
- 120' Bourgault 1850 field sprayer w/1600-gal poly tank, Chem mix tank, hyd pump, 23.1-26 Diamond tread rubber, s/nS2393
- 67' Herman Harrow Bar w/hitch mount tank, new tines, heavier bolts
- 10 Deep tillage w/3 bar harrows
- 18' Seed & Fertilizer tender w/swing out hyd augers (used for minerals and supplements)
- 14' Load King Seed & Fertilizer tender w/hyd augers (used for minerals and supplements)
- 14' Seed & Fertilizer tender w/hyd augers (used for minerals and supplements)

GRAIN HANDLING EQUIPMENT:

- 10"x70" Farm King PTO swing hopper auger w/hyd drive on swing auger, s/n8173736
- 7"x1400 Sakundiak grain auger w/Kohler Command Pro engine, s/n46475
- 6" Pencil auger on running gear w/hyd drive

HAYING EQUIPMENT:

- 2007 JD 568 Mega Wide Plus Rd Baler w/1000 PTO, approx 23,000 bales, twine tie, always shedded, s/n337209
- 1994 14' NH 116 Haybine w/new guards & sections, rubber crimps, s/n575950
- NH HT154 14-wheel V-Rake w/hyd adjust, s/n203307
- (2) 30x70 hay stack tarps – black

OTHER EQUIPMENT:

- 16' Hy-Grade 1600RS Multi angle PT scraper w/fold down end caps, steering rear axles, weight box, s/nJM0811-1483
- Saw Mill – band saw style w/16HP Kohler engine, 2-wheel transport, newer rubber

TRUCK & TRAILERS:

- 1991 Freightliner SilverAero T/A Hwy Tractor w/60" bunk, 24.5 rubber, 425HP CAT engine, 15 Speed trans, 745,251 showing, VIN#2FUY7XYBXMV377640, SAFETIED
- 1986 45' Wilson Silver Star T/A cattle pot w/24.5 rubber, VIN#1W15CS4N0G9510326, SAFETIED
- 1979 53' Trail Mobile T/A High Boy flat deck trailer w/ mounted tool box, 22.5 rubber, VIN#305005, SAFETIED
- 32' Load King T/A dual hopper grain trailer w/22.5 rubber, roll tarp, rear pintle hitch, VIN# 2L9DT3225GW004808
- 20' Keen Triple Axel flat deck trailer w/Beavertails, pintle hitch, fold down ramps
- ??' Load Trail T/A car hauler trailer w/ramps, 3500lbs axles

LIVESTOCK EQUIPMENT:

- Luck-Now 425 4 auger mixer feed wagon w/LH discharge, 1000 PTO, Digi-Star EZ2000 scale head with on board scale
- Haybuster 2620 Bale processor w/LH discharge, 1000 PTO, s/n26J021920
- Real Industries Squeeze chute w/palp cage
- (2) 12' Portable wooden cattle loading chutes on wheels
- Miami 650-bushel creep feeder on skids
- Miami 400-bushel creep feeder on skids
- (2) Miami 250-bushel creep feeders on wheels w/feed panels, mineral stations
- Ranchers 250-bushel creep feeder on wheels w/feed panels
- Silverlake trailer style post pounder w/post cradle
- S/A fencing wagon w/mounted checker plate tool box, wire roller
- (21) inverted tire feeders
- Hay-Saver Rd bale feeders
- standard Rd bale feeders
- skirted Rd bale feeders
- 10' metal trough feeders
- (4) 30' bunk line feeders – drill stem frame & belt bottom w/cable holders
- 30' drill stem Ally-Way, 5-bar free standing w/360-degree gate hinge on one end
- (2) Hi-Qual maternity pens
- post mount auto-catch headgate
- Selection of 30' Free standing panels
- Selection 24' Free Standing panels
- Several 29'-31' drill stem framed feed bunks w/rubber belting bottom
- Selection of 1" Sq tubing panels – various sizes
- feed panels
- Portable wind break panels w/Z-Channel
- Selection of gates – various sizes
- cattle oilers
- Ritchie water bowl
- Big poly stock water trough
- Hammer mill, PTO drive
- Large selection of Vet Supplies – pullers, dehorner, tag guns etc.
- Solar panel water pump & trough systems
- Selection of electric fencers, solar panels
- (2) Hyd wire rollers
- rolls of wire – barbed & Hi Tensile
- roll of mine belting
- treated fence posts – new & used
- Post hole digger

3PT & OTHER EQUIPMENT:

- 10' Degelman front mount blade w/all new hoses, mounts to JD 40 or 50 series tractor, s/n6515
- 7' JD 709 Trail style rotary mower
- 7' JD bar Mower
- (2) 4-wheel farm wagons

BINS:

- 3500-Bushel Behlen bin on hopper cone w/Aeration
- 1500-Bushel Friesen hopper bottom bin

TANKS & PUMP:

- 1000-gal fuel tank w/115-volt pump & meter
- 500-gal fuel tank w/115-volt pump
- 1250-gal poly water tank
- 3" Monarch pump w/Industrial gas engine
- Approx 2500' of 4" Aluminum irrigation pipe
- 2" Honda water pump

LAWN & GARDEN, LEISURE:

- 2010 Honda 420cc Rancher 4x4 Quad w/front & back racks, reverse, 949hrs showing, 6165-miles showing
- Can-Am Maverick 1000R Side by Side UTV w/side nets, back rack, 3722kms showing
- 2010 Kawasaki KX85 Dirt Bike, VIN#JKBKXFAC5AA049891
- 2009 Kawasaki KX250F Dirt Bike, VIN# JKAKXNMCW19A013113

SHOP EQUIPMENT & MISC:

- Small selection of farm related tools
- Tack boxes
- tool boxes
- wooden pigeon hole bins
- Knock-on shovels
- truck box
- Rough cut dimensional lumber
- pallet of steel & lumber
- steel beams
- Large selection of 2x8 lumber
- steel – C & Z channel
- Drill stem pipe
- Hydro poles
- Used truck tires & rims
- Used Hwy tractor tires & rims
- Mini bulk bags

CONSIGNED Claire Manshreck 204-747-2292

- CaseIH 8480 soft core rd baler
- NH195 T/A Manure spreader w/single beater
- 20' Sokal T/A stock trailer w/single partition gate, 16" rubber, 5th wheel style hitch (NO TOD)
- 6' 3pt cultivator
- 3PT bale fork
- 1000-gal galvanized water tank
- Galvanized stock water tanks
- Trailer full of Vet Supplies – Assortment
- Lewis DBL wick cattle oiler w/mineral tub
- bunk feeders
- treated fence posts
- steel fence posts
- wire mesh livestock panels
- Used car & truck tires
- front bumper guard for a Dodge truck

CONSIGNED Darryll Breemersch 204-522-3557

- Case IH PT Swather w/ batt reel (shedded)
- Hi-Qual calf chute/tipping table
- Beaver Creek squeeze chute w/palp cage
- 2000-Gal poly water tank

See www.fraserauction.com for complete listing

FRASER AUCTION SERVICE LTD.

Brandon, MB Auctioneer: Scott Campbell / Jesse Campbell

P: 204-727-2001 F: 204-729-9912 TF: 1-800-483-5856 E: office@fraserauction.com www.fraserauction.com

Licensed and bonded. P.L. License #918093. Member of M.A.A., S.A.A., A.A.A., A.A.C.

NOTE: Cheques of \$50,000 or more must be accompanied by bank letter of good standing. For more information on this please call Fraser Auction 204-727-2001

Not responsible for errors in description. Subject to additions and or deletions. Property owners and Fraser Auction Service not responsible for any accidents. GST & PST where applicable. TERMS: Visa, MasterCard, Debit, Cash or cheque.



ROB & BOB WILLMAN

FAMILY FARM

RETIREMENT AUCTION

GRISWOLD, MB. | WEDNESDAY, APRIL 22nd | 12:30pm

For more information, contact seller Rob Willman (Cell) 204-724-4974 or (Home) 204-483-2551

DIRECTIONS: (NE 7-9-22W) 49.731988, -100.440099

From Griswold, MB. (Jct #1 & #21 Hwys), 4.8kms south on #21 hwy to RD50N (Chestnut Road), 1.6kms east on RD50N, 0.8kms south to sale site on west side. Lane #49086

From Jct of #2 & #21 Hwys (West of Souris, MB.), 13kms north on #21 hwy to RD50N (Chestnut Road), 1.6kms east on RD50N, 0.8kms south to sale site on west side. Lane #49086

Watch for signs Sale Day.

ORDER OF SALE: (There will be almost no small items to sell so don't be late!) 12:30 (tires, rims, spacers, misc items) 1:00 (Internet bidding starts) Equipment starts to sell



LIVE INTERNET BIDDING WILL BE AVAILABLE AT THIS SALE www.fraserauction.com



TRACTORS:

- 2004 JD 9520 4WD 450hp tractor w/5 remote hyd, 2 returns, 1000 PTO, Firestone 800/70R38 duals, 18 spd power shift, Green Star Ready, full rear weight pkg, new updated series water pump in spring 2019, std hyd pump, 6318hrs showing, s/n021234
- 1990 JD 8760 4WD 300hp tractor w/4 remote hyd, return, 650/65R38 duals, quad range trans, 7336hrs showing, s/n002684

HARVEST EQUIPMENT:

- 2004 JD 9660 STS Combine w/JD 914P pick-up header, Seed Saver, hopper topper, roll tarp, long auger, fine cut chopper, 800/70R38 single front, 18.4-26 deep lug rear, JD Brown Box monitor, yield/moisture sensor in hopper New 2019, 2476 rotor hrs showing, 3360 Eng hrs showing, s/n706845 (Willman Family purchased combine at 1800hrs showing with work orders from Enns Brothers before purchase of approx \$30,000)
- 1997 JD 9600 SP Combine w/JD 914 pick-up head, grain saver, long auger, fine cut chopper, chaff spreader, 30.5L-32 Good Year front rubber, 14.9-24 Good Year rear rubber, JD sieves, 2816 Sep hrs showing, 3935 Eng hrs showing, s/n671045 (all work order done at Enns Brothers: Within the last 500hrs – NEW – floor in header, feeder chain, feeder chain drive shaft, rub bars, beater grates, sprocket, concave, sieves, and sieve frame)
- 2009 30' JD 630F Flex header w/pick-up reel, quick attach, Horst 4-wheel transport, auto height sensors, s/n731100
- 2007 JD 4895 SP Swather w/30' Honeybee Header, poly pick-up reel, Lateral capability, single knife drive, 902 cutting hrs showing, 1133 Eng hrs showing, s/n330211
- JD axles extensions for JD 9600 combine duals
- 8' metal swath roller
- 6' metal swath roller

TRUCKS:

- 1995 Freightliner FLD 120 Hwy Tractor w/bunk, 22.5 rubber, M11 Cummins engine, 370HP, 10 Spd trans, 12,000lbs front, 40,000 lbs rear, 096,389kms showing, VIN# 2FUYDMD88SA715716, SAFETIED
- 1995 Ford Aeromax L9000 Hwy tractor w/day cab, 22.5 rubber, M11 Cummins engine, 10 spd trans, 131,700kms showing, VIN# 1FTYY95V8SVA17283 (sold As Is)

TRAILERS:

- 2012 Load King Prestige Super B Grain Trailers w/air ride, roll tarp, dual hoppers, 22.5 rubber, air gauges, Lead VIN# 2LDHG2834CF054275, Pup VIN# 2LDHG3025CF054276, SAFETIED (1 owner not commercially used)
- 1999 48' Load King T/A High Boy Flat Deck Trailer steel/aluminum combo w/22.5 rubber, air gauge, VIN# 2LDPF4825XA038399, SAFETIED

SEED & TILLAGE:

- 1999 36' Bourgault 8810 air seeder w/Bourgault 2155 Dual compartment air tank, 8" spacing, 4 bar mounted harrows, knock-on spoons, self-loading auger, single hyd fan, (Tank dual chute capability), granular kit, Drill s/n824553, Cart s/n7909
- 36' Bourgault 4000 wing-up coil packers w/P20 coils, light kit, s/n35888WT
- Eversman 650 hyd scraper, approx 6.5-yard capacity, s/n4625

GRAIN HANDLING:

- Super B 115-bushel Continuous Grain Dryer w/running gear, auto batch, 1PH, 230 Volt, 958hrs showing, s/nAS06G12101872, shedded
- 8"x51' Westfield TF80-51 Auger w/self-mover kit, Kohler electric start engine, cold weather kit, s/n176022
- HD8-1800 Sakundiak Auger w/Hawes 4-wheel mover kit, 30HP Kohler Command Pro, cold weather kit, electric clutch, s/n321127
- 7"x45' Sakundiak auger (no motor), s/nNA
- 6"x10' Johnson transfer auger w/Power Ezee motor

LIVESTOCK EQUIPMENT:

- 2005 JD 457 Silage Special rd baler w/Mega Wide Plus pick-up, dual arm twine tie, 540 PTO, Approx 25,000 bales, s/n320589 (1 owner)
- 9-wheel Gehl WR219 hay rake, s/n6860
- NH 185 T/A manure spreader w/poly floor, single floor chain, DBL beaters, 540 PTO, s/n873838 (1 owner)

OTHER ITEMS:

- 2013 Trinity 500-gal propane tank (like new)
- (4) 1600-Gal Endura-Plas black poly water tanks w/2" plumbing
- 2" Pacer water pump w/B+S engine
- JD rims & spacers – fits 23.1-26 rubber
- (4) Good Year 23.1-26 tires on JD rims off JD sprayer
- maybe a few small farm related items, but very little

See www.fraserauction.com for complete listing

FRASER AUCTION SERVICE LTD.

Brandon, MB Auctioneer: Scott Campbell / Jesse Campbell

P: 204-727-2001 F: 204-729-9912 TF: 1-800-483-5856 E: office@fraserauction.com www.fraserauction.com

Licensed and bonded. P.L. License #918093. Member of M.A.A., S.A.A., A.A.A., A.A.C.

NOTE: Cheques of \$50,000 or more must be accompanied by bank letter of good standing. For more information on this please call Fraser Auction 204-727-2001

Not responsible for errors in description. Subject to additions and or deletions. Property owners and Fraser Auction Service not responsible for any accidents. GST & PST where applicable. TERMS: Visa, MasterCard, Debit, Cash or cheque.



BOB & SHARON WIELER RETIREMENT FARM AUCTION

CRYSTAL CITY, MB. | THURSDAY, APRIL 23rd | 12:00pm (Noon)

For more information, contact Bob & Sharon Wieler (Cell) 204-825-7070 or (Home) 204-873-2216

DIRECTIONS: (NE 29-1-10W) 49.07338, -98.78453

West Jct of #3 & #34 hwy (South of Crystal City, MB.), 11.3 kms east on Rd 6N (Eton Rd) to Rd 59W (Robertson Rd), 1.6 kms south on Rd 59W to Lane #4157 on east side

From: Jct #242 hwy & Rd 6N (Eton Rd) South of La Riviere, MB., 8.1 kms west on Rd 6N (Eton Rd) to Rd 59W (Robertson Rd), 1.6 kms south on Rd 59W to Lane #4157 on east side

From: Canada/USA Border (Hannah, ND. Crossing), 11 kms north on #242 hwy to Mile 6 (Rd 6N) Eton Rd, 8.1 kms west on Rd 6N (Eton Rd) to Rd 59W (Robertson Rd), 1.6 kms south on Rd 59W to Lane #4157 on east side Watch for signs Sale Day.

ORDER OF SALE: 12:00 PM (Tanks, pumps, shop items, misc items, ect.) 12:30 PM (Internet bidding starts. Equipment starts to sell)

LIVE INTERNET BIDDING WILL BE AVAILABLE AT THIS SALE www.fraserauction.com



TRACTORS:

- 2014 NH T9.450 4WD Tractor 405hp w/4 remote hyd w/ Aux & return, 710/70R42 duals, std flow hyd, Intelli View IV monitor with mapping, fully hyd integrated auto steer, 1865 drive line hrs showing, 2730 eng hrs showing, s/nZEF219789
- 2000 NH 8770 MFWA Tractor 190hp w/Super Steer, 18.4R42 duals rear rubber, 14.9R30 front rubber, complete front suitcase weights, 1000 PTO, 3PT, 4 remote hyd, 3637 hrs showing, s/nD422165
- 1973 JD 2130 2wd Tractor 75hp w/JD 145 loader, 3pt, 2 remote hyd, 4 speed Hi-Lo trans, 540 PTO, s/n127733

HARVEST EQUIPMENT:

- 2008 NH CR9070 SP Combine w/NH pick-up head, Swath Master pick-up, long auger, hopper extensions, 520/85R42 duals-front, 600/65R38 singles back, chaff spreader, fine cut chopper, Intelli View Plus II Monitor with GPS mapping, 1561 threshing hrs showing, 2017 eng hrs showing, s/nHAJ111291
- 40' Honey Bee SP40 Str Cut header w/self-transport, pick-up reel, pea auger
- 2008 MF Hesston Series 9435 SP Swather w/30' Header, mounted 10' poly Mandako swath roller, 847hrs showing, always shedded, s/nHT92420

SPRAYER:

- NH SF 550 SP Sprayer w/80' booms, 660-gal S/S tank, 2 sets of rubber, 12.4-38 narrow In-crop rubber, 23.1-26 wide flotation rubber, 4 Tridekon S/S dividers, Trimble auto system with Ezee Steer wheel motor, 5 section boom controls, variable rate, foam marker kit, 2" fill plumbed, on board pressure washer, 3227hrs showing, Raven SCS 661 Sprayer controls w/3-way nozzle bodies, s/n735025

SEED & TILLAGE:

- 39' Morris Maxum II Air Seeder w/10" spacing, 4" rubber packer, 2 bar harrows, knock-on spoon openers, Morris 7240 variable rate-controlled tank, dual chute capability, 23.1-26 Diamond Tread rear rubber, 21.5-16.1SL Diamond dual caster front rubber, 7" self-load auger, s/n3902004623 drill, s/n7249701126 cart (sell as complete unit)
- 84' Hi-Line Stubble Buster Mid Harrows w/New 16.5L-16.1SL main frame rubber, s/n95B1816
- 54' Bourgault 9400 tillage w/Summers mounted heavy harrows, bolt on spikes have only done approx 1800 acres, s/n824954
- 45' IH 5500 chisel plow w/Raven Super Cooler NH3 Pkg, carbide tips NH3 openers, variable rate control box, 2 Bar mounted harrows, tank hitch
- 42' Saturn Deep Tillage w/12" spacing, 3 bar harrows, Gaber sweeps
- 35' CaseIH 4700 Vibra tiller w/3 bar Flexi Coil

mounted harrows, sweeps, tank hitch

- 95' Summers hyd harrows, good tines, s/nE0155
- 55' Inland hyd Harrows w/tines-like new
- 10' Deep Tillage w/3 bar Degelman harrows
- (2) Crown Fork type Stone pickers

TRUCKS:

- 2013 Kenworth T800 tandem axle Hwy Tractor w/Day cab, 485 Packer engine, 13 over trans, wet kit, 12,000 lbs front, 40,000 lbs rear, 22.5 rubber, Nav system, 646, 961 Original Kms, VIN# 1XKDDP9X8DJ961044, SAFETIED
- 1988 IH Eagle tandem axle Grain Truck w/New 20' Load Line box in fall of 2017 & hoist, pwr roll tarp, 24.5 rubber, full poly fender pkg, back LED lights, remote pwr tailgate & hoist, 3406 CAT B Block engine, 13 over trans, VIN# 2HSFEX2R5JC011755, SAFETIED
- 1967 Chev C30 S/A truck w/flat deck & hoist, 350 Chevy engine, 4 spd standard trans, 99,163 miles showing, VIN# CE3391809594

TRAILERS:

- 2014 37' Load Line Triple Axle End Dump Grain Trailer w/roll tarp, complete poly fender kit, front & rear axles-air lift, split compartment, 3-way end gate for seed & fertilizer, 22.5 rubber, rear hoist controls, VIN# 2D9ED3727E1012433, SAFETIED
- 2012 20' PJ Flat Deck tandem Axle Trailer w/2-7000 lbs axles, beaver tails, hide-away ramps, checker plate metal fenders, wooden deck, VIN# 4P5CC2029C1168371
- 1987 26' Fruehauf Flat Deck Trailer (Lead trailer) w/8' deck built over 5th wheel, 24.5 rubber, sells with (2) 2000-gal Green poly water tanks, 70-gal Chem mix system, Honda 2" pump, VIN# 2H8P03324HR042701, SAFETIED
- 14' S/A Grain Box Wagon w/hyd hoist, 9.00-20 rubber, Tractor pull, NO TOD-FARM USE ONLY

GRAIN HANDLING:

- REM 2100 Grain Vac w/1000 PTO, metal flex hose & rubber flex hoses, poly in-bin nozzles, s/nRM-01-2100-5169
- 13"x70' Farm King PTO Swing Hopper auger w/hyd mover on hopper, DBL augers in hopper, reversing gear box, 1000 PTO, hyd winch, s/nY137014000113
- 10"x60' Farm King PTO Swing Auger w/540 PTO, single auger in hopper, s/n9100833
- 8"x56' Westfield PTO auger
- 8"x36' Farm King Auger w/16HP B+S Vanguard engine (7-yr old), s/n1210526711
- 7"x36' Westfield seed treating auger
- Westfield tailgate mount drill fill auger
- poly auger hoppers
- 10HP Honda Auger motor w/rope pull

INDUSTRIAL:

- Massey 300 Loader/Back-hoe open station w/Model 320 Back-hoe, toothed digging bucket on back-hoe, smooth edge bucket on tractor, 16.9 rear rubber, 900/15 front rubber, 6888hrs showing, s/n1196002656
- 36' truck scale frame & beams, no floor
- 2-yard SM Brand Hyd scraper, s/nCG7148

3PT EQUIPMENT & ATTACHMENTS:

- HD Allied 1080 DBL Auger 3PT Snow Blower w/1000 PTO, hyd chute adjustment
- 6' Farm King 620 3PT Rotary Mower
- 5.5' 3PT mount hyd broom

TANKS:

- 1000-gal Fiberglass water tank w/2" valve
- 1000-gal Westeel fuel tank w/2yr old GPI Model M3130 high volume 115-volt pump
- Skid Tank w/GPI 12-volt pump

BINS & FANS:

- (2) SK 1820 Stor-King hopper bin (lined), skid, aeration, 5 hp fans, temp cables
- Grain Max 5300 hopper bin, skid, rocket air, 5hp fan, moisture temp cable
- Stor Max OPI hand held grain temp & moisture monitor
- Caldwell Inline aeration fan - new motor in 2019 - 28"

SHOP EQUIPMENT:

- BE 3500 PSI, 4-GPM hot water pressure washer w/Honda engine
- 350,000 BTU Master DSL shop heater
- Island shop shelving on wheels
- A-Frame shelves on wheels

MISC:

- Gallagher B160 Power fence energizer (fencer)
- (8) FM programmable radios (mostly Motorola)
- 4'x8' Insulated dog house (2 dog), roof comes off for easy access (like new)
- Model 919 Grain moisture tester
- SVLT0 Barrel Def pump; 12 v
- Lincoln AC-225 stick welder
- Home built sprayer jack
- Truck pro-heat
- Air operated metered oil pump
- Antique Empire cookstove
- Plus a few other farm related misc items

See www.fraserauction.com for complete listing

FRASER AUCTION SERVICE LTD.

Brandon, MB Auctioneer: Scott Campbell / Jesse Campbell

P: 204-727-2001 F: 204-729-9912 TF: 1-800-483-5856 E: office@fraserauction.com www.fraserauction.com

Licensed and bonded. P.L. License #918093. Member of M.A.A., S.A.A., A.A.A., A.A.C.

NOTE: Cheques of \$50,000 or more must be accompanied by bank letter of good standing. For more information on this please call Fraser Auction 204-727-2001

Not responsible for errors in description. Subject to additions and or deletions. Property owners and Fraser Auction Service not responsible for any accidents. GST & PST where applicable. TERMS: Visa, MasterCard, Debit, Cash or cheque.



MALCOLM WILD FARMS RETIREMENT AUCTION

WESTBOURNE, MB. | FRIDAY, APRIL 24th | 10:00am

For more information, contact seller Malcolm Wild (Cell) 204-856-6678 or (Home) 204-445-2034

DIRECTIONS: (SW34-14-9W) 50.231982, -98.627578

From Jct #50 & #16 Hwy, 3.6kms east on #16 to Rd 51W 9.8kms north on Rd 51W to sale site on east side

From Westbourne, MB., 3.7kms west on #16 to Rd 51 west 9.8kms north on Rd 51W to sale site on east side

ORDER OF SALE: 10:00 (misc, parts, tools, shop items, tanks & pumps) 1:00 (Internet bidding starts) Bins, fans then major items begin to sell

Engine oils and filters were all changed winter of 2019/2020



LIVE INTERNET BIDDING WILL BE AVAILABLE AT THIS SALE www.fraserauction.com



TRACTORS:

- 2015 Versatile 375 4WD 375HP Tractor w/4 remote hyd, return line, 1000 PTO, 520/85R42 duals, fully integrated hyd auto steer, Outback Guidance, ADO 7" Monitor, standard trans, 4 spd, Deluxe cab with heated & cooled seat, High volume hyd pump, 2114hrs showing, s/n307860 (1 owner)
- 1995 JD 8770 4WD 300HP Tractor w/4 remote hyd, like new 520/85R42 duals, Quad range trans, newer rear diff & front dampeners, Outback 360 Guidance System, Hemisphere Dome, 7874hrs showing, s/n003367
- 1995 JD 7400 MFWA 111HP Tractor w/JD 740 self-leveling loader, bucket, grapple, joystick controls, dual PTO, 3PT, 2 remote hyd, Power Quad trans, 18.4-38 new rear rubber, 13.6-28 new front rubber, front fender kit, 10,200hrs showing, s/n003505
- JD 3140 2wd tractor w/Leon 690 loader, bucket, 2 remote hyd, dual pto, 3pt, 18.4-34 singles, Power Syncro trans, 9628hrs showing, s/nNA (Following work all done less than 50hrs ago – rebuilt starter, rebuilt alternator, new batteries, new hyd pump, new steering motor, rebuilt hyd valves, rebuilt hi/lo in trans)

GUIDANCE SYSTEMS:

- (2) Outback Guidance Systems (older) light bars

HARVEST EQUIPMENT:

- 2008 JD 9870 STS Combine w/JD 615P pick-up head, rear wheel assist, hopper ext, long auger, fine cut chopper, chaff spreader, 800/70R38 singles front rubber, 28L-26 rear rubber, Greenlight Inspection prior to Harvest 2019, GreenStar ready, JD Auto Trac steering wheel (needs electronics) 1605 sep / 2338 eng hours showing, s/n725514
- 1993 JD 9600 Combine w/JD 914 pick-up, long auger, hopper ext, fine cut chopper, chaff spreader, JD sieves, new rubber, 2580 sep / 3350 eng hours showing, s/n
- Unverferth Grain Cart w/approx 700-bushel capacity, PTO unload, 13" unload auger, roll tarp, 24.5-32 Firestone rubber, light kit, s/nB20590137
- 2015 35' JD 635F Hydra Flex Straight Cut Header w/poly dividers, secondary dividers, no transport, s/nCG0785272
- 1994 30' JD 930 Flex Header w/pick-up reel, poly fingers, 2-wheel Moulson's transport, s/nF656147
- 2001 Premier 2940 SP Swather w/25' head, pick-up reel, DBL swath attachment, single spd hydro, 2874hrs showing, s/n138983, always shedded
- Set of Trelleborg Rice Tires 600/55-26.5 w/Premier Rims – for MacDon or Premier swather
- 8' Metal swath roller
- JD Portable Moisture tester
- Labtronics 919 Moisture tester

TRUCKS & TRAILER:

- 1999 IH 9200 Eagle T/A Grain Truck w/Walk-In Pro Sleeper, 20' Berg's B+H, Roll tarp, Rear hoist controls, Cummins N14 DSL Engine, 18 Spd Trans, NEW 11R22.5" Rubber, Recent Engine & Clutch, 1,095,922 showing, VIN#2HSFMAHR5XC065895, SAFETIED
- 1994 Freightliner FL120 T/A Grain truck w/19' High side B+H, 9 spd Eaton Fuller trans, CAT engine (high HP) 11.5R24.5 rubber (like new) newer transmission, 823,789 showing, VIN#2FUY3EDB9PA447470, SAFETIED
- 1985 Ford 9000 T/A Grain Truck w/22' B+H, 9 spd trans, M11 Cummins Eng, roll tarp, 22.5 newer rubber, 642,726 showing, VIN#1FDZY90W7FVA26059
- 1978 Ford 600 S/A Grain Truck w/5+2 trans, 330 gas engine, mounted 1200-gal V-bottom poly water tank, 10.00-20 rubber, small deck on back, 86,610 miles showing, SAFETIED
- Chev C-70 Tag Axle Grain Truck w/18' B+H, Box extensions, 10.00 rubber, 113,000 showing

SEED & TILLAGE:

- 2012 90' Farm King 1200 High Clearance PT Sprayer w/460/85R38 rubber, dual kit, 1200-gal poly tank, 3-way nozzle bodies, 5 section boom controls, hyd pump, s/n10SP1200136
- 2004 42' Bourgault 5710 Series II Air Seeder w/2004 Bourgault 5350 triple compartment air tank, mid row banders, 9" spacing, 3" rubber over steel packers, new 2" carbide tip Bourgault openers, all new hoses-front & back, Deluxe HP-491 Monitor, dual fans, DBL chute, Air Seeder s/n37914AH-14, Tank s/n37945AS-09
- 2015 41' NH ST830 Tillage w/3 bar heavy harrows, 4 caster front frame, s/nYCS003233
- 2016 16' Versatile SD650 Off-Set Disc w/Rock Flex, s/nSD65015054930
- 70' Degelman Strawmaster 7000 Heavy Harrows w/hyd angle, tines only done two seasons, s/n3444 (1 owner)
- 41' New Noble 8000 Tillage w/3 bar Ezee-On Harrows, floating hitch, all new shank assemblies put on in 2019
- 1989 39' CaseIH 4900 Vibra Tiller w/7" spacing, floating hitch, 3 bar harrows
- 33' IH 55 Chisel Plow w/beaver tails (one side new)
- 50' Blanchard Harrow Packer Bar w/5 bar harrows, P20 coils
- 20' Case Off-set Disc
- 16' CCIL 204 Tillage
- Degelman 570 Rotary Stone Picker w/Ground Drive
- Degelman Fork Type Stone picker
- Dickie-John variable rate NH3 kit (from 41' unit)

GRAIN HANDLING:

- 10"x70' buhler/FarmKing PTO Swing hopper auger w/single auger in hopper, reversible gear box, 540 PTO, electric winch

- 10"x51' Westfield PTO Swing hopper auger w/single auger in hopper, hyd drive unload, s/n45099
- Sakundiak HD 8-1000 Auger w/Kohler Command Pro 25HP electric start engine, s/n68651

HOPPER BOTTOM GRAIN BINS:

- 5200-bushel Meridian Hopper Bottom Bin w/double skid, aeration rocket, s/n6220130241512
- (2) 3300-bushel Westeel Hopper Bottom Bins w/Westeel hoppers, triple skids, aeration rockets, s/n05855, s/n05772
- 1200-bushel Friesen Hopper Bottom Bin on legs (approx 40-ton capacity)

FLAT BOTTOM BINS (IN CEMENT OR ON CEMENT):

- 6000-bushel Westeel
- (3) 5300-bushel Westeel
- (2) 3450-bushel Westeel
- 3300-bushel Global
- (3) 2911-bushel Behlen
- (2) 1950-bushel Butler
- (2) 1950-bushel Westeel

AERATION FANS:

- (2) Edwards Grain Guard 3HP Aeration Fans
- Edwards Grain Guard 7HP Aeration Fan

OTHER EQUIPMENT:

- 7' Bush Hog 287 3PT Rotary rough-cut mower w/chain guard
- Ag Shield Recon II Hay Crimper w/dual deflection chutes
- 2003 Challenger RB56 rd baler, bale kicker, 540 pto, Auto-Matic series, always shedded, 20,400 bales showing on monitor, s/nHM25521

TANKS & PUMPS:

- (3) 1200-gal Poly water tanks
- Skid tank w/12-volt 15-GPM Fill Rite pump
- Westeel 1000-gal fuel tank w/GPI Hi-Flo pump & GPI meter (2-Yrs old)
- Northern Steel 1000-gal fuel tank w/Fill-Rite 115-Volt pump
- 500-Gal fuel tank w/pump & meter
- 6" floating slough pump w/discharge hose

MISC:

- Set of Quad tracks – fits Can-AM side by side
- Large selection of tires (implement & truck, with & without rims)
- Large selection of farm tools, wrenches, socket, jacks, chains, ect.
- Large selection of farm related parts, and misc.

See www.fraserauction.com for complete listing

FRASER AUCTION SERVICE LTD.

Brandon, MB Auctioneer: Scott Campbell / Jesse Campbell

P: 204-727-2001 F: 204-729-9912 TF: 1-800-483-5856 E: office@fraserauction.com www.fraserauction.com

Licensed and bonded. P.L. License #918093. Member of M.A.A., S.A.A., A.A.A., A.A.C.

NOTE: Cheques of \$50,000 or more must be accompanied by bank letter of good standing. For more information on this please call Fraser Auction 204-727-2001

Not responsible for errors in description. Subject to additions and or deletions. Property owners and Fraser Auction Service not responsible for any accidents. GST & PST where applicable. TERMS: Visa, MasterCard, Debit, Cash or cheque.



RONALD FARMS

THE ESTATE OF NEIL RONALD

FARM AUCTION

POPLAR POINT, MB. | FRIDAY, MAY 1st | 9:00am

For more information, contact Dennis Ronald 780-416-2882



DIRECTIONS: 50.040265, -98.013378

From (Jct#1 & 430 Hwys), 9.6 kms north on #430 hwy to sale on west side (Lane #70070)

From (Jct#26 & 430 Hwys), 1km south on #430 hwy to first yard on west side (Lane #70070)

Watch for signs Sale Day.

ORDER OF SALE: 9:00 (misc items, pallet lots, tools, shop equipment) 11:30 (cattle handling items, panels, gates, feeders, etc) 1:30 (Internet bidding starts)
Equipment starts

LIVE INTERNET BIDDING WILL BE AVAILABLE AT THIS SALE www.fraserauction.com



TRACTORS:

- 2014 NH TV6070 BIDI Tractor 155hp w/NH 84LB loader, bucket, grapple, manure forks, 3PT, dual PTO & 4 remotes plus Aux loader end, 16.9R38 singles, rear wheel counterweights, 2066hrs showing, s/nRVS141199
- 2013 NH TV6070 BIDI Tractor 155hp w/NH 84LB loader, bucket, grapple, manure forks, 3PT, dual PTO & 3 remote hyd loader end, 16.9R38 singles, rear wheel counterweights, 5112hrs showing, s/nRVS140242
- 1981 Versatile 875 4Wd tractor 280hp w/4 remote hyd, 20.8R38 rubber, standard trans, 5178hrs showing, s/n056097
- 1967 Case 930 Comfort King 2WD Tractor 89hp w/cab, 2 remote hyd, 540 PTO, standard trans, 18.4-34 single rubber, 3971hrs showing, s/n8316378
- 1967 Massey Ferguson 135 2WD Tractor 45hp w/540 PTO, 3PT, 12.5-28 rubber, no hour meter, s/n9A131725

HAYING EQUIPMENT:

- 2010 12' MF/Hesston 1372 Discbine w/steel on steel crimp, 1000 PTO, s/nAHM01207
- 1994 16' Case/H 8380 Haybine w/rubber on steel crimps, s/nCFH0010357, field ready
- 2012 NH HT154 12 Wheel V-Rake, s/n234025 (used 2 seasons)
- MF/Hesston 2956A Auto Cycle rd baler w/net wrap, 1000 PTO, pick-up roller, twine tie & net wrap, 21.5L-16.1SL floatation rubber, s/nAFHR13227 (used 2 seasons)
- 1996 Case/H 8465 Automatic rd baler w/twine tie, 540 PTO, hyd dual tie arms, bale kicker, Approx 12,000 bales, s/nCFH0122104
- 7' IH trailer style bar mower
- Antique McCormick Deering No7 Sulkie mower
- 3pt 2-wheel swath turner
- boxes of baler twine
- (2) rolls of net wrap

FEED PROCESSING EQUIPMENT:

- NDE 804 tandem axle vertical auger mixer feed wagon w/right hand discharge, 15.0/55-17 rubber, 1000 PTO, Avery Weight-Tronix Model 640XL scale head, light kit, s/n3728 (like new unit)
- Jiffy 920 bale processor w/left hand discharge, 1000 PTO, s/nJSB20000230

HARVEST EQUIPMENT:

- 1986 Gleaner R7 SP Combine w/Melroe 388 pick-up, 30.5L-32 Front rubber, 14.9-24 Diamond Trend rear rubber, chopper, chaff spreader, 2349 sep hrs showing, 3208 engine hrs showing, s/nR7G007071118686?
- 1980 21' CCIL 550 SP Swather w/cab, gas engine, pick-up reel, batt reel, rubber slat canvas, s/n20295
- 30' JD 590 PT Swather w/batt reel, wood slat canvas, s/n002659
- 8' Douglas Poly Swath roller
- Labtronics LT919 moisture tester

GRAIN TRUCKS & VEHICLES:

- 1991 Freightliner FLD112C tandem axle grain truck w/19' B&H, roll tarp, rear hoist controls, 22.5 rubber, 350 CAT, 13 spd trans, 762,210Kms Showing, VIN#, SAFETIED, (For more Information call Dwayne Leslie 204-267-2730)
- 1980 GMC 7000 tandem axle grain truck w/19' B&H, roll tarp, 10.00-20 rubber, V8 gas engine, 5 speed twin stick trans, 01,236showing, VIN#T47DEAV608874
- 1975 Ford 880 tandem axle grain truck w/18"x66" B&H, slide back tarp, 10.00-20 rubber, 9 spd 2 stick trans, 477 gas engine, 03,805 miles showing, VIN#T88JVV95273

TRAILERS & WAGONS:

- 16' Midland tandem axle grain pup trailer w/roll tarp, 10.00-20 rubber, telescopic hoist, pintle hitch, VIN#, SAFETIED, (For more Information call Dwayne Leslie 204-267-2730)
- 2006 24' Wilson tandem axle 5th wheel stock trailer w/ DBL partition gates, roll up back door, ST235/85R16 rubber, VIN#1W1B4AJCX6H530794
- 1991 16' Sokal Industries tandem axle stock trailer w/single partition, 15" rubber, VIN#2SCA2X5B2M113261
- 2002 24' Norbert's tandem axle 5th wheel flat deck trailer

w/beaver tails, fold down ramps, LT235/85R16 rubber,

- VIN#2N9F7S9221G017519
- 48' tandem axle high boy flat deck trailer w/single axle converter, bale trailer – NO TOD -FARM USE ONLY
- 4 Wheel farm wagon w/wooden deck – NO TOD-FARM USE ONLY
- S/A Wagon w/dump box – NO TOD-FARM USE ONLY
- New Way S/A wagon – NO deck – NO TOD-FARM USE ONLY

VEHICLES:

- 2008 Ford F350 Super Duty Lariat crew cab 4x4 short box w/auto trans, 6.4l Power Stroke DSL, fully loaded – leather interior & power windows & doors, VIN#1FTWW21RX8EA07110
- 1995 Ford F350 XLT Reg Cab 1 Ton Dually w/10' Checker plate flat deck, headache rack, ball hitch, 4x4, auto trans, 7.3l Turbo DSL, VIN# 2FDKF38F2SCA07816
- 1994 Ford F250 2wd Reg cab pick-up w/8' long box, ball hitch mounted, 5 speed stand trans, 7.3l DSL, 350,387kms showing, VIN#2FTHF25M1RCA38352
- 8' metal truck box w/headache rack
- 1981 Mercury Grand Marque car, 36,063showing, VIN#1MEBP85G7BZ627851

SEED & TILLAGE:

- Eagle Model 4A Rotary ditcher w/1000 PTO, full hyd adjustment on discharge chute, s/nBW12982, (For more Information call Dwayne Leslie 204-267-2730)
- 40' CCIL 807 Air Seeder w/1203 Chinook Air Cart, 9.5" spacing, 3 bar harrows, disk markers, self-load auger, tandem walking beam axles on rear, casers on front, DSL engine powered fan, s/n66014-00056
- 60' Rite Way harrow packer bar w/5 bar harrows, P20 coils, s/n1990-420
- 52' Western Diamond harrow bar w/hitch mount poly tank
- 41' Frigstad deep tillage w/3 bar harrows, s/nB81204
- 31' Versatile 7600 tandem disc w/smooth blades front & back, scraper kit, s/n4742
- 14' CCIL Deep Tillage w/3 bar harrows
- (2) JD 3100 6 bottom plows hooked in tandem (sold individually)
- 1500-gal NH3 tank on 4-wheel wagon w/floatation 16.5L-16.1 rubber, NOT CERTIFIED
- 9' Antique steel wheel cultivator

GRAIN HANDLING:

- Vertec BT 6600 Propane Grain Dryer w/wet & dry augers, s/n6687089, NOT CERTIFIED
- Walinga 510 Standard Grain Vac w/540 PTO, s/nMT510S-8812-3981-HSXNF
- Hi-Cap counter rotation dual screen grain cleaner on wheels w/2 sets of screens (For more Information call Dwayne Leslie 204-267-2730)
- 10"x61' Westfield PTO swing hopper auger w/single auger in hopper, 540 PTO, mech drive, s/n57502
- 8"x61' Westfield PTO auger, s/n4771
- 8"x51' Westfield PTO auger, s/n-n/a
- 7" Scoop-a-Second Grain Auger w/16HP Kohler Magnum, NOT RUNNING – AS IS
- Galvanized hopper bottom grain tank on 4-wheel wagon
- drill fill
- Selection of poly auger hoppers

BINS:

- (2) Approx 1500-bushel Friesen Hopper bottom bins on legs, no skids, s/n2513 & s/n1475

3PT EQUIPMENT & OTHER:

- 10' shop built hyd box blade scraper, trailer style
- Approx 3-yard Powermatic 300D hyd scraper, s/n133-75
- Silverlake trailer type post pounder, fully hyd w/post cradle, 540 PTO, s/n-n/a
- Inland Post hole auger w/12" & 9" bits
- 7' JD 709 trailer type rotary mower, s/n042160
- 5' Howse 500T 3PT rotary mower, s/n0308110235
- 9' Inland DD110 DBL auger 3pt snow blower w/hyd chute, s/n1127
- Manure forks
- Buhler/Allied 5 tine bale fork

LIVESTOCK EQUIPMENT:

- Huge selection of corral panels – free standing, traditional & gates
- (15-20) panels w/walk through gates – various sizes
- Real Industries Squeeze Chute w/auto catch headgate, palp cage, needs new floor
- Tuff Squeeze chute w/auto catch headgate, palp cage
- (2) 8' Curved S Alley ways – shop built
- shop built crowding tub
- Real Industries post mount headgate
- 32' drill stem metal covered calf shelter
- 29' drill stem metal covered calf shelter
- (2) 12'x 20' Ranchers Welding all steel calf shelters w/gate in front, on skids
- 16' Wooden calf shelter w/metal clad roof
- Easy-Way 225 Bushel creep feeder on wheels w/fold down panel kit, s/n3-225-16-02
- 100 Bushel Reyden Service creep feeder on wheels w/feed panels, rear mineral station
- (20) round bale feeders (skirted & standard)
- (2) 29' Ranch Welding feed wagons, single axles on back
- (2) 29' Free Standing wind break panels w/boards
- (6) 20' Ranchers Welding bunk line steel feeders
- (4) 20' HD all metal bunk feeders
- 15' Ranchers Welding 2 bale feeder
- (4) 16' Tuff steel feed trough
- (3) 16' Real Industries metal feed trough
- Selection of rubber feed tubs
- (8) Mineral truck tire feed stations w/rubber tub inserts
- (3) Can-Arm stock water bowls
- Rubbermaid water trough
- (2) Enduraplast poly water troughs
- (2) 10'x10' Morrand maternity pens w/headgates
- (2) calf sleighs
- Condors poly calf hot box
- Selection of Electric Fencers – Parmak Solar Pack 6 w/solar panels, Parmak 110V, Speed Rite Viper 1500, Parmak 30 Mile Magnum 12, B8355 Plus Fencer
- Selection - Fence posts
- fence tighteners
- Assortment – shovels, pitch forks, rakes, scoops
- selection - 5-gal pails (cleaned)
- Calf pullers
- Assortment of vet supplies

SHOP EQUIPMENT:

- Coleman Powermate 6.5HP 60-gal upright air compressor, single stage
- air hose reel, 50' 3/8" air hose
- All State propane/oxy cutting torch
- Powerfist 220V 2.9-gal per min 2500 psi electric pressure washer
- Super Red Devil pressure washer

See www.fraserauction.com for complete listing

FRASER AUCTION SERVICE LTD.

Brandon, MB Auctioneer: Scott Campbell / Jesse Campbell

P: 204-727-2001 F: 204-729-9912 TF: 1-800-483-5856 E: office@fraserauction.com www.fraserauction.com

Licensed and bonded. P.L. License #918093. Member of M.A.A., S.A.A., A.A.A., A.A.C.

NOTE: Cheques of \$50,000 or more must be accompanied by bank letter of good standing. For more information on this please call Fraser Auction 204-727-2001

Not responsible for errors in description. Subject to additions and or deletions. Property owners and Fraser Auction Service not responsible for any accidents. GST & PST where applicable. TERMS: Visa, MasterCard, Debit, Cash or cheque.



***“ENJOY WHAT YOU DO, AND YOU SHALL
OUR SONS AND THEIR PA***

**THERE WAS A BOY FROM MANITOBA,
WHO WOULD NOT LISTEN TO HIS MOM,
WHEN SHE TOLD HIM - HE SHOULD GO TO SCHOOL!!!**

And as that famous song says “That Boy” came back home a full-fledged “Auctioneer”

JESSE CAMPBELL

In 2017 at 18 years old Jesse decided to pursue a career as an auctioneer and he attended the Global College of Auctioneering in High River, AB. Growing up in the family auction business Jesse always loved to work the sales as a ringman and this seemed like the next step for him. After graduating from auction school Jesse returned home and began to work the sales with the Fraser Auction team and started to earn himself some time behind the microphone. Jesse worked very hard at improving his auctioneers chant and his practice and dedication to his career soon began to payoff for him.

In just 3 years Jesse has become a very proficient and professional young auctioneer and has received numerous accolades for his hard work. In January 2018 less than 1 year after taking his training he attended the Alberta Auctioneers Association convention in Leduc, AB. and entered the auctioneer competition there. He was honored to win the 2018 Vern Scown Memorial Tyro Championship title for rookie auctioneers and his first championship buckle. In May 2018 with the encouragement of his peers, Jesse threw his hat onto the BIG STAGE and entered the 2018 LMAC (Livestock Markets Association of Canada) Canadian Livestock Auctioneers Championships in Whitewood, SK. with cattle auctioneers from all across Canada. At this competition Jesse would sell his first ever draft of cattle. From this event Jesse would take away some experience and a whole new group of peers to be mentored by and look up to. Fast forward one year to May 2019 and the Man/Sask Livestock Auctioneers Championships this time held in Grunthal, MB. At the end of this competition Jesse would end up 2nd over-all in the open competition and be crowned the Top Rookie earning himself the Bob Wright Memorial Championship and his second buckle. Less than a month later Jesse traveled back west to Thorsby, AB. and once again took part in the annual LMAC Championships where he again gained valuable experience from the best in the business. February 2020 would see Jesse back on the road headed west again this time to Drayton Valley, AB. for the Alberta Auctioneers Association Convention and Canadian All-Round Auctioneer Championships. This competition would see Jesse climb the ranks once again and end up bringing home more gold. Jesse was proud to be called up to the podium in third place over-all and receive his 3rd championship buckle.

Jesse has been very fortunate to have earned himself mic time at not only all of our Fraser Auction sales but has also landed himself behind the mic twice a week all winter selling cattle at Gladstone Auction Mart, and Winnipeg Livestock. It is a good thing that he enjoys his time on the microphone because that is exactly where he finds himself most days. May 8th 2020 will see the LMAC Championships being hosted in Manitoba at Heartland Livestock in Virden. If you are able, please try to attend this event and witness some of the very best auctioneers in the business competing for the 2020 Canadian Livestock Auctioneers title. Jesse continues to gain experience in the auction business and is looking forward to seeing you all at sales in the upcoming season. Jesse maintains the number 1 reward for his hard work is the relationships he is able to form with our customers and giving them the very best auction experience possible every day. Congratulation Jesse. SOLD! SOLD!! SOLD!!!



“I’LL NEVER WORK A DAY IN YOUR LIFE” PATHS TO THEIR DREAMS



WHY AGE YOUR WALLEYE? KADE CAMPBELL

Natural Resource Management Technology | Fisheries Management Student
University College of the North

In August 2018 Kade headed north to The Pas, MB. to attend UCN (University College of The North) and pursue his dream of becoming a Conservation Wildlife & Fisheries Officer.

Over time, all living things change and grow. Monitoring this change in species and populations is important. As an avid angler, Fisheries Management student, and a soon to be graduate of the Natural Resource Management Technology Program I am particularly interested in determining the age and growth of Walleye (*Sander vitreus*) and monitoring changes in their population sizes. Why Walleye you ask?

Walleye are not only targeted by recreational and subsistence anglers but also by commercial fishermen throughout the province. Consequently, long-term monitoring of provincial Walleye stocks and determining the age and growth patterns of this desired species is very important for recreational and economic values. Here is why!

Walleye create jobs for many Manitobans. From your local convenience store and ‘bait & tackle’ shop to commercial fishing operations all of us benefit... because who goes fishing without snacks, bait or gas? What I am saying is that Walleye in our province’s rivers and lakes are a big part of the economy. How big you ask?

For instance, Manitoba sold 195,000 fishing licenses in 2017 and did so for the previous four consecutive years (Manitoba Sustainable Development 2019). From these sales, both you and I can confidently estimate using a \$25 license fee that local and non-resident anglers have spent approximately \$19,500,000 in almost a half decade! That is \$4,875,000 per year from licences alone in Manitoba! Bringing this same logic south, and using only the south basin of Lake Winnipeg and the tributaries of the Red River, Walleye angling contributes 111 million dollars per year to Manitoba’s GDP! (Hoye 2019).

If Walleye are this important to our economy, we have to manage this species and we can do this by studying their age and growth. So how does age and growth help us manage this species? Well, by studying age and growth we can estimate population size, life history, maturity, determine exploitation rates, set harvest limits, and evaluate environmental factors.

To study the age and growth of Walleye a sample needs to be captured. Each Walleye in the sample is weighed in grams and the fork length is measured in millimeters. The fork length is measured where the (V) is created in the caudal (tail) fin. This length from nose to the fork in the caudal fin ensures accurate measurements as the tip of the tail is often damaged. After being weighed and measured the gender of the Walleye is determined by examining its gonads (i.e., testis or ovaries). Finally, the first four dorsal spines are removed for laboratory analysis to determine the age of each Walleye captured. How do dorsal spines help determine age?

These spines are sectioned similar to the method for aging trees, and the consecutive rings or annuli are counted in each cross section to provide the age of each Walleye. Better yet, these same annuli can also be measured to determine how far they are apart from each other. Varying distances between the annuli represent each growth year and the difference in growth from one year to the next. In turn, these differences in growth dictate when it may be most beneficial to the angler as well as the Walleye to harvest particular populations so that sustainability of our Walleye stocks, as well as our economy, is achieved.

For example, a Walleye at age 6 or 7 may be growing most productively providing its greatest increase in filet biomass and fecundity (i.e., the number of eggs per ovary) during this specific growth period. Consequently, harvesting the Walleye earlier may not provide the time to increase its filet weight or provide it time to reproduce.

As information regarding age structure of a fish population is a critical component in the Fisheries Management process, these skills are particularly important for me if I want to help conserve our natural resources as an Officer following graduation. My technical commitment to these skills will help to ensure that my work highlights the importance of accurate and robust estimates of age and growth, and how these measurements will help facilitate sound fisheries management in our Province.





DURSTON HONEY FARMS LTD.

APIARIST RESTRUCTURING AUCTION

DAUPHIN, MB. | TUESDAY, MAY 12th | 11:00am



BUSY BEE FARMS

NEIL & CHRIS RIGHI

APIARIST RETIREMENT AUCTION

TISDALE, SK | WEDNESDAY MAY 20th | 11:00am



8th ANNUAL MANITOBA

LIVE BEE AUCTION

FRASER AUCTION BARN | BRANDON, MB. | WEDNESDAY MAY 27th | 5:00pm

NOTE: Since bees are being consigned from Apirists all over Manitoba the sale will be conducted at the Fraser Auction Service Barn in Brandon, MB by video presentation. Buyers wanting to see the bees in person will need to do so prior to sale. Seller contact information will be listed on our website closer to sale date so you can contact them for directions to hive yards and info about their bees.

CONSIGN NOW TO BOOK YOUR SALE ORDER

Sale conducted by FRASER AUCTION SERVICE 1-800-483-5856 www.fraserauction.com



Ag Equipment Reconditioning

Specializing in farm machinery and semi-tractors

BEFORE



AFTER



BEFORE



AFTER



BEFORE



AFTER



BEFORE



AFTER



Hundreds of people came up to me the day of our sale and said they had never seen a better presentation of equipment and even months after people would tell me "man you had everything looking so good". I would tell them Wally and his crew at **Roblin Detail N' Shine** made it happen. If you are having a sale or are selling anything, talk to Wally at **Roblin Detail N' Shine** and they will help you get top dollar.

*Don Waldon WAL-D FARMS, Rapid City, MB.
April 12, 2019*

My brothers and I can't thank Wally and his team at **Roblin Detail N' Shine** enough for the outstanding job they did with our machinery and trucks. Everything was spotless to the most minute detail, helping us obtain some great prices. Thank you so much!

*Duane, Jack, Phil Edwards & families, Deloraine, MB
April 7, 2017*

In preparation for our auction sale, **Roblin Detail N' Shine** provided services to make our farm equipment look very appealing for sale day. We were certain that it was a good investment in both time and money.

*Murray & Linda Mathison, Hamiota, MB
April 18, 2018*

#1 Choice for farm sale clean-up through MB & SK



ROBLIN DETAIL N' SHINE

*Driving up the value of your
equipment is our specialty!*

Contact Wally
204.937.3030
OR
204.937.0720



ARMAND & COLINE VERHAEGHE RETIREMENT FARM AUCTION

STE ROSE DU LAC, MB. | SATURDAY, MAY 23rd | 11:00am

For more information, contact

Armand & Coline Verhaeghe (Cell) 204-447-7541 or (Home) 204-447-2326

DIRECTIONS: (SE 21-23-14W) 50.9934, -99.3619

From Ste Rose du Lac, MB. (Jct #5 & #68 Hwys), 6.4kms south on #5 hwy to #360 hwy (Road 135N Sign for Ste Amelie), 8kms east on #360 hwy to stop sign At stop sign continue 1.4kms east to sale on north side, Lane marker#81013 Rd 135N

From McCreary, MB. (Jct #5 & # 50 Hwys), 24.5kms north on #5 hwy to #360 hwy (Road 135N Sign for Ste Amelie) 8kms east on #360 hwy to stop sign, At stop sign continue 1.4kms east to sale on north side, Lane marker#81013 Rd 135N

From #68 Hwy & Road 82W, 6.4kms south on Road 82W to #360 hwy, 1.4kms east to sale on north side, Lane marker#81013 Rd 135N

Watch for signs Sale Day.

ORDER OF SALE: 11:00am (misc. tools, shop items, parts, tanks, pumps, ect) 12:00pm (livestock related items, panels, gates, feeders, ect.) 1:00pm (bins & fans, major equipment)

NO LIVE INTERNET BIDDING WILL BE AVAILABLE AT THIS SALE www.fraserauction.com



TRACTORS:

- 1979 Versatile 935 330hp 4WD Tractor w/4 remote hyd, return line, std trans, 20.8-38 duals (2 new tires) less than 400hrs on complete engine overhaul, trans rebuilt approx 500hrs ago, 6685hrs showing, s/n071922
- 1989 JD 4255 120hp MFWA Tractor w/JD 280 SL Loader, bucket, grapple, joystick controls, 3PT, 2 remote hyd, dual PTO, Quad range trans, 20.8-38 rear rubber, 16.9-26 front rubber, approx 7200hrs showing (engine rebuilt approx 600hrs ago) s/n001660
- 1983 Case 2390 160hp 2WD Tractor w/3 remote hyd, 1000PTO, 20.8-38 New Factory duals, front weights, Pwr shifts, 6402 hrs showing, s/n9927283
- 1980 Case 2290 130hp 2WD Tractor w/3 remote hyd, dual PTO, pwr shift, Factory 18.4-38 duals, 7325hrs showing, s/n9906475
- 1964 MF 65 DSL 2WD Tractor w/single hyd, 540PTO, 14.9-38 rubber, s/n707102

HARVEST EQUIPMENT:

- 1984 JD 8820 SP combine w/JD 212 pick-up, airfoil sieves, chopper, 2 spd cylinder, Sunny Brook concaves, 3573 hrs showing, s/n600117
- NH 1500 gas sp Combine, always shedded, s/n3906524
- 30' JD 930R Str Cut header w/batt reel, heavy bottom skids, 4-wheel carrier, s/n667225
- 2001 CaseIH 8825HP swather w/25' header, Ull pick-up reel, 1126hrs showing, s/n0200052
- 6' Metal swath roller
- Labtronics 919 moisture tester

HAYING EQUIPMENT:

- 2011 15.5' NH 7460 Discbine w/rubber crimps, only cut 1200 acres approx, s/nYBN090693
- 1999 NH 688 Rd Baler w/gathering wheels, Bale Command Plus monitor, Approx 23,000 bales, twine tie, s/n976615
- NH 269 Square baler s/n1122
- 1999 Highline 1400 Rd Bale picker w/DBL arms, chain unload, s/n9B145679
- Vicon 6-Wheel hay rake
- shop-built S/A hay wagon w/S/A dolly
- (2) stack movers
- Hay moisture tester

TRUCKS:

- 1981 Chevrolet 70 S/A grain truck w/16' B&H, roll tarp, 10.00-20 rubber, 366 gas engine, 5+2 trans, 30,267kms showing, VIN#1GBL7D1B0BV135361, SAFETIED
- 1977 Dodge 600 S/A grain truck w/16' B&H, roll tarp, 9.00-20 rubber, 360 gas engine, 5+2 trans, 77,560 showing, VIN#D61FK7J011120, SAFETIED
- IH Loadstar 1600 S/A grain truck w/16' B&H, V8 gas, 4+2 trans
- 1969 Dodge 600 tag axle grain truck w/14' B&H, 318 gas, 4 spd trans, 94,185 showing, VIN#D6K2J29659
- 1979 Chevrolet C70 T/A truck w/13' Aluminum gravel box, 427 gas engine, 5+4 trans, telescopic hoist, planks on floor in box, 196,943 showing, VIN#C47DB9V139076
- 1989 Ford F250 4x4 Reg cab truck w/351 gas engine, 4 spd OD trans, 233,991kms showing, VIN#2FTHF2H3KCA11063 (MPI - hail WO)
- 14' gravel box (no hoist)

TRAILERS & WAGONS:

- 2008 20' Blue Hills T/A stock trailer w/2 partition gates, Tor-flex 7500 lbs axles, VIN#2B9S2V22X81053013 (Like NEW)
- 1997 24' Saturn triple axle 5th wheel flat deck trailer w/beavertails, fold down ramps, wood deck, 7000lb axles, VIN#2S912B437VW010139
- 4-wheel wagon bale trailer w/rail iron bunks
- S/A farm wagon w/hoist & 1200-gal poly tank

FEED PROCESSING EQUIPMENT:

- 1997 Bale King Vortex 880 bale processor w/left hand discharge, 1000PTO, s/n96771332
- NH 357 Mix Mill w/pwr bale feed, mineral hopper, 4 screens, 2 new side on hammers always shedded, s/n319985

SEED & TILLAGE:

- 60' Compu-Spray field sprayer w/5th wheel truck pull conversion, poly tank, chemical induction tank
- 36' Bourgault 534-44 tillage w/air seeder kit, small seed granular kit, 4 bar harrows, 8" spacing
- Bourgault 2155 air cart w/single hyd fan, s/n2808
- 36' Laurier packer bar w/P30 coils
- 35' Wilrich tillage w/Continental NH3 kit, knock-on carbide tip Eagle Beak knives, 3 bar harrows
- 70' Laurier hyd harrows
- 30' rail iron DBL mole hill drag
- 30' Crow-Foot packer bar (Individual sections)
- 27' Wilrich field cultivator w/long hitch, 3 bar Wilrich harrows
- 25' Co-op 203 tillage w/Continental NH3 kit, 3 bar harrows
- 20' MF Deep tillage
- 14' JD 3000 Off Set Disc w/24" discs, scrapers
- 14' Haul-All seed & fertilizer tender w/hyd augers
- 6 Bottom Melroe plow
- Mel-Cam fork type stone picker
- Degelman ground drive rotary stone picker
- 16' Shop built V-Ditcher, built from Case deep tillage main frame w/14" I-beam blades, 2 hyd cylinder (very well built and works great)

GRAIN HANDLING EQUIPMENT:

- Kendon galvanized gravity box on 4-wheel wagon
- 10"x70' Westfield PTO swing hopper auger w/DBL hopper augers, s/n147956
- 8"x51' Westfield PTO auger w/hyd lift winch, s/n03291
- 8"x45' (1400) Sakundiak auger w/self-mover kit, bin sweep, 20hp Kohler engine, s/n49227
- 7"x45' Brandt auger w/16hp B&S engine
- 7"x36' Westfield auger w/10hp Kohler engine
- poly auger hopper

LIVESTOCK:

- Silverlake Squeeze chute w/palp cage, side access
- Hi-Qual Maternity pen w/Headgate
- Can-Arm water bowl
- Grain-O-Vator DBL hopper PTO drive self-unloading grain wagon (used for feeding cattle)
- 200-bus home-built creep feeder on wheels
- (20) 24' freestanding panels
- (5) freestanding wind break panels

- Selection of 8'-10'-12' steel panels
- Selection of steel gates
- Assorted vet supplies
- selection of fence posts
- electric fencers
- bundles of fence stays
- 30' belt bottom feed trough
- 1/2 tank feed trough
- selection of grain troughs (poly & steel)
- rolls of used barbed wire
- calf puller
- Keystone dehorner
- stock prods

3PT EQUIPMENT & ATTACHMENTS:

- 12' Leon front mount blade, s/n18813-908
- Schulte 9600 3PT snow blower w/hyd chute, 540PTO, s/nB80101086109
- JD 607 trailer type rotary mower
- Laurier 2 prong bale fork (loader mount or 3pt)

BINS & FAN:

- 2700 Bushel Westeel (wide cone) on Peloquin hopper w/aeration
- 2360 Bushel Behlen on Peloquin hopper w/aeration
- 2300 Bushel Westeel-Rosco on Peloquin hopper w/aeration on DBL skid
- (2) 2000 Bushel Westeel-Rosco flat bottom bin on cement
- 2000 Bushel Chief Westland on Peloquin hopper w/aeration
- 1600 Bushel Metal Ind hopper bottom bin w/legs
- (2) 1400 Bushel Metal Ind hopper bottom bins on skids
- 1400 Bushel Friesen hopper bottom bin on legs w/aeration
- 1350 Bushel Westeel flat bottom bin (no floor)
- 1200 Bushel Metal Ind hopper bottom bin on legs
- 1200 Bushel Friesen hopper bottom bin on legs w/aeration
- Denouden Turbo Fan aeration fan, 3hp
- (2) MS Helifol aeration fan, 3hp
- (2) Grain Guard aeration fan, 3hp
- Field King aeration fan, 3hp

TANKS & PUMP:

- 1000-gal fuel tank on stand
- 130-gal skid tank w/hand pump
- 50-gal skid tank w/hand pump
- 4" Berkley PTO irrigation pump
- (15)30' 4" aluminum irrigation pipe
- Water Master 6" floating slough pump
- rolls of 6" lay flat water hose

SHOP EQUIPMENT & MISC:

- Small amount of Farm related parts & hand tools

See www.fraserauction.com for complete listing

FRASER AUCTION SERVICE LTD.

Brandon, MB Auctioneer: Scott Campbell / Jesse Campbell

P: 204-727-2001 F: 204-729-9912 TF: 1-800-483-5856 E: office@fraserauction.com www.fraserauction.com

Licensed and bonded. P.L. License #918093. Member of M.A.A., S.A.A., A.A.A., A.A.C.

NOTE: Cheques of \$50,000 or more must be accompanied by bank letter of good standing. For more information on this please call Fraser Auction 204-727-2001

Not responsible for errors in description. Subject to additions and or deletions. Property owners and Fraser Auction Service not responsible for any accidents. GST & PST where applicable. TERMS: Visa, MasterCard, Debit, Cash or cheque.



FDKL CHAROLAIS

KRIST JANSON FAMILY

FARM AUCTION

OCHRE RIVER, MB. THURSDAY, JUNE 4th | 10:30am

For more information, contact Kris Kristjanson 204-648-5038 Email: kkristjanson75@gmail.com

DIRECTIONS: (NE 13-23-17W) 50.9919, -99.7195

From: Makinak, MB. (Jct #480 & #582 Hwys), 1.6kms north on #480 hwy to Road 135N, 3.8kms west on Road 135N to sale on south side

From: (Jct #5 & #480 Hwys) west of Ste Rose, MB., 6.5kms south on #480 Hwy to Road 135N, 3.8kms west on Road 135N to sale on south side

Watch for signs Sale Day.

ORDER OF SALE: 10:30am (misc, tools, shop items small livestock items, tanks ect.) 1:00pm (major equipment)

NO LIVE INTERNET BIDDING WILL BE AVAILABLE AT THIS SALE www.fraserauction.com



TRACTORS:

- 2013 JD 6150R MFWA 150hp tractor w/JD H360 self-leveling loader, bucket, grapple, 3PT, dual PTO, 3 remote hyd, 5 Range Power Quad, High speed 40K gear box, front fender kit, new 520/85R42 single rear rubber, new 480/70R30 singles front rubber, 9083hrs showing, s/n007608 (1 owner)
- 1989 JD 4455 MFWA 155hp tractor w/JD 280 self-leveling loader, bucket, grapple, 3 remote hyd, dual PTO, 15 speed power shift trans, new interior cab kit, front fender kit, 520/85R38 single rear rubber, 16.9R26 single front rubber, 3942hrs showing, s/n004477, (engine, transmission, and PTO overhauled)
- 1979 JD 4440 2WD 144hp tractor w/2 remote hyd, Quad range trans, Aux front fuel tank, dual PTO, 18.4-38 duals, 5468hrs showing, s/n024978 (2nd owner)
- 1982 JD 8640 4WD 290hp tractor w/3 remote hyd, return line, 1000 PTO, 20.8R38 duals, Quad range trans, upgraded 50 series JD engine, 3500hrs on upgrade, 10,846hrs showing, s/n008297RW

HARVEST EQUIPMENT:

- 1982 JD 7720 Turbo Combine w/JD pick-up header, JD sieves, chopper, 24.5-32 front rubber, 13.6-24 rear rubber, 4493hrs showing, s/n508052
- 1982 24' Versatile 4400 SP Swather w/rubber slates canvas, mounted in throat roller, 300 Ford Industrial gas engine, s/n194191
- 8' Douglas Poly swath roller
- Inland galvanized gravity box grain hopper on 4-wheel wagon

HAYING EQUIPMENT:

- BaleKing 481 12-wheel V-Rake, s/nVR2843 (1 owner)
- 2010 13.5' CaseIH DC132 Discbine w/1000 PTO, steel on steel crimps, s/nY9N082657 (1owner)
- 2015 JD 569 Mega Wide Plus Silage Special Rd Baler w/net wrap, 1000 PTO, Approx 14,000 bales, s/n426681, always shedded (1 owner)
- Tube-Line TLR5000 AX2 Bale Wrapper w/Honda engine, fully automatic, remote controls, Approx 10,000 bales, sensor shut down, s/n TLR15R16 (1 owner)
- Highline 1400 Bale Master DBL arm round bale picker w/chain unload, 14 bale cap.
- rolls – Sun Film silage wrap
- shop-built bus frame bale trailer (17 bale cap.)
- shop-built bus frame bale trailer (14 bale cap.)

LIVESTOCK EQUIPMENT:

- NDE 804 Vertical Mixer Feed Wagon w/scale, 1000 PTO, Tandem Axles, 15.0/55-17 rubber, spare tire, Model 14SC804, RH side discharge, s/n3275
- Vermeer PBX9000 Bale Processor w/RH discharge, self-loading, 1000 PTO, 16.5L-16 rubber, updated shield latches, VIN#1VRA201R6G1006353
- Renn Roller Mill (40-volt)
- Lakeland Arrow Q-Catch Portable Cattle handling system w/auto catch head gate, brisket bar, alley ways, crowding tub
- Real Industries maternity pen (tub style)
- (2) Approx 350-400-gal poly stock water troughs w/float system
- Behlen county poly stock trough
- Westeel metal stock trough
- Selection of treated fence posts 3"-4"x7"
- VERY LARGE selection of VET supplies: stock doctor, calf pullers, chains, dehorners, etc
- poly calf sled w/metal hitch
- Poly mineral feeders
- electric fencing supplies, solar systems, 110 & 12-volt fencers, wire, insulators
- 30' freestanding panels (5-bar and windbreak)
- assortment of panels and gates
- approx 50 inverted tire feeders
- HD 30' metal silage feeders
- metal feed troughs

TRUCKS:

- 1999 Western Star T/A Day Cab Hwy Tractor w/24.5 rubber, 500 Detroit engine, 20,000Kms on rebuilt engine, 18 spd trans, 4-way lockers, 50,000lbs rears, air ride, automatic greaser system, wet kit, 21,706hrs showing, 859,058kms showing, VIN#2WKPDDXJ3XK956284, SAFETIED
- 1967 Ford F600 S/A grain truck w/14' grain box, roll tarp, 361 Industrial gas engine, 5+2 trans, 920/20 rubber, 51,827 showing, VIN#F61ECX20743

TRAILERS:

- 1995 53' Tri-Axle High Boy flat deck trailer w/bale extensions, strap winches, 24.5 rubber, VIN#2M5131614S1035454, SAFETIED
- 2007 28' Norbert's tandem dualled 5th wheel flat deck trailer w/Beavertails, fold down ramps, 2-10,000lb axles
- 2013 20' Norbert's T/A stock trailer w/3 compartments (calf gate at front), rubber floor, 16" rubber, VIN# 2N9C7S4DG017001
- 2000 16' Blue Hills T/A stock trailer w/single partition

gate, rubber floor, 16" rubber

- 20' Arnes T/A end dump gravel trailer, SAFETIED
- 1994 Custom Built S/A Converter dolly, VIN# 2ATG04187RU600328

SEED & TILLAGE:

- 38.5' Bourgault 5700 Air Seeder w/Bourgault 3195 Air Cart, 7.5" spacing, 2" steel packers, single chute, hyd fan, metering tubes have been replaced, Drill s/n1054, Cart s/n5868
- 35' Morris Magnum II CP731 Chisel plow w/NH3 kit, 3-bar Morris harrows, self-leveling hitch, (NH3 kit only 2 years old from Prairie NH3)
- 60' Blanchard harrow packer bar w/P20 coils
- 60' Rite Way hyd harrows
- 19' JD 100 Deep Tillage
- 16' IH cultivator w/2 bar mounted harrows
- Mel-Cam 14 section diamond harrow bar
- Degelman rotary stone picker w/PTO drive, rock apron

GRAIN HANDLING EQUIPMENT:

- 10"x61' Westfield PTO swing hopper auger TR100x 61 w/hyd drive hopper auger
- 8'x36' Westfield Auger w/20HP Honda engine, s/n115650
- Pencil augers
- poly auger hoppers

3PT EQUIPMENT & ATTACHMENTS:

- HLA bale spear w/ALO mount
- HLA bale spear w/JD Quick attach mount 280 series
- 8' HLA bucket w/ALO mount
- Bush Hog 3PT post hole auger w/12" bit
- Yard drag system w/6 rail irons

TANKS & PUMP:

- 1000-gal Huge-L fuel tank w/115-volt Fill Rite pump
- (2) 300-gal fuel tanks on metal stands
- (3) skid tanks w/Fill-Rite 12-volt pumps, auto nozzles
- 1200-gal pol water tank w/3" valve

MISC:

- selection of misc items
- selection of implement tires
- rail road ties
- Plus, much more.

See www.fraserauction.com for complete listing

FRASER AUCTION SERVICE LTD.

Brandon, MB Auctioneer: Scott Campbell / Jesse Campbell

P: 204-727-2001 F: 204-729-9912 TF: 1-800-483-5856 E: office@fraserauction.com www.fraserauction.com

Licensed and bonded. P.L. License #918093. Member of M.A.A., S.A.A., A.A.A., A.A.C.

NOTE: Cheques of \$50,000 or more must be accompanied by bank letter of good standing. For more information on this please call Fraser Auction 204-727-2001

Not responsible for errors in description. Subject to additions and or deletions. Property owners and Fraser Auction Service not responsible for any accidents. GST & PST where applicable. TERMS: Visa, MasterCard, Debit, Cash or cheque.



MANITOBA'S 1ST HARDWOOD SAW LOGS AUCTION

LOG HARVESTER (SELLER) RICHARD MAGUET

STE ROSE DU LAC, MB. | FRIDAY, JUNE 5th | 1:00pm

FOR MORE INFORMATION ABOUT LOGS CONTACT RICHARD MAGUET
(CELL) 204-447-0310 OR (HOME) 204-447-2054 EMAIL: RMAGUET@HOTMAIL.COM

NO LIVE INTERNET BIDDING WILL BE OFFERED AT THIS SALE DUE TO POOR CONNECTION. PLEASE CONTACT OUR OFFICE PRIOR TO SALE DAY TO ARRANGE PROXY BIDDING THROUGH OUR ORDER BUYERS IF YOU ARE UNABLE TO ATTEND 204-727-2001.



Ash 3



Ash full length



Cottonwood



Cottonwood 3



Maple Box Elder



Maple



Oak 1



Oak 4



Oak 21' length



Oak full length



DIRECTIONS:

3 Miles South of Ste Rose Auction Mart on Hwy. # 5 or only 55 miles North of Neepawa, MB. Sale site right along #5 highway. **Watch for signs sale day.**

Approx 10,700 Board Feet consisting of: 84 Solid Oak Saw logs = Approx 5,300 Bdft. 58 Ash Saw logs = Approx 2,100 Bdft. 28 Cottonwood Saw logs = Approx 3,085 Bdft. 5 Manitoba Maple Saw logs = Approx 260 Bdft.

Log owner hired a professional Handcraft Log Homes Drafter/Builder/Contractor to maximize log quality. All logs were scaled inside bark, (average diameter), small end, using International Log Scale.

For more information please visit www.fraserauction.com

FRASER AUCTION SERVICE LTD.

Brandon, MB Auctioneer: Scott Campbell / Jesse Campbell

P: 204-727-2001 F: 204-729-9912 TF: 1-800-483-5856 www.fraserauction.com E: office@fraserauction.com

Licensed and bonded. P.L. License #918093. Member of M.A.A., S.A.A., A.A.A., A.A.C.

NOTE: Cheques of \$50,000 or more must be accompanied by bank letter of good standing. For more information on this please call Fraser Auction 204-727-2001. Not responsible for errors in description. Subject to additions and or deletions. Property owners and Fraser Auction Service not responsible for any accidents. GST & PST where applicable. TERMS: Visa, MasterCard, Debit, Cash or cheque.

Flexibility makes it easier

Protect Your Farm with
Guild Insurance, HMS Insurance
and Red River Mutual



Insuring your farm with FarmFlex allows you to customize your coverage to your specific operation. In addition to farming operations, this commercial farm product also allows for the writing of ancillary commercial operations, meaning that you can cover everything – your farm, your home and personal liability, and your side business – all with one policy. Like we said, flexibility makes it easier.

Call **1-866-277-4949** or visit guildhmsinsurance.ca/farm

Guild
INSURANCE BROKERS



PROUD PARTNER OF

Red River Mutual



BRANDON | WAWANESA | CARBERRY | SHILO | VIRDEN



CONSIGN NOW!

ANNUAL PRE-HAYING SALE AT FRASER AUCTION YARD

BRANDON, MB. | SATURDAY, JUNE 13th | 9:00am



These consignment sales are always very well attended auctions at our yard. We normally see a **HUGE** selection of lawn and garden, ATVs, trucks, trailers, industrial and farm equipment. For those of you that are regulars to our yard sales you know that it is a place second to none to market your equipment, and or look for that particular piece to add to your own equipment line up. Whether you are a buyer or a seller at Fraser Auction we take your business very seriously. We pride ourselves in giving you the best auction experience possible. We hope to see you at our sales and thank you for considering Fraser Auction Service Ltd. as your auctioneers.

Weekly updates available at www.fraserauction.com

FRASER AUCTION SERVICE LTD.

Brandon, MB Auctioneer: Scott Campbell / Jesse Campbell

Phone: 204-727-2001 Toll Free: 1-800-483-5856 Email: office@fraserauction.com Like us [f](#) Fraser Auction Service Ltd. Follow us [t](#) @fraserauction

Licensed and bonded. P.L. License #918093. Member of M.A.A., S.A.A., A.A.A., A.A.C.

NOTE: Cheques of \$50,000 or more must be accompanied by bank letter of good standing. For more information on this please call Fraser Auction 204-727-2001. Not responsible for errors in description. Subject to additions and or deletions. Property owners and Fraser Auction Service not responsible for any accidents. GST & PST where applicable. TERMS: Visa, MasterCard, Debit, Cash or cheque.

Q COUNTRY
91.5FM

*Today's Best
Country*

Coffee Crew

WITH **TRENT B. & LEANNE D.**
LISTEN WEEKDAY MORNINGS

Locally owned and operated by



WESTMAN | COMMUNICATIONS GROUP

qcountryfm.ca



Protect, Choose, Control



**Estate planning strategies that can help you
design a plan that's right for your family.**

**Call us for an appointment to learn about
the 6 key steps to developing your estate plan.**

Kevin Martin & Tanice Taylor
Financial Security Advisors

4A 457 9th St, Brandon, MB

(204) 578-5500 | www.branstone.ca





DALEEN FARMS

DAVID & COLLEEN DESROCHERS

RETIREMENT FARM AUCTION

BALDUR, MB. | MONDAY, JUNE 15th | 9:00am

For more information, contact sellers David & Colleen 204-825-7400

DIRECTIONS: (SW 36-4-13W) 49.340292, -99.0999941

From: Baldur, MB., 10.8kms east on #23 hwy to #342 hwy (Mile 73W), 3.2kms south on #342 hwy to RD23N, 0.7kms east on RD23N to sale on north side. Lane #72081

From: Mariapolis, MB., 8.4kms west on #23 hwy to #342 hwy (Mile 73W), 3.2kms south on #342 hwy to RD23N, 0.7kms east on RD23N to sale on north side. Lane #72081

Watch for signs Sale Day.

ORDER OF SALE: 9:00am (parts, tools, shop items, misc farm related items) 1:00pm (Internet bidding starts) major equipment begins to sell

LIVE INTERNET BIDDING WILL BE AVAILABLE AT THIS SALE www.fraserauction.com



TRACTORS:

- 1993 CaseIH 9270 4WD 335hp tractor w/4 remote hyd, dual return lines, Good Year 20.8-42 duals -fronts (90%) rear (40%), Quad range std trans, Atom Jet kit, Trimble Ezee 250 Guidance, Ezee Steer wheel motor, 5636hrs showing, s/nJCB0030680
- 1993 CaseIH 9250 4WD 300hp tractor w/4 remote hyd, return line, nearly new Firestone 20.8-38 duals (95%), power shift trans, Trimble Ezee Guide 250 Guidance, Ezee Steer wheel motor, 6093hrs showing, s/nJCB0031383
- 1979 IH 1086 2WD 146hp tractor w/IH 2350 loader with quick attach bucket, factory 3PT, 4 remote hyd, dual PTO, 18.4-38 factory duals, 4 rib front tires, 4 spd Hi-Low trans, TA, 8875hrs showing, s/n37458 (500hrs or less since New TA & Clutch – work orders available)
- McCormick Farm-All Super W4 Standard tractor, running, restored, repainted & new decals, s/n2894

GUIDANCE SYSTEMS:

- Complete Trimble 750 System w/Ezee steer wheel motor
- Trimble 750 System w/Ezee steer wheel motor (Used but very little)
- Assorted Ezee steer motor mount brackets – for tractors etc, application list available

HARVEST EQUIPMENT:

- 2008 CaseIH 8010 AFS SP Combine w/CaseIH 2016 pick-up header, Swath Master pick-up, hopper ext, long auger, Calmar spout, 900/R32 front rubber, 600/65R28 rear rubber, Magna cut chopper, chaff spreader, AFS Pro 600 Monitor, 1241 Threshing hrs showing, 1698 Engine hrs showing, (CaseIH Inspections has full maintenance records for last 5 years), s/nHAJ202844
- 2007 30' CaseIH 2052 draper header w/pick-up reel, Fore/Aft, pea auger, self-transport, s/n0000014002
- 1986 30' CaseIH 1010 header w/UII pick-up reel, Fore/Aft, Elmers 2-wheel transport, s/n000677
- 1997 25' CaseIH 8825 SP Swather w/UII pick-up reel, rear weights, 1491hrs showing, s/nCFH0127038
- 10' buhler/Farm King metal swath roller, s/n23601229
- 8' Douglas poly swath roller – drum needs repair
- set of Keer Sheers
- Labtronics 919 Moisture Tester w/919 digital scale, red & white poly case
- Simpler Sampler
- New: Combine Parts – elevator chains, pick-up belts, etc

TRUCKS:

- 1996 Mack CH613 Hwy tractor w/day cab, E7-427 engine, 13 spd trans, 22.5 rubber, checker plate tool box, aluminum fender kit, 8225kms showing, OD changed at 609,293kms, VIN# 1M1AA18YXTW058927, SAFETIED
- 1984 Chev 70 Kodiak DSL T/A Grain truck w/20' Cascade B+H, 3208 Cat engine, 13 spd Fuller trans, roll tarp, 22.5 rubber, air brakes, 219,015 showing (less than 60,000 on rebuilt motor) VIN# 1GBS7D4Y2EV132302, SAFETIED
- 1984 GMC 7000 S/A Grain truck w/16' Cascade Super III box (newer than truck) w/roll tarp, 366 gas engine, 5+2 trans, 11R22.5 rubber (good), 325,862 showing
- 1976 GMC 6000 S/A truck w/14' Midland Box, pull over manual tarp, 350 gas engine, 5+2 trans, New PTO pump, good 10R22.5 rubber, 27,277 original miles showing, VIN#TCE616V584618, SAFETIED

TRAILERS & WAGONS:

- 1995 40' Load King T/A DBL hopper steel grain trailer w/1-year old roll tarp, spring ride, 24.5 rubber, VIN#2LDDT4027SW025635, SAFETIED
- Bruns 400 Gravity tank on Horst 4-wheel wagon w/side extension, roll tarp, 315/80R22.5 rubber, s/n120578
- 4.5'x10' Aluma S/A Utility trailer w/fold down rear ramps
- 4-wheel farm wagon w/HD beam deck
- 4'x8' S/A farm wagon w/new tires

SEED & TILLAGE:

- 42' Bourgault 5700 air drill w/Bourgault 3225 dual compartment air tank, 7.5" spacing, 3.5" steel packers, 2" carbide tips, side band openers, dual chute-capability, newer tires, self-loading auger, single hyd fan, Cart s/n6204
- Flexi-coil 1720 tow between air cart w/self-loading auger, diamond tread rubber, single hyd fan, s/nP054943 (used in front of 5700 drill)
- 42' Bourgault 9200 tillage w/10" knock-on sweeps, 3 bar Bourgault harrows, clips only a year old, tank hitch, good rubber, s/n822125
- 33' CaseIH 5600 Chisel Plow w/Raven Super Accu-Flow NH3 kit, variable rate capability, Scott hyd tank winch, 3 bar Morris harrows, 12" spacing, self-leveling hitch, Atom Jet No-Freeze carbide tip knives
- (2) 1000-gal NH3 tanks (Twinned) on Shop-Built wagon w/18.4-26 tractor tires on back, 16.5L-16.1 Diamond tread on front, tanks Certified
- 35' Wilrich Field Cultivator w/2420 Valmar granular applicator, Wilrich 3 bar mounted harrows
- 20' Ezee-On tandem disk w/smooth blades front & back, scraper, s/n-n/a
- Flexi-coil 1615 Plus tow between air cart w/single fan, self-loading auger, s/nM043644
- Melroe 903 7 bottom plow w/spring resets
- Mel-can fork type stone picker
- 70' Herman Hyd harrows w/good tines
- 100' Flexi-Coil 65XLT High Wheel PT Sprayer w/1240-gal split tank, DBL hyd pumps, DBL booms, wind screens, auto fold, Diamond tread 18.4-26 rubber
- Chem Handler III chemical system w/2" plumbing (only used 1 season)
- 18' Load King seed & fertilizer tender w/hyd augers, mounted on S/A wagon (tractor pull)
- Valmar 240 granular applicator – for parts

GRAIN HANDLING:

- 10'x70' Farm King PTO Swing hopper auger w/dual augers in hopper, low profile hopper, hyd mover on hopper, hyd winch on hopper, reverser gear box, bin camera, never spill spout, s/n-n/a
- 10'x46' Meridian Auger w/Meridian 4-wheel mover, 35HP Kohler Command Pro electric start engine, hyd lift winch, electric clutch, light pkg, reversing gear box, s/n00914
- TFX80-31' Westfield auger w/self-mover kit, 20HP Kohler engine, electric clutch, reverser, s/n245254
- 15'x15'LP Brandt Grain belt transfer conveyor w/Honda GX270 engine, like new
- 10'x35' Convey-All Conveyor w/5HP 1PH electric motor, s/n1204023902

- 10'x65' Speed King Conveyor w/S/S Tube, hyd lift winch, PTO drive, s/n-n/a
- 8'x36' Westfield Auger, 5HP 1PH, electric motor, s/n-n/a
- Graham G3 seed treater w/electric motor driven, reverser
- Graham seed treater w/110L hopper bottom poly tank, steel cone, auger mount treating system
- Hopper bottom shop-built seed treater w/mixer auger, electric motor, never used
- (2) Grain Guard 100,000BTU Propane heaters
- Good Selection of poly auger hoppers

3PT & OTHER EQUIPMENT:

- 10' Allied 150/120 3PT HD Blade w/hyd angel, hyd tilt, hyd swivel, s/n253503312
- 48" pallet forks, fit IH 2350 loader

TANKS & PUMPS:

- 1750-lmp gal Free Form Black-Out poly water tank w/2" fitting on Home built wagon
- 1400- lmp gal Free Form Black-Out poly water tank w/2" fitting
- (2) 1000-gal fuel tank w/115-volt pump – repainted
- 500-gal poly water tank w/cradle
- 100-gal Skid tank w/12-volt Fill-Rite pump
- 45-gal Skid tank w/12-volt pump
- (2) Honda 2" water pumps – 1 NEW

TIRES:

- Assortment of truck tires
- Assortment Used tractor tires including (2) Good Year 20.8-42, (2) Good Year 20.8-38, (2) Good Year 18.4-38, Diamond Tread tires, Firestone 20.8R42 Radials, Firestone 18.4R26 on rims, (2) like new rice tires 18.4R26 (95%), plus more

SHOP EQUIPMENT:

- Very large selection of farm related tools: Snap -on tool: large socket sets, ridged pipe wrenches, hand tools, ext cords, wrenches, hammers, screwdrivers, post hole digger, floor jacks, Jack-All's, cables, hoses, shovels, scoops, bench grinders, tool boxes, drill press, battery tester/battery booster, and much more!!!
- Large tow straps, load binders, loading chains, etc
- 2-ton Powerfist fold-up engine crane
- Yule walk-behind battery operated electric pallet jack
- 50-ton shop press
- 20-ton shop press
- (4) loaded bolt bins
- Large selection of parts assortment trays
- Buddy Lube 4 compartment bulk oil distributing tank, (2)265L & (2) 133L tanks w/filter storage & drip tray
- New Engine & hyd oils
- Large Assortment of Farm related Chemicals (30-40 cases) Always in heated shed – Glyphosate, Herbicide, Fungicide, Maverick, Start Up, MCPA, Overall, 24D, etc.
- Cement mixer
- Easy Kleen Magnum 4000 Gold Pressure Washer
- Plus, more. Too much to list.

See www.fraserauction.com for complete listing

FRASER AUCTION SERVICE LTD.

Brandon, MB Auctioneer: Scott Campbell / Jesse Campbell

P: 204-727-2001 F: 204-729-9912 TF: 1-800-483-5856 E: office@fraserauction.com www.fraserauction.com

Licensed and bonded. P.L. License #918093. Member of M.A.A., S.A.A., A.A.A., A.A.C.

NOTE: Cheques of \$50,000 or more must be accompanied by bank letter of good standing. For more information on this please call Fraser Auction 204-727-2001

Not responsible for errors in description. Subject to additions and or deletions. Property owners and Fraser Auction Service not responsible for any accidents. GST & PST where applicable. TERMS: Visa, MasterCard, Debit, Cash or cheque.



RANDY GORDON & BARB MCCAIG RETIREMENT FARM AUCTION

BIRTLE, MB. | WEDNESDAY, JUNE 17th | 10:00am

For more information, contact

Randy Gordon (Text Cell) 204-821-3537 or 204-568-4518 Email: r_gord@icloud.com

DIRECTIONS: (SE 1-16-27W) 50.33008,-101.06197

From Birtle, MB. (Jct #42 & #83), 10kms south on #83 to Rd 90N, 1.7kms west on RD 90N, Sale site on north side.

Watch for signs Sale Day.

ORDER OF SALE: 10:00am (misc, tools, shop items, parts, tanks, pumps, ect) 1:00pm (travel trailer, bins, fans, major equipment)

NO LIVE INTERNET BIDDING WILL BE AVAILABLE AT THIS SALE www.fraserauction.com



TRACTORS:

- 1985 Versatile 836 4WD 210hp Tractor w/4 remote hyd w/return, L10 Cummins, 12 spd standard trans, 8495hrs showing, s/n251253
- Versatile 160 Bi-Directional 84hp Tractor w/bucket, 14.9-24 rubber, tractor runs & works but needs TLC
- 1978 Case 1070 2WD 112hp tractor w/2 remote hyd, 540 PTO, 8 spd standard trans, 20.8R38 single rubber, 10,326hrs showing, motor rebuilt @ 6,000hrs, s/n8830371
- 1976? Case 1175 2wd 135hp tractor w/2 remote hyd, 8 spd trans, 18.4-38 duals, 540 PTO, 9185hrs showing, s/n8811229
- Outback SKS Guidance System

WHEEL LOADER & CRAWLER:

- Case W14B Wheel Loader w/7' bucket, 15.5-25 rubber, 8974hrs showing
- Case 310 Crawler w/blade

HARVEST EQUIPMENT:

- 1989 JD 9500 SP Combine w/JD 914 pick-up, 30.5L-32 front rubber, 14.9-34 rear rubber, chaff spreader, chopper, 4548 Sep hrs showing, 6344 Eng hrs showing, s/n633014
- 1993 30' MacDon Str cut header w/transport, pick-up reel, in-throat auger, JD adapter-9600,9500,8820,7720 Combines, single knife drive, s/n84251
- 1990 25' JD 925 Str cut header w/batt-reel, 4-wheel transport, s/n635993
- Gleaner L3 SP Combine w/23.1-34 rubber, chopper (hasn't seen the field in 8 years)
- 26' Co-op 722 SP Swather w/pick-up reel, 18.4-16.1 rubber, in-throat auger, new starter, 2145hrs showing
- 1972 20' Versatile 400 SP swather w/pick-up reel
- Moulson's welding swather transport
- 8' Douglas steel swath roller

SEED & TILLAGE:

- 36' Bourgault 8800 Air Seeder w/8" spacing, ¾" carbide tip openers, packers & harrows
- Bourgault 2155 w/single chute, single fan, hyd load auger, dual compartments

- 38' Bourgault 34-38 Commander Air Seeder w/Prasco Super Seeder 75-55 Air Cart
- 100' Flexi-Coil System 60 pt sprayer w/800-gal tank, hyd pump
- 60' Brandt PT Sprayer w/400-gal tank, hyd pump
- 50' Riteway Harrows
- 37' IH 5500 Cultivator w/Degelman harrows, 12" spacing, new lift cylinders
- 28' CaselH 7200 Hoe Drills
- 24' IH 620 Press Drill
- 27' Morris 525 Cultivator w/3 bar harrows
- 21' Morris 419 Cultivator w/3 bar harrows
- Degelman Rotary Stone picker, ground drive

GRAIN HANDLING EQUIPMENT:

- 10"x61' Westfield 100-61 auger w/single auger in hopper, 540 PTO, needs TLC
- 8"x52' Sakundiak HD 8-1600 Auger w/hyd lift, 540 PTO, s/n49440

BINS & FAN:

- 3000 Bushel Westeel on Econo hopper w/triple skids frame, air
- (3) 2150 Bushel Westeel Roscoe on Westeel Hoppers w/double skids
- (2) 2150 Bushel Westeel Roscoe on Stor-King Hoppers
- Edwards Grain Guard 3HP Aeration Fan

TRUCKS:

- 1973 GMC 6000 S/A Grain truck w/14' B+H, roll tarp, 350 gas, 5 spd trans
- Chevy C65 Tag axle grain truck w/18' B+H, 366 gas, 5+2 trans, newer roll tarp, 10.00R20 rubber, 37,479showing
- GMC 7000 S/A Truck w/16' flat deck
- GMC 7000 S/A truck w/10' gravel B+H, 428 gas
- IH S-1700 S/A Grain Truck – PARTS – NOT RUNNING

TRAILERS & WAGONS:

- 16' Homemade T/A 5th wheel Cattle trailer w/mobile home axles
- 24' Homemade Bale trailer

TRAVEL TRAILER:

- 1987 24' Citation Motor home, Ford Econoline, 350 gas, motor & drive train good, NEEDS WORK •PARTS•

3PT EQUIPMENT & ATTACHMENTS:

- 9' Leon Blade
- Wood Splitter w/Honda motor

TANKS & PUMP:

- 1000-gal Fuel tank, DBL-wall, 110-volt pump
- 65-gal slip tank w/12-volt pump

LAWN & GARDEN, LEISURE:

- 2014 Can-Am Commander XT1000 w/2500 miles showing, 2 newer rear tires, 2" receiver hitch, dump box, ½ windshield, roof, back screen window
- 8' Equinox sleigh for snow-mobile
- JD LA145 lawn tractor w/48" cut, Hydrostatic drive, new tires, 341hrs showing
- 28" Snow Trac Snow Blower w/10HP motor

SHOP EQUIPMENT & MISC:

- Welder
- Air Compressor
- Chop Saw
- air tools
- Shop tools
- (30) 30' hydro poles
- Cult Shovels,
- shanks
- Lumber
- tires

See www.fraserauction.com for complete listing

FRASER AUCTION SERVICE LTD.

Brandon, MB Auctioneer: Scott Campbell / Jesse Campbell

P: 204-727-2001 F: 204-729-9912 TF: 1-800-483-5856 E: office@fraserauction.com www.fraserauction.com

Licensed and bonded. P.L. License #918093. Member of M.A.A., S.A.A., A.A.A., A.A.C.

NOTE: Cheques of \$50,000 or more must be accompanied by bank letter of good standing. For more information on this please call Fraser Auction 204-727-2001

Not responsible for errors in description. Subject to additions and or deletions. Property owners and Fraser Auction Service not responsible for any accidents. GST & PST where applicable. TERMS: Visa, MasterCard, Debit, Cash or cheque.



DENBAR FARMS LTD

DENNIS & BARB SCHULTZ

RETIREMENT FARM AUCTION

EMERSON, MB. | THURSDAY, JUNE 18th | 11:30am

For more information, contact seller Dennis & Barb Schultz (Cell) 204-324-3201 or 204-373-2034

DIRECTIONS: (NW 15-1-3E) 49.044801, -97.116775

From Emerson, MB. (Jct #75 & #200 hwy), 11kms NE on #200 Hwy to Rd 3N, 2kms east on Rd 3N to sale on south side, Lane #15040-3N

From Dominion City, MB. (Jct #201 & #200), 9.7kms south on #200 hwy to Rd 3N, 2kms east on Rd 3N to sale on south side, Lane #15040-3N

Watch for signs Sale Day.

ORDER OF SALE: 11:30 (farm related misc small items, parts, tools, tanks, pumps, ect.) 1:00 (Internet bidding starts) bins, fans, followed by major equipment



LIVE INTERNET BIDDING WILL BE AVAILABLE AT THIS SALE www.fraserauction.com



TRACTORS:

- 2006 NH TJ 480 4WD 480HP Tractor w/710/70R42 Michelin duals (90%), 4 remote hyd w/return, 1000 pto, rear weight pkg, HID lights, power shift trans, 55-gal hyd pump, 4238hrs showing, wiring harness for JD Starfire Guidance System, always shedded, s/nZ6F200017
- 2002 JD 7810 MFWA 175HP Tractor w/3pt, 3 remote hyd, dual pto, (14) front suitcase weights, 18.4R46 rear duals Firestone (60%), 420/90R30 front single Firestone (40%), power quad trans w/high speed gear box, wired for JD Star Fire system, 5187hrs showing, s/n077884
- 1981 MF 2705 2WD 133HP Tractor w/factory 3pt, 3 remote hyd, dual pto, front suitcase weights, 18.4-38 duals (like new 90%), 24 spd power shift trans, 5418hrs showing, s/nR012554
- IH 574 DSL 2WD 67HP Tractor w/IH 1850 loader, bucket, dual pto, 3pt, single hyd, 16.9-30 rear singles, 2973hrs showing (clock not working), rebuilt engine, s/n-NA

GPS AUTO STEER UNITS & LASER LEVEL:

- Trimble Spectra Precision Laser w/LR30 receiver, dual slope
- (4) JD Auto Track Universal Steering wheels (1 is ATU 200 others are ATU 100)
- (1) Star Fire ITC Dome
- (2) Star Fire 3000 Domes
- (3) JD Brown Box Monitors w/SF1 Autotrac keycards

HARVEST EQUIPMENT:

- 2005 JD 9760 STS SP Combine w/2010 JD 615P pick-up head, hopper topper, long auger, 800/70R38 Firestone single fronts, 600/65R28 Titan rear, fine cut chopper, GreenStar ready, 1785 Sep hrs showing, 2409 Eng hrs showing, s/n712598 (JD Tech has gone over unit every Fall)
- 2006 MacDon 9352i Turbo SP Swather w/25' MacDon 972 Harvest head, DBL swath, pick-up reel, 540/65R42 Good Year rubber, wire harness for JD Starfire Guidance, 971 cutting hrs showing, 1161 eng hrs showing, s/n168935, always shedded, very clean unit
- 2010 30' JD 630F Hydra Flex Str Cut Header w/poly DBL dividers, pick-up reel, 2-wheel transport, auto header-height sensing in rigid mode, s/nFVA0736962
- Brent 772 700 Bushel Grain Cart w/1000 PTO, 14" unload auger, roll tarp, hopper ext, light kit, s/n772040
- Sunflower pans, end dividers & finger drum for 30' header
- 8' Farm King metal swath roller

- 1 set Concaves – round Bar w/Interrupters
- Labtronics 919LT Moisture Tester w/scale

TRUCKS & TRAILER:

- 1998 Kenworth T800 Hwy tractor w/day cab, Cummins M11 350HP engine, 13 Spd Eaton Fuller Trans, 433 gears, air ride, GVW 39,500kg registered, 22.5 rubber, 729,553kms showing, VIN# 1XKDD99X1WR952458, SAFETIED
- 1980 IH 1824 Tag Axle Truck w/19'x8.5' box, Midland roll tarp, IH 404 engine, 10.00-20 rubber, 5+2 trans, 123,349kms showing, VIN#AA182KCA18131 (1 Owner truck)
- 2003 40' Castleton tandem steel grain trailer w/dbl hoppers, roll tarp, 24.5 rubber, air ride, VIN#2C9B3S4C73S133366, SAFETIED
- Set of Michael Aluminum hopper augers

SEED & TILLAGE:

- 52' Flexi-Coil 5000 Air drill w/Flexi-Coil 3850 triple compartment air cart, 7.2" spacing, 3" rubber over steel packers, Flexi-coil Stealth carbide tips openers, DBL chute, dual fans, variable drive rollers, 10" self-loading auger, mounted harrows in front of packers, Flex-Control II Version 5.4 controls w/SDR Prime switch Version 1.0, blockage monitors, Drill s/n110445, Cart s/n124010
- 90' Summer Ultimate High Clearance PT Sprayer w/800-gal poly tank & 200-gal poly tank, chemical inductors, hyd pump, Raven SCS 450 NVM controls for 800-gal tank & Summers MG controls for 200-gal tank, 2 chemical DBL boom system, 3 section boom controls, 480/80R38 singles, s/nC0497
- 35' Flexi-coil 820 tillage w/Bourgault knock-on adapters, 4 bar mounted harrows, Dickie John NH3 Kit, Monitor-Dickie John DJCMS 100 monitor (2 box system) s/nS070647
- 70' Summers Heavy Harrows s/nH0984
- 80' Powermatic 110 Hyd Diamond Harrows
- 40' Wilrich cultivator w/3 bar harrows
- 18" Haul-Air Seed & Fertilizer tender w/hyd drill fill
- (56) 3" Stealth carbide tip openers

GRAIN HANDLING:

- REM VRX Grain Vac w/1000 PTO, metal & rubber hose kit, nozzles, 75hrs showing, s/n32309 (Approx 3 years old)
- 1986 Conveyair 2450 Grain Vac w/1000 PTO, rubber & metal hose kit, s/n2450532
- 10"x70' buhler/Farm King PTO Swing hopper auger w/single auger in hopper, electric mover on hopper, remote control hopper swing, electric winch, s/nNA

- 10"x51' Westfield PTO Swing hopper auger w/single auger in hopper, hyd drive, s/n1693
- 8"x41' Westfield STX Auger w/self-mover kit, 20.5hp Kohler Command Pro eng, hyd lift winch, electric clutch, like new, always shedded, s/n274864
- 8"x41' Westfield Auger w/Honda 20HP electric engine, s/nNA
- 7"x36' Westfield auger w/B&S 16HP engine
- 7"x36' Westfield Auger, motor-not running
- 6"x8' Shop Built transfer auger w/Honda motor
- Poly auger hoppers
- (2) Bin sweep drag augers

BINS & AERATION FANS:

- (2) Approx 4000 Bushel Vidir hopper bins on legs, epoxy coated, 18" Aeration tube, 2 site glasses, (2007)
- Approx 1700 Bushel Friesen hopper bottom fertilizer bin on legs w/Aeration tube
- Approx 1700 Bushel Friesen hopper bottom fertilizer bin on legs, epoxy coated w/Candy cane for dry fertilizer
- Approx 1200 Bushel Friesen hopper bottom fertilizer bin on legs
- Edwards Grain Guard Propane Supplemental Heater
- Shel-Tek 3.5HP 1PH, Aeration Fan, dual motor
- Edwards Grain Guard 3HP 1PH, Aeration fan, s/n200820318
- Flaman 3HP 1PH, Aeration Fan
- Moore 3HP 1PH, Aeration Fan
- (2) Caldwell 1.5HP 1PH, Aeration Fans

3PT EQUIPMENT & OTHER:

- 5' Woods M5 3PT Rotary Mower
- 12' Grader, hyd, pull type conversion

TANKS & PUMPS:

- 1000-gal Westeel propane tank, Certified 2019, Built 1979, s/nN6872
- 1000-gal Westeel fuel tank w/Gas Boy pump & meter
- 500-gal John Wood fuel tank w/Fill-Rite 115-voltHigh-Flow pump
- 2" water pump w/B&S motor

SHOP EQUIPMENT:

- Small assortment of misc farm items
- selection of implement tires on rims
- (6) VHF FM Radios – Kenwood, Motorola
- Plus, other farm related tools and parts

See www.fraserauction.com for complete listing

FRASER AUCTION SERVICE LTD.

Brandon, MB Auctioneer: Scott Campbell / Jesse Campbell

P: 204-727-2001 F: 204-729-9912 TF: 1-800-483-5856 E: office@fraserauction.com www.fraserauction.com

Licensed and bonded. P.L. License #918093. Member of M.A.A., S.A.A., A.A.A., A.A.C.

NOTE: Cheques of \$50,000 or more must be accompanied by bank letter of good standing. For more information on this please call Fraser Auction 204-727-2001

Not responsible for errors in description. Subject to additions and or deletions. Property owners and Fraser Auction Service not responsible for any accidents. GST & PST where applicable. TERMS: Visa, MasterCard, Debit, Cash or cheque.



B&P FARMS LTD.

BARRY & PATTI JANSSENS

RETIREMENT FARM AUCTION

DELORAINE, MB. | FRIDAY, JUNE 19th | 11:00am

For more information, contact seller Barry Janssens 204-534-7501 Email: barryjanssens13@gmail.com

DIRECTIONS: (NE 13-3-23W) 49.218106,-100.451609

From: Deloraine, MB. (#3 Hwy & Rd 134W east side of cemetery), 4.9kms north on Rd 134W to Rd 15N, 2.6kms east on Rd 15N to sale site on south side

From: North Jct of #3 & #21 Hwys), 1.6kms east on Rd 17N (Kirkwood Rd) to Rd 134W, 3.2kms south on Rd 134W to Rd 15N, 2.6kms east on Rd 15N to sale site on south side

ORDER OF SALE: 11:00 AM (parts, tools, misc farm related items) 1:00 PM (Internet bidding starts) major equipment begins to sell



LIVE INTERNET BIDDING WILL BE AVAILABLE AT THIS SALE www.fraserauction.com



TRACTORS:

- 2002 CaseIH STX275 4wd 275hp Tractor w/4 remote hyd, 2 returns, Quad Range standard trans, 20.8R38 duals, 1619hrs showing, s/n0100313
- 1988 CaseIH 7120 Magnum 2wd 166hp tractor w/3 remote hyd, 2 return lines, dual pto, 18 spd Power Shift, 20.8R38 duals on rear (inside tires are new), 4 Rib Titan 14L-16.1SL flotation rubber on front, 5358hrs showing, s/n0006352
- 1984 Case 2294 2wd 154hp tractor w/2 remote, return, dual pto, Power Shift trans, 18.4-38 singles, 11.00-16.4 Rib front rubber, 8543hrs showing, bottom end done at 5000 hrs, s/n9929710
- MF Super 90 2wd tractor w/Allied 594 loader, 2 remote hyd, 540 PTO, 8626hrs showing, s/n886709

GUIDANCE SYSTEMS:

- Trimble Ezee Steer 500 w/Ezee Steer wheel motor
- Trimble Ezee Steer 250w/Ezee Steer wheel motor

HARVEST EQUIPMENT:

- 2010 CaseIH 6088 AFS combine w/CaseIH 2016 pick-up header, Swath Master pick-up, Pro 600 monitor, dual kit, long auger, standard chopper, chaff spreader, 903 eng hrs showing, 696 rotor hrs showing, s/nY9G002656 (CaseIH inspection prior to sale)
- 2008 30' CaseIH 2142 Draper header w/pick-up reel, self-transport, single knife drive, light kit, s/nY8ZN00515
- 2002 MacDon 9350 sp swather w/30' MacDon 962 Harvest header, pick-up reel, new knife & canvases, 1376 eng hrs showing, 1104 cutting hrs showing, s/n149733
- Unverferth GC650-bushel grain cart w/extension to 800 bushels, roll taro, PTO unload, 14" unload auger, Firestone 24.5R32 rubber, s/n650073
- Approx 400 Bushel Zettler Gravity Wagon w/ extensions on HD Martin 4-wheel farm wagon, roll tarp, 12R22.5 rubber
- Swather transport, tandem axle
- 8' Farm King swath roller
- (29) crop lifters
- Labtronics 919 moisture tester w/919 electronic scale
- hand held temperature gauge
- 919 Smart Charts

SPRAYER:

- 2012 4660 Spray-Coupe high clearance sprayer w/80' booms, 400-gal poly tank, 2" plumbing, 380/85R24 narrow and 540/65R24 flotation rubber, Raven Controls SCS, Raven Integrated auto steer, 5 section boom controls, auto rate, 1556hrs showing, s/nACN8A2223

TRUCKS:

- 1998 Ford Louisville s/a grain truck w/16' Cancade box, roll tarp, rear hoist controls, 3126 CAT engine, 6 speed trans, 22.5 rear rubber, 385/65R22.5 flotation on front, 10,000lb fronts, 21,000lb rear, 292,347kms showing, VIN# 1FDXN80F8WVA11211, SAFETIED
- 1994 Ford LTL 9000 Aeromax t/a grain truck w/21' Cancade box, roll tarp, rear hoist controls, 22.5 rubber, 13 speed Road Ranger trans, Cummins M11 engine, 12,000lb front, 36,000lb rear, 198,928Kms showing, VIN# 1FTYA95VXRVA48257, SAFETIED
- 1975 Dodge D800 s/a grain truck w/16' B&H, V8 gas engine, 5+2 trans, 8.25-20 front rubber, 10.00-20 rear rubber, 73,684 miles showing, VIN#D81FM4J021562

SEED & TILLAGE:

- 2012 72' Gates Magnum heavy harrows w/5-bar harrows, s/n1298272
- 2010 18' 1225 Ezze-On off-set disc w/notched blades front & back, scraper kit, s/n53266
- 33' Ezze-On 7550-Series II air seeder w/Ezze-On 3215 air cart, 2 compartment tank -120 rear tank & 95 front tank, carbide tip openers, 10" spacing, single chute, 2 bar harrows, 3" rubber over steel packers, light kit, self-loading auger, Drill s/n52410 & Tank s/n50612
- 33' CaseIH 5800 tillage w/3-bar harrows, NH3 kit, Knock-on spikes, s/nJAG0622358
- 2012 14' Peloquin PT Grader w/hyd tilt, hyd angel, steering rear axles
- Degelman rotary stone picker, ground drive with clutch
- Crown 600 approx 3-yard scraper, s/n0571

GRAIN HANDLING:

- 2017 Rem VRX grain vac w/1000 PTO, steel hose kit, 16hrs showing, s/nVRX40333
- 2012 Farm-King 10"x70' pto swing hopper auger w/DBL augers in hopper, reversible gear box, s/nNA
- Brandt 8"x45' auger w/self-mover kit, hyd winch, 20hp Honda engine, s/n88286
- Sakundiak 8"x39' auger w/Hawes Agro mover kit, 27hp Kohler Command Pro electric start engine, hyd lift winch, s/n66857
- (2) Wheatheart bin sweeps

OTHER EQUIPMENT:

- 16' Woods BW180X Bat-Wing rotary mower w/1000 PTO, chain guards front & back, s/n1349767

TANKS & PUMPS:

- 1000-gal Westeel fuel tank w/115-volt pump & nozzle
- 1250-gal poly water tank
- 850-gal poly water tank
- 150-gal skid tank w/12-volt pump
- 400-gal poly water tank on HD 4WH farm wagon, 2" plumbing
- 300-gal steel tank on 4WH farm wagon
- NEW Fill-Rite 12-volt, 15GPM fuel pump
- NEW 2" 6.5HP Powerfist water pump
- 2" Honda water pump
- 2" Ducar water pump
- Plus, other misc farm related tools & items

See www.fraserauction.com for complete listing

FRASER AUCTION SERVICE LTD.

Brandon, MB Auctioneer: Scott Campbell / Jesse Campbell

P: 204-727-2001 F: 204-729-9912 TF: 1-800-483-5856 E: office@fraserauction.com www.fraserauction.com

Licensed and bonded. P.L. License #918093. Member of M.A.A., S.A.A., A.A.A., A.A.C.

NOTE: Cheques of \$50,000 or more must be accompanied by bank letter of good standing. For more information on this please call Fraser Auction 204-727-2001

Not responsible for errors in description. Subject to additions and or deletions. Property owners and Fraser Auction Service not responsible for any accidents. GST & PST where applicable. TERMS: Visa, MasterCard, Debit, Cash or cheque.



ESTATE OF RENE VANDOORNE

COLLECTOR TRACTORS STATIONARY ENGINES

COLLECTABLES AUCTION

BRANDON, MB. | SATURDAY, AUGUST 15th

At the time of Mr. VanDoorne's passing all his tractors were stored in sheds that we can not access until spring. The information you will find below was obtained from hand written notes that Rene wrote himself dated January 2001. Once we can access the sheds we will update the list with more details. Rene was an avid collector and attended many of our auctions over the years and it is yet to be determined what other items he may have stored in his personal time capsule. Please plan to spend the day with us and pay respect to his collection. Rene was a good personal friend and we are proud to be handling his sale.

DIRECTIONS:

Sale will be held at Fraser Auction Service sales yard 1/4 mile north of the junction of highways #1 & #10 at 25 Wheatbelt Road. Brandon, MB. (Only 1/4 mile from airport) Watch for signs Sale Day.

Auctioneers Note: This sale will be held in conjunction with our Annual Pre-Harvest Consignment sale. Rene's collection will be all lined up in one area of our yard and sold in its entirety at a set time TBA.



LIVE INTERNET BIDDING WILL BE AVAILABLE AT THIS SALE www.fraserauction.com

JOHN DEERE TRACTORS:

- 1938 BR s/n328843 (Restored)
- 1944 A s/n539385 (Restored)
- 1949 AR Unstyled s/n271086 (Restored)
- AR Unstyled (has wheel brakes)
- B (Restored)
- 1936 A s/n428092 (Struck)
- AR Styled (Stuck)

FARMALL / McCORMICK / IHC TRACTORS:

- 1933 Farmall F12 w/wide front s/n1550 (Restored)
- 1935 McCormick-Deering W40 on steel s/nWKC6794 (Restored)
- 1945 McCormick W4 s/n12961 (Restored)
- 1946 Farmall H s/n238470 (Restored)
- 1946 Farmall FM w/FEL s/n111432 (Restored)
- 1948 Farmall FM w/FEL s/n163169 (Restored)
- 1954 Farmall FM TA w/Farmhand High lift FEL, wide front, Power Steering (Restored)
- Farmall Super FM Diesel w/wide front (Restored)
- McCormick W9 (Restored)

- McCormick Super W6TA (Restored)
- McCormick W9 (Running not Restored)
- McCormick W30 (Restored)
- (2) McCormick-Deering 15-30's
- Farmall FM road grader

MINNEAPOLIS-MOLINE TRACTORS:

- 1937 Twin City FTA s/n156041 (Restored)
- 1950 M-M-U s/n194907016 (Restored)
- 1951 M-M-U s/n1911969 (Restored)
- 1953 M-M-Z s/n01809323 (Restored)
- 1953 M-M-R s/n01705208 (Restored)

OLIVER / COCKSHUTT TRACTORS:

- Oliver HG Cletrac crawler s/n2438933 (Restored)
- Oliver 70 (Restored)
- Oliver 80 (Restored)
- Cockshutt 30 E3 Co-op (Restored)
- Cockshutt 40 Diesel w/Western fenders, cast wheels (Restored)
- Cockshutt 70 w/curtains (Restored)
- Cockshutt 550 (Restored)

LONG TRACTOR:

- Long tractor (Restored) More info to come

ALLIS-CHALMERS TRACTORS:

- CA (Restored)
- Huber Grader (Restored)

JI CASE TRACTORS:

- 1930 L s/n325383 (Restored)
- 1943 DC4 s/n4710147 (Restored)
- 1946 VA s/n5063393 (Restored)
- 1949 LA s/n5323175 (Restored)
- D (Restored)
- S (Restored)
- 500 Diesel w/new gauges, new decals, partially restored
- 700 (Restored)
- 930

MASSEY-HARRIS TRACTORS:

- MH 30 (Restored)
- 1948 MH 44 s/n6-25-48 (Restored)
- MH 44 w/FEL (Restored)
- MH 444 (Restored)
- 1950 MH 55 s/n9-11-50 (Restored)
- MH 88 w/FEL (Restored)
- MH 101 (parts)

ENGINES:

- LeRoy 2-cyl liquid cooled (cranks to the left)
- LeRoy 2-cyl liquid cooled (cranks to the right), needs Mag
- IHC 4-cyl swather engine (Restored)
- Case 4-cyl liquid cooled combine engine (Restored)
- Chrysler 6-cyl liquid cooled combine engine (Restored)
- MM 4-cyl combine engine
- Ford 300 Flathead 6-cyl engine
- Deutz Diesel single cyl engine
- Fairbanks flywheel engine
- IHC 1 1/2 - 2 1/2hp engine w/spoked flywheel (Restored)
- IHC 2 1/2 - 5hp engine w/spoked flywheel (Restored)
- IHC 5hp single flywheel engine (Restored)
- IHC 1 1/2 - 2 1/2hp single flywheel engine (Restored)
- Fairbanks Morse 1 1/2hp (Not Restored)
- Massey Harris 1 1/2hp (Restored)
- De-Laval 1 1/2 - 2hp w/spoked flywheel
- Fairmont Jigger engine



SCOTT CAMPBELL



I am very active in the farming and rural communities.

With my connection to the Ag sector and rural areas and my everyday communications with producers on several fronts of Ag marketing, “Who can you think of better to sell your farm land or rural property”?

DON'T JUST LIST IT - LETS GET IT SOLD!!!

204-724-2131

ScottC@royallepage.ca

DID YOU KNOW?

Farmers, factory and constructions workers, and truck drivers have a higher risk of noise induced hearing loss on the job.



GET YOUR HEARING TESTED!

- Anyone exposed to loud noise should have a baseline hearing test and monitor their hearing annually.
- Even if you have not been exposed to loud noise, a baseline hearing test is recommended for all adults.
- A hearing test is painless, takes less than an hour and will reveal whether there is any real cause for concern.

SERVICES WE OFFER:

- Industrial hearing tests;
- Custom hearing protection; and
- Counselling on hearing prevention and hearing conservation



Call a clinic to book your **FREE** hearing test or book online at **HearingLife.ca**

Brandon

714 18 Street | Thomas Mall
Call Donna at
1-844-288-6572

Winkler

385 Main Street
Call Barbara at
1-844-251-0001

Winnipeg - St. James

2727 Portage Avenue
Call Denise at
1-844-246-4724

Portage La Prairie

306 Saskatchewan Avenue East
Call Jaclyn at
1-833-740-3426

Winnipeg - The Dominion Centre

55A Goulet Street
Call Daisy at
1-844-339-5151

Winnipeg - St. Vital

1510 St. Mary's Road
Call Shannon at
1-833-432-7437



A comprehensive hearing assessment is provided to adults ages 19 and older at no cost. The results of this assessment will be communicated verbally to you. If you request a copy of the Audiological Report, a fee will apply. Child hearing tests are conducted at select locations for a fee, please contact us for more information.

Promo Code **MAG-USP-FRAS**



- Celebrating 53 Years of Service!
- Heavy Truck & Trailer Repair Facility
 - Body Repair
 - Refinishing
 - Sandblasting
- Member of the Manitoba Commercial Vehicle Repair Association
- 62 1/2' Down Draft Bake Cycle Spray Booth
- Secured Compound
- 35' Down Draft Bake Cycle Spray Booth
- Two 60' Heavy Frame Straighteners
- Spring & Suspension Repair
- 60' Computerized Lazer Alignment Machine
- MPI Accredited
- Armaguard Spray-on Box Liners
 - Truck Box
 - Wheel Wells
 - Rocker Panels



Morgan Motors Co. Ltd.

30 Klondike Road, Brandon Manitoba
 TF: 1.877.725.0756
 204.725.0755

E: morganmotors@mymts.net
morgancollision.ca



Our reputation is Your guarantee...

Fraser Auction Service is a second generation family business, founded in 1979. We strive to provide our buyers and sellers with an enjoyable auction experience, whether you are a regular auction attendee or a first-timer who could use a little help getting comfortable with the bidding process.

We pride ourselves in providing professional, well-attended auction events, either on your farm or at our high-traffic 50 acre yard just North of Brandon, MB on hwy #10 (25 Wheatbelt Road)

Why use Fraser Auction Service?

- We have conducted thousands of auction sales through-out Western Canada
- Full-service auction company including appraisals and evaluation
- Computerized mobile office - ready to conduct sales anywhere, anytime
- Our bidder database is substantial, email lists for agriculture plus many other sectors of business and industry.
- Our up to date website draws 1,000's of buyers annually
- We keep up the trends and utilize several digital marketing platforms Facebook, Twitter, YouTube, etc.

Thinking of having an auction sale? We can provide a no-obligation consultation. Call now in order to get the full benefit of our extensive advertising program.

Owners: Scott and Lori Campbell & Sons

Member of CAA, MAA, SAA, MBA, SBA, ABA, CHC

Phone: 204-727-2001 or 1-800-483-5856

Fax: 204-729-9912

Email: office@fraserauction.com

Like us  Fraser Auction Service Ltd.

Follow us  @fraserauction

www.fraserauction.com

NOW BOOKING 2021 AUCTION SALES!

Contact us to be in our next Spring Auction Guide.

- Sales booked as of February 16th. To see sales booked after print date visit www.fraserauction.com